

165°15'0"W 165°9'0"W 165°3'0"W 164°57'0"W 164°51'0"W 164°45'0"W 164°39'0"W 164°33'0"W 164°27'0"W 164°21'0"W 164°15'0"W 164°9'0"W 164°3'0"W 163°57'0"W 163°51'0"W 163°45'0"W

NOT FOR NAVIGATION



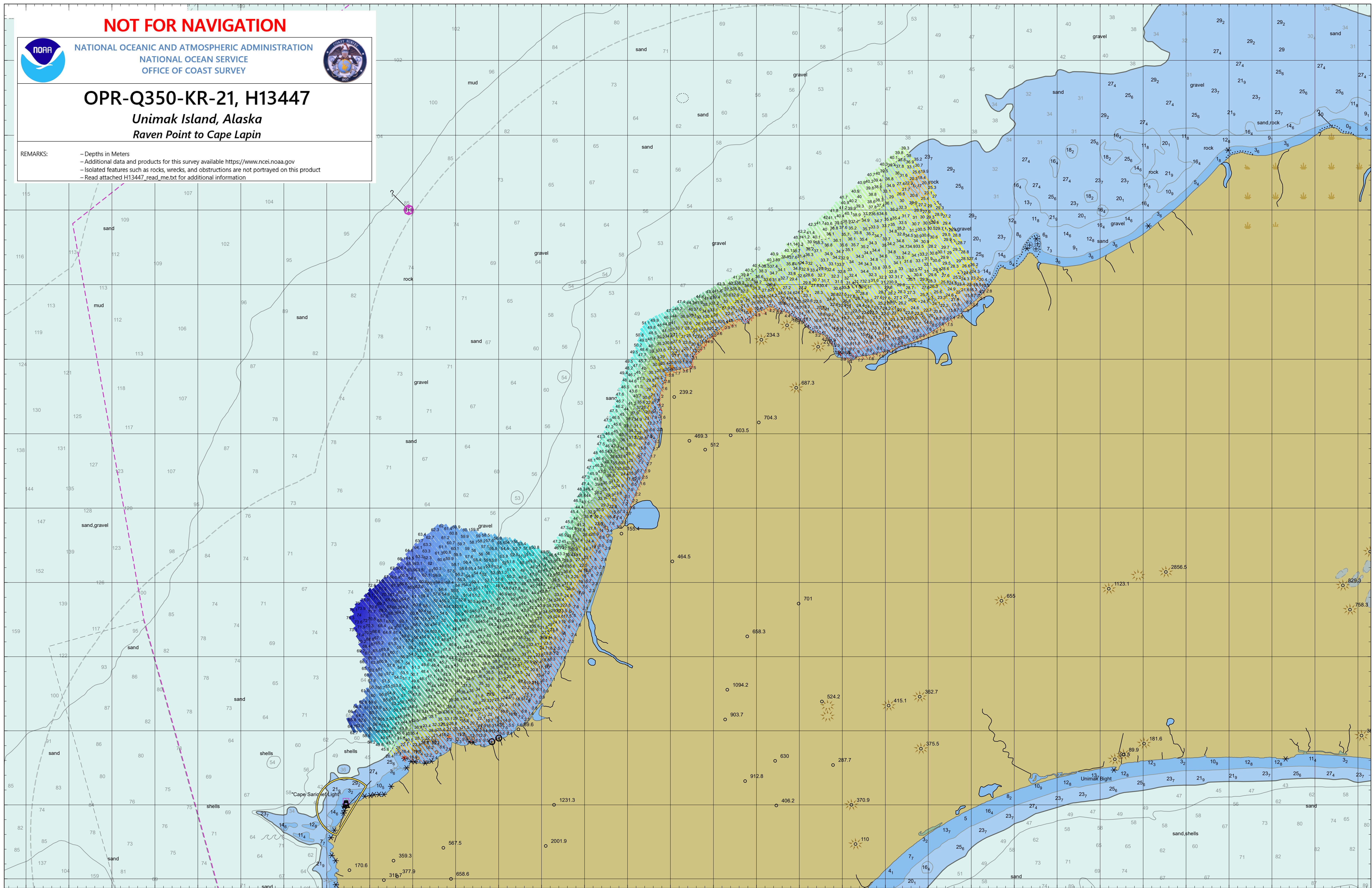
NATIONAL OCEANIC AND ATMOSPHERIC ADMINISTRATION
NATIONAL OCEAN SERVICE
OFFICE OF COAST SURVEY



OPR-Q350-KR-21, H13447

Unimak Island, Alaska
Raven Point to Cape Lapin

REMARKS:
- Depths in Meters
- Additional data and products for this survey available <https://www.ncei.noaa.gov>
- Isolated features such as rocks, wrecks, and obstructions are not portrayed on this product
- Read attached H13447_read_m.txt for additional information



165°15'0"W 165°9'0"W 165°3'0"W 164°57'0"W 164°51'0"W 164°45'0"W 164°39'0"W 164°33'0"W 164°27'0"W 164°21'0"W 164°15'0"W 164°9'0"W 164°3'0"W 163°57'0"W 163°51'0"W 163°45'0"W