

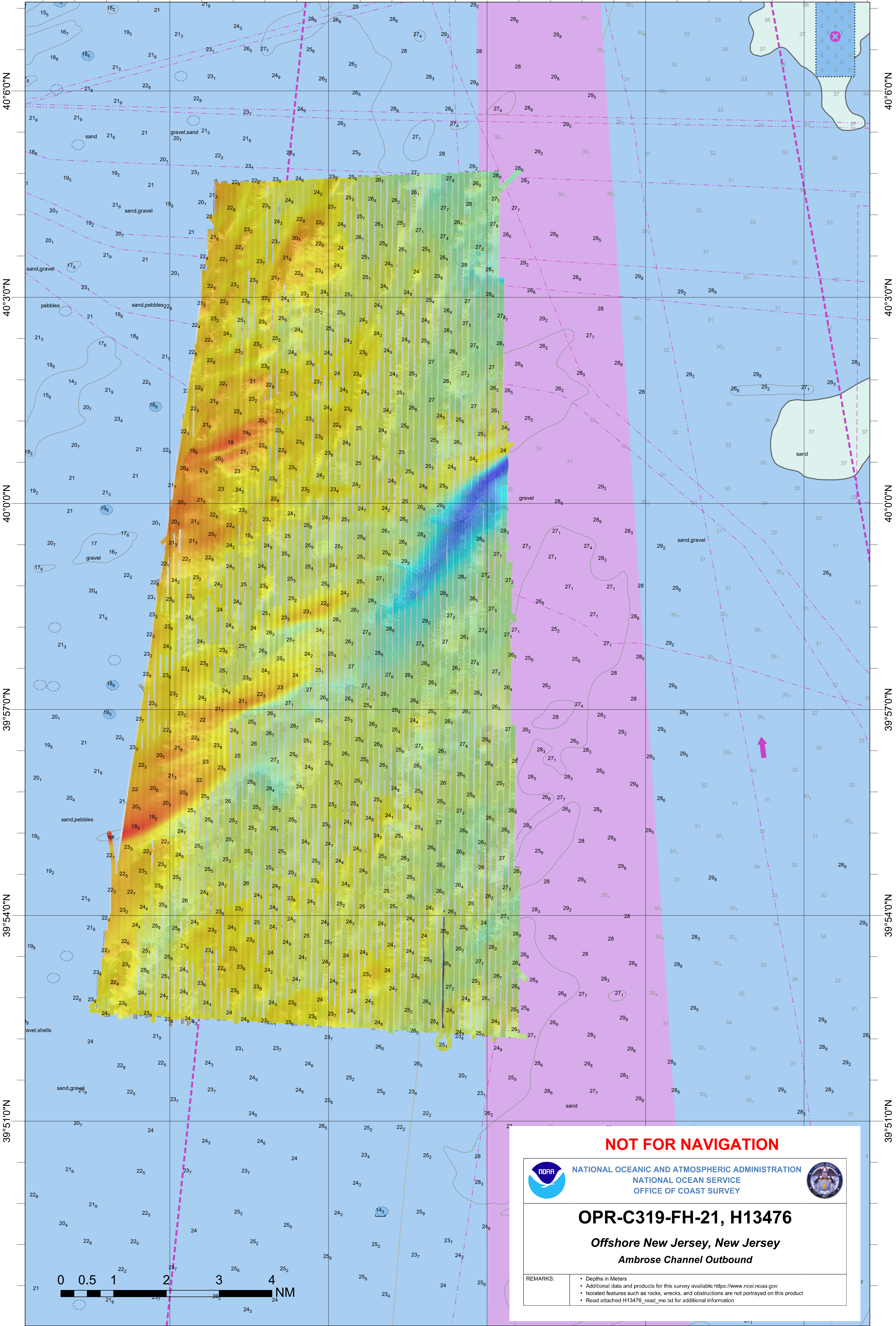
73°54'0"W

73°51'0"W

73°48'0"W

73°45'0"W

73°42'0"W



**NOT FOR NAVIGATION**



NATIONAL OCEANIC AND ATMOSPHERIC ADMINISTRATION  
NATIONAL OCEAN SERVICE  
OFFICE OF COAST SURVEY



**OPR-C319-FH-21, H13476**

*Offshore New Jersey, New Jersey*  
*Ambrose Channel Outbound*

REMARKS:

- Depths in Meters
- Additional data and products for this survey available <https://www.ncei.noaa.gov>
- Isolated features such as rocks, wrecks, and obstructions are not portrayed on this product
- Read attached H13476\_read\_me.txt for additional information