

73°48'0"W

73°45'0"W

73°42'0"W

73°39'0"W

73°36'0"W

**NOT FOR NAVIGATION**



NATIONAL OCEANIC AND ATMOSPHERIC ADMINISTRATION  
NATIONAL OCEAN SERVICE  
OFFICE OF COAST SURVEY



**OPR-C319-FH-21, H13477**

*Offshore New Jersey, New Jersey*

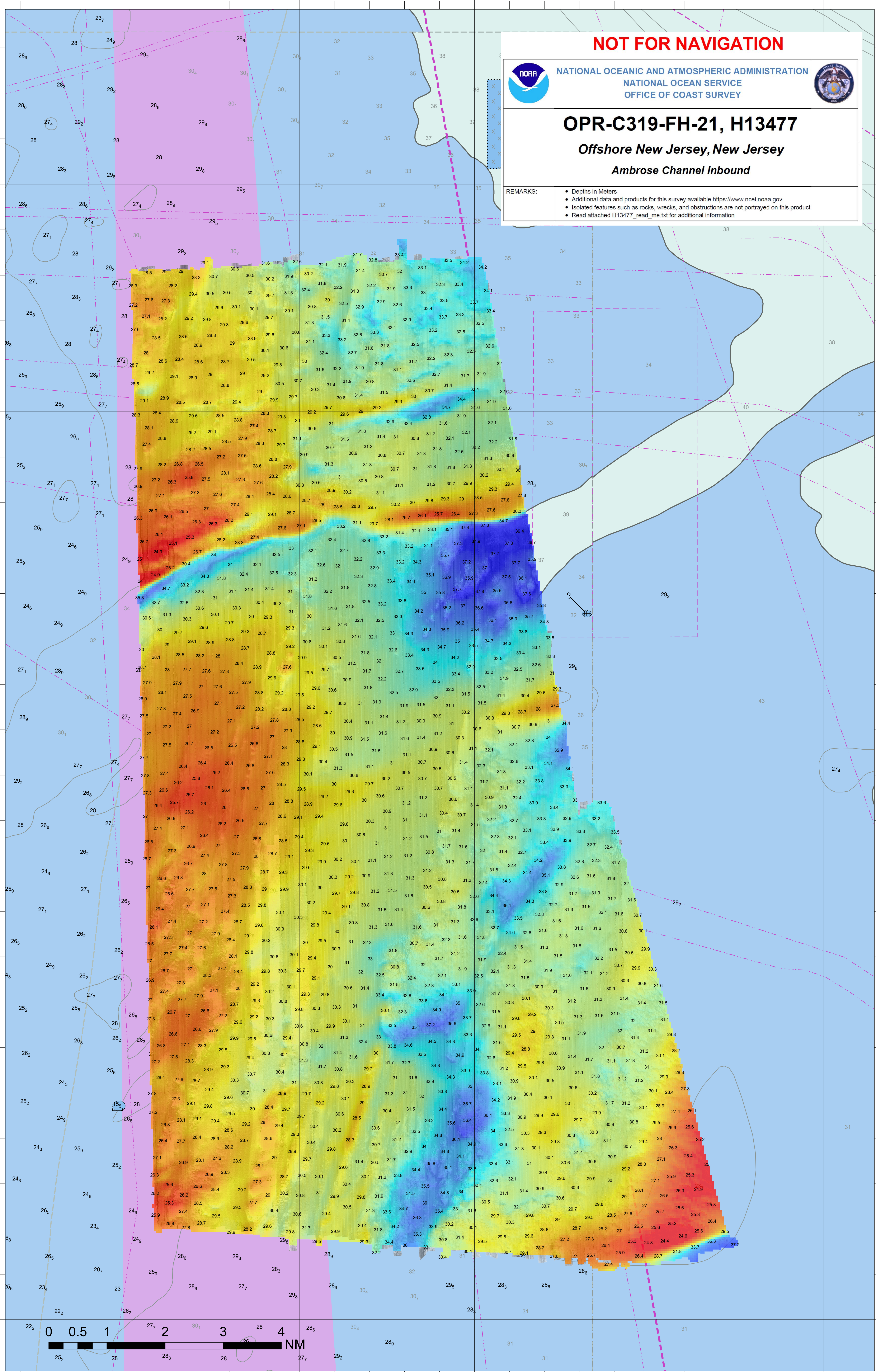
*Ambrose Channel Inbound*

REMARKS:

- Depths in Meters
- Additional data and products for this survey available <https://www.ncei.noaa.gov>
- Isolated features such as rocks, wrecks, and obstructions are not portrayed on this product
- Read attached H13477\_read\_me.txt for additional information

40°6'0"N  
40°3'0"N  
40°0'0"N  
39°57'0"N  
39°54'0"N  
39°51'0"N

40°6'0"N  
40°3'0"N  
40°0'0"N  
39°57'0"N  
39°54'0"N  
39°51'0"N



73°48'0"W

73°45'0"W

73°42'0"W

73°39'0"W

73°36'0"W