


122°27'0"W


122°24'0"W

122°21'0"W

NOT FOR NAVIGATION



NATIONAL OCEANIC AND ATMOSPHERIC ADMINISTRATION
NATIONAL OCEAN SERVICE
OFFICE OF COAST SURVEY



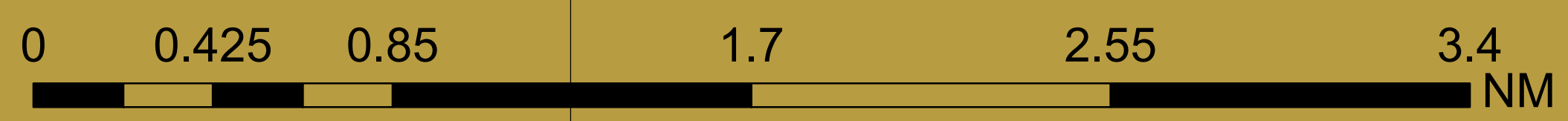
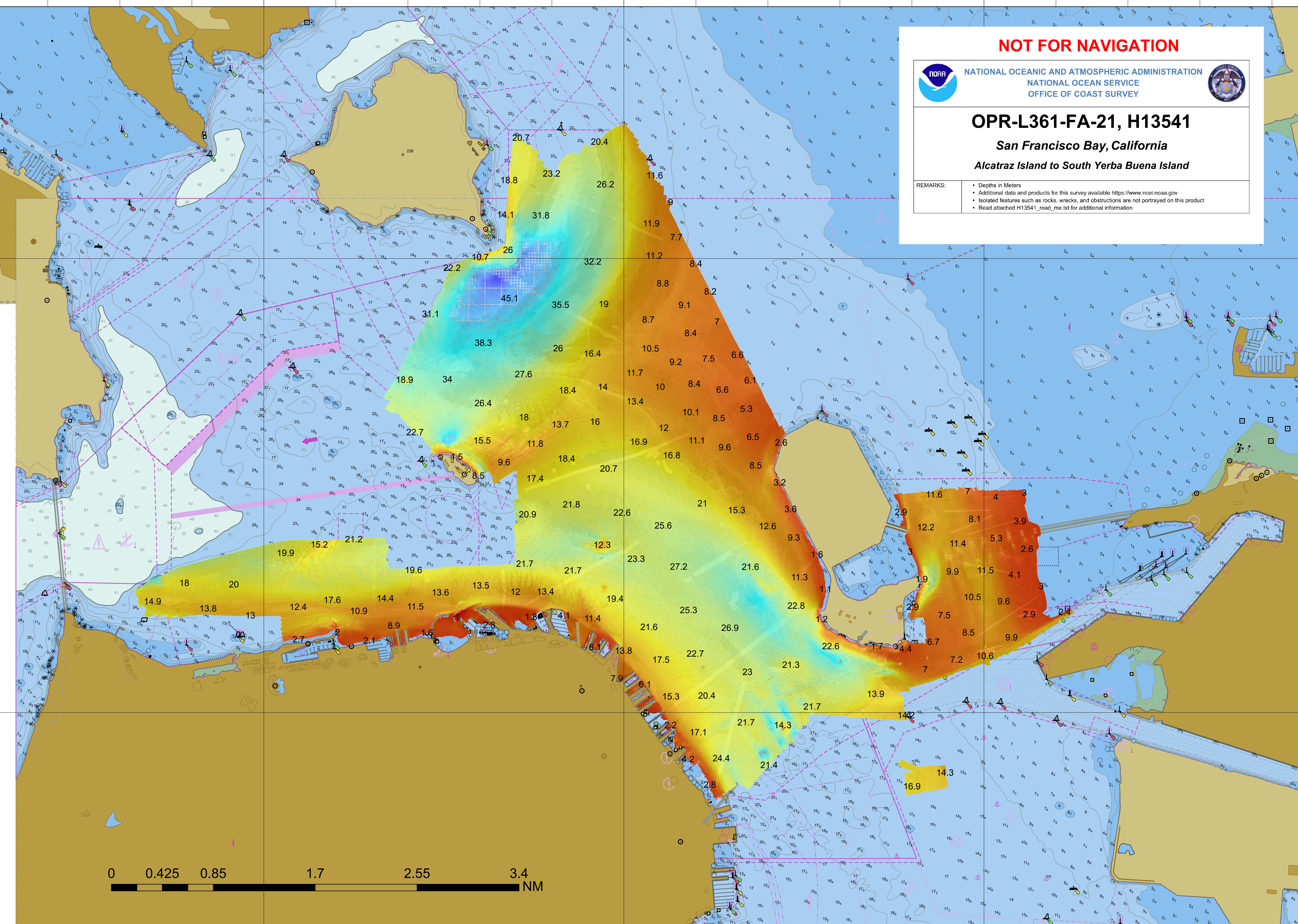
OPR-L361-FA-21, H13541

San Francisco Bay, California
Alcatraz Island to South Yerba Buena Island

REMARKS:	<ul style="list-style-type: none"> • Depths in Meters • Additional data and products for this survey available https://www.ncei.noaa.gov • Isolated features such as rocks, wrecks, and obstructions are not portrayed on this product • Read attached H13541_read_me.txt for additional information
-----------------	--

37°51'0"N

37°48'0"N



122°27'0"W

122°24'0"W

122°21'0"W