

76°18'0"W

76°15'0"W

76°12'0"W

76°9'0"W

34°30'0"N

34°30'0"N

34°27'0"N

34°27'0"N

34°24'0"N

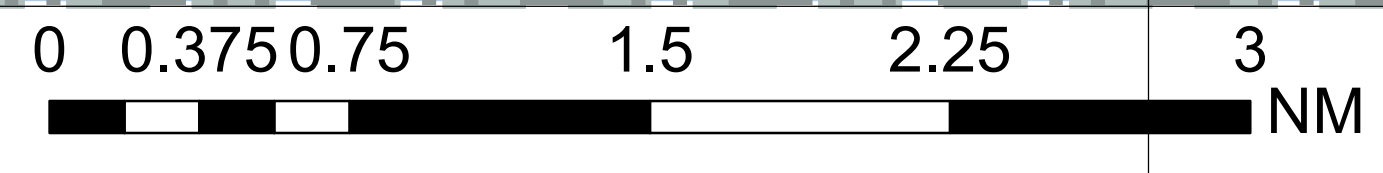
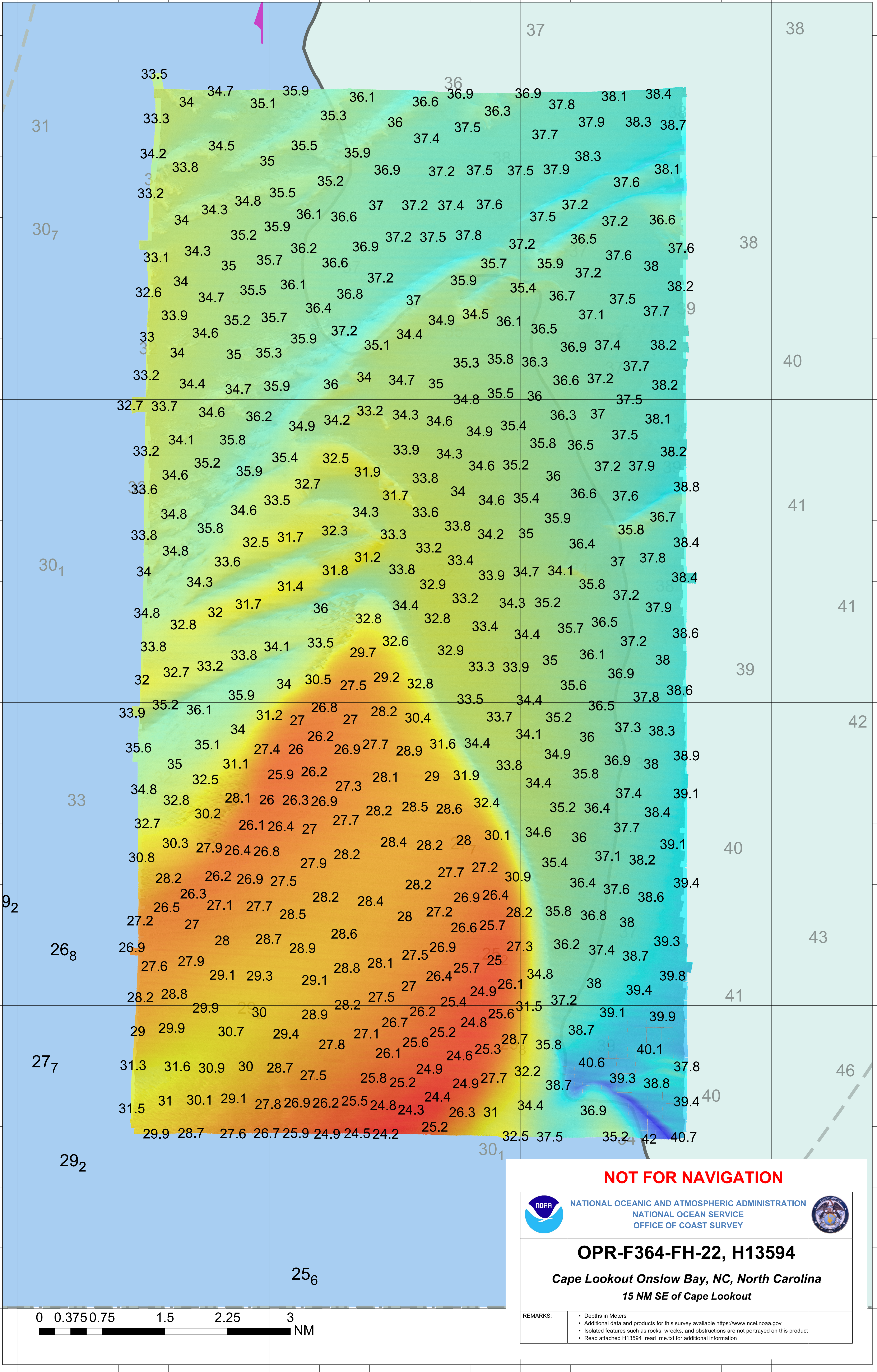
34°24'0"N

34°21'0"N

34°21'0"N

34°18'0"N

34°18'0"N



NOT FOR NAVIGATION



NATIONAL OCEANIC AND ATMOSPHERIC ADMINISTRATION
 NATIONAL OCEAN SERVICE
 OFFICE OF COAST SURVEY



OPR-F364-FH-22, H13594

Cape Lookout Onslow Bay, NC, North Carolina
 15 NM SE of Cape Lookout

REMARKS:

- Depths in Meters
- Additional data and products for this survey available <https://www.ncei.noaa.gov>
- Isolated features such as rocks, wrecks, and obstructions are not portrayed on this product
- Read attached H13594_read_me.txt for additional information

76°18'0"W

76°15'0"W

76°12'0"W

76°9'0"W