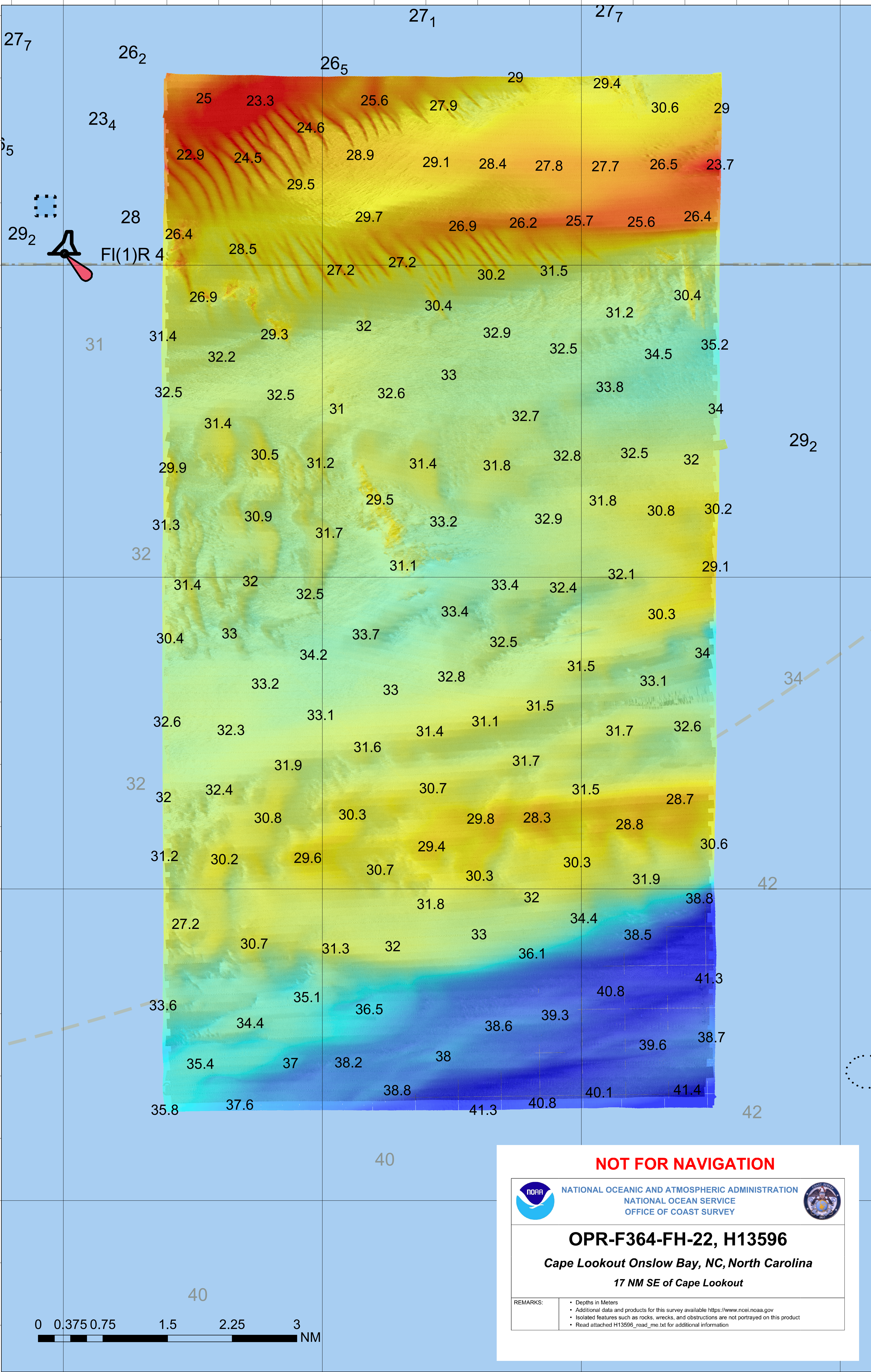


76°24'0"W

76°21'0"W

76°18'0"W

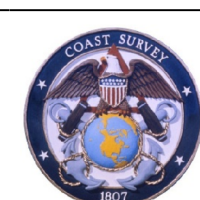
76°15'0"W



**NOT FOR NAVIGATION**



NATIONAL OCEANIC AND ATMOSPHERIC ADMINISTRATION  
NATIONAL OCEAN SERVICE  
OFFICE OF COAST SURVEY



**OPR-F364-FH-22, H13596**

*Cape Lookout Onslow Bay, NC, North Carolina*

*17 NM SE of Cape Lookout*

REMARKS:

- Depths in Meters
- Additional data and products for this survey available <https://www.ncei.noaa.gov>
- Isolated features such as rocks, wrecks, and obstructions are not portrayed on this product
- Read attached H13596\_read\_me.txt for additional information

0 0.375 0.75 1.5 2.25 3 NM

76°24'0"W

76°21'0"W

76°18'0"W

76°15'0"W

34°18'0"N

34°15'0"N

34°12'0"N

34°9'0"N

34°18'0"N

34°15'0"N

34°12'0"N

34°9'0"N