

87°33'0"W

87°30'0"W

87°27'0"W

87°24'0"W

87°21'0"W

44°18'0"N

44°15'0"N

44°12'0"N

44°9'0"N

44°6'0"N

44°18'0"N

44°15'0"N

44°12'0"N

44°9'0"N

44°6'0"N

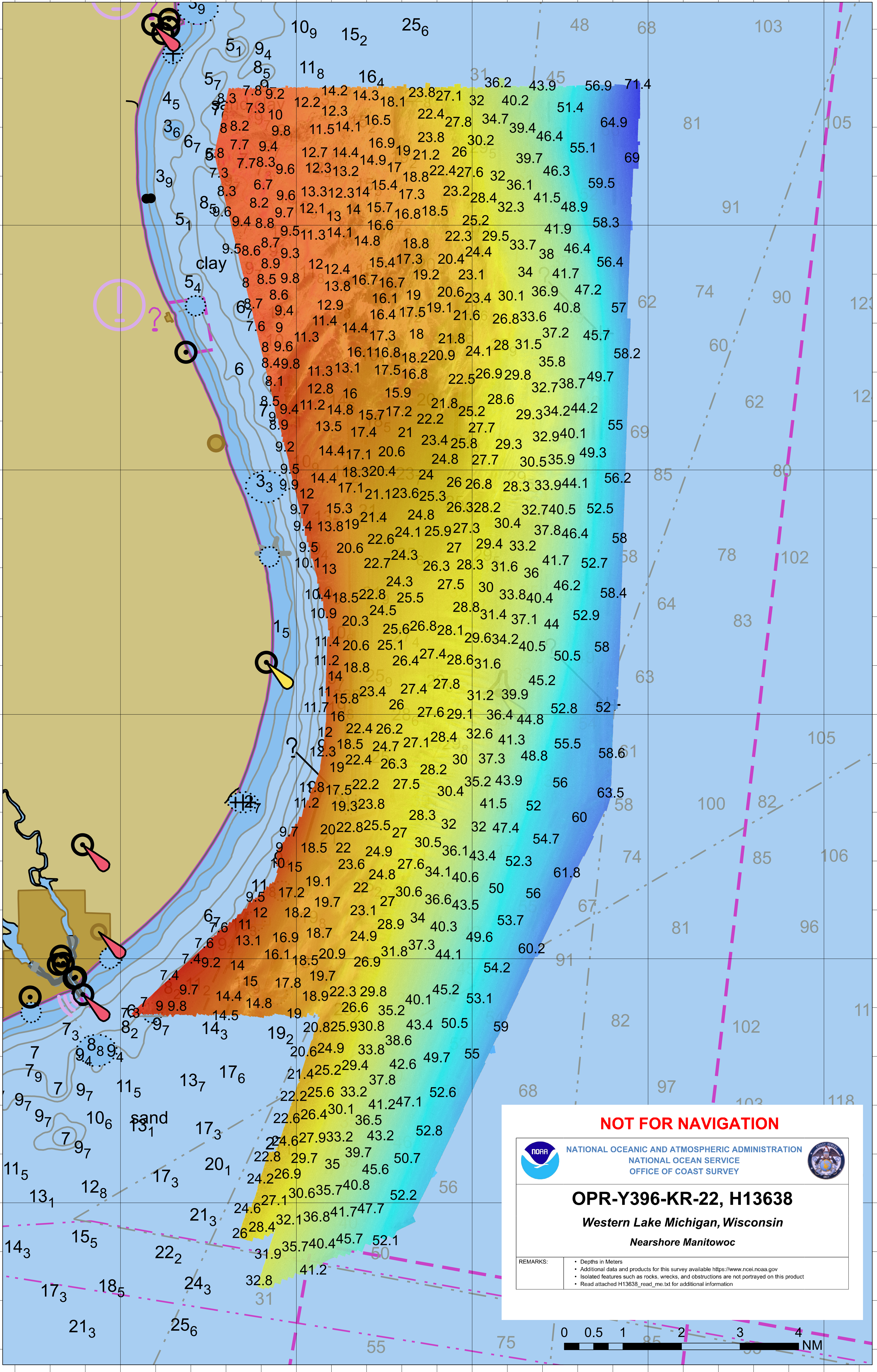
87°33'0"W

87°30'0"W

87°27'0"W

87°24'0"W

87°21'0"W



NOT FOR NAVIGATION



NATIONAL OCEANIC AND ATMOSPHERIC ADMINISTRATION
NATIONAL OCEAN SERVICE
OFFICE OF COAST SURVEY



OPR-Y396-KR-22, H13638

Western Lake Michigan, Wisconsin

Nearshore Manitowoc

REMARKS:

- Depths in Meters
- Additional data and products for this survey available <https://www.ncei.noaa.gov>
- Isolated features such as rocks, wrecks, and obstructions are not portrayed on this product
- Read attached H13638_read_me.txt for additional information

