

87°54'0"W

87°48'0"W

87°42'0"W

87°36'0"W

87°30'0"W

NOT FOR NAVIGATION



NATIONAL OCEANIC AND ATMOSPHERIC ADMINISTRATION
NATIONAL OCEAN SERVICE
OFFICE OF COAST SURVEY



OPR-Y396-KR-22, H13641

Western Lake Michigan, Wisconsin

9 NM East of Port Washington

REMARKS:

- Depths in Meters
- Additional data and products for this survey available <https://www.ncei.noaa.gov>
- Isolated features such as rocks, wrecks, and obstructions are not portrayed on this product
- Read attached H13641_read_me.txt for additional information

43°36'0"N

43°30'0"N

43°24'0"N

43°18'0"N

43°12'0"N

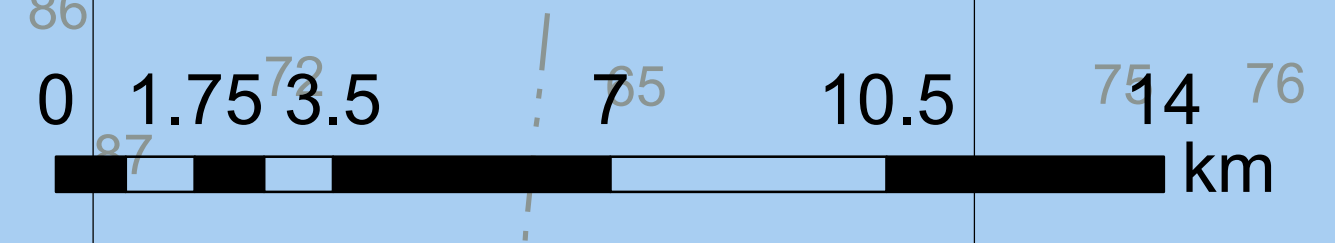
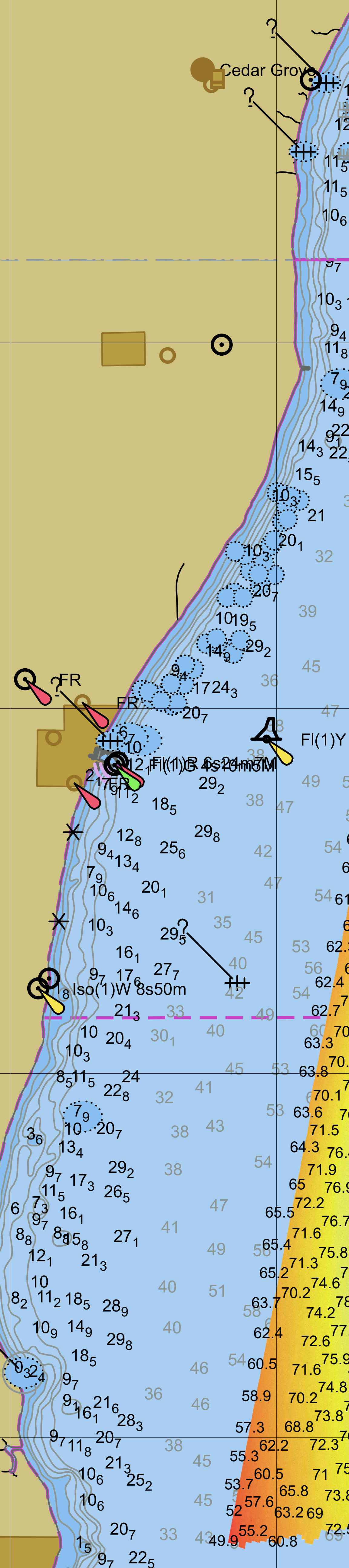
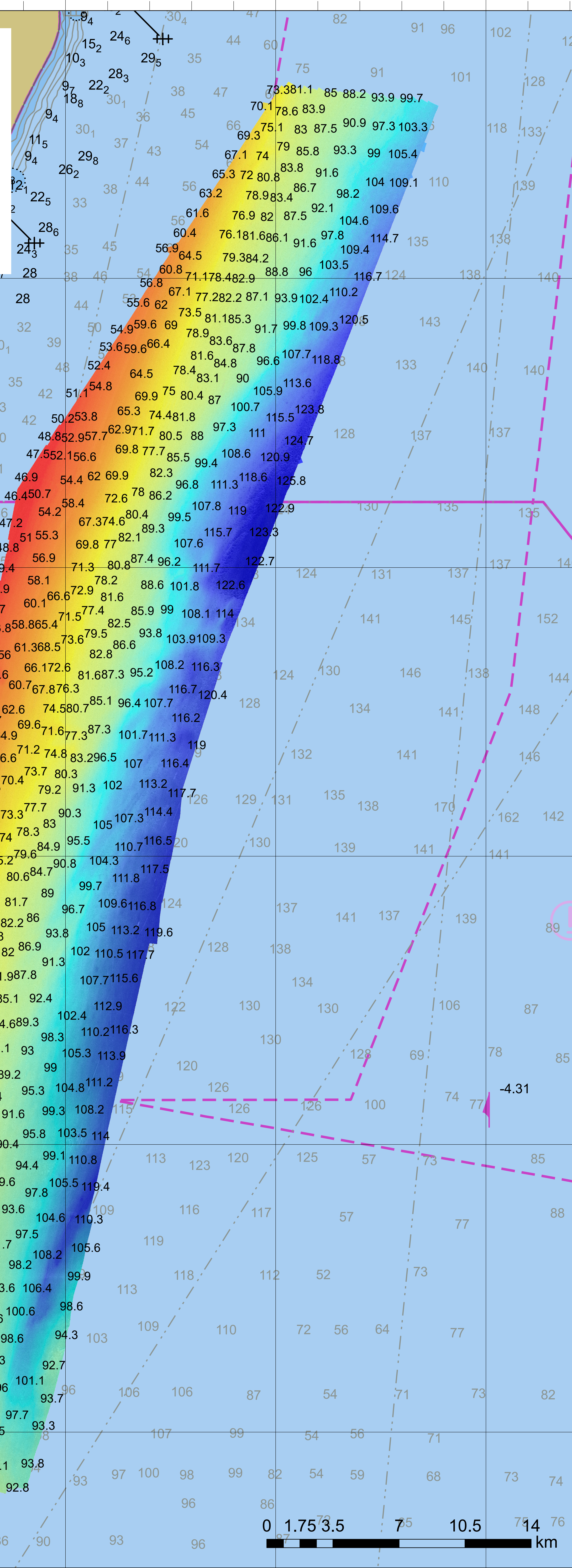
43°36'0"N

43°30'0"N

43°24'0"N

43°18'0"N

43°12'0"N



87°54'0"W

87°48'0"W

87°42'0"W

87°36'0"W

87°30'0"W