

163°9'0"W 163°6'0"W 163°3'0"W 163°0'0"W 162°57'0"W 162°54'0"W 162°51'0"W 162°48'0"W 162°45'0"W

**NOT FOR NAVIGATION**



NATIONAL OCEANIC AND ATMOSPHERIC ADMINISTRATION  
NATIONAL OCEAN SERVICE  
OFFICE OF COAST SURVEY



**OPR-R390-KR-23, H13700**

*Norton Sound, AK, Alaska*

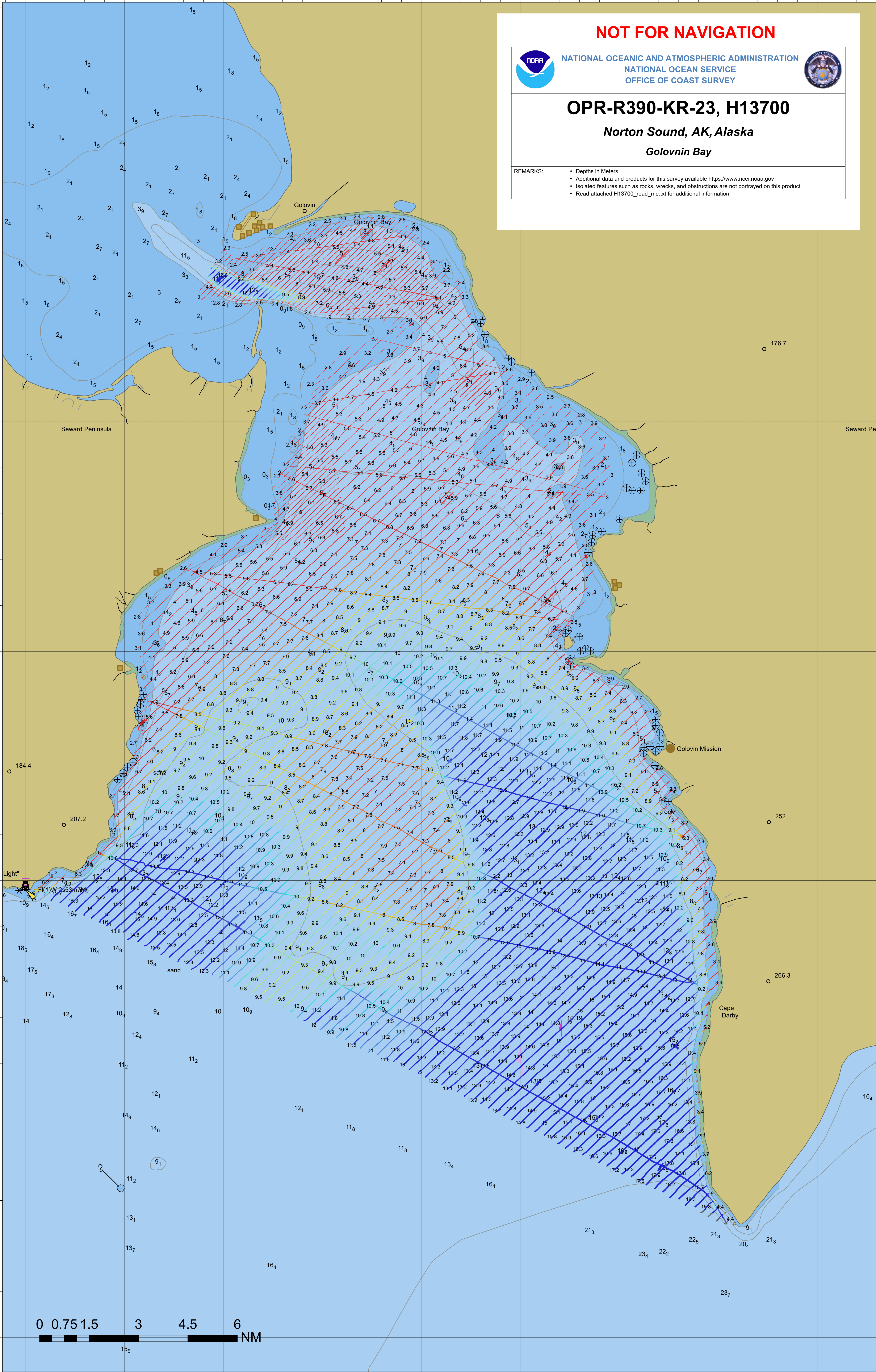
*Golovin Bay*

REMARKS:

- Depths in Meters
- Additional data and products for this survey available <https://www.ncei.noaa.gov>
- Isolated features such as rocks, wrecks, and obstructions are not portrayed on this product
- Read attached H13700\_read\_me.txt for additional information

64°33'0"N  
64°30'0"N  
64°27'0"N  
64°24'0"N  
64°21'0"N  
64°18'0"N

64°33'0"N  
64°30'0"N  
64°27'0"N  
64°24'0"N  
64°21'0"N  
64°18'0"N



0 0.75 1.5 3 4.5 6 NM

163°9'0"W 163°6'0"W 163°3'0"W 163°0'0"W 162°57'0"W 162°54'0"W 162°51'0"W 162°48'0"W 162°45'0"W