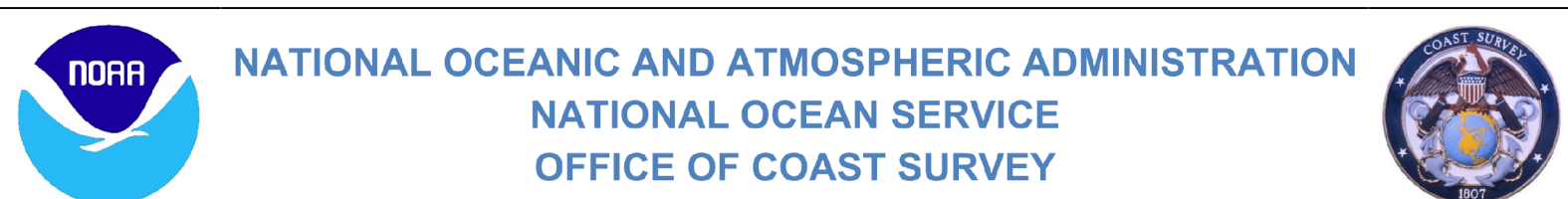


NOT FOR NAVIGATION



OPR-T382-RA-23, H13732

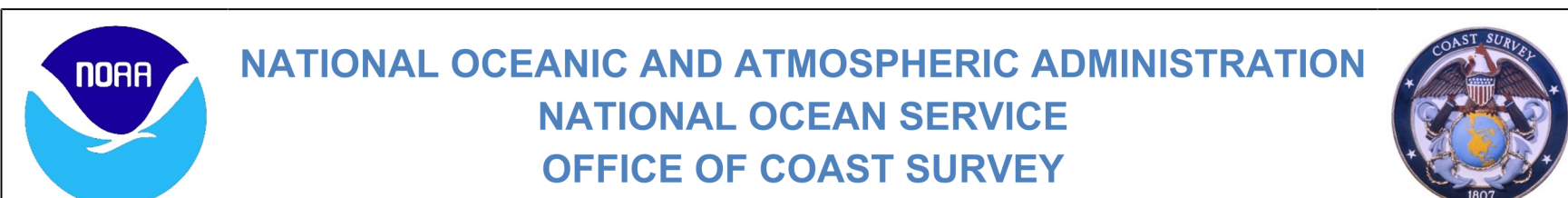
American Samoa and PRIA, American Samoa

Baker Island

REMARKS:
• Depths in Meters
• Additional data and products for this survey available <https://www.ncei.noaa.gov>
• Isolated features such as rocks, wrecks, and obstructions are not portrayed on this product
• Read attached H13732_read_me.txt for additional information



NOT FOR NAVIGATION

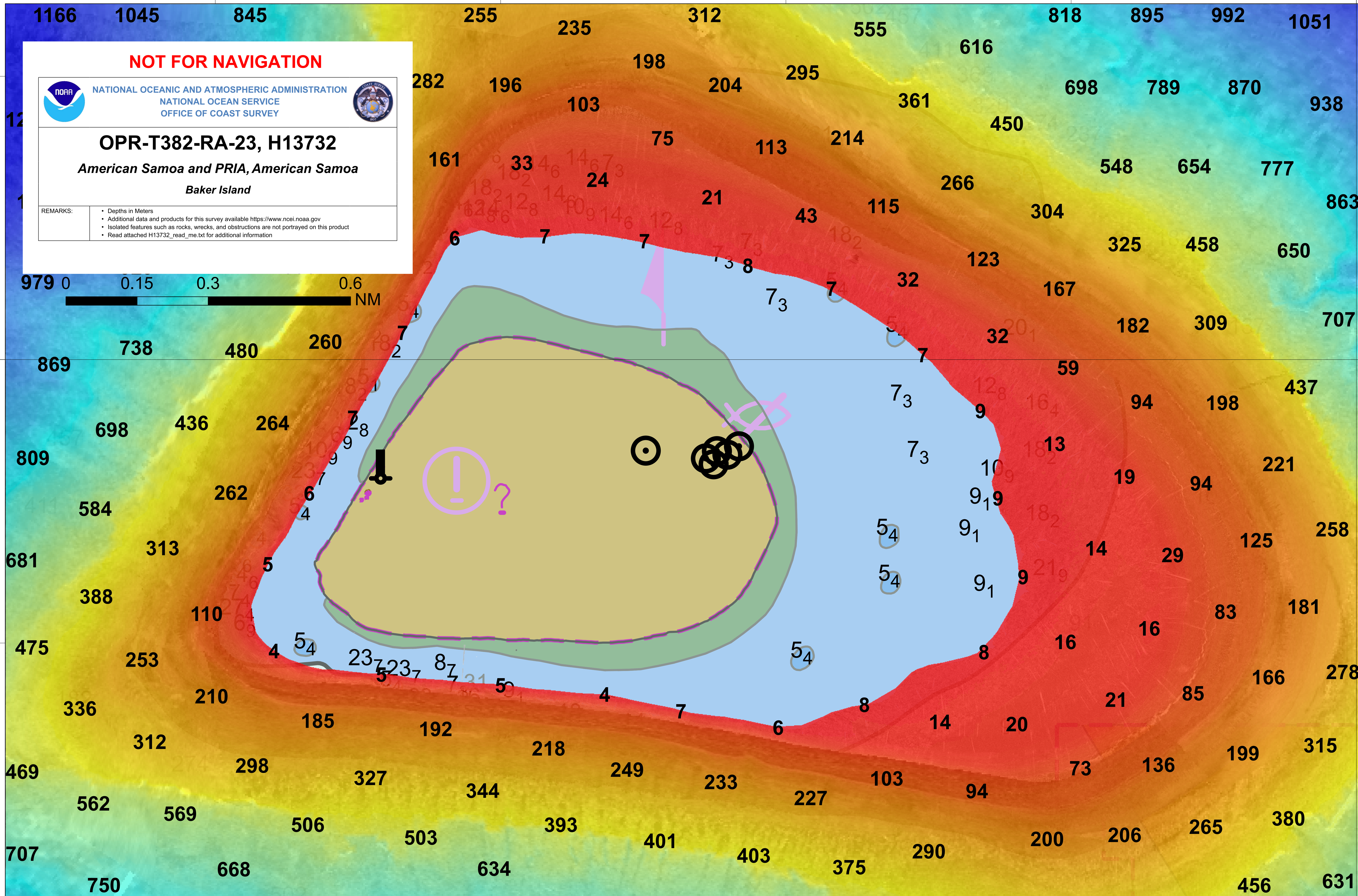
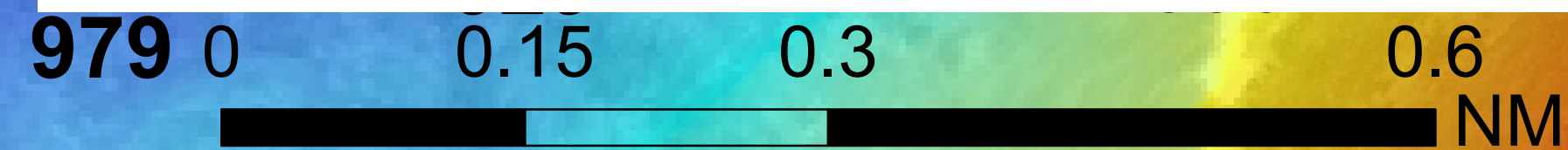


OPR-T382-RA-23, H13732

American Samoa and PRIA, American Samoa

Baker Island

- REMARKS:
- Depths in Meters
 - Additional data and products for this survey available <https://www.ncei.noaa.gov>
 - Isolated features such as rocks, wrecks, and obstructions are not portrayed on this product
 - Read attached H13732_read_me.txt for additional information



176°27'0"W

0°12'0"N

176°27'0"W