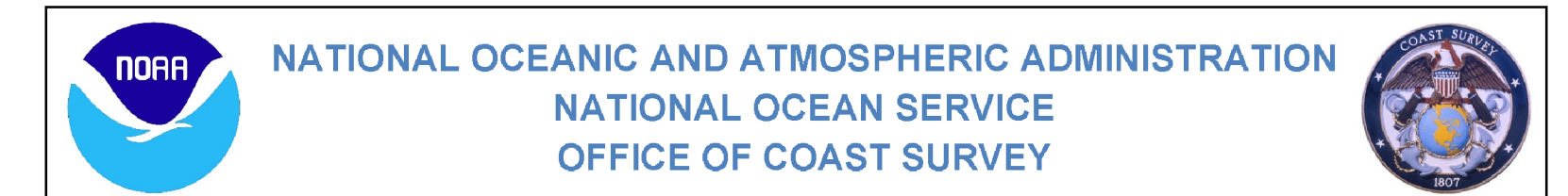


NOT FOR NAVIGATION

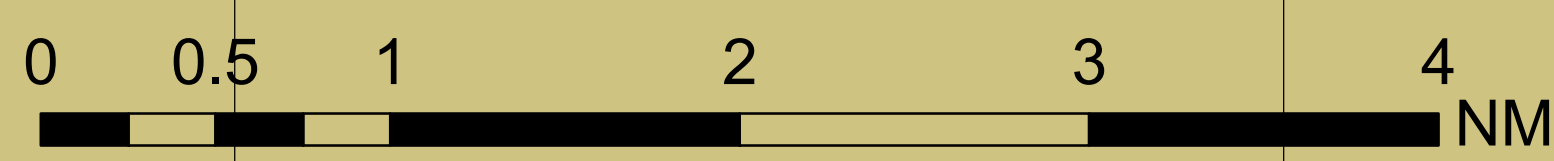


OPR-F330-KR-22, H13762

Albemarle Sound, North Carolina

Alligator River

REMARKS:
• Depths in Meters
• Additional data and products for this survey available <https://www.ncsl.noaa.gov>
• Isolated features such as rocks, wrecks, and obstructions are not portrayed on this product
• Read attached H13762_read_me.txt for additional information



76°12'0"W 76°9'0"W 76°6'0"W 76°3'0"W 76°0'0"W 75°57'0"W

36°30'0"N
36°0'0"N
35°57'0"N
35°54'0"N

36°30'0"N
36°0'0"N
35°57'0"N
35°54'0"N

76°3'0"W

76°0'0"W

35°54'0"N

35°54'0"N

35°51'0"N

35°51'0"N

35°48'0"N

35°48'0"N

35°45'0"N

35°45'0"N

NOT FOR NAVIGATION



NATIONAL OCEANIC AND ATMOSPHERIC ADMINISTRATION
NATIONAL OCEAN SERVICE
OFFICE OF COAST SURVEY



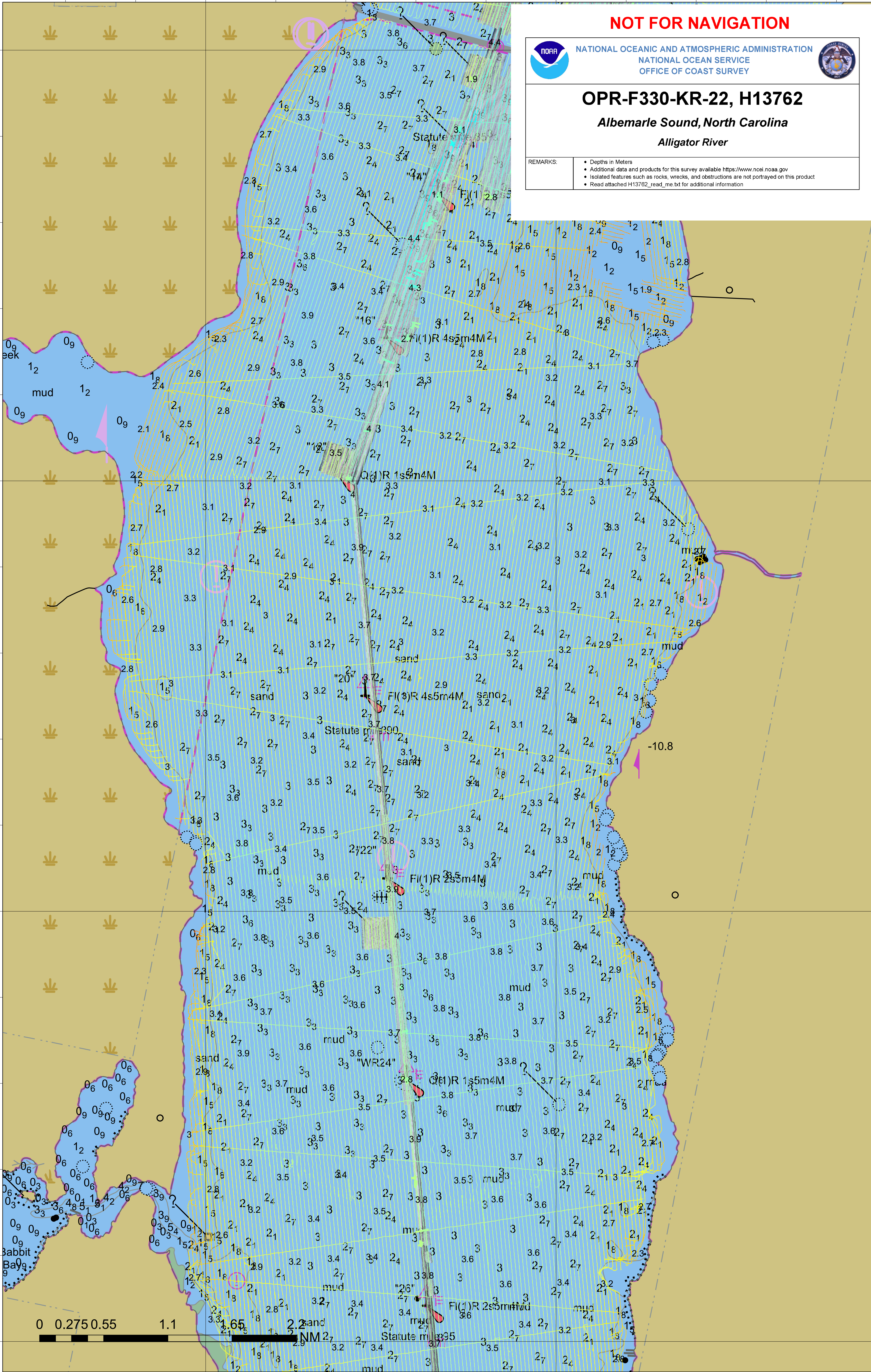
OPR-F330-KR-22, H13762

Albemarle Sound, North Carolina

Alligator River

REMARKS:

- Depths in Meters
- Additional data and products for this survey available <https://www.ncei.noaa.gov>
- Isolated features such as rocks, wrecks, and obstructions are not portrayed on this product
- Read attached H13762_read_me.txt for additional information



0 0.275 0.55 1.1 2.2 NM

76°3'0"W

76°0'0"W

NOT FOR NAVIGATION



NATIONAL OCEANIC AND ATMOSPHERIC ADMINISTRATION
NATIONAL OCEAN SERVICE
OFFICE OF COAST SURVEY

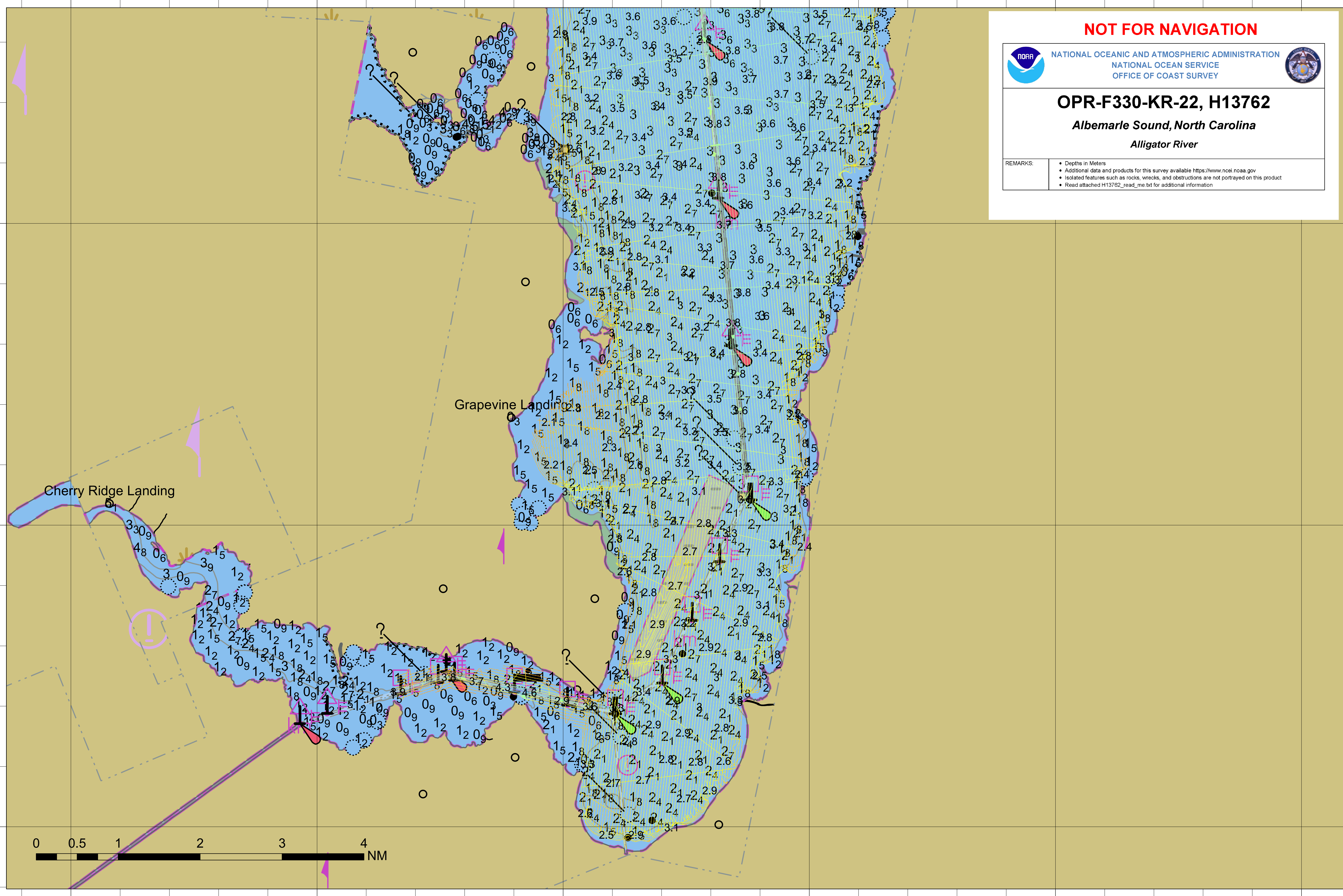


OPR-F330-KR-22, H13762

Albemarle Sound, North Carolina

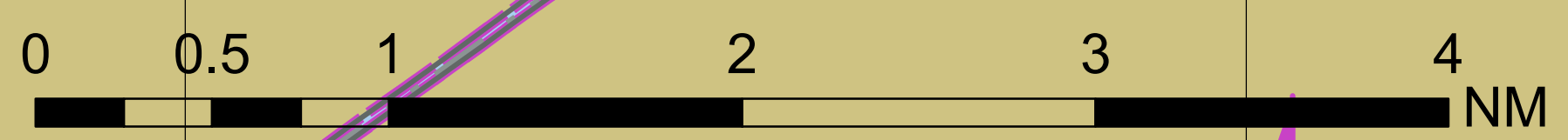
Alligator River

REMARKS:
• Depths in Meters
• Additional data and products for this survey available <https://www.ncsl.noaa.gov>
• Isolated features such as rocks, wrecks, and obstructions are not portrayed on this product
• Read attached H13762_read_me.txt for additional information



Cherry Ridge Landing

Grapevine Landing



35°45'0"N

35°45'0"N

35°42'0"N

35°42'0"N

35°39'0"N

35°39'0"N