

80°15'0"W

80°10'0"W

80°5'0"W

NOT FOR NAVIGATION



NATIONAL OCEANIC AND ATMOSPHERIC ADMINISTRATION
NATIONAL OCEAN SERVICE
OFFICE OF COAST SURVEY



S-H902-NRTFB-23, H13790

Florida Keys, Florida

Turtle Reef to Brewster Reef

REMARKS:

- Depths in Meters
- Additional data and products for this survey available <https://www.noaa.gov>
- Isolated features such as rocks, wrecks, and obstructions are not portrayed on this product
- Read attached H13790_read_me.txt for additional information

25°35'0"N

25°35'0"N

25°30'0"N

25°30'0"N

25°25'0"N

25°25'0"N

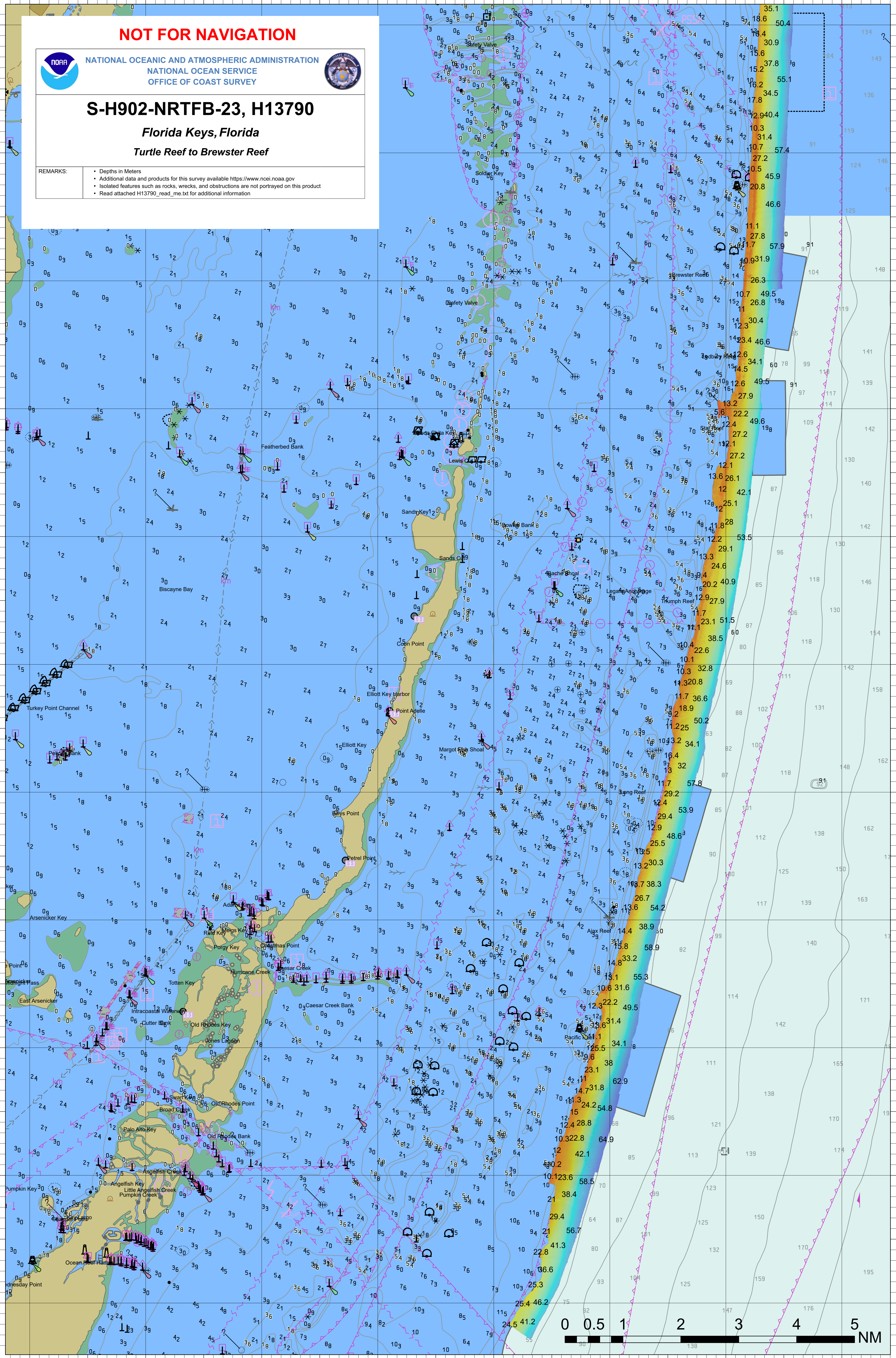
25°20'0"N

25°20'0"N

80°15'0"W

80°10'0"W

80°5'0"W



80°10'0"W

80°5'0"W

80°0'0"W

NOT FOR NAVIGATION



NATIONAL OCEANIC AND ATMOSPHERIC ADMINISTRATION
NATIONAL OCEAN SERVICE
OFFICE OF COAST SURVEY



S-H902-NRTFB-23, H13790

Florida Keys, Florida

Turtle Reef to Brewster Reef

REMARKS:

- Depths in Meters
- Additional data and products for this survey available <https://www.ncei.noaa.gov>
- Isolated features such as rocks, wrecks, and obstructions are not portrayed on this product
- Read attached H13790_read_me.txt for additional information

25°55'0"N

25°55'0"N

25°50'0"N

25°50'0"N

25°45'0"N

25°45'0"N

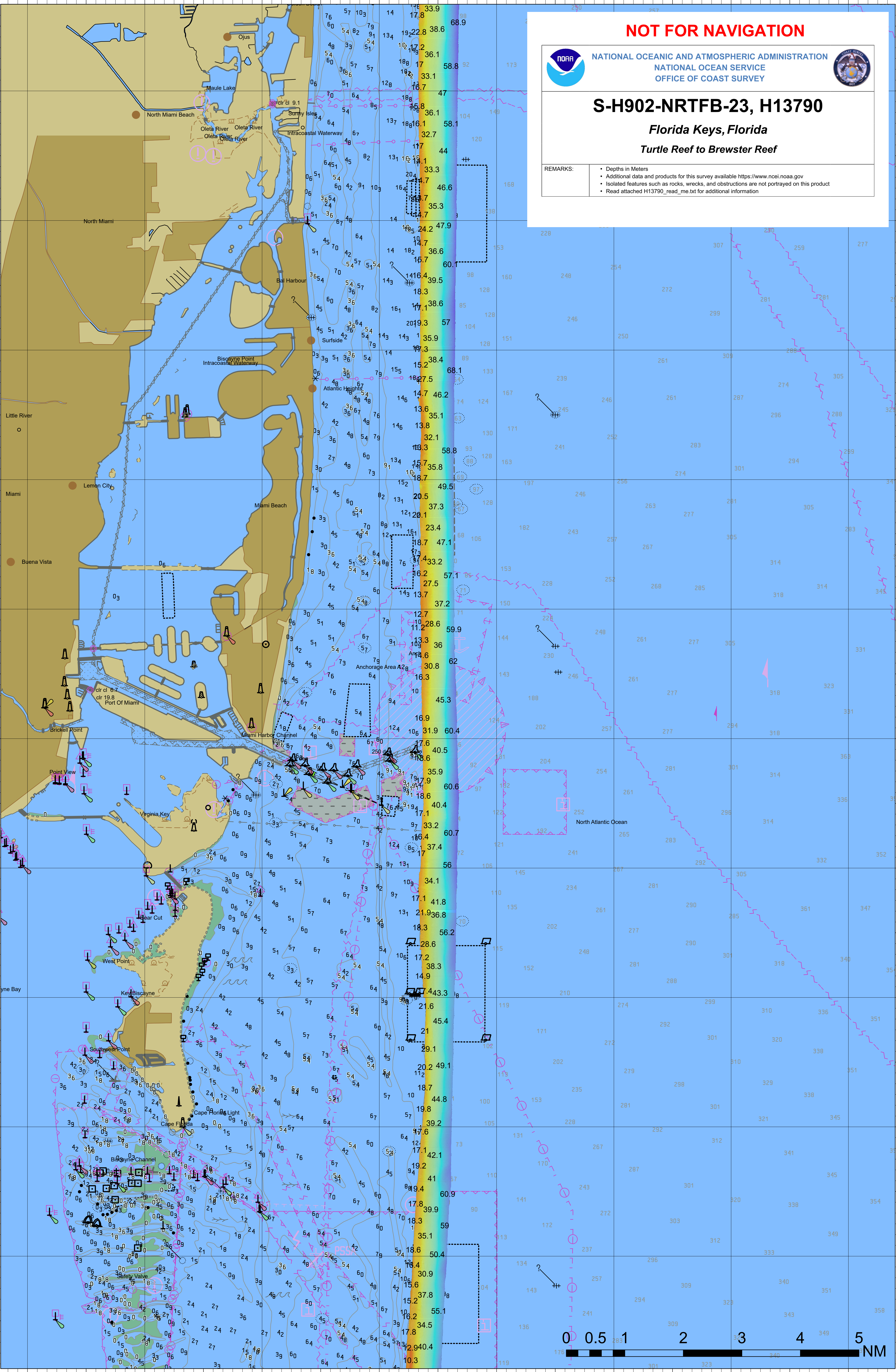
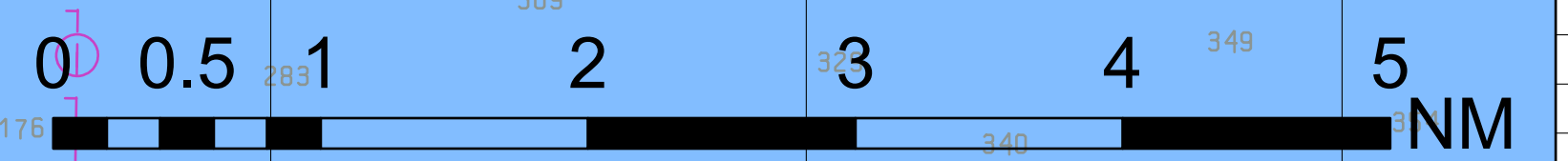
25°40'0"N

25°40'0"N

80°10'0"W

80°5'0"W

80°0'0"W



80°10'0"W

80°5'0"W

80°0'0"W

NOT FOR NAVIGATION



NATIONAL OCEANIC AND ATMOSPHERIC ADMINISTRATION
NATIONAL OCEAN SERVICE
OFFICE OF COAST SURVEY



S-H902-NRTFB-23, H13790

Florida Keys, Florida

Turtle Reef to Brewster Reef

REMARKS:

- Depths in Meters
- Additional data and products for this survey available <https://www.ncei.noaa.gov>
- Isolated features such as rocks, wrecks, and obstructions are not portrayed on this product
- Read attached H13790_read_me.txt for additional information

26°10'0"N

26°10'0"N

26°5'0"N

26°5'0"N

26°0'0"N

26°0'0"N

25°55'0"N

25°55'0"N

80°10'0"W

80°5'0"W

80°0'0"W

0 0.5 1 2 3 4 5 NM

