

76°36'0"W

76°33'0"W

**NOT FOR NAVIGATION**



NATIONAL OCEANIC AND ATMOSPHERIC ADMINISTRATION  
NATIONAL OCEAN SERVICE  
OFFICE OF COAST SURVEY



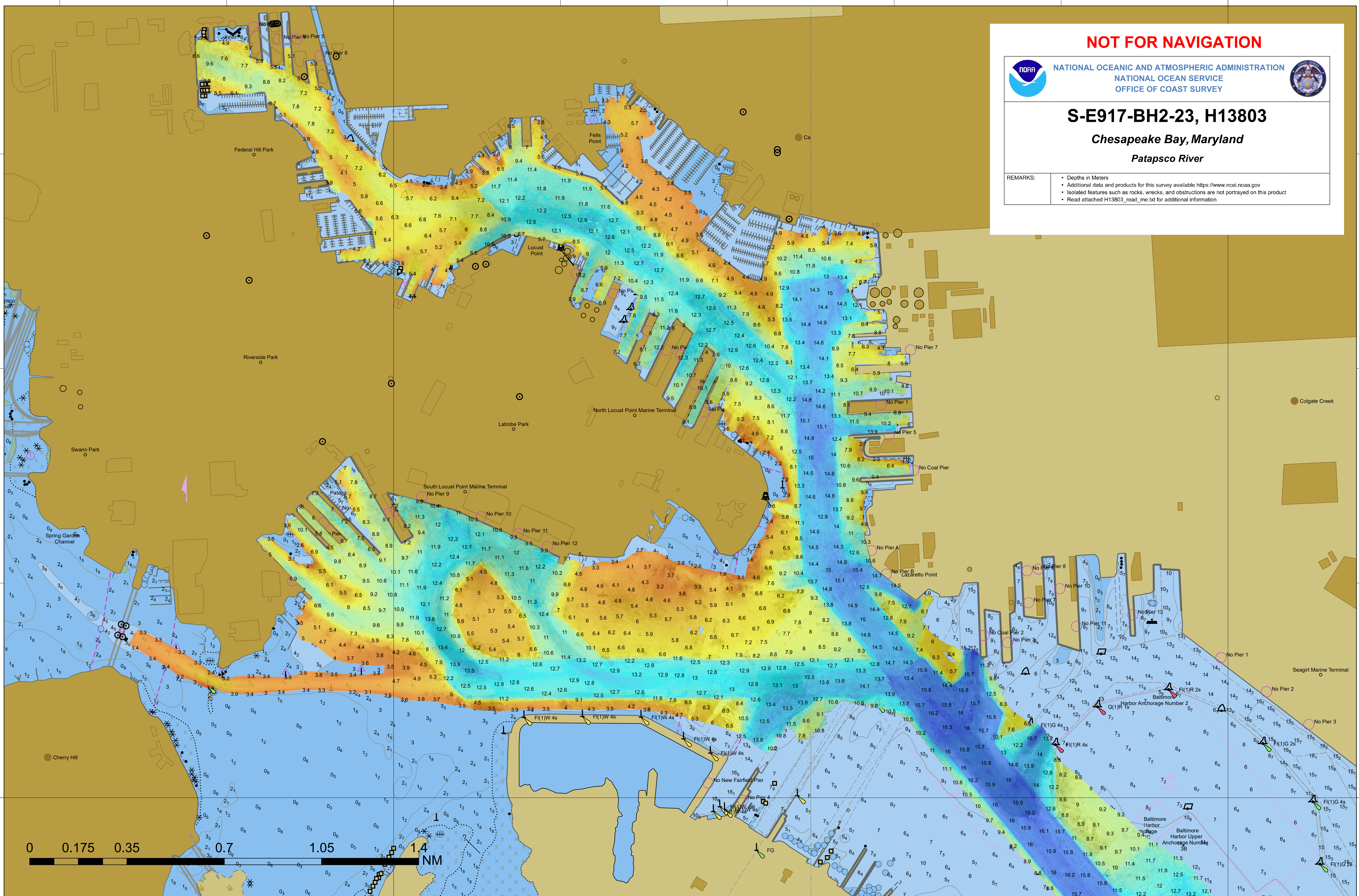
**S-E917-BH2-23, H13803**

*Chesapeake Bay, Maryland*

*Patapsco River*

REMARKS:

- Depths in Meters
- Additional data and products for this survey available <https://www.ncei.noaa.gov>
- Isolated features such as rocks, wrecks, and obstructions are not portrayed on this product
- Read attached H13803\_read\_me.txt for additional information

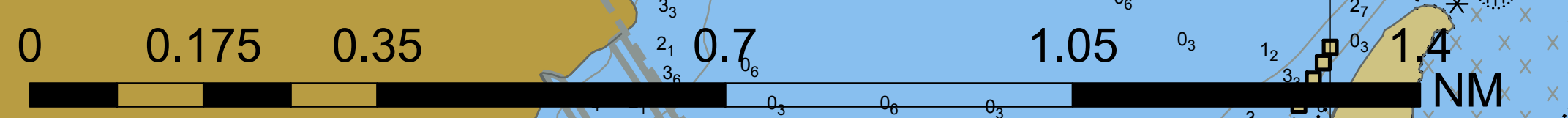


39°15'0"N

39°15'0"N

76°36'0"W

76°33'0"W



**NOT FOR NAVIGATION**



NATIONAL OCEANIC AND ATMOSPHERIC ADMINISTRATION  
NATIONAL OCEAN SERVICE  
OFFICE OF COAST SURVEY



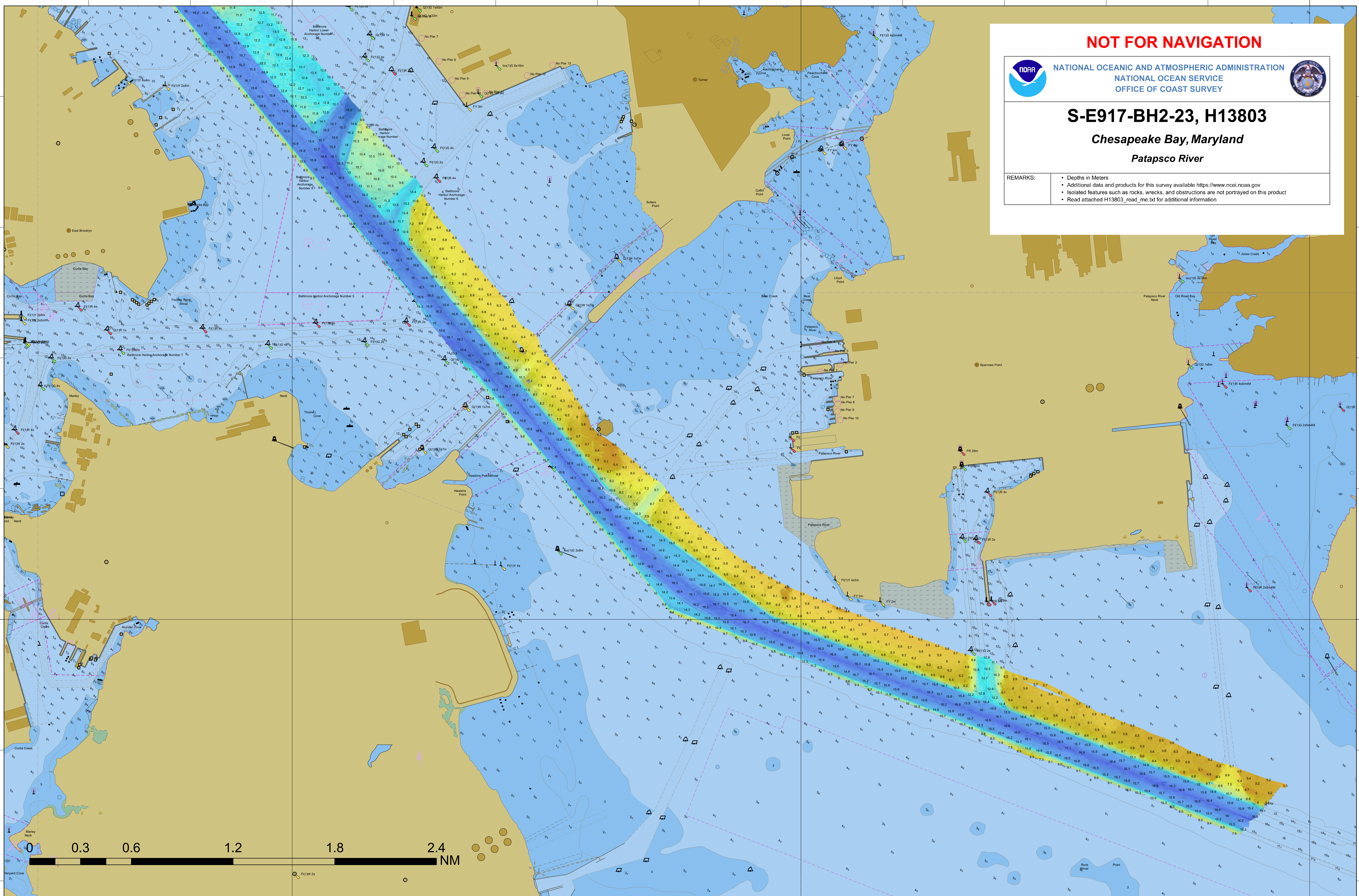
**S-E917-BH2-23, H13803**

*Chesapeake Bay, Maryland*

*Patapsco River*

REMARKS:

- Depths in Meters
- Additional data and products for this survey available <https://www.ncei.noaa.gov>
- Isolated features such as rocks, wrecks, and obstructions are not portrayed on this product
- Read attached H13803\_read\_me.txt for additional information



39°12'0"N

39°12'0"N

76°33'0"W

76°30'0"W

76°27'0"W