

87°54'0"W 87°51'0"W 87°48'0"W 87°45'0"W 87°42'0"W 87°39'0"W

42°39'0"N

42°36'0"N

42°33'0"N

42°30'0"N

42°27'0"N

42°24'0"N

42°39'0"N

42°36'0"N

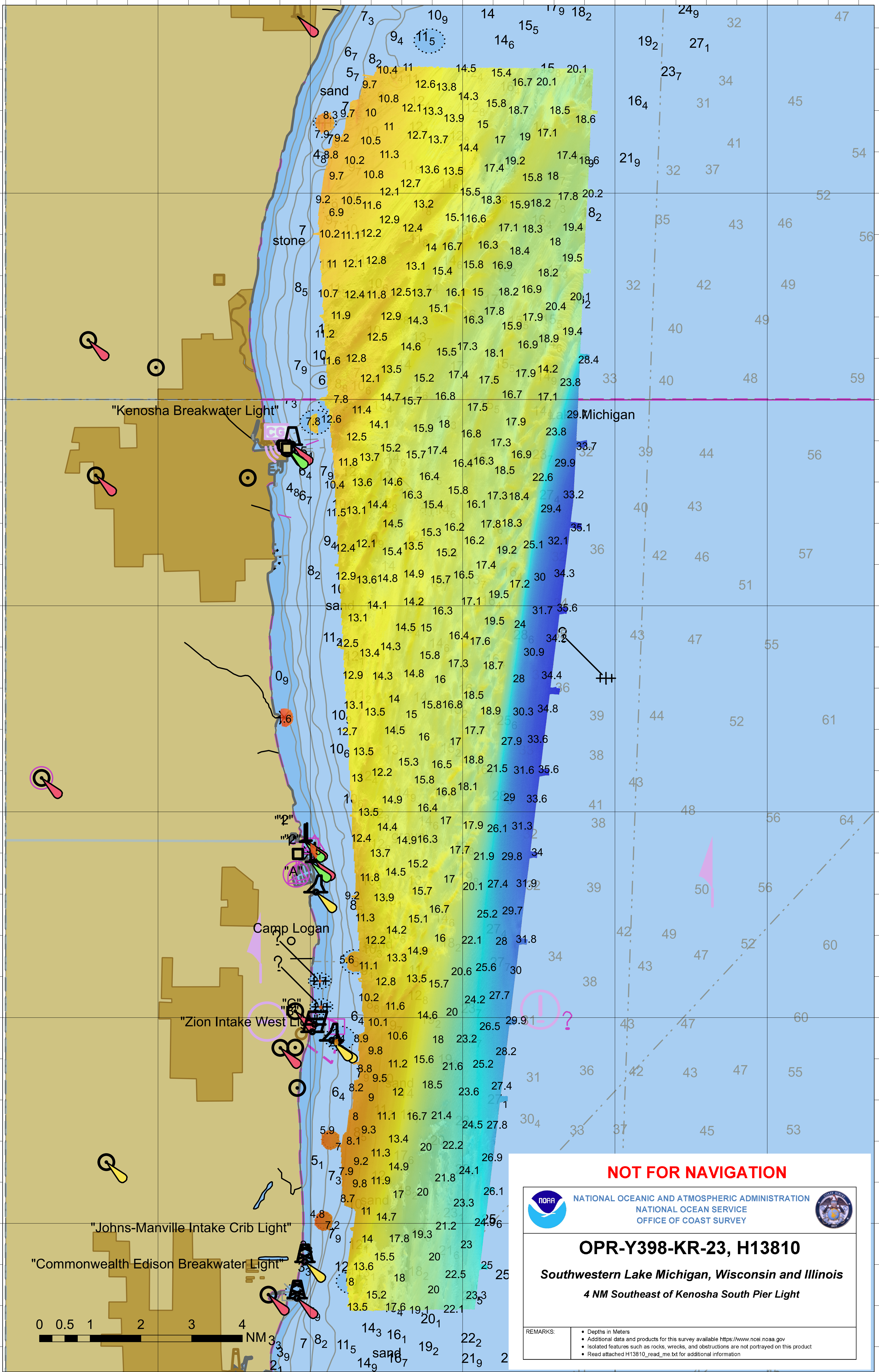
42°33'0"N

42°30'0"N

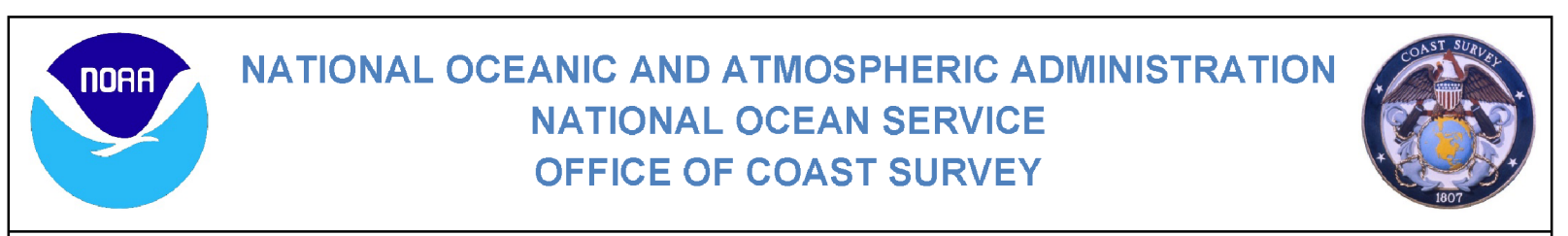
42°27'0"N

42°24'0"N

87°54'0"W 87°51'0"W 87°48'0"W 87°45'0"W 87°42'0"W 87°39'0"W



**NOT FOR NAVIGATION**



**OPR-Y398-KR-23, H13810**

**Southwestern Lake Michigan, Wisconsin and Illinois**  
**4 NM Southeast of Kenosha South Pier Light**

- REMARKS:
- Depths in Meters
  - Additional data and products for this survey available <https://www.ncei.noaa.gov>
  - Isolated features such as rocks, wrecks, and obstructions are not portrayed on this product
  - Read attached H13810\_read\_me.txt for additional information