

# Preliminary As Final Tidal Zoning for M-1905-NF-2009, H12006 Caribbean Sea, PR

975-1639 CHARLOTTE AMALIE

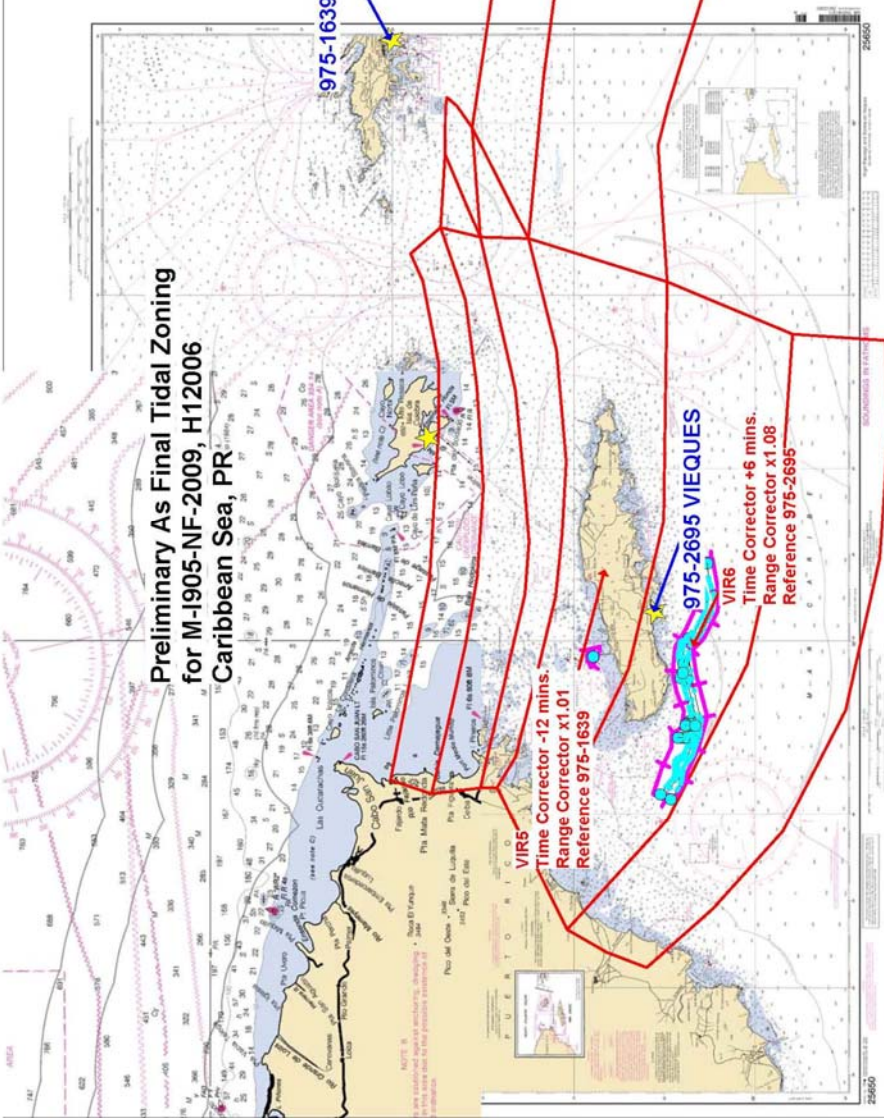
VIR5

Time Corrector -12 mins.  
Range Corrector x1.01  
Reference 975-1639

975-2695 VIEQUES

VIR6

Time Corrector +6 mins.  
Range Corrector x1.08  
Reference 975-2695



NOTES:  
1. This chart is based on the latest available information.  
2. This chart is not to be used for navigation purposes.  
3. This chart is not to be used for navigation purposes.

24650