

145°13'E

145°14'E

20° 02' N

20° 02' N

20° 01' N

20° 01' N

20° N

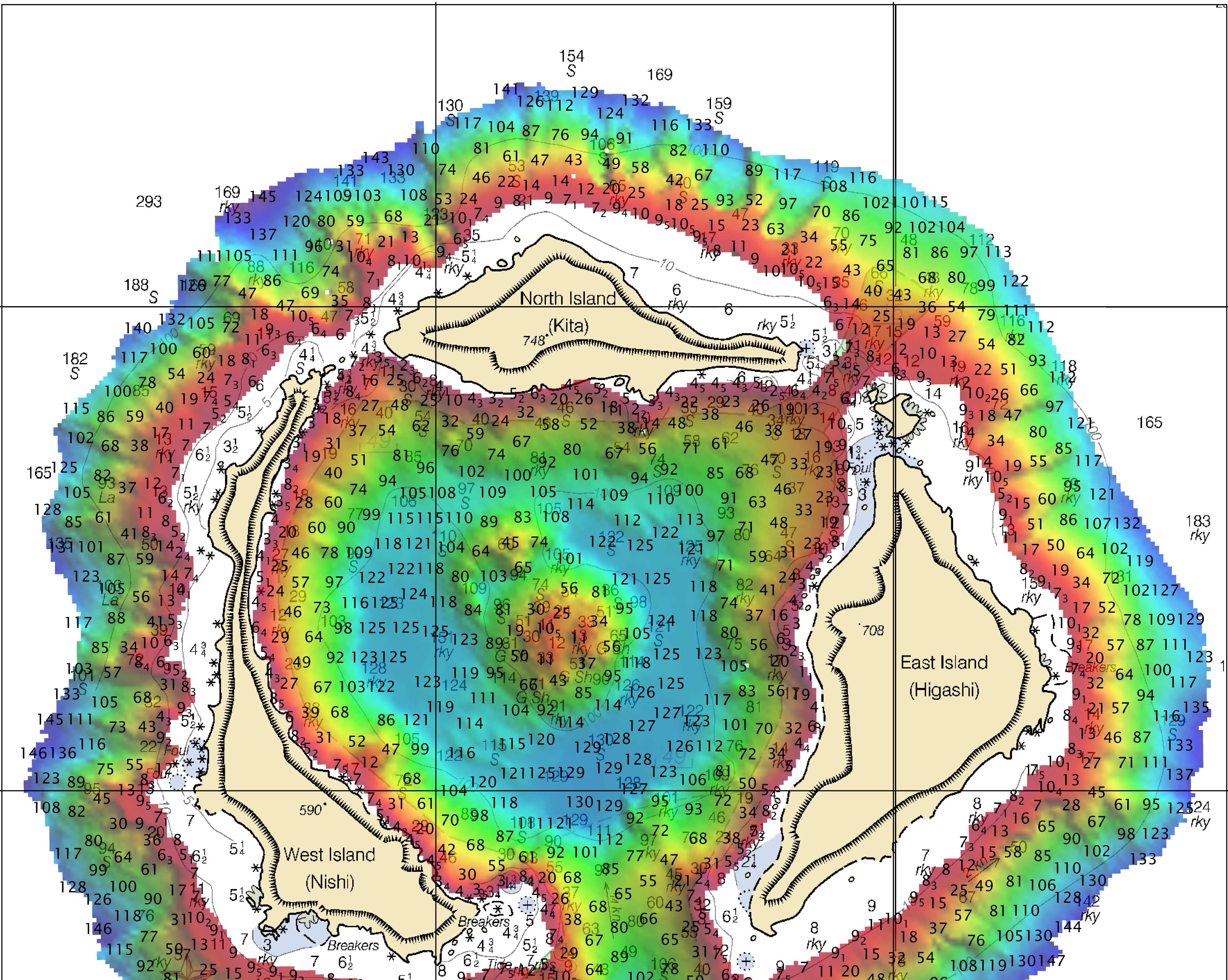
20° N

19° 59' N

19° 59' N

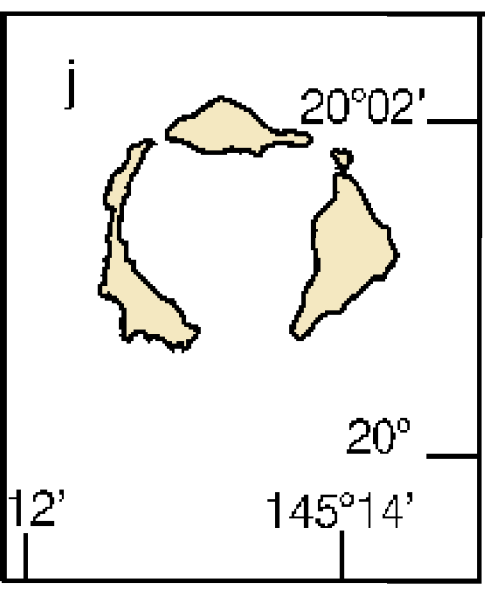
145°13'E

145°14'E



SOURCE

Japanese Surveys partial bottom co



SOURCE DIAGRAM

The outlined areas represent the limits of the most hydrographic survey information that has been evaluated for charting. Surveys have been banded in this diagram by type of survey. Channels maintained by the U.S. Army Engineers are periodically resurveyed and are not shown in this diagram. Refer to Chapter 1, United States Coast Pilot for more information.

MARIANA ISLANDS MAUG ISLAND

Scale 1:26,420 at Lat 20°00' N
SOUNDINGS IN FATHOMS

NOT FOR NAVIGATION



AHI-07-03, W00258

North Pacific Ocean, Northern Mariana Islands
Maug Islands and Vicinity

REMARKS: - Depths in Fathoms
- Additional data and products for this survey available <http://www.ngdc.noaa.gov>
- Isolated features such as rocks, wrecks, and obstructions are not portrayed on this product
- Read attached W00258_read_me.txt for additional information

