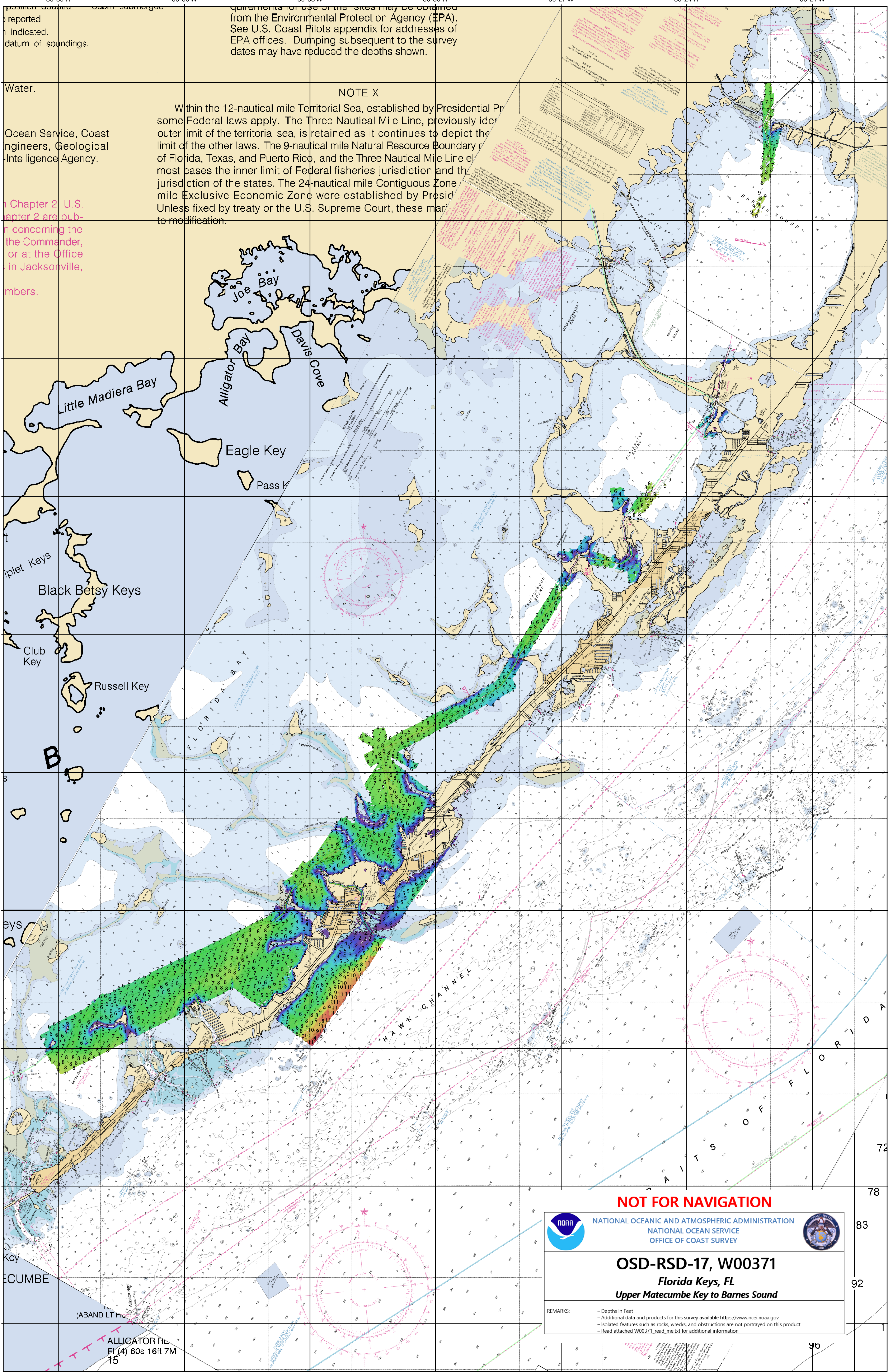


Requirements for use of the sites may be obtained from the Environmental Protection Agency (EPA). See U.S. Coast Pilots appendix for addresses of EPA offices. Dumping subsequent to the survey dates may have reduced the depths shown.

NOTE X

Within the 12-nautical mile Territorial Sea, established by Presidential Proclamation, some Federal laws apply. The Three Nautical Mile Line, previously identified as the outer limit of the territorial sea, is retained as it continues to depict the limit of the other laws. The 9-nautical mile Natural Resource Boundary of Florida, Texas, and Puerto Rico, and the Three Nautical Mile Line in most cases the inner limit of Federal fisheries jurisdiction and the jurisdiction of the states. The 24-nautical mile Contiguous Zone and the 200-nautical mile Exclusive Economic Zone were established by Presidential Proclamation. Unless fixed by treaty or the U.S. Supreme Court, these maritime boundaries are subject to modification.

Chapter 2 U.S. Chapter 2 are published concerning the the Commander, or at the Office in Jacksonville, numbers.



NOT FOR NAVIGATION



NATIONAL OCEANIC AND ATMOSPHERIC ADMINISTRATION
NATIONAL OCEAN SERVICE
OFFICE OF COAST SURVEY



OSD-RSD-17, W00371

Florida Keys, FL
Upper Matecumbe Key to Barnes Sound

REMARKS:

- Depths in Feet
- Additional data and products for this survey available <https://www.ncei.noaa.gov>
- Isolated features such as rocks, wrecks, and obstructions are not portrayed on this product
- Read attached W00371_read_me.txt for additional information

(ABAND LT H...)
ALLIGATOR RE...
FL (4) 60s 16ft 7M
15