

NOT FOR NAVIGATION



NATIONAL OCEANIC AND ATMOSPHERIC ADMINISTRATION
NATIONAL OCEAN SERVICE
OFFICE OF COAST SURVEY

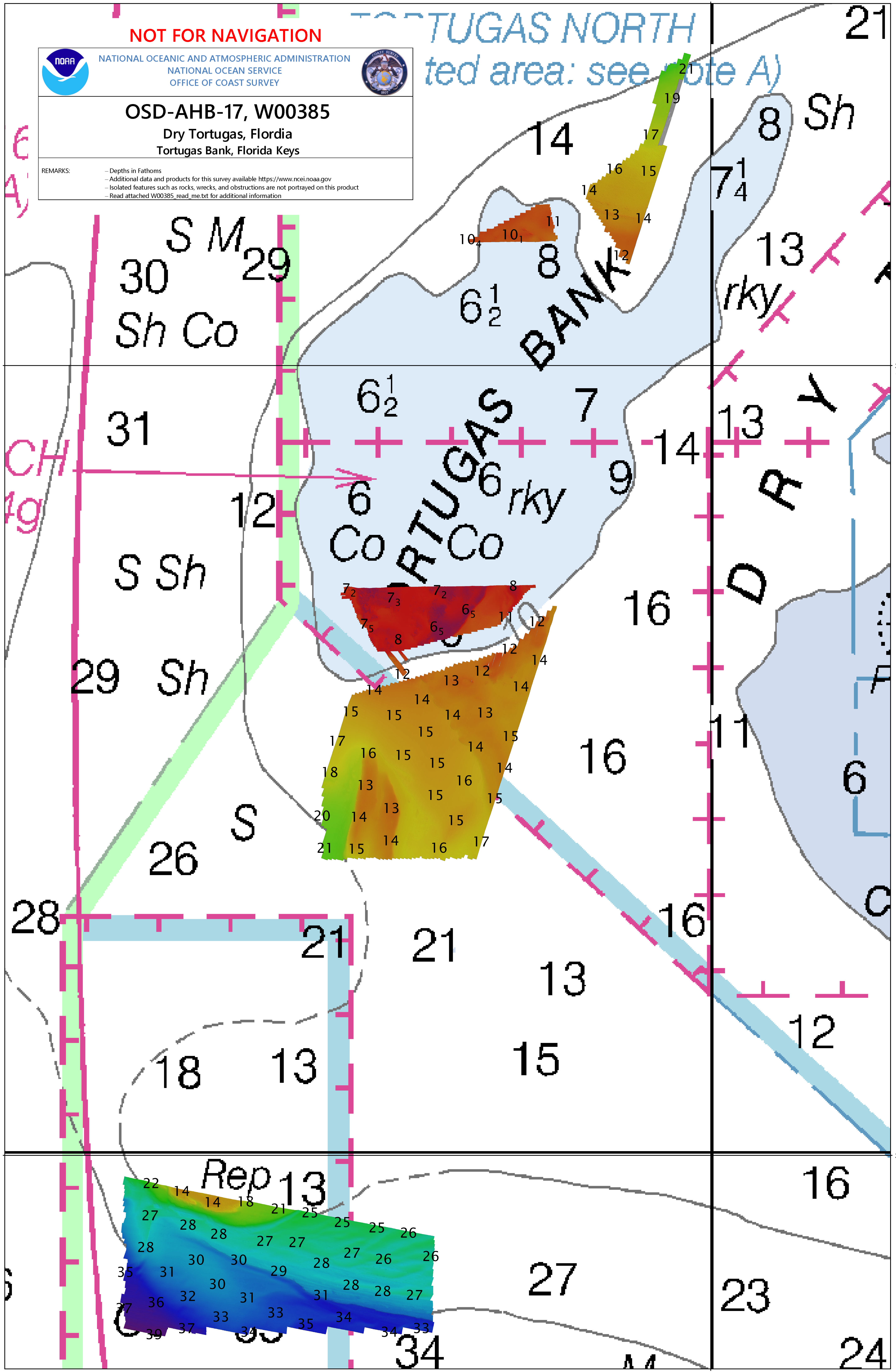


OSD-AHB-17, W00385

Dry Tortugas, Florida
Tortugas Bank, Florida Keys

REMARKS:
- Depths in Fathoms
- Additional data and products for this survey available <https://www.ncei.noaa.gov>
- Isolated features such as rocks, wrecks, and obstructions are not portrayed on this product
- Read attached W00385_read_me.txt for additional information

TUGAS NORTH
ted area: see note A)



24° 40' N

24° 40' N

24° 30' N

24° 30' N