

80°7'0"W

80°6'0"W

80°5'0"W

80°4'0"W

26°20'N

26°20'N

26°10'N

26°10'N

26°00'N

26°00'N

25°59'0"N

25°59'0"N

25°58'0"N

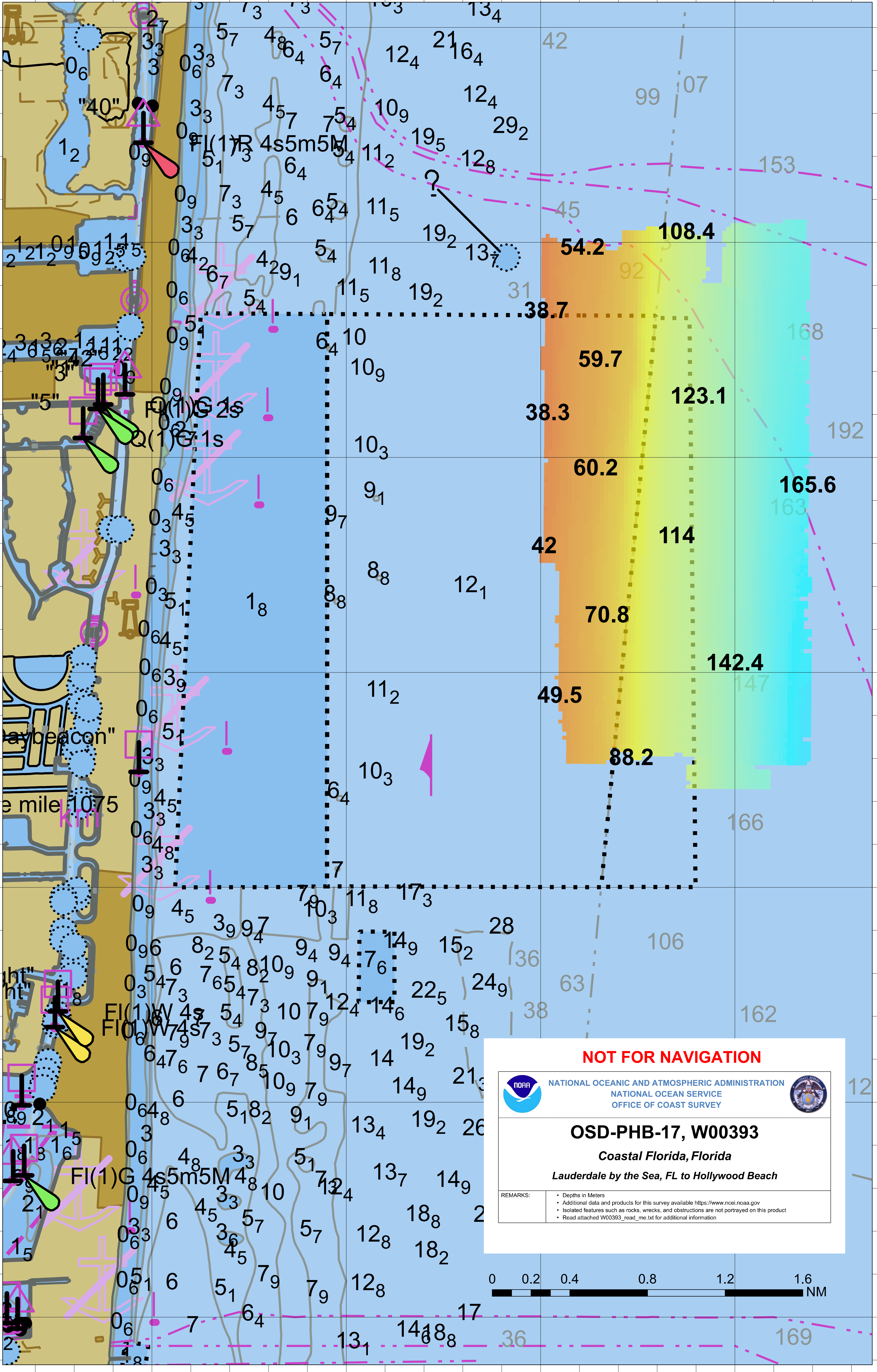
25°58'0"N

25°57'0"N

25°57'0"N

25°56'0"N

25°56'0"N



"40"

"5"

ay beacon"

e mile 10.75

ht"

FI(1)G 4s5m5M 48

2

FI(1)R 4s5m5M 54

FI(1)G 2s

Q(1)G 1s

FI(1)W 4s

FI(1)W 4s

FI(1)G 4s5m5M 48

NOT FOR NAVIGATION



NATIONAL OCEANIC AND ATMOSPHERIC ADMINISTRATION
NATIONAL OCEAN SERVICE
OFFICE OF COAST SURVEY



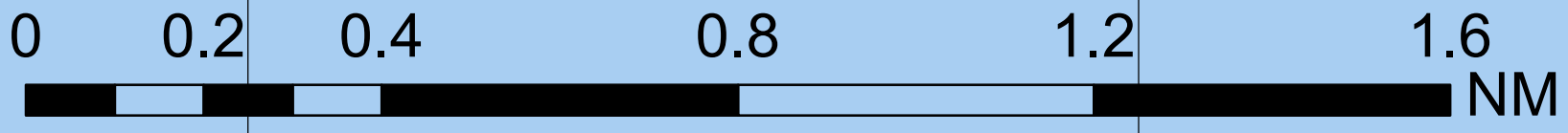
OSD-PHB-17, W00393

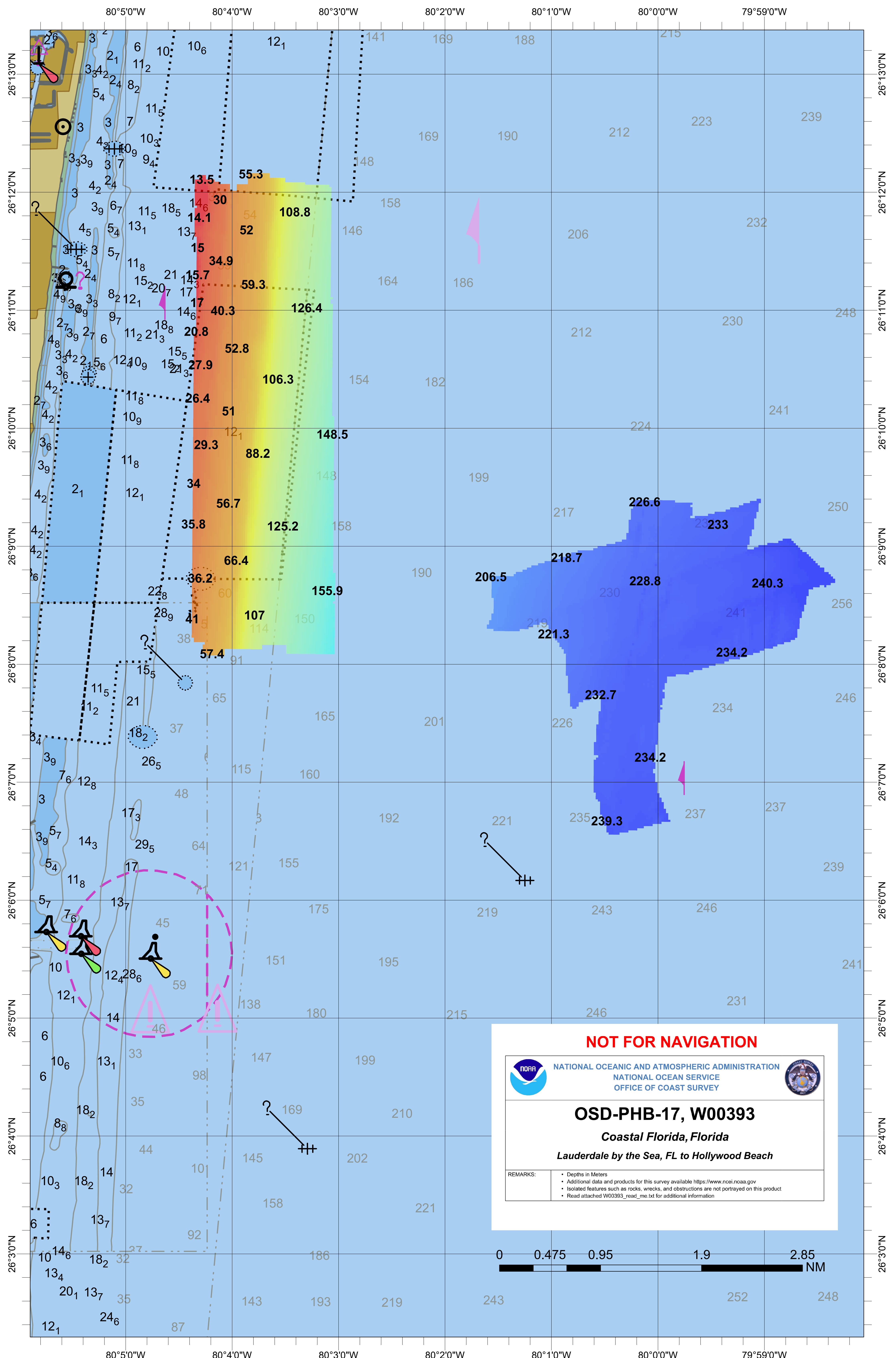
Coastal Florida, Florida

Lauderdale by the Sea, FL to Hollywood Beach

REMARKS:

- Depths in Meters
- Additional data and products for this survey available <https://www.ncei.noaa.gov>
- Isolated features such as rocks, wrecks, and obstructions are not portrayed on this product
- Read attached W00393_read_me.txt for additional information





NOT FOR NAVIGATION



NATIONAL OCEANIC AND ATMOSPHERIC ADMINISTRATION
NATIONAL OCEAN SERVICE
OFFICE OF COAST SURVEY

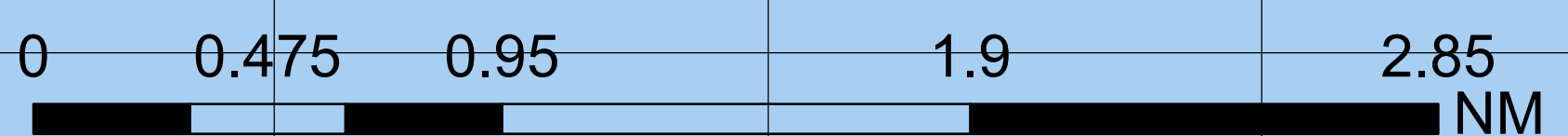


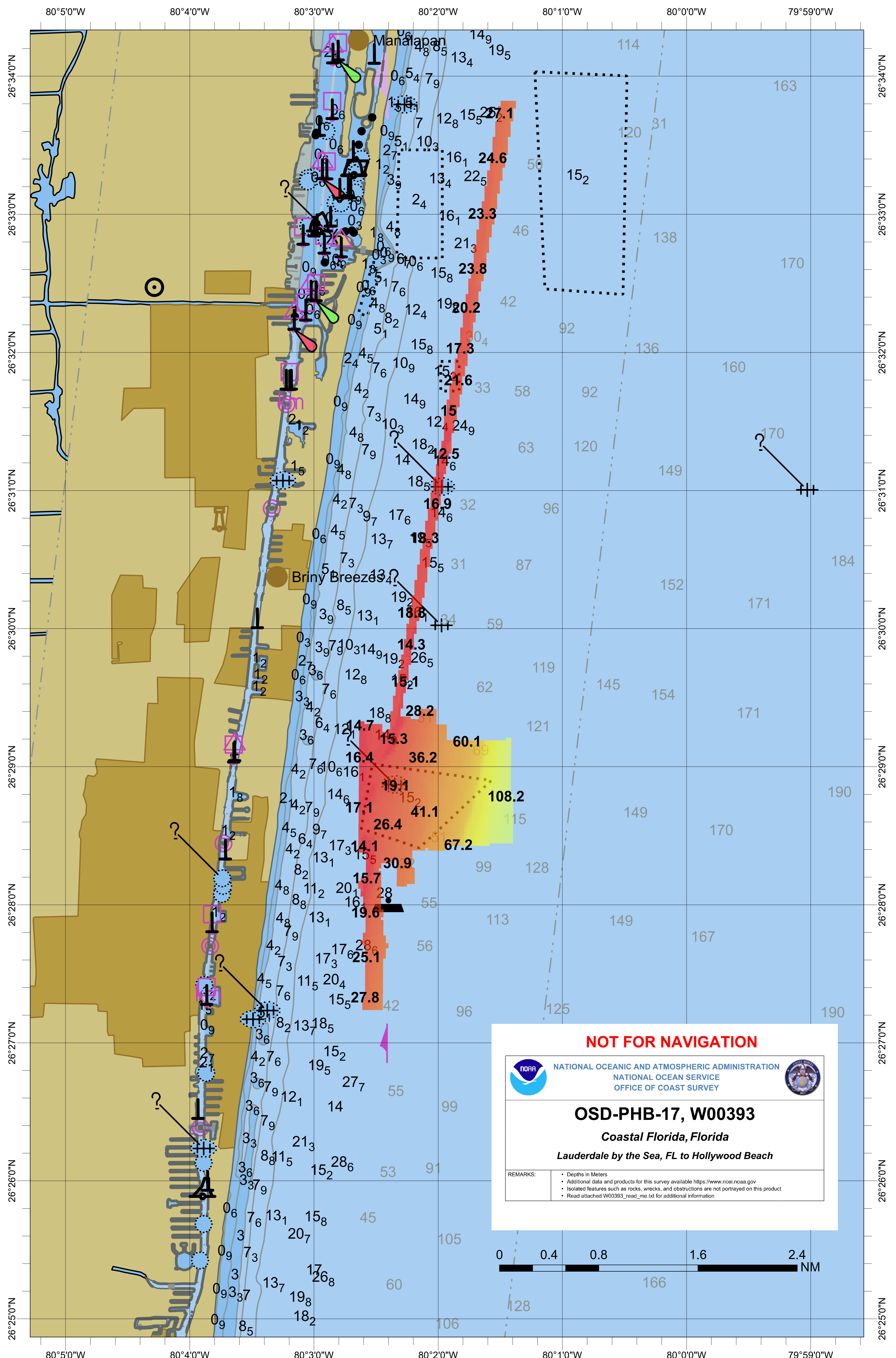
OSD-PHB-17, W00393

Coastal Florida, Florida

Lauderdale by the Sea, FL to Hollywood Beach

REMARKS: • Depths in Meters
• Additional data and products for this survey available <https://www.ncei.noaa.gov>
• Isolated features such as rocks, wrecks, and obstructions are not portrayed on this product
• Read attached W00393_read_me.txt for additional information





NOT FOR NAVIGATION



NATIONAL OCEANIC AND ATMOSPHERIC ADMINISTRATION
NATIONAL OCEAN SERVICE
OFFICE OF COAST SURVEY



OSD-PHB-17, W00393

Coastal Florida, Florida

Lauderdale by the Sea, FL to Hollywood Beach

- REMARKS:
- Depths in Meters
 - Additional data and products for this survey available <https://www.ncei.noaa.gov>
 - Isolated features such as rocks, wrecks, and obstructions are not portrayed on this product
 - Read attached W00393_read_me.txt for additional information



80°40'W

80°30'W

80°20'W

26°22'0"N

26°22'0"N

26°21'0"N

26°21'0"N

26°20'0"N

26°20'0"N

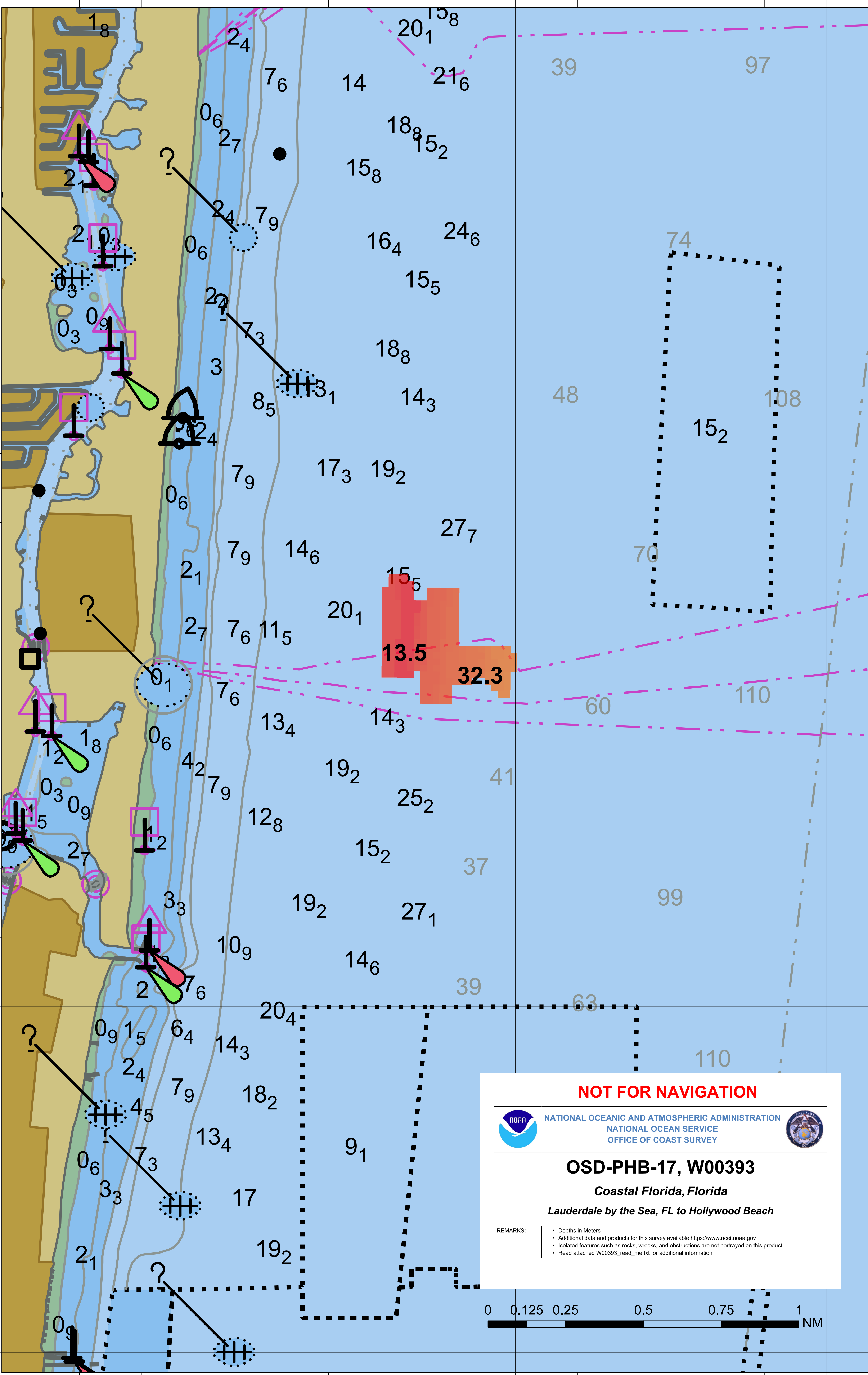
26°19'0"N

26°19'0"N

80°40'W

80°30'W

80°20'W



NOT FOR NAVIGATION



NATIONAL OCEANIC AND ATMOSPHERIC ADMINISTRATION
NATIONAL OCEAN SERVICE
OFFICE OF COAST SURVEY



OSD-PHB-17, W00393

Coastal Florida, Florida

Lauderdale by the Sea, FL to Hollywood Beach

- REMARKS:
- Depths in Meters
 - Additional data and products for this survey available <https://www.ncei.noaa.gov>
 - Isolated features such as rocks, wrecks, and obstructions are not portrayed on this product
 - Read attached W00393_read_me.txt for additional information

