

73°50'W

73°40'W

# NOT FOR NAVIGATION



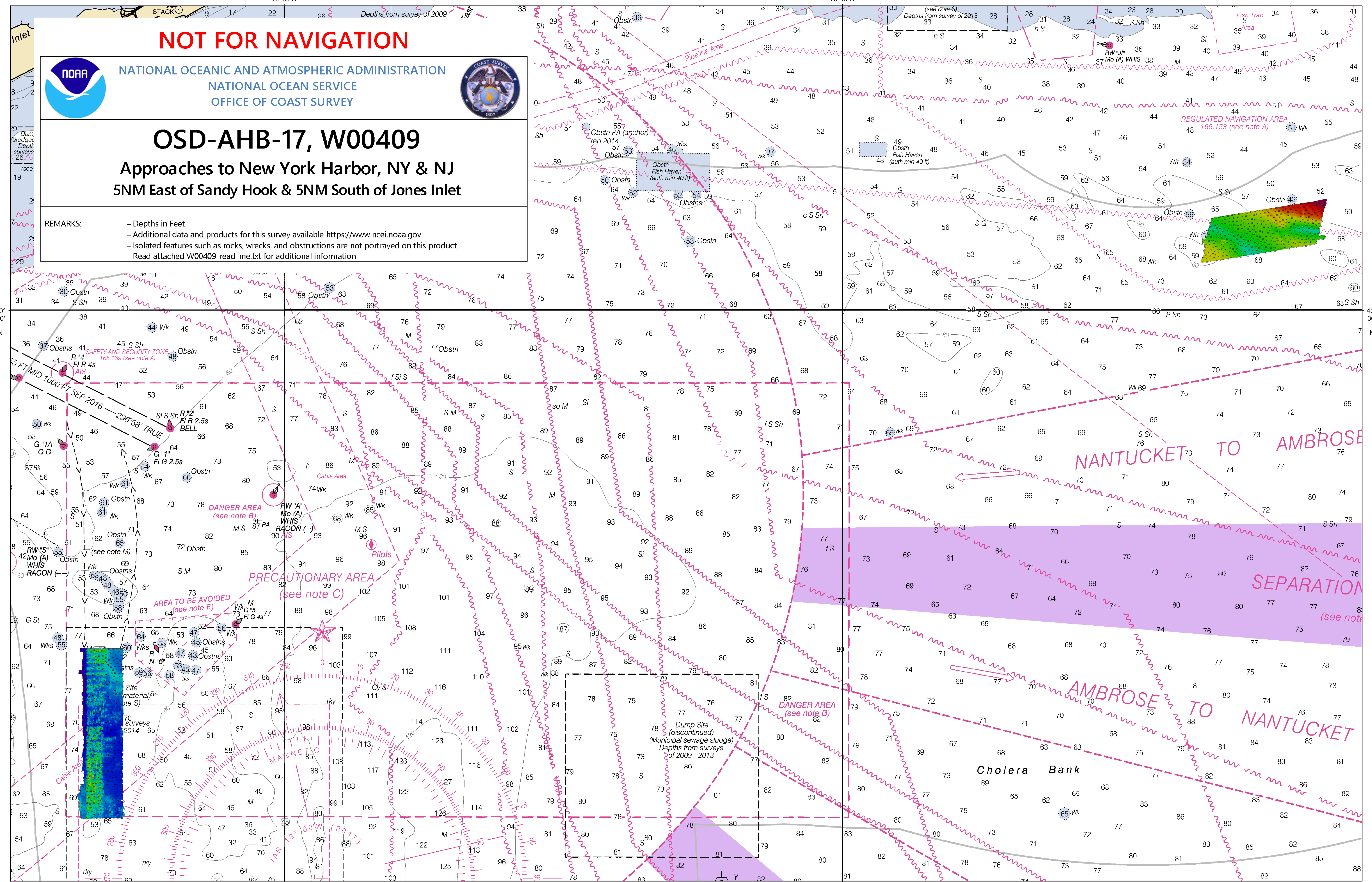
NATIONAL OCEANIC AND ATMOSPHERIC ADMINISTRATION  
NATIONAL OCEAN SERVICE  
OFFICE OF COAST SURVEY



## OSD-AHB-17, W00409

### Approaches to New York Harbor, NY & NJ 5NM East of Sandy Hook & 5NM South of Jones Inlet

- REMARKS:
- Depths in Feet
  - Additional data and products for this survey available <https://www.ncei.noaa.gov>
  - Isolated features such as rocks, wrecks, and obstructions are not portrayed on this product
  - Read attached W00409\_read\_me.txt for additional information



73°50'W

73°40'W