

## 6.0 Data Post-processing

The following is a summary of the procedures used for post-processing and analysis of survey data using Qimera (v.1.3.6) and Fledermaus (v.7.7.0) software.

### 6.1 Horizontal Datum

The horizontal datum for these data is WGS 84 projected in UTM zone 19N (meters).

### 6.2 Vertical Datum and Water Level Corrections

The vertical datum for these data is mean lower-low water (MLLW) level in meters. A tidal zoning file (.zdf; provided by NOAA CO-OPS) containing time and range corrections for verified data referenced from the Portland, ME (8418150) tide gauge was applied to all areas surveyed (Figures 8 and 9). Time corrections, tide height offsets, and tide scale (range) for each zone are listed in Table 8.

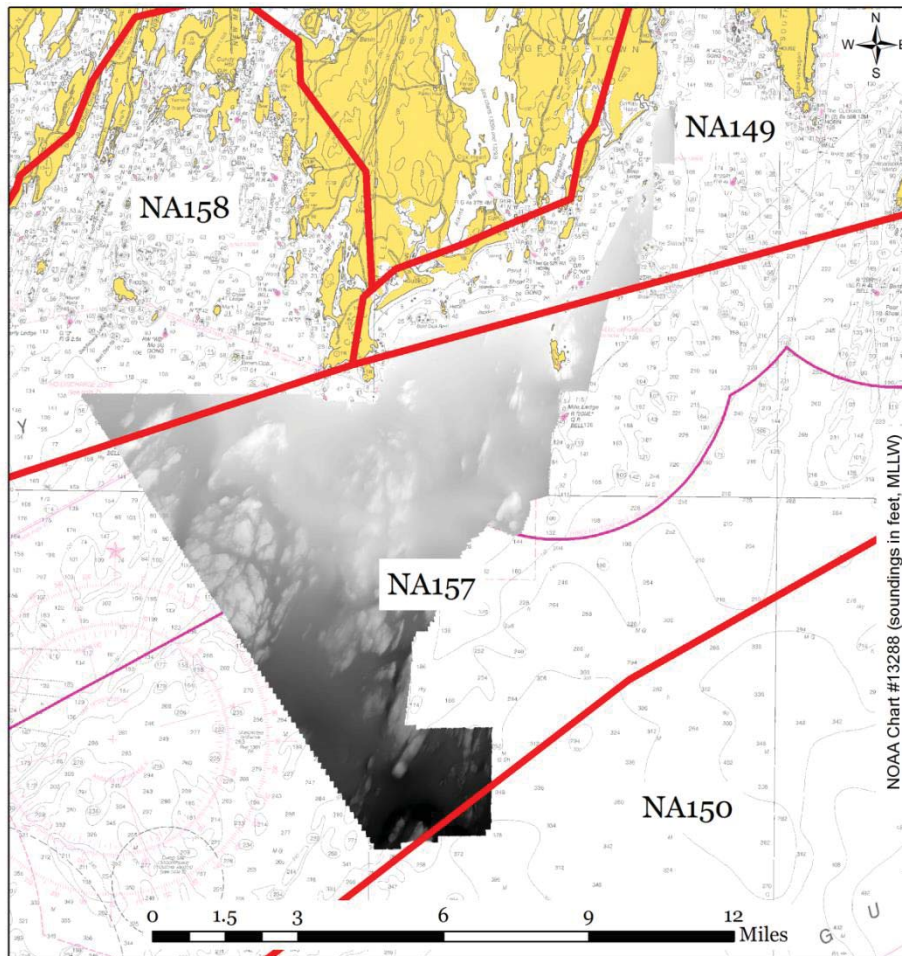


Figure 8. Tide zones (outlined in red) relative to mainscheme survey coverage.