

120°40'W

120°20'W

34°
20'
N

34°
20'
N

NOT FOR NAVIGATION

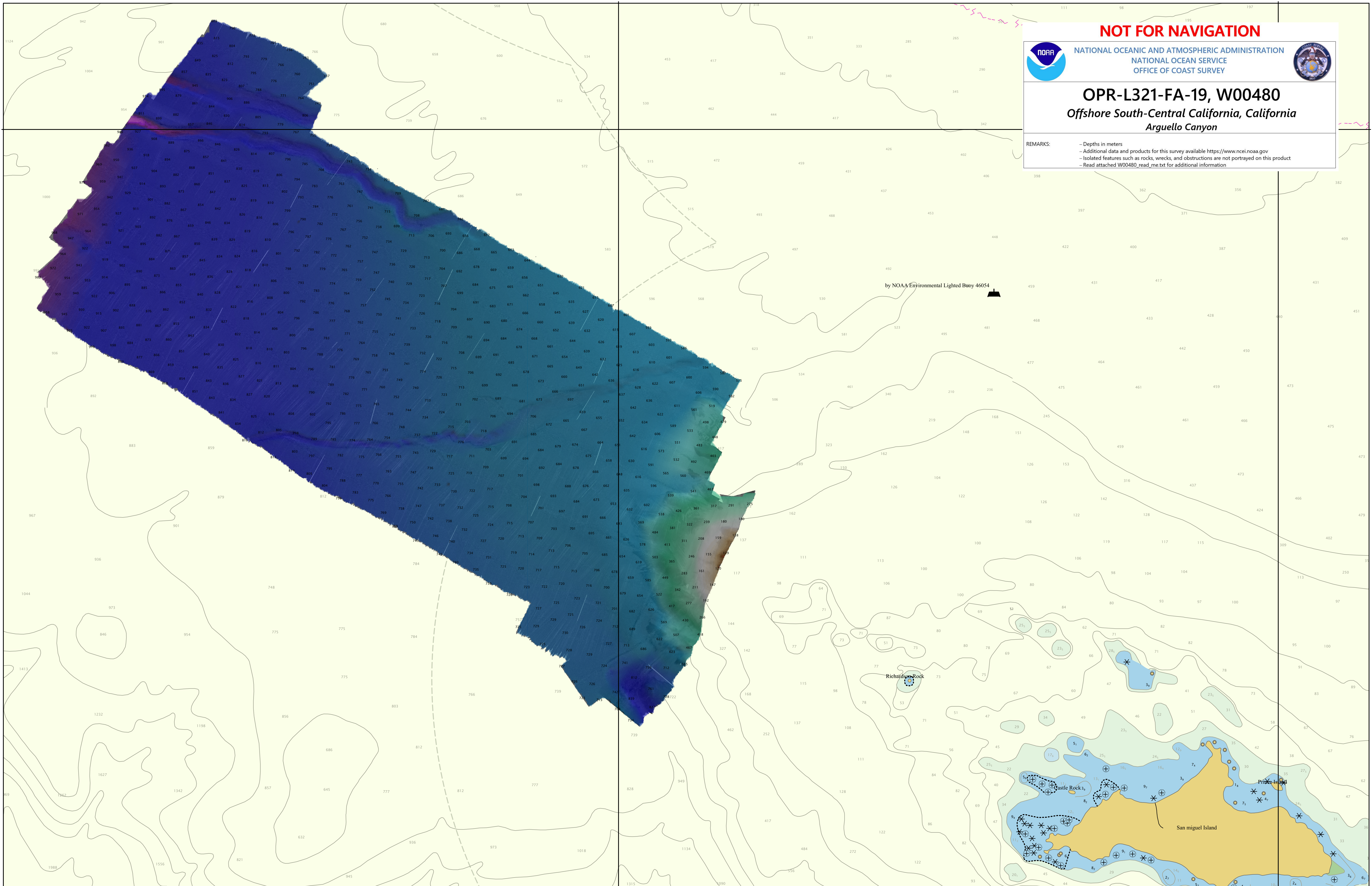


NATIONAL OCEANIC AND ATMOSPHERIC ADMINISTRATION
NATIONAL OCEAN SERVICE
OFFICE OF COAST SURVEY



OPR-L321-FA-19, W00480
Offshore South-Central California, California
Arguello Canyon

REMARKS:
- Depths in meters
- Additional data and products for this survey available <https://www.ncei.noaa.gov>
- Isolated features such as rocks, wrecks, and obstructions are not portrayed on this product
- Read attached W00480_read_me.txt for additional information



120°40'W

120°20'W