

70°48'W

70°45'W

42° 57' N

42° 57' N

42° 54' N

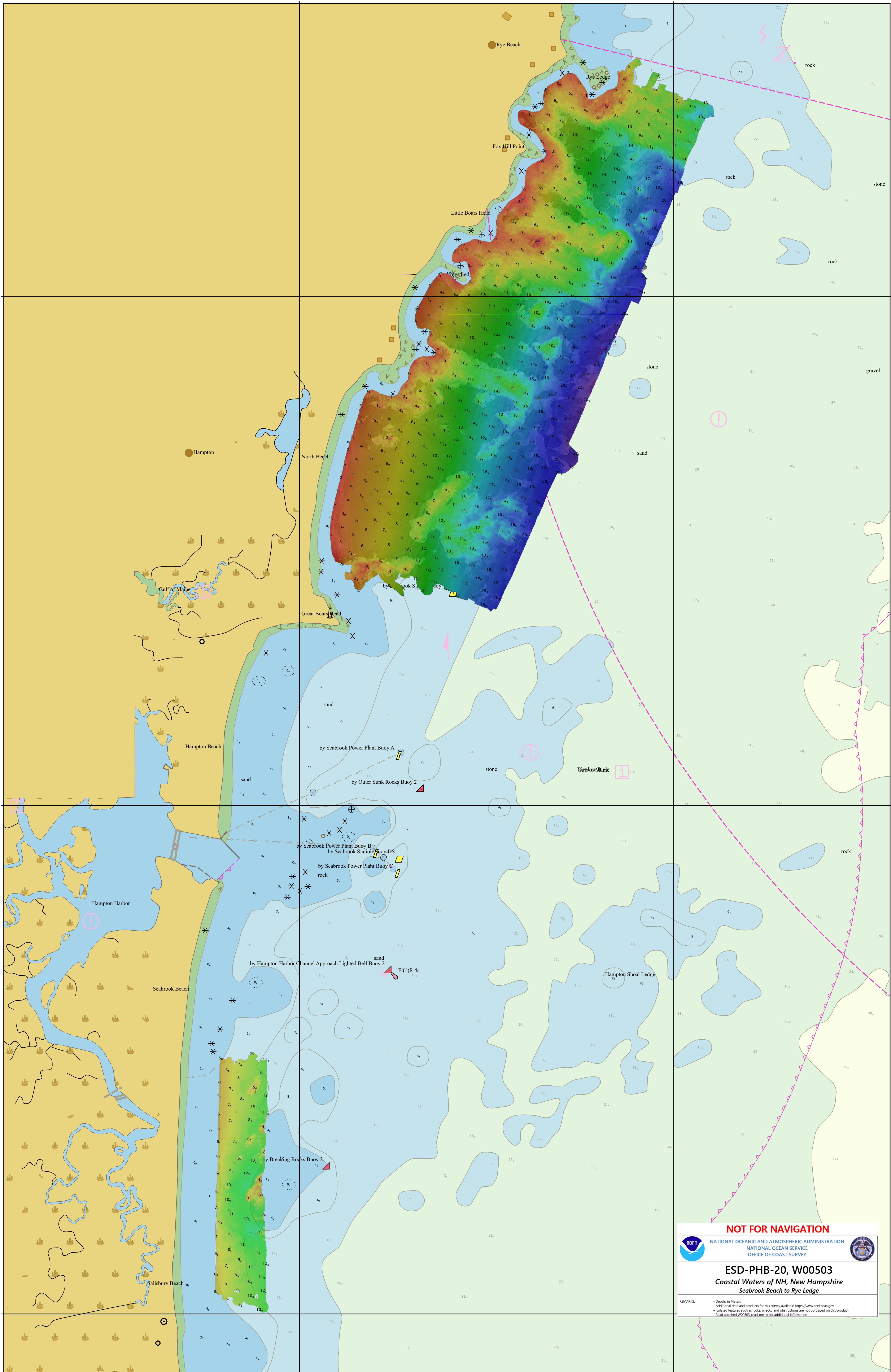
42° 54' N

42° 51' N

42° 51' N

70°48'W

70°45'W



**NOT FOR NAVIGATION**

NATIONAL OCEANIC AND ATMOSPHERIC ADMINISTRATION  
 NATIONAL OCEAN SERVICE  
 OFFICE OF COAST SURVEY

**ESD-PHB-20, W00503**  
*Coastal Waters of NH, New Hampshire*  
*Seabrook Beach to Rye Ledge*

REMARKS:
 

- Depths in Meters
- Additional data and products for this survey available <https://www.noc.noaa.gov>
- Isolated features such as rocks, wrecks, and obstructions are not portrayed on this product
- Read attached W00503\_read\_me.txt for additional information