

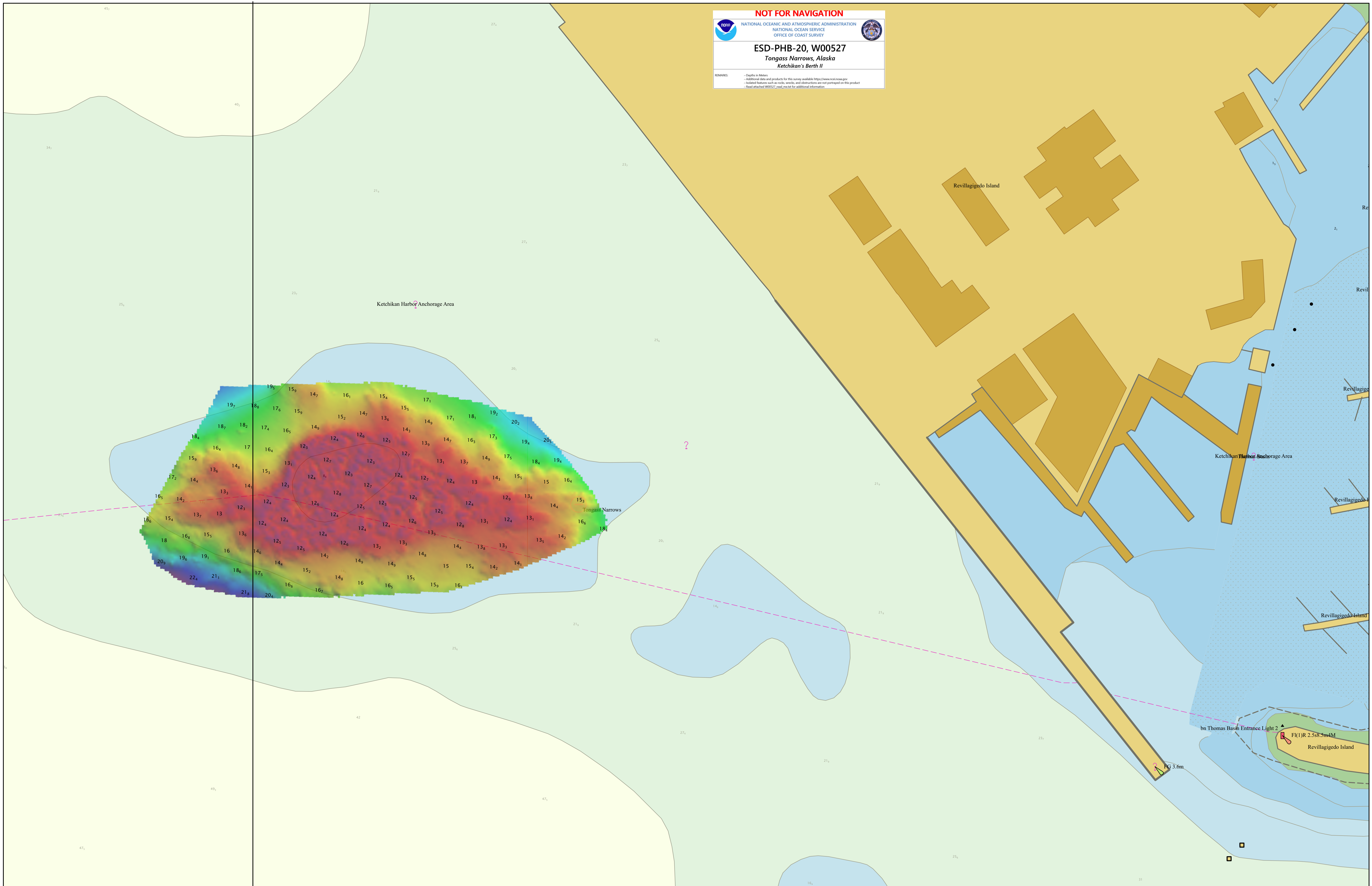
131°39'W

NOT FOR NAVIGATION

NATIONAL OCEANIC AND ATMOSPHERIC ADMINISTRATION
NATIONAL OCEAN SERVICE
OFFICE OF COAST SURVEY

ESD-PHB-20, W00527
Tongass Narrows, Alaska
Ketchikan's Berth II

REMARKS:
- Depths in Meters
- Additional data and products for this survey available <https://www.nmfs.noaa.gov>
- Isolated features such as rocks, wrecks, and obstructions are not portrayed on this product
- Read attached W00527_read_me.txt for additional information



131°39'W