

97°21'W

97°18'W

97°15'W

26° 24' N

26° 24' N

26° 21' N

26° 21' N

26° 18' N

26° 18' N

26° 15' N

26° 15' N

26° 12' N

26° 12' N

97°21'W

97°18'W

97°15'W

bn Land Cut-Arroyo Colorado Daybeacon 120  
 bn Land Cut-Arroyo Colorado Daybeacon 121  
 bn Land Cut-Arroyo Colorado Daybeacon 122  
 bn Land Cut-Arroyo Colorado Light 123

bn Land Cut-Arroyo Colorado Daybeacon 125  
 bn Land Cut-Arroyo Colorado Daybeacon 126  
 bn Land Cut-Arroyo Colorado Light 127  
 bn Land Cut-Arroyo Colorado Daybeacon 129

bn Land Cut-Arroyo Colorado Daybeacon 131

by Land Cut-Arroyo Colorado Buoy 133

by Land Cut-Arroyo Colorado Buoy 135

bn Land Cut-Arroyo Colorado Light 131

by Arroyo Colorado Cutoff Channel North Entrance Buoy 2N

by Arroyo Colorado Cutoff Channel Junction Buoy 3

by Arroyo Colorado Cutoff Channel North Entrance Buoy 3N

by Arroyo Colorado Cutoff Channel South Entrance Buoy 3S

by Arroyo Colorado Cutoff Channel South Entrance Buoy 3S

by Arroyo Colorado Cutoff Channel South Entrance Buoy 3S

by Arroyo Colorado Cutoff Channel South Entrance Buoy 3S

by Arroyo Colorado Cutoff Channel South Entrance Buoy 3S

by Arroyo Colorado Cutoff Channel South Entrance Buoy 3S

by Arroyo Colorado Cutoff Channel South Entrance Buoy 3S

by Arroyo Colorado Cutoff Channel South Entrance Buoy 3S

by Arroyo Colorado Cutoff Channel South Entrance Buoy 3S

by Arroyo Colorado Cutoff Channel South Entrance Buoy 3S

by Arroyo Colorado Cutoff Channel South Entrance Buoy 3S

by Arroyo Colorado Cutoff Channel South Entrance Buoy 3S

by Arroyo Colorado Cutoff Channel South Entrance Buoy 3S

by Arroyo Colorado Cutoff Channel South Entrance Buoy 3S

by Arroyo Colorado Cutoff Channel South Entrance Buoy 3S

by Arroyo Colorado Cutoff Channel South Entrance Buoy 3S

by Arroyo Colorado Cutoff Channel South Entrance Buoy 3S

by Arroyo Colorado Cutoff Channel South Entrance Buoy 3S

by Arroyo Colorado Cutoff Channel South Entrance Buoy 3S

by Arroyo Colorado Cutoff Channel South Entrance Buoy 3S

by Arroyo Colorado Cutoff Channel South Entrance Buoy 3S

by Arroyo Colorado Cutoff Channel South Entrance Buoy 3S

by Arroyo Colorado Cutoff Channel South Entrance Buoy 3S

by Arroyo Colorado Cutoff Channel South Entrance Buoy 3S

by Arroyo Colorado Cutoff Channel South Entrance Buoy 3S

by Arroyo Colorado Cutoff Channel South Entrance Buoy 3S

by Arroyo Colorado Cutoff Channel South Entrance Buoy 3S

by Arroyo Colorado Cutoff Channel South Entrance Buoy 3S

by Arroyo Colorado Cutoff Channel South Entrance Buoy 3S

by Arroyo Colorado Cutoff Channel South Entrance Buoy 3S

by Arroyo Colorado Cutoff Channel South Entrance Buoy 3S

by Arroyo Colorado Cutoff Channel South Entrance Buoy 3S

by Arroyo Colorado Cutoff Channel South Entrance Buoy 3S

by Arroyo Colorado Cutoff Channel South Entrance Buoy 3S

bn Harlingen-Port Isabel Daybeacon 5

bn Harlingen-Port Isabel Light 7

bn Harlingen-Port Isabel Daybeacon 9

bn Harlingen-Port Isabel Daybeacon 11

bn Harlingen-Port Isabel Daybeacon 13

bn Harlingen-Port Isabel Daybeacon 15

bn Harlingen-Port Isabel Daybeacon 17

bn Harlingen-Port Isabel Daybeacon 19

bn Harlingen-Port Isabel Daybeacon 21

bn Harlingen-Port Isabel Daybeacon 23

bn Harlingen-Port Isabel Daybeacon 25

bn Harlingen-Port Isabel Daybeacon 27

bn Harlingen-Port Isabel Daybeacon 29

bn Harlingen-Port Isabel Daybeacon 31

bn Harlingen-Port Isabel Daybeacon 33

bn Harlingen-Port Isabel Daybeacon 35

bn Harlingen-Port Isabel Daybeacon 37

bn Harlingen-Port Isabel Daybeacon 39

bn Harlingen-Port Isabel Light 41

**NOT FOR NAVIGATION**

NATIONAL OCEANIC AND ATMOSPHERIC ADMINISTRATION  
 NATIONAL OCEAN SERVICE  
 OFFICE OF COAST SURVEY

**ESD-PHB-21, W00559**  
*Western Gulf of Mexico, Texas*  
*Lower Texas Coast*

REMARKS:  
 - Depths in meters  
 - Additional data and products for this survey available <https://www.ncei.noaa.gov>  
 - Isolated features such as rocks, wrecks, and obstructions are not portrayed on this product  
 - Read attached W00559\_read\_me.txt for additional information

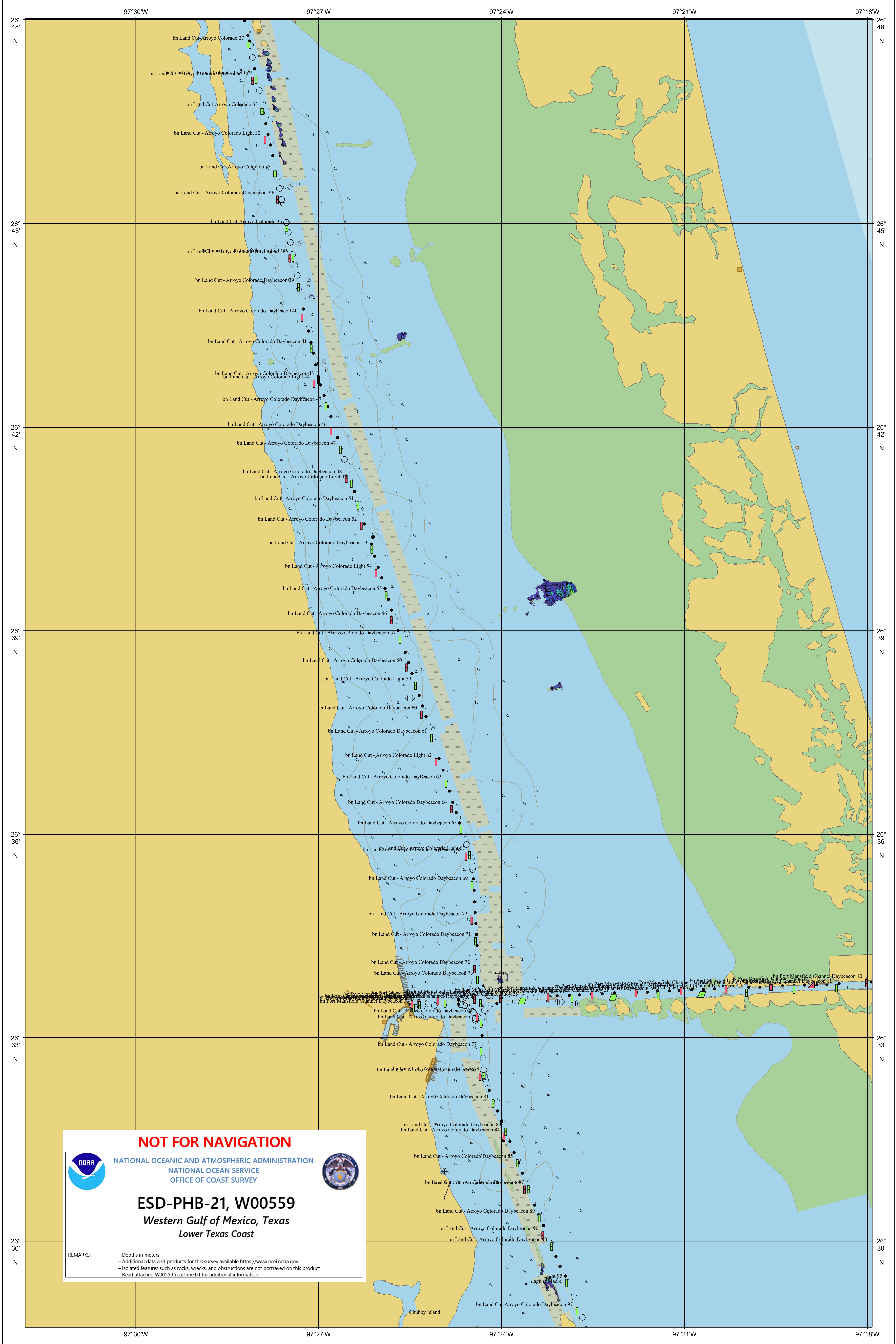
Padre Island

Medio Island

Primer Island

Ultimo Island

Gatin Island



97°30'W

97°27'W

97°24'W

97°21'W

97°18'W

26° 48' N  
26° 45' N  
26° 42' N  
26° 39' N  
26° 36' N  
26° 33' N  
26° 30' N

26° 48' N  
26° 45' N  
26° 42' N  
26° 39' N  
26° 36' N  
26° 33' N  
26° 30' N

97°30'W

97°27'W

97°24'W

97°21'W

97°18'W

**NOT FOR NAVIGATION**



NATIONAL OCEANIC AND ATMOSPHERIC ADMINISTRATION  
NATIONAL OCEAN SERVICE  
OFFICE OF COAST SURVEY



**ESD-PHB-21, W00559**  
*Western Gulf of Mexico, Texas*  
*Lower Texas Coast*

REMARKS:  
- Depths in meters  
- Additional data and products for this survey available <https://www.ncei.noaa.gov>  
- Isolated features such as rocks, wrecks, and obstructions are not portrayed on this product  
- Read attached W00559\_read\_me.txt for additional information

Chubby Island

Laguna Madre

bn Land Cut - Arroyo Colorado Daybeacon 97

97°27'W

97°24'W

97°21'W

27° 15' N

27° 15' N

27° 12' N

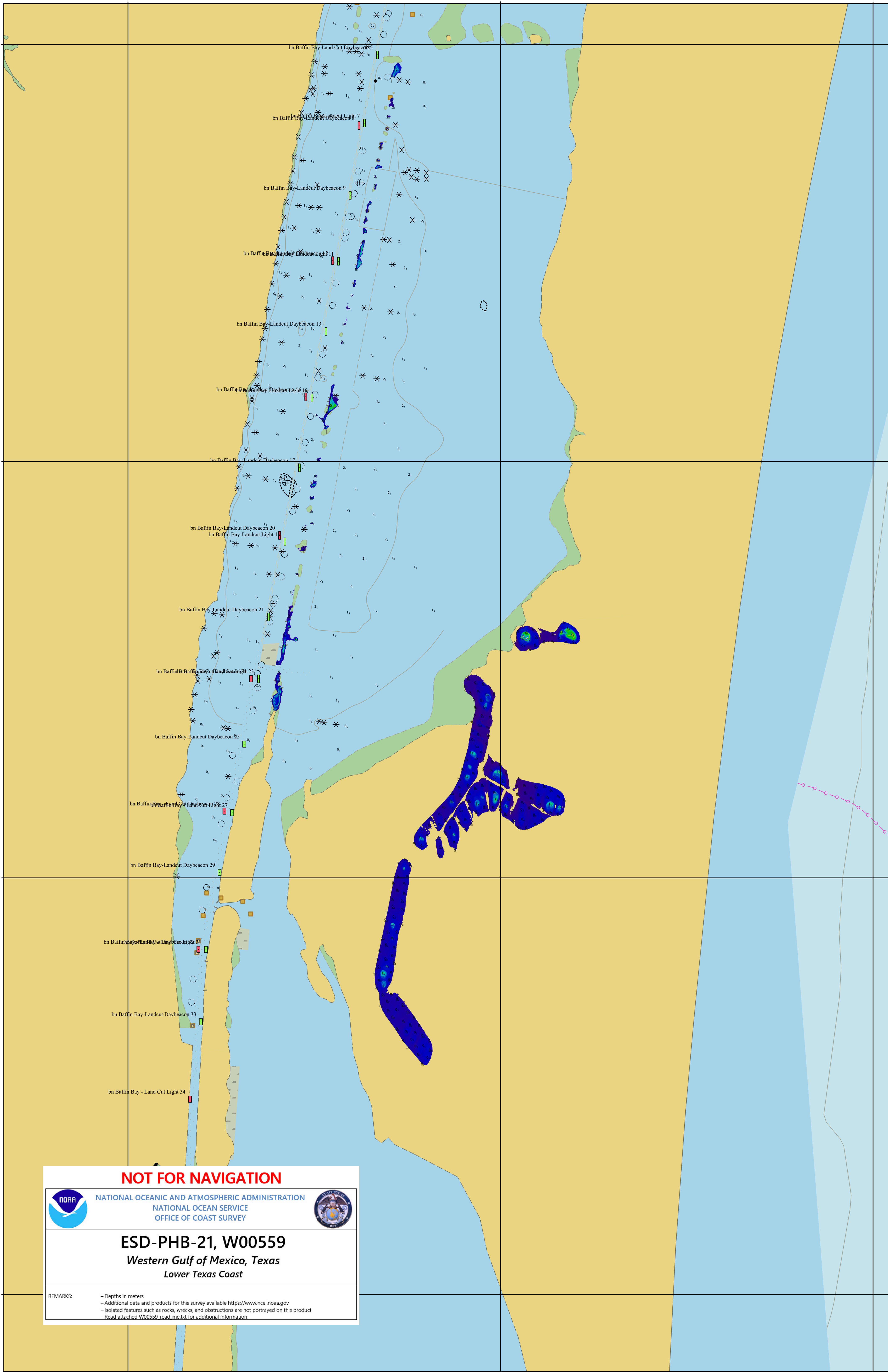
27° 12' N

27° 09' N

27° 09' N

27° 06' N

27° 06' N



**NOT FOR NAVIGATION**



NATIONAL OCEANIC AND ATMOSPHERIC ADMINISTRATION  
 NATIONAL OCEAN SERVICE  
 OFFICE OF COAST SURVEY



**ESD-PHB-21, W00559**  
*Western Gulf of Mexico, Texas*  
*Lower Texas Coast*

REMARKS:

- Depths in meters
- Additional data and products for this survey available <https://www.ncei.noaa.gov>
- Isolated features such as rocks, wrecks, and obstructions are not portrayed on this product
- Read attached W00559\_read\_me.txt for additional information

97°27'W

97°24'W

97°21'W

97°24'W

**NOT FOR NAVIGATION**



NATIONAL OCEANIC AND ATMOSPHERIC ADMINISTRATION  
NATIONAL OCEAN SERVICE  
OFFICE OF COAST SURVEY



**ESD-PHB-21, W00559**

*Western Gulf of Mexico, Texas  
Lower Texas Coast*

REMARKS:  
- Depths in meters  
- Additional data and products for this survey available <https://www.ncei.noaa.gov>  
- Isolated features such as rocks, wrecks, and obstructions are not portrayed on this product  
- Read attached W00559\_read\_me.txt for additional information

27° 21' N

27° 21' N

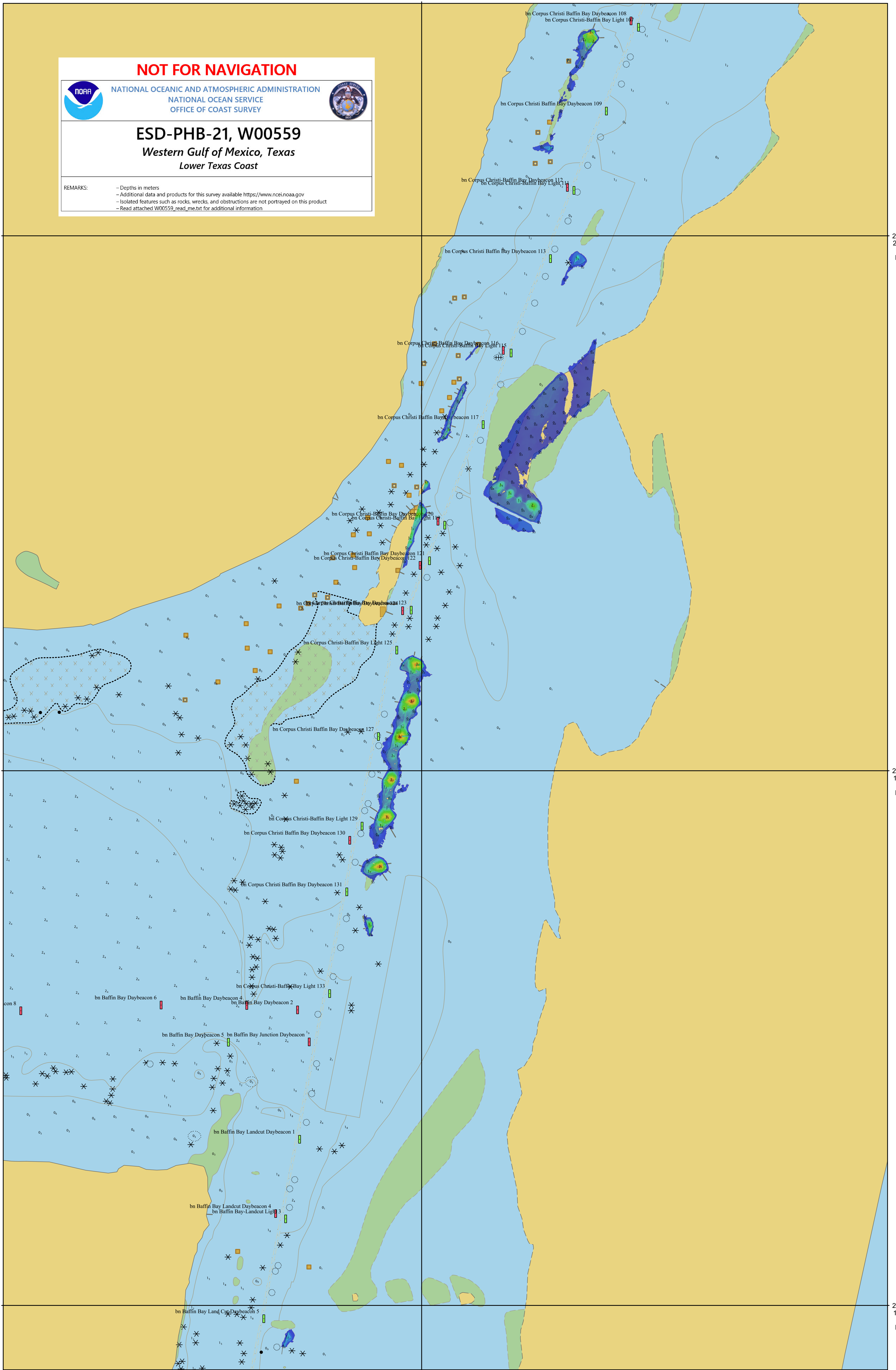
27° 18' N

27° 18' N

27° 15' N

27° 15' N

97°24'W



**NOT FOR NAVIGATION**



NATIONAL OCEANIC AND ATMOSPHERIC ADMINISTRATION  
NATIONAL OCEAN SERVICE  
OFFICE OF COAST SURVEY



**ESD-PHB-21, W00559**

*Western Gulf of Mexico, Texas  
Lower Texas Coast*

REMARKS:  
- Depths in meters  
- Additional data and products for this survey available <https://www.ncei.noaa.gov>  
- Isolated features such as rocks, wrecks, and obstructions are not portrayed on this product  
- Read attached W00559\_read\_me.txt for additional information

27° 39' N  
27° 36' N  
27° 33' N  
27° 30' N  
27° 27' N  
27° 24' N

27° 39' N  
27° 36' N  
27° 33' N  
27° 30' N  
27° 27' N  
27° 24' N

97°21'W

97°18'W

97°15'W

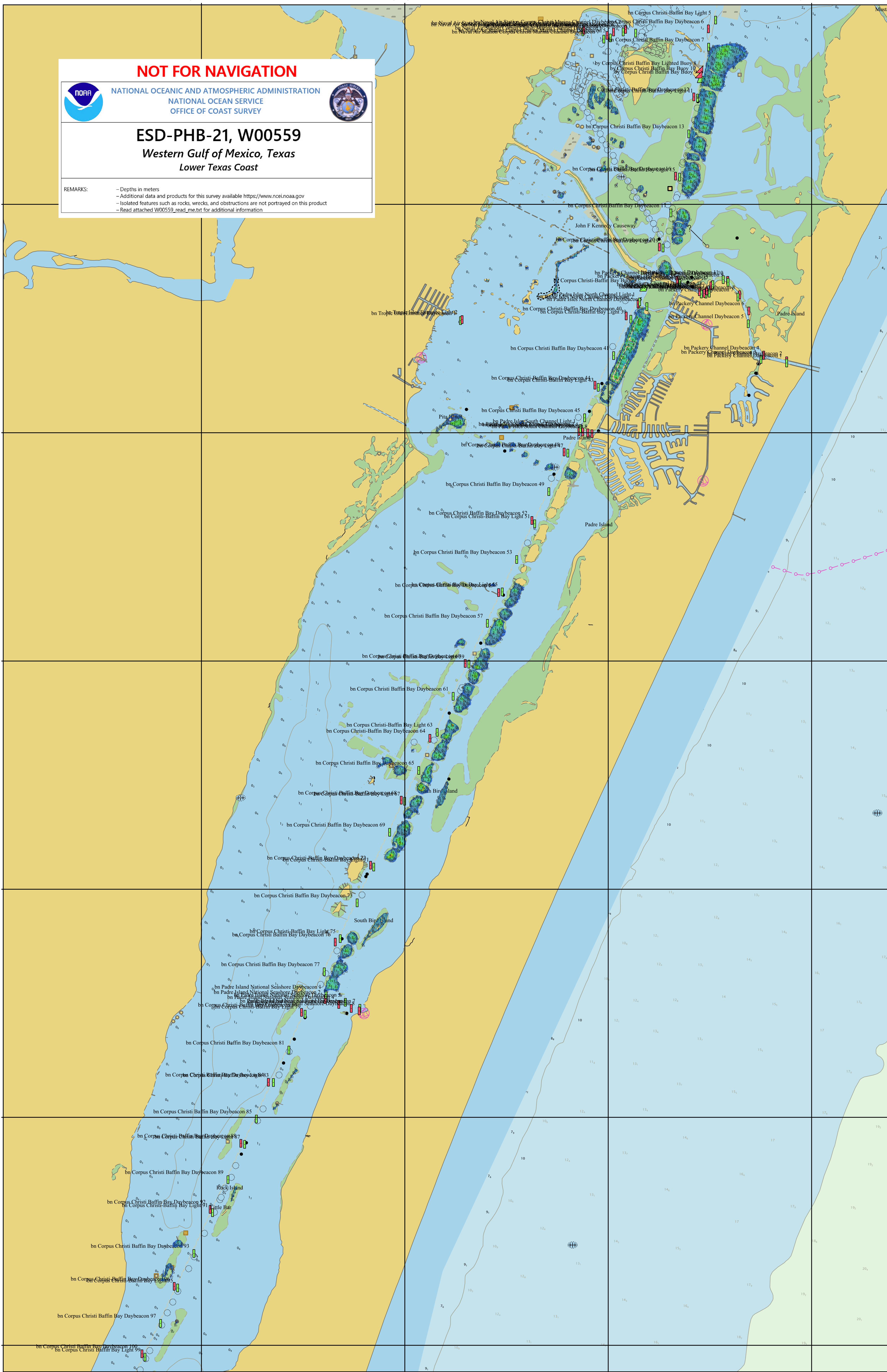
97°12'W

97°21'W

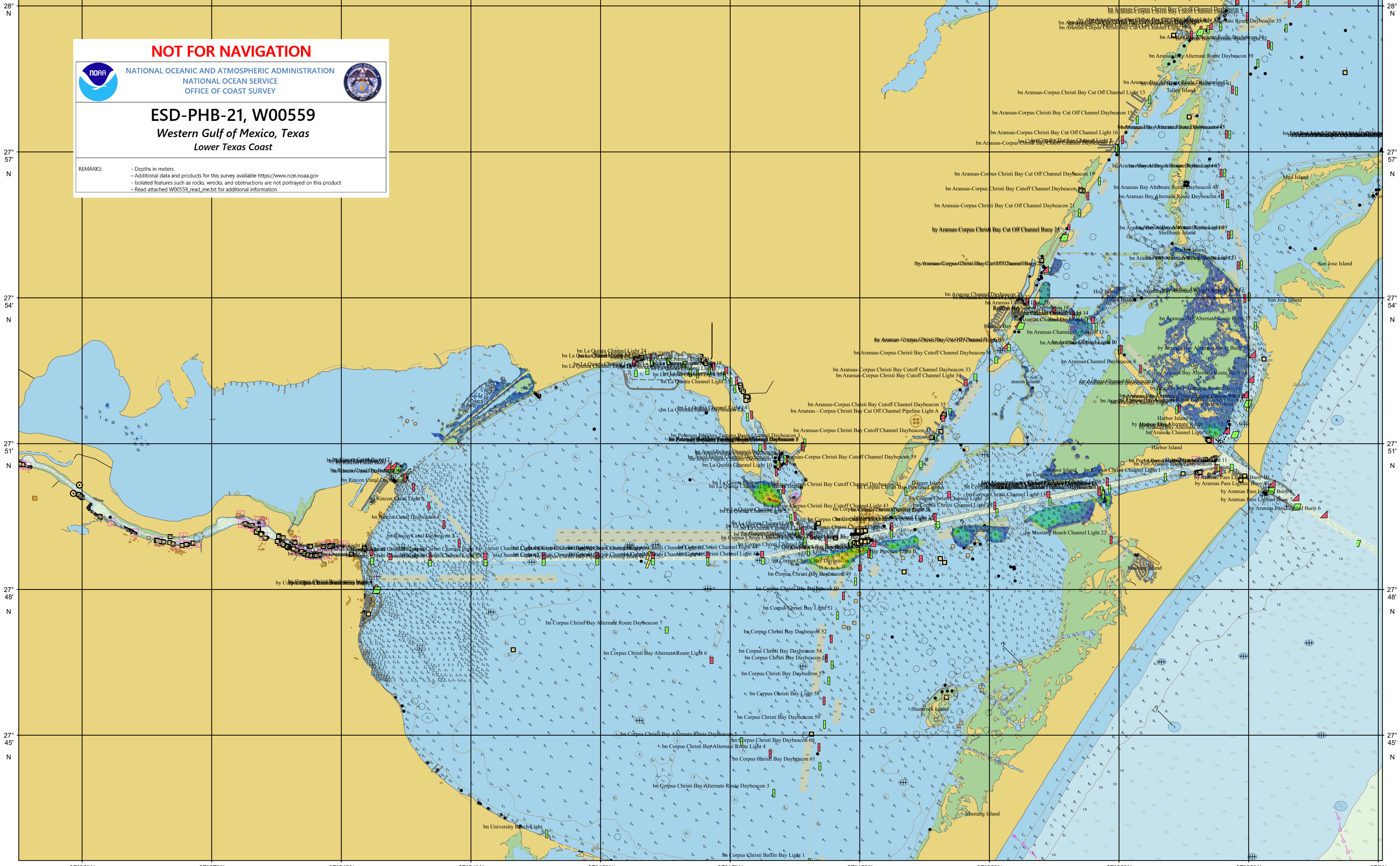
97°18'W

97°15'W

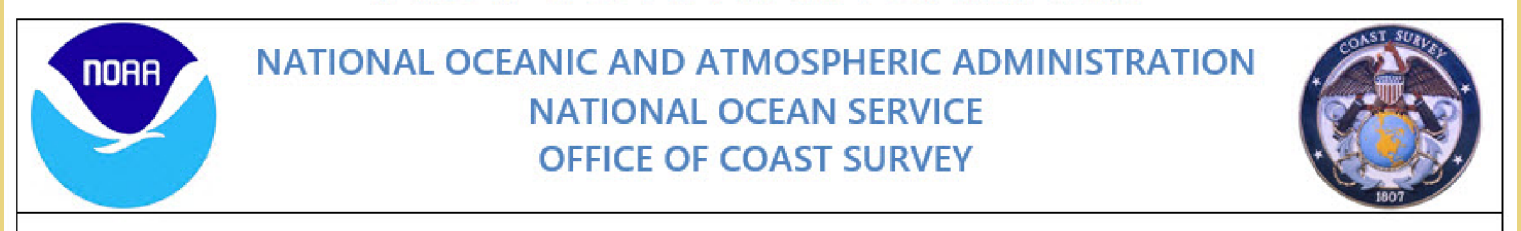
97°12'W



97°30'W 97°27'W 97°24'W 97°21'W 97°18'W 97°15'W 97°12'W 97°09'W 97°06'W 97°03'W 97°W



**NOT FOR NAVIGATION**



**ESD-PHB-21, W00559**  
*Western Gulf of Mexico, Texas*  
*Lower Texas Coast*

REMARKS:  
- Depths in meters  
- Additional data and products for this survey available <https://www.ncei.noaa.gov>  
- Isolated features such as rocks, wrecks, and obstructions are not portrayed on this product  
- Read attached W00559\_read\_me.txt for additional information

28° N  
27° 57' N  
27° 54' N  
27° 51' N  
27° 48' N  
27° 45' N

28° N  
27° 57' N  
27° 54' N  
27° 51' N  
27° 48' N  
27° 45' N

97°30'W 97°27'W 97°24'W 97°21'W 97°18'W 97°15'W 97°12'W 97°09'W 97°06'W 97°03'W 97°W

97°09'W

97°06'W

97°03'W

97°W

96°57'W

96°54'W

96°51'W

96°48'W

**NOT FOR NAVIGATION**



NATIONAL OCEANIC AND ATMOSPHERIC ADMINISTRATION  
NATIONAL OCEAN SERVICE  
OFFICE OF COAST SURVEY



**ESD-PHB-21, W00559**

*Western Gulf of Mexico, Texas  
Lower Texas Coast*

REMARKS:  
- Depths in meters  
- Additional data and products for this survey available <https://www.ncei.noaa.gov>  
- Isolated features such as rocks, wrecks, and obstructions are not portrayed on this product  
- Read attached W00559\_read\_me.txt for additional information

28° 12' N

28° 09' N

28° 06' N

28° 03' N

28° N

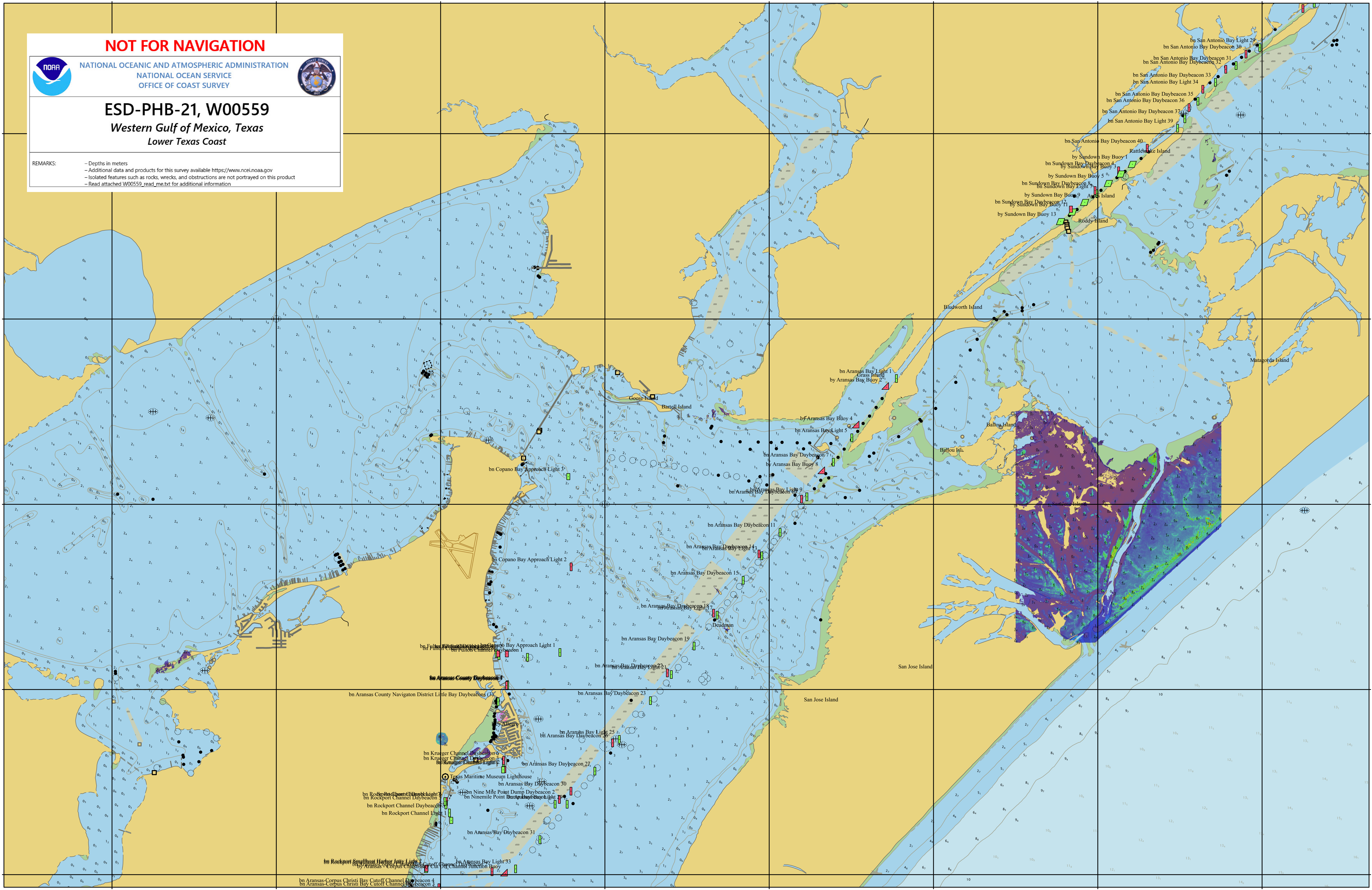
28° 12' N

28° 09' N

28° 06' N

28° 03' N

28° N



97°09'W

97°06'W

97°03'W

97°W

96°57'W

96°54'W

96°51'W

96°48'W

96°45'W

96°42'W

96°39'W

96°36'W

96°33'W

96°30'W

96°27'W

28° 39' N

28° 39' N

28° 36' N

28° 36' N

28° 33' N

28° 33' N

28° 30' N

28° 30' N

28° 27' N

28° 27' N

28° 24' N

28° 24' N

28° 21' N

28° 21' N

28° 18' N

28° 18' N

28° 15' N

28° 15' N

96°45'W

96°42'W

96°39'W

96°36'W

96°33'W

96°30'W

96°27'W

**NOT FOR NAVIGATION**



NATIONAL OCEANIC AND ATMOSPHERIC ADMINISTRATION  
NATIONAL OCEAN SERVICE  
OFFICE OF COAST SURVEY



**ESD-PHB-21, W00559**  
*Western Gulf of Mexico, Texas*  
*Lower Texas Coast*

REMARKS:  
- Depths in meters  
- Additional data and products for this survey available <https://www.ncei.noaa.gov>  
- Isolated features such as rocks, wrecks, and obstructions are not portrayed on this product  
- Read attached W00559\_read\_me.txt for additional information

