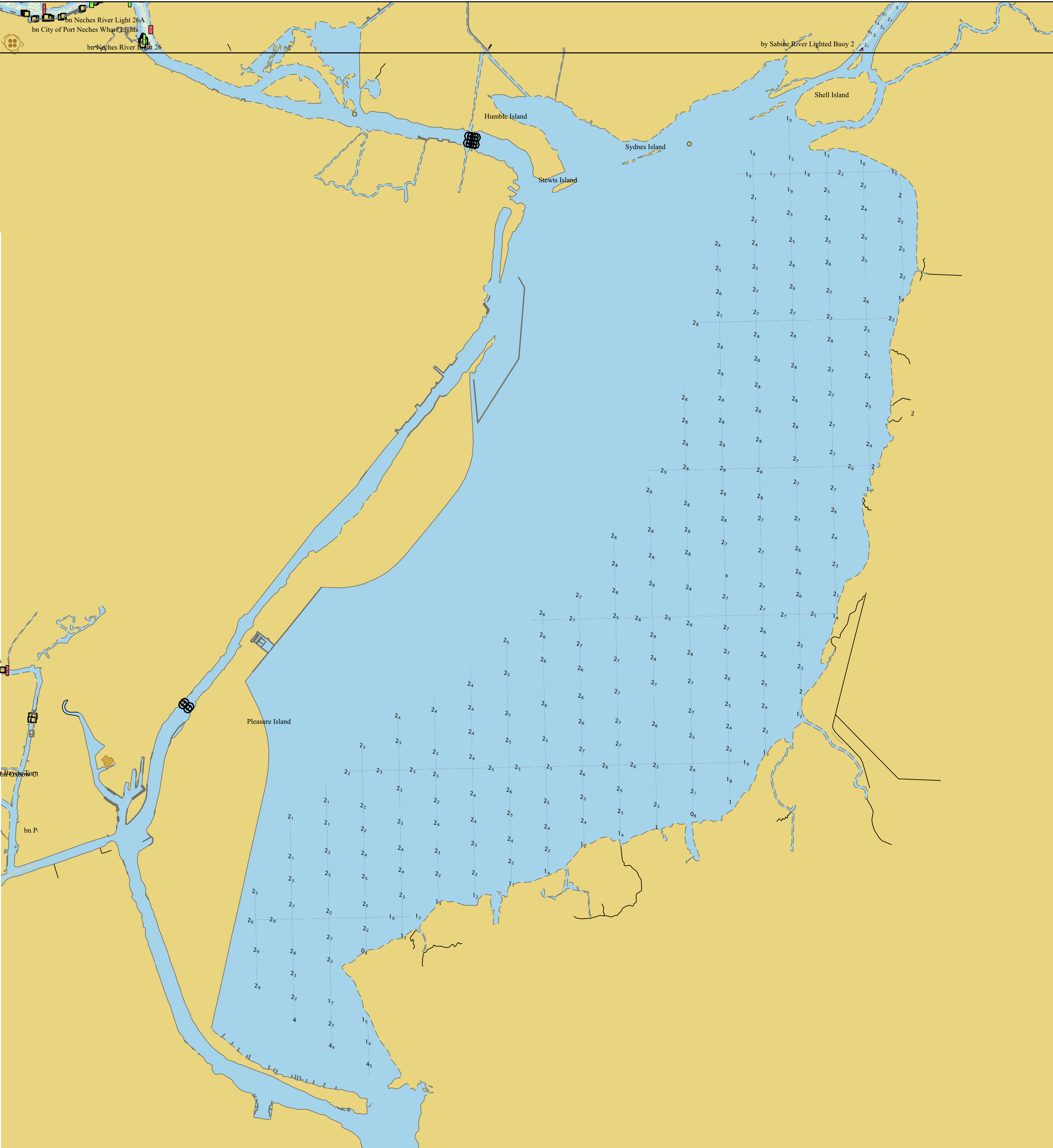


94°W

93°40'W

30° N

30° N



NOT FOR NAVIGATION



NATIONAL OCEANIC AND ATMOSPHERIC ADMINISTRATION
NATIONAL OCEAN SERVICE
OFFICE OF COAST SURVEY



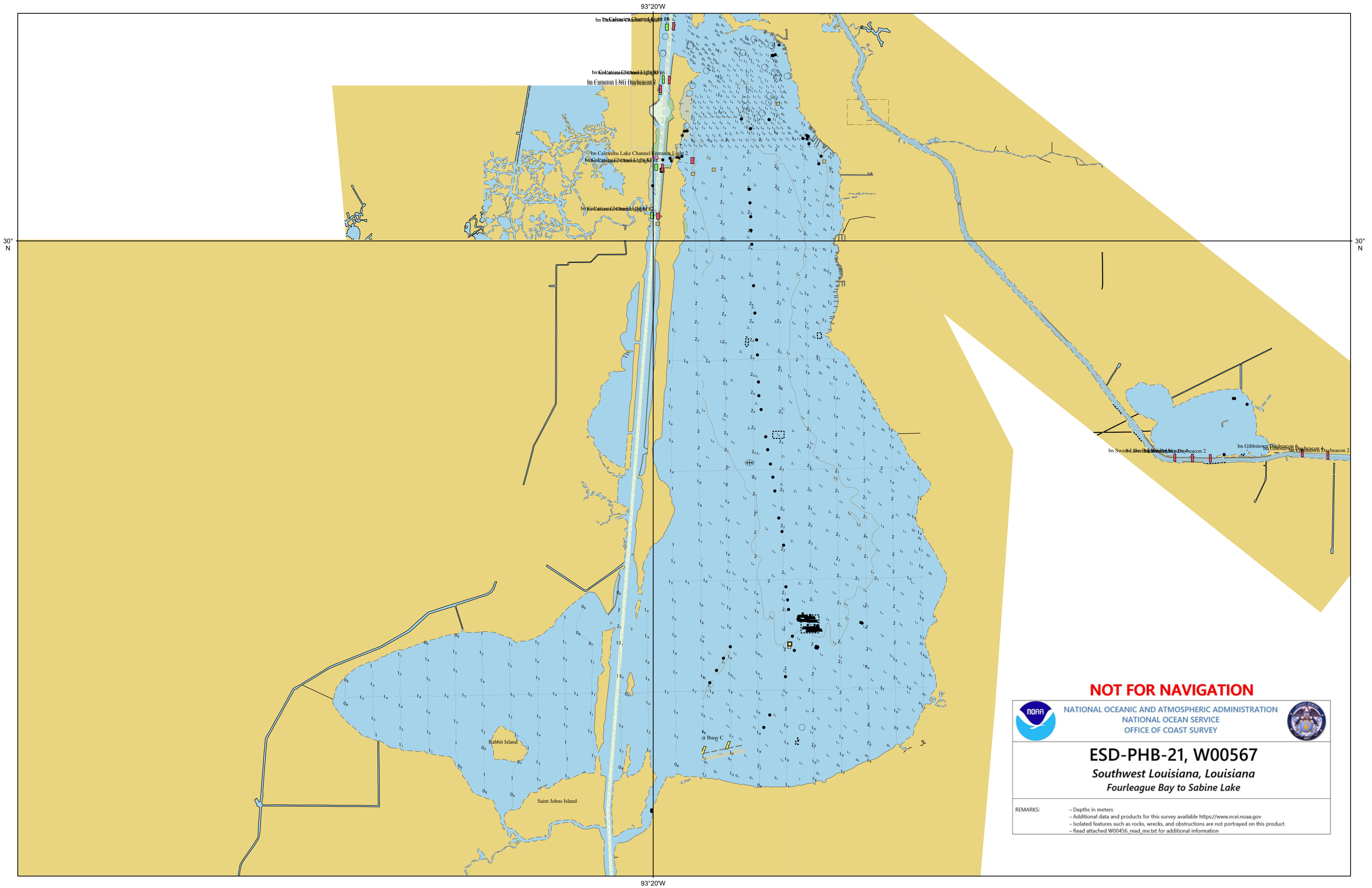
ESD-PHB-21, W00567

Southwest Louisiana, Louisiana
Fourleague Bay to Sabine Lake

REMARKS:
- Depths in meters
- Additional data and products for this survey available <https://www.ncei.noaa.gov>
- Isolated features such as rocks, wrecks, and obstructions are not portrayed on this product
- Read attached W00456_read_me.txt for additional information

94°W

93°40'W



NOT FOR NAVIGATION



NATIONAL OCEANIC AND ATMOSPHERIC ADMINISTRATION
NATIONAL OCEAN SERVICE
OFFICE OF COAST SURVEY



ESD-PHB-21, W00567
Southwest Louisiana, Louisiana
Fourleague Bay to Sabine Lake

REMARKS: - Depths in meters
- Additional data and products for this survey available <https://www.ncei.noaa.gov>
- Isolated features such as rocks, wrecks, and obstructions are not portrayed on this product
- Read attached W00456_read_me.txt for additional information

92°W

91°40'W

91°20'W

NOT FOR NAVIGATION



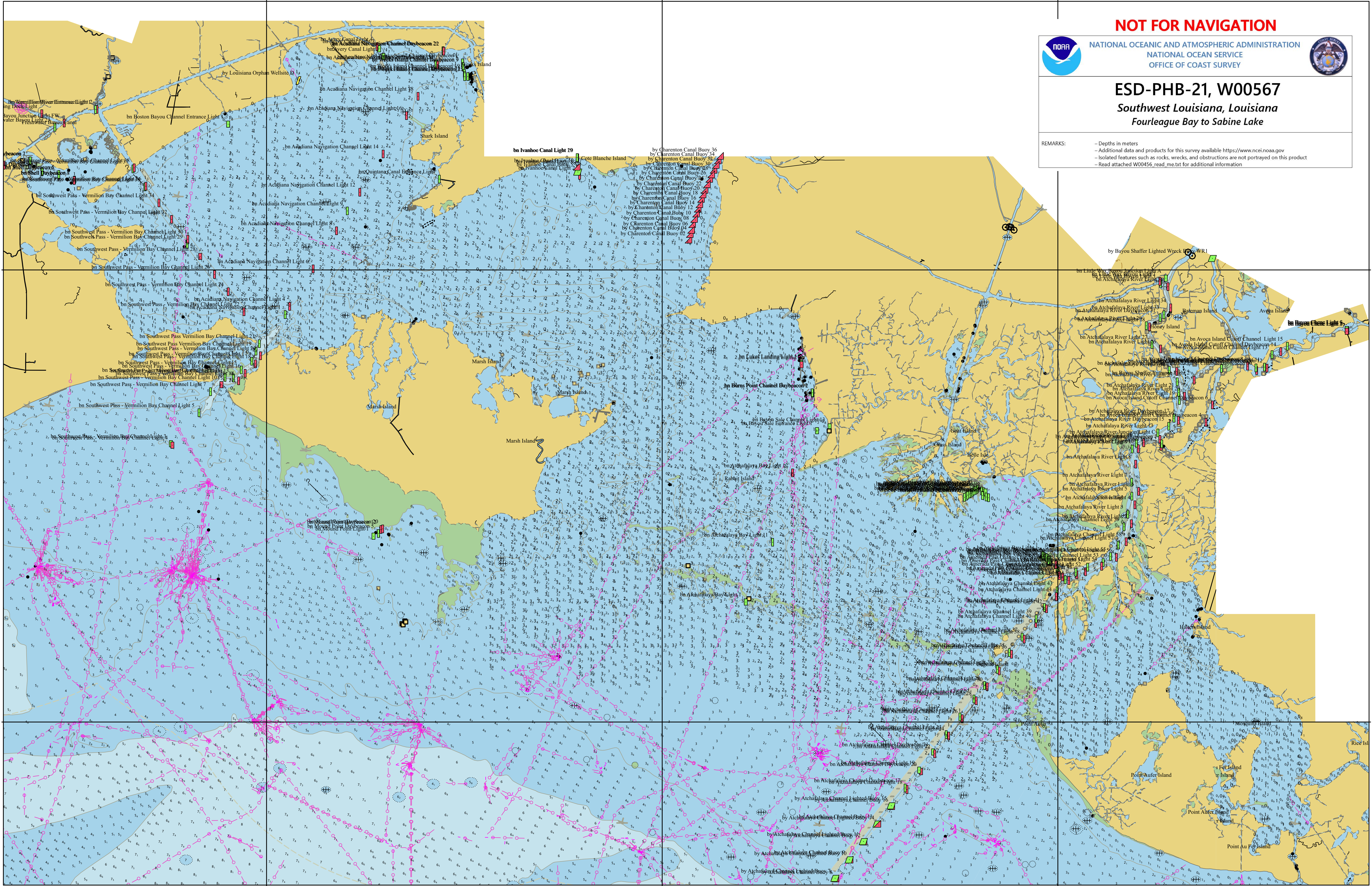
NATIONAL OCEANIC AND ATMOSPHERIC ADMINISTRATION
NATIONAL COAST SERVICE
OFFICE OF COAST SURVEY



ESD-PHB-21, W00567

Southwest Louisiana, Louisiana Fourleague Bay to Sabine Lake

REMARKS:
- Depths in meters
- Additional data and products for this survey available <https://www.ncei.noaa.gov>
- Isolated features such as rocks, wrecks, and obstructions are not portrayed on this product
- Read attached W00456_read_me.txt for additional information



92°W

91°40'W

91°20'W