



88°26'W 88°25'W 88°24'W 88°23'W 88°22'W 88°21'W 88°20'W 88°19'W 88°18'W 88°17'W 88°16'W

30° 25' N
30° 24' N
30° 23' N
30° 22' N
30° 21' N
30° 20' N

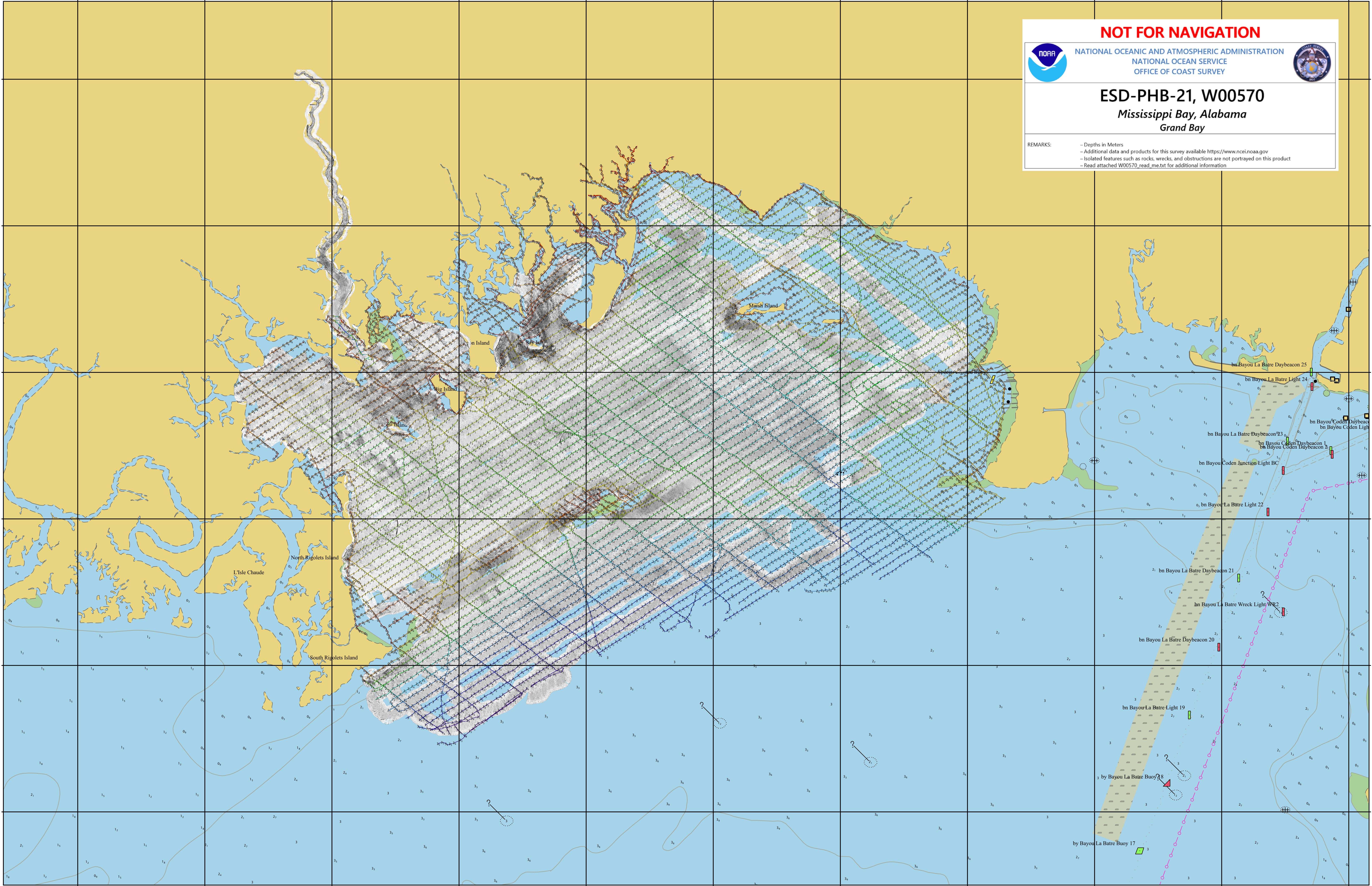
30° 25' N
30° 24' N
30° 23' N
30° 22' N
30° 21' N
30° 20' N

NOT FOR NAVIGATION

 NATIONAL OCEANIC AND ATMOSPHERIC ADMINISTRATION
NATIONAL OCEAN SERVICE
OFFICE OF COAST SURVEY 

ESD-PHB-21, W00570
Mississippi Bay, Alabama
Grand Bay

REMARKS:
- Depths in Meters
- Additional data and products for this survey available <https://www.ncei.noaa.gov>
- Isolated features such as rocks, wrecks, and obstructions are not portrayed on this product
- Read attached W00570_read_me.txt for additional information



88°26'W 88°25'W 88°24'W 88°23'W 88°22'W 88°21'W 88°20'W 88°19'W 88°18'W 88°17'W 88°16'W