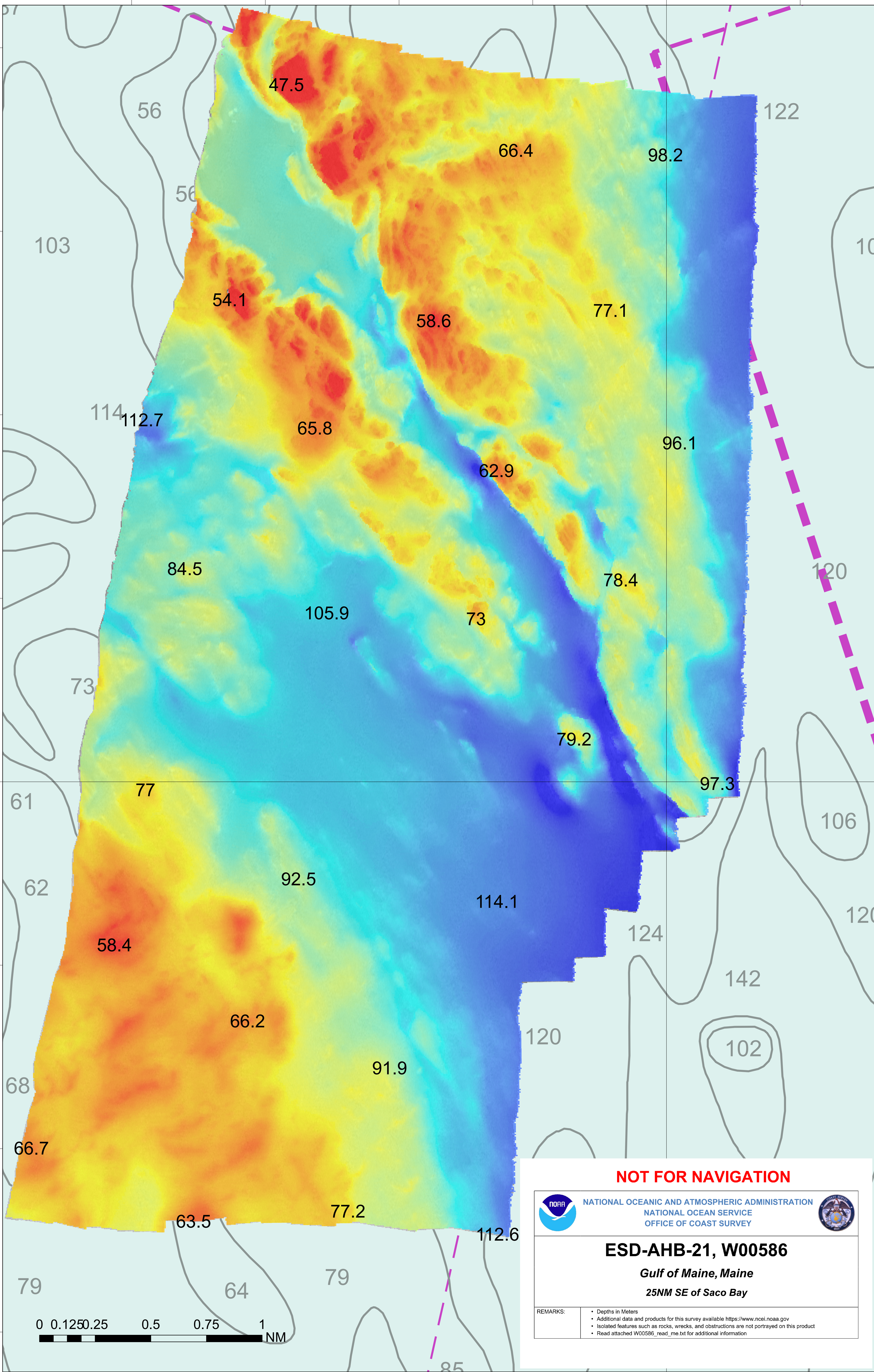


70°6'0"W



43°24'0"N

43°24'0"N

70°6'0"W

NOT FOR NAVIGATION



NATIONAL OCEANIC AND ATMOSPHERIC ADMINISTRATION
NATIONAL OCEAN SERVICE
OFFICE OF COAST SURVEY



ESD-AHB-21, W00586

Gulf of Maine, Maine
25NM SE of Saco Bay

REMARKS:

- Depths in Meters
- Additional data and products for this survey available <https://www.ncei.noaa.gov>
- Isolated features such as rocks, wrecks, and obstructions are not portrayed on this product
- Read attached W00586_read_me.txt for additional information

