

4.2 Vertical Datum and Water Level Corrections

The vertical datum for these data is mean lower-low water (MLLW) level in meters. A tidal zoning file (.zdf; provided by NOAA CO-OPS) containing time and range corrections for verified data referenced from the Wells, ME (8419317) tide gauge was applied to all areas surveyed (Figure 11). Time corrections, tide height offsets, and tide scale (range) for each zone are listed in Table 10.

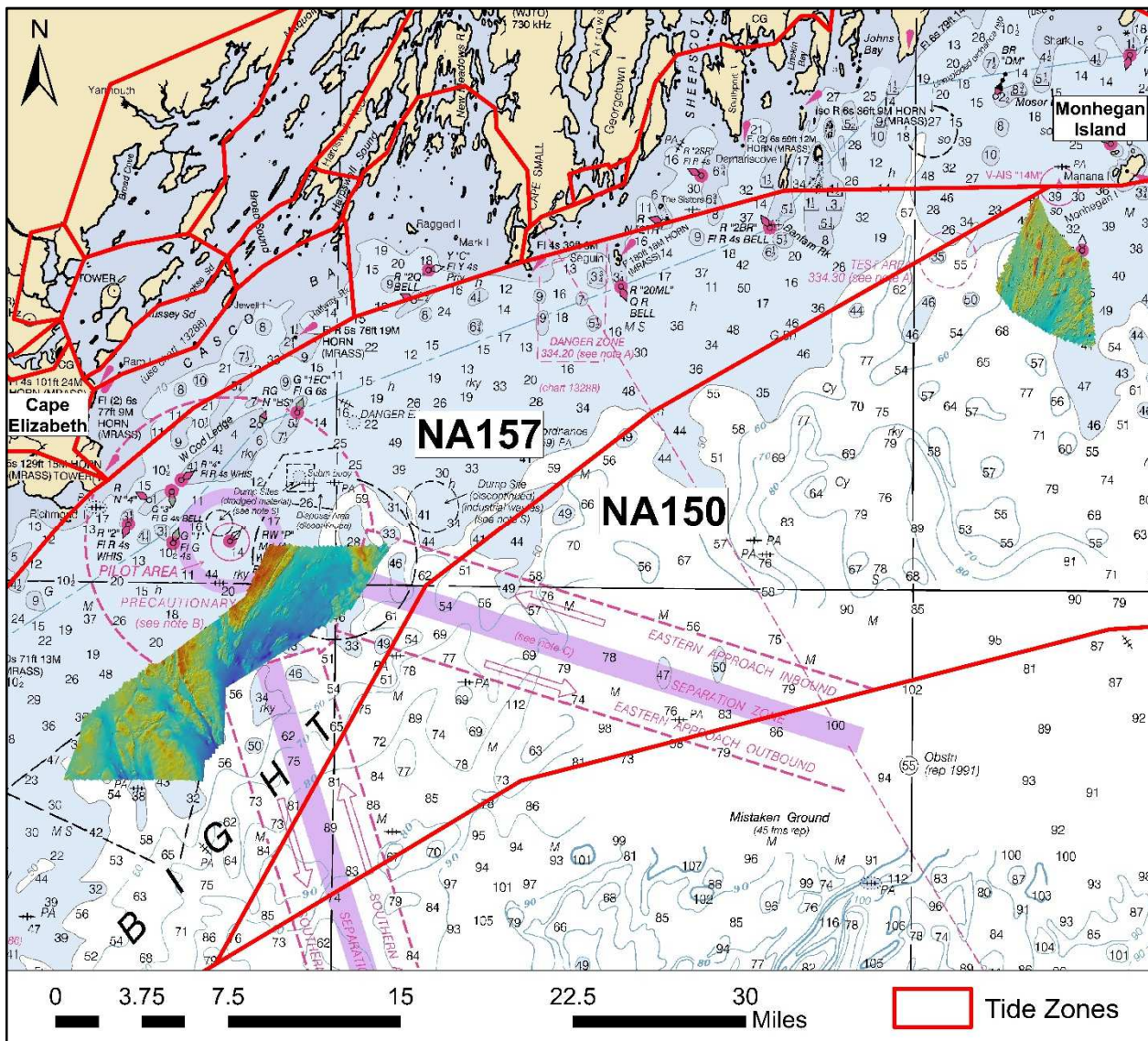


Figure 11 – Tide zones (outlined in red) relative to 2018-2019 mainscheme survey extent. Map scale 1:75,000.