

70°00'W

69°57'0"W

69°54'0"W

69°51'0"W

43°36'0"N

43°36'0"N

43°33'0"N

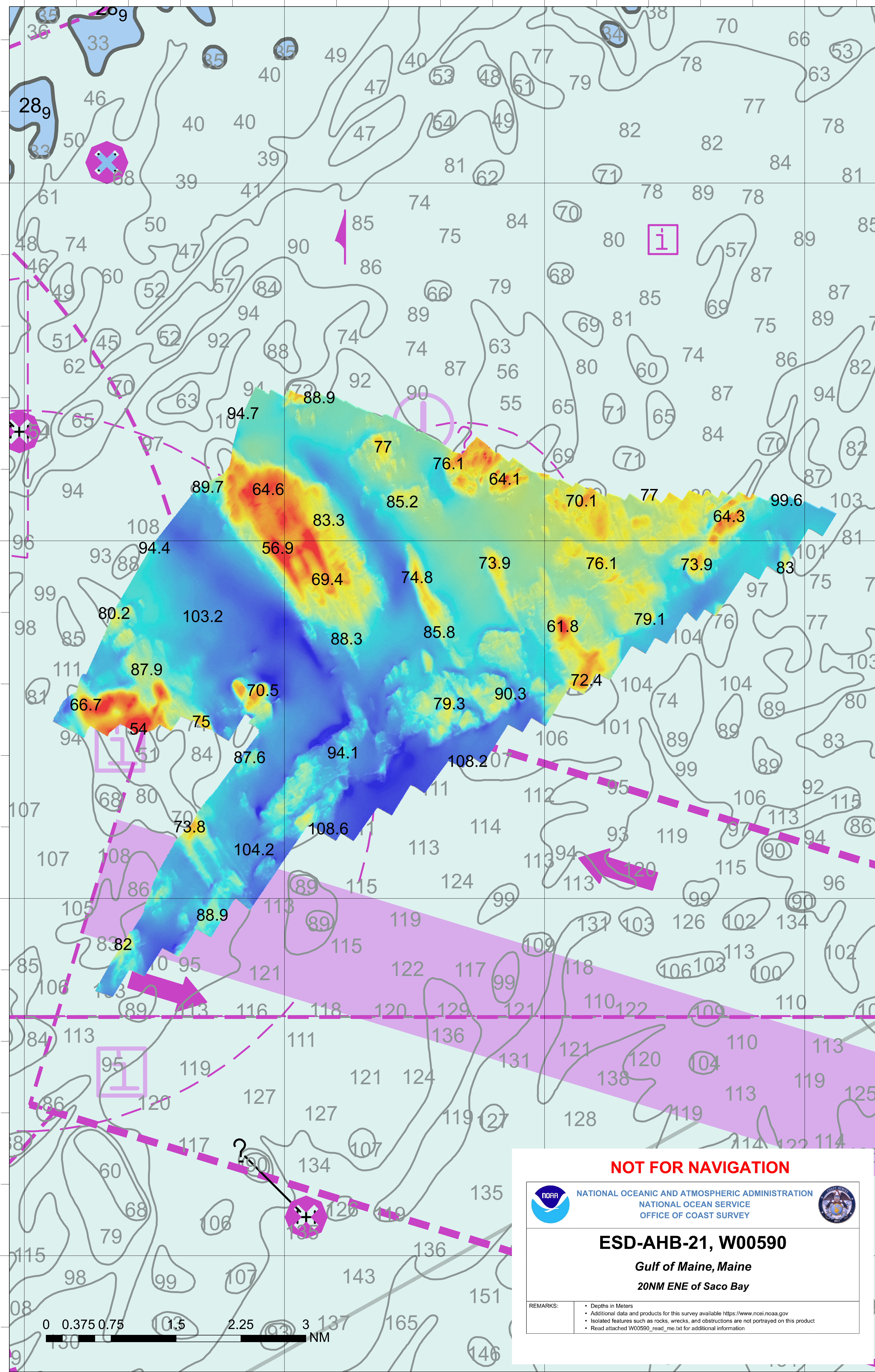
43°33'0"N

43°30'0"N

43°30'0"N

43°27'0"N

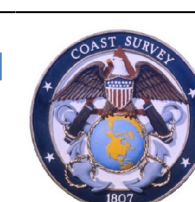
43°27'0"N



NOT FOR NAVIGATION



NATIONAL OCEANIC AND ATMOSPHERIC ADMINISTRATION
NATIONAL OCEAN SERVICE
OFFICE OF COAST SURVEY



ESD-AHB-21, W00590

Gulf of Maine, Maine

20NM ENE of Saco Bay

REMARKS:

- Depths in Meters
- Additional data and products for this survey available <https://www.ncei.noaa.gov>
- Isolated features such as rocks, wrecks, and obstructions are not portrayed on this product
- Read attached W00590_read_me.txt for additional information

0 0.375 0.75 1.5 2.25 3 137 165 NM

70°00'W

69°57'0"W

69°54'0"W

69°51'0"W