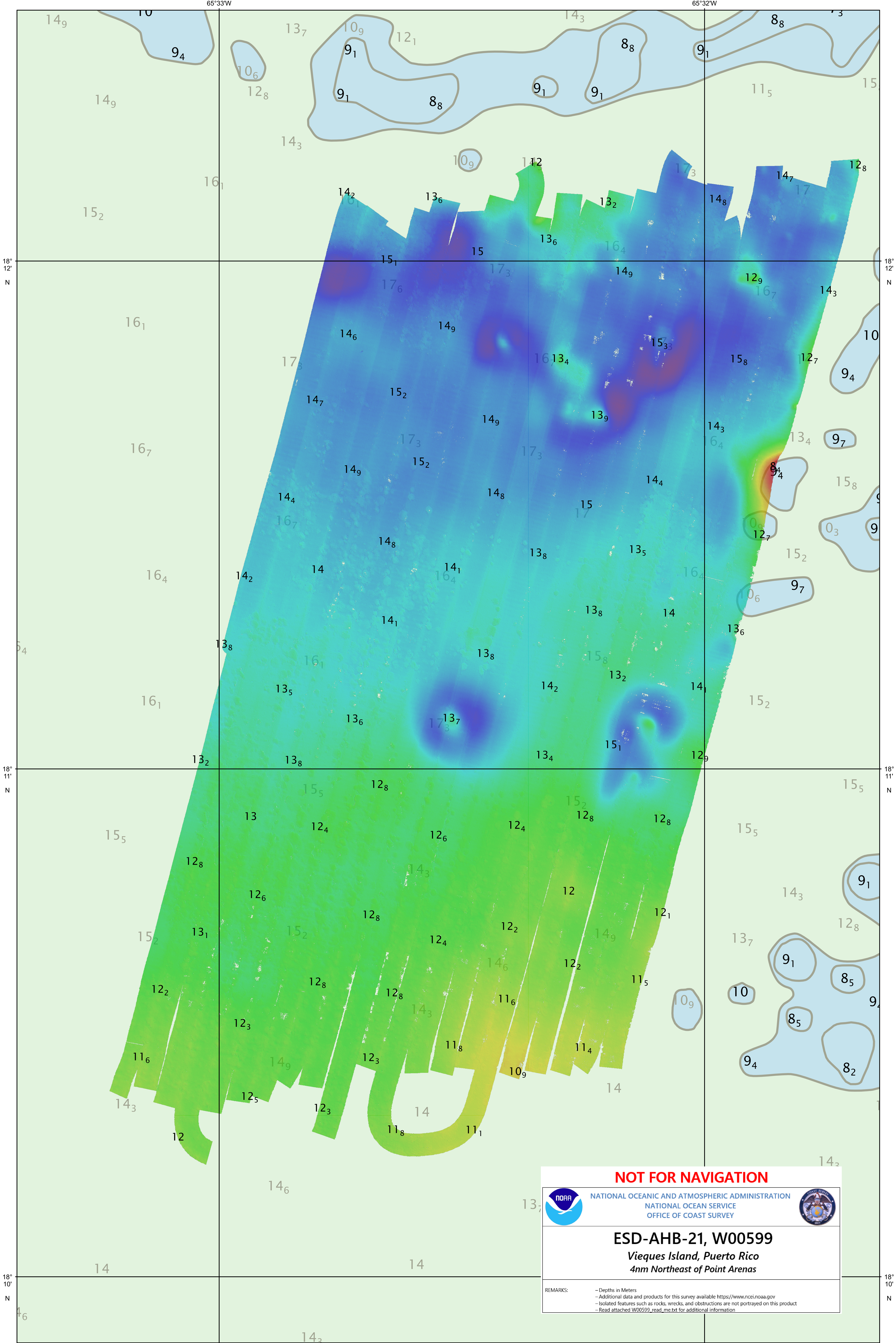


65°33'W

65°32'W



18° 12' N

18° 12' N

18° 11' N

18° 11' N

18° 10' N

18° 10' N

65°33'W

65°32'W

NOT FOR NAVIGATION



NATIONAL OCEANIC AND ATMOSPHERIC ADMINISTRATION
NATIONAL OCEAN SERVICE
OFFICE OF COAST SURVEY



ESD-AHB-21, W00599

*Vieques Island, Puerto Rico
4nm Northeast of Point Arenas*

REMARKS:

- Depths in Meters
- Additional data and products for this survey available <https://www.ncei.noaa.gov>
- Isolated features such as rocks, wrecks, and obstructions are not portrayed on this product
- Read attached W00599_read_me.txt for additional information