

80°04'W

80°03'W

25° 46' N

25° 46' N

25° 45' N

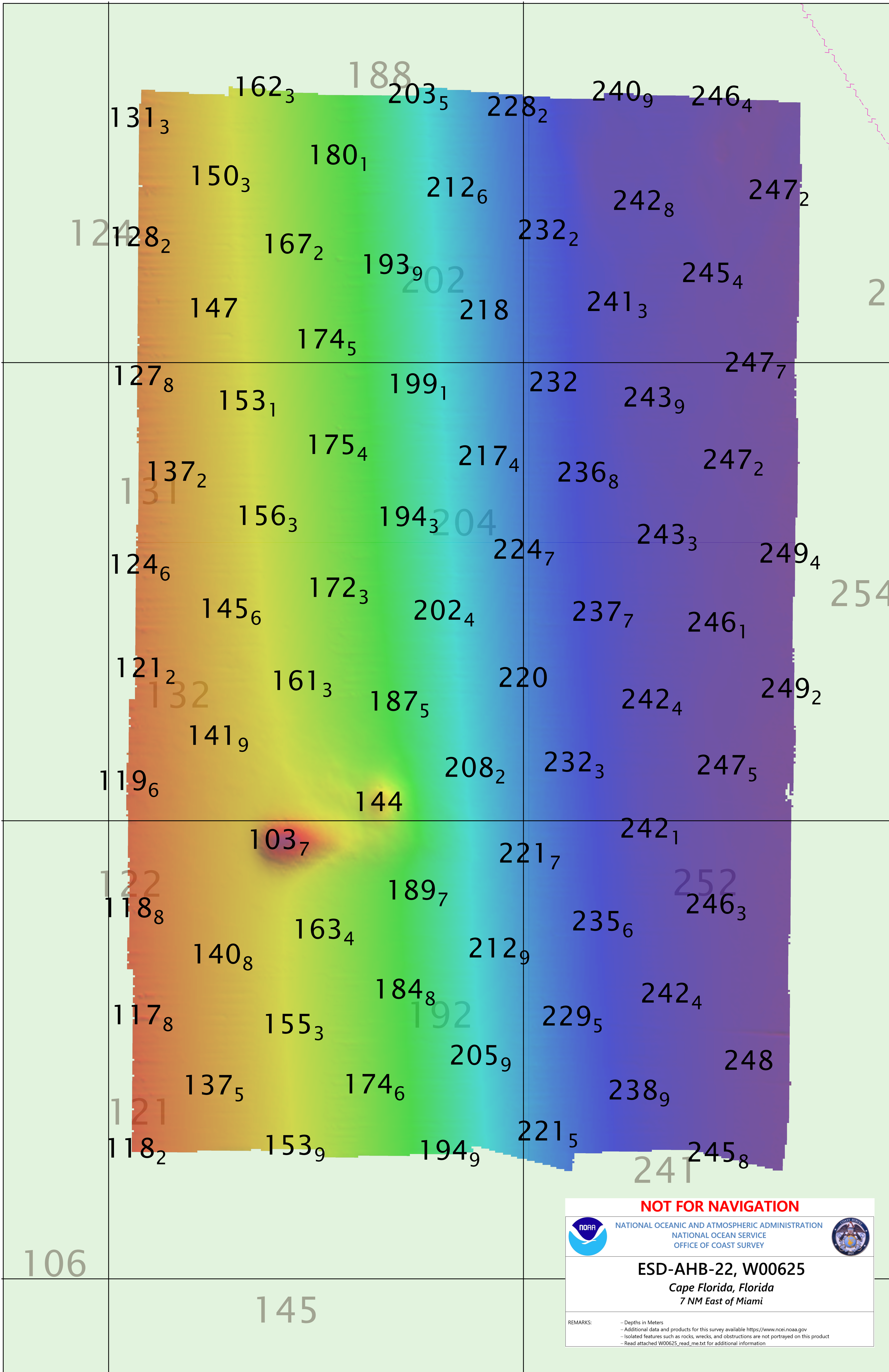
25° 45' N

25° 44' N


25° 44' N

80°04'W


80°03'W



NOT FOR NAVIGATION



NATIONAL OCEANIC AND ATMOSPHERIC ADMINISTRATION
NATIONAL OCEAN SERVICE
OFFICE OF COAST SURVEY



ESD-AHB-22, W00625
Cape Florida, Florida
7 NM East of Miami

REMARKS: - Depths in Meters
- Additional data and products for this survey available <https://www.ncei.noaa.gov>
- Isolated features such as rocks, wrecks, and obstructions are not portrayed on this product
- Read attached W00625_read_me.txt for additional information