

82°20'0"W

82°15'0"W

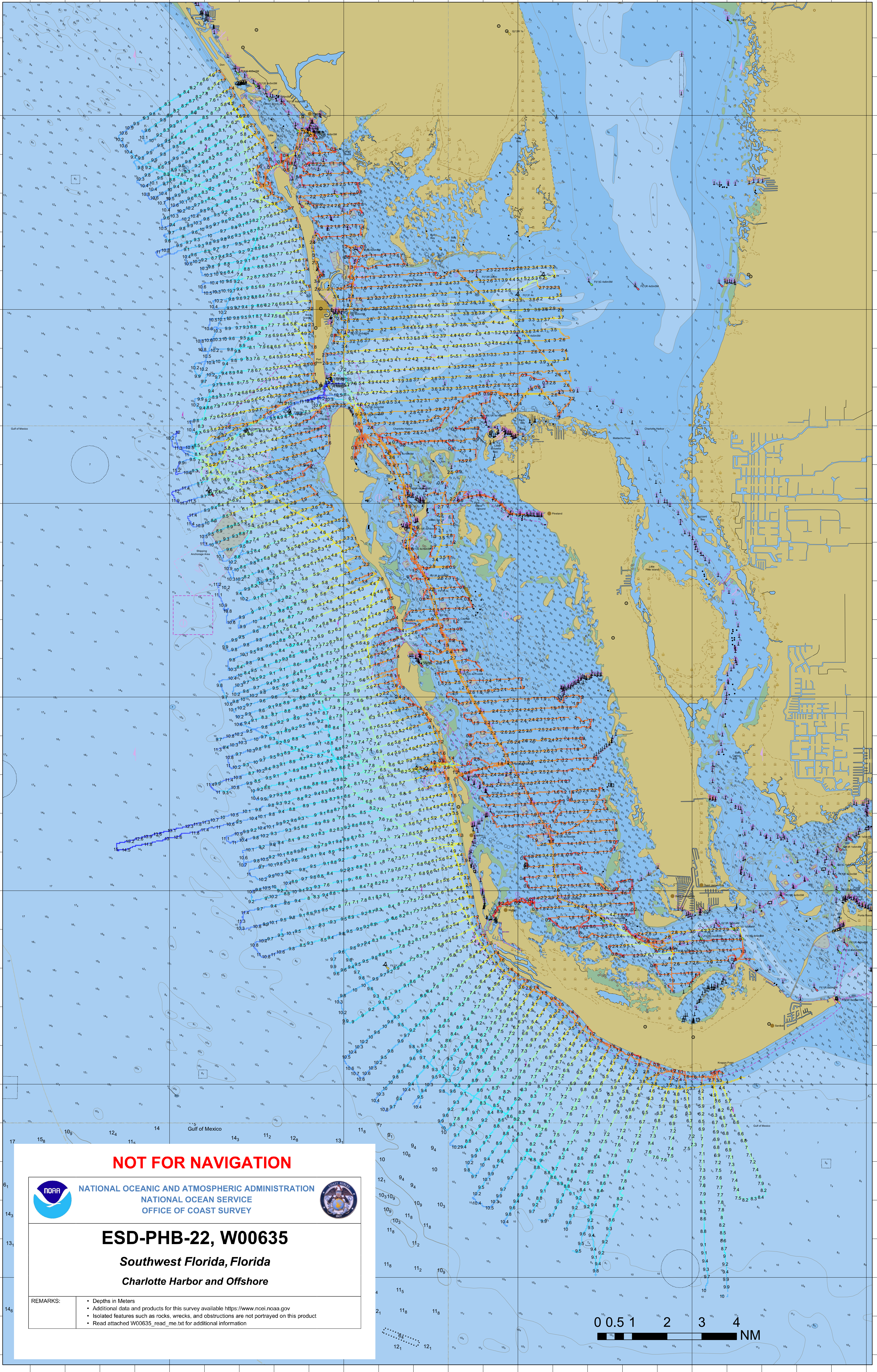
82°10'0"W

82°5'0"W

82°0'0"W

26°50'0"N  
26°45'0"N  
26°40'0"N  
26°35'0"N  
26°30'0"N  
26°25'0"N  
26°20'0"N

26°50'0"N  
26°45'0"N  
26°40'0"N  
26°35'0"N  
26°30'0"N  
26°25'0"N  
26°20'0"N



**NOT FOR NAVIGATION**



NATIONAL OCEANIC AND ATMOSPHERIC ADMINISTRATION  
NATIONAL OCEAN SERVICE  
OFFICE OF COAST SURVEY



**ESD-PHB-22, W00635**

*Southwest Florida, Florida*  
*Charlotte Harbor and Offshore*

REMARKS:

- Depths in Meters
- Additional data and products for this survey available <https://www.ncei.noaa.gov>
- Isolated features such as rocks, wrecks, and obstructions are not portrayed on this product
- Read attached W00635\_read\_mx.txd for additional information

0 0.5 1 2 3 4  
NM

82°20'0"W

82°15'0"W

82°10'0"W

82°5'0"W

82°0'0"W