

82°48'0"W 82°45'0"W 82°42'0"W 82°39'0"W 82°36'0"W 82°33'0"W 82°30'0"W 82°27'0"W 82°24'0"W

28°3'0"N
28°0'0"N
27°57'0"N
27°54'0"N
27°51'0"N
27°48'0"N
27°45'0"N
27°42'0"N
27°39'0"N
27°36'0"N
27°33'0"N
27°30'0"N

28°3'0"N
28°0'0"N
27°57'0"N
27°54'0"N
27°51'0"N
27°48'0"N
27°45'0"N
27°42'0"N
27°39'0"N
27°36'0"N
27°33'0"N
27°30'0"N

NOT FOR NAVIGATION



NATIONAL OCEANIC AND ATMOSPHERIC ADMINISTRATION
NATIONAL OCEAN SERVICE
OFFICE OF COAST SURVEY

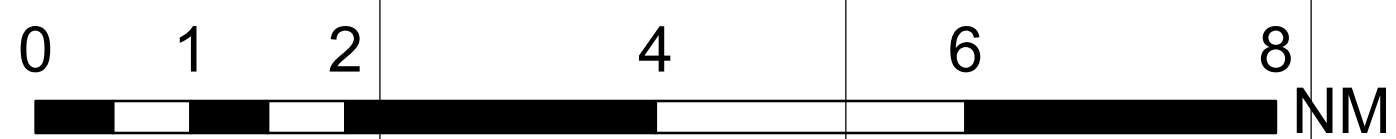
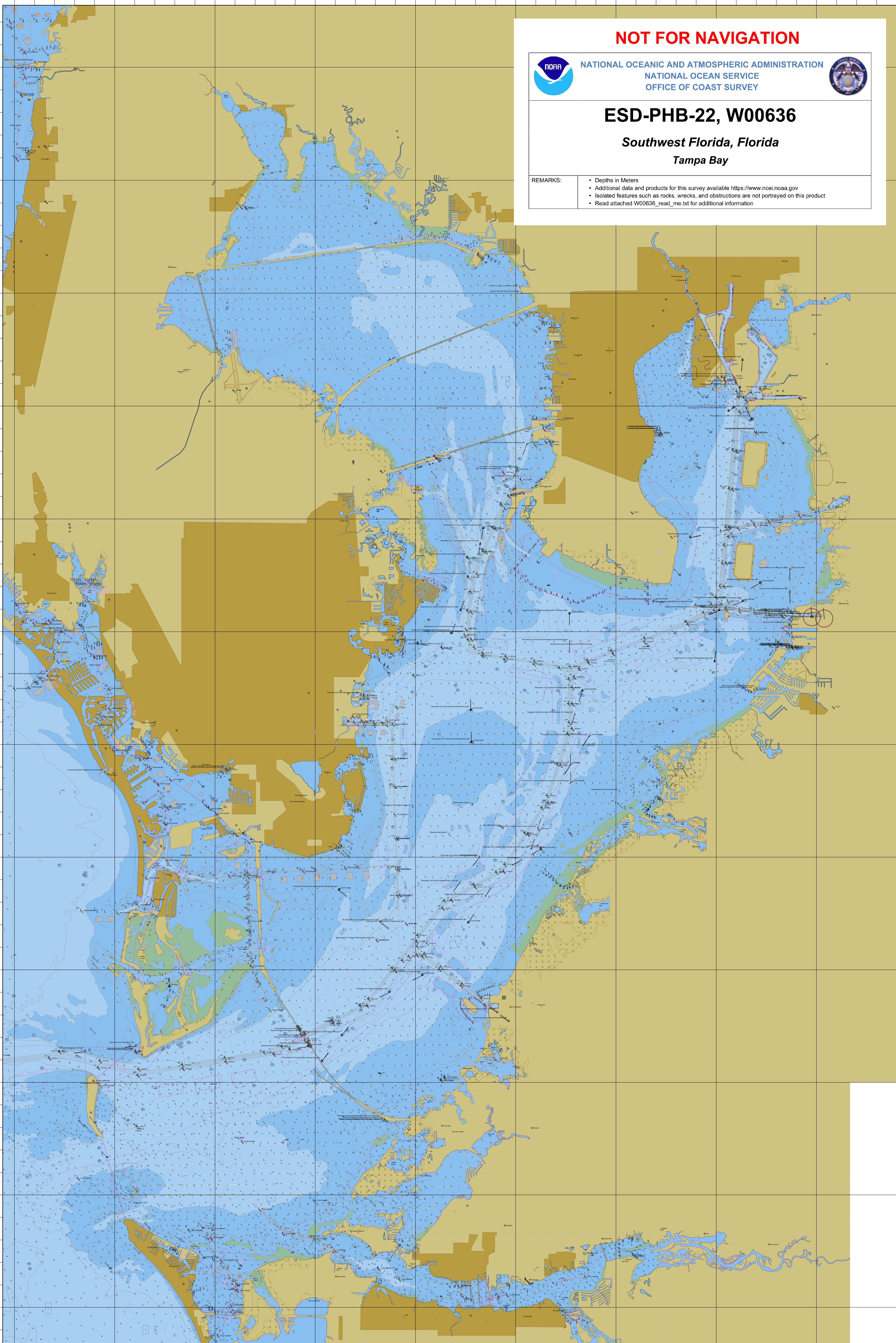


ESD-PHB-22, W00636

Southwest Florida, Florida
Tampa Bay

REMARKS:

- Depths in Meters
- Additional data and products for this survey available <https://www.ncei.noaa.gov>
- Isolated features such as rocks, wrecks, and obstructions are not portrayed on this product
- Read attached W00636_read_me.txt for additional information



82°48'0"W 82°45'0"W 82°42'0"W 82°39'0"W 82°36'0"W 82°33'0"W 82°30'0"W 82°27'0"W 82°24'0"W