

**NOT FOR NAVIGATION**



NATIONAL OCEANIC AND ATMOSPHERIC ADMINISTRATION  
NATIONAL OCEAN SERVICE  
OFFICE OF COAST SURVEY

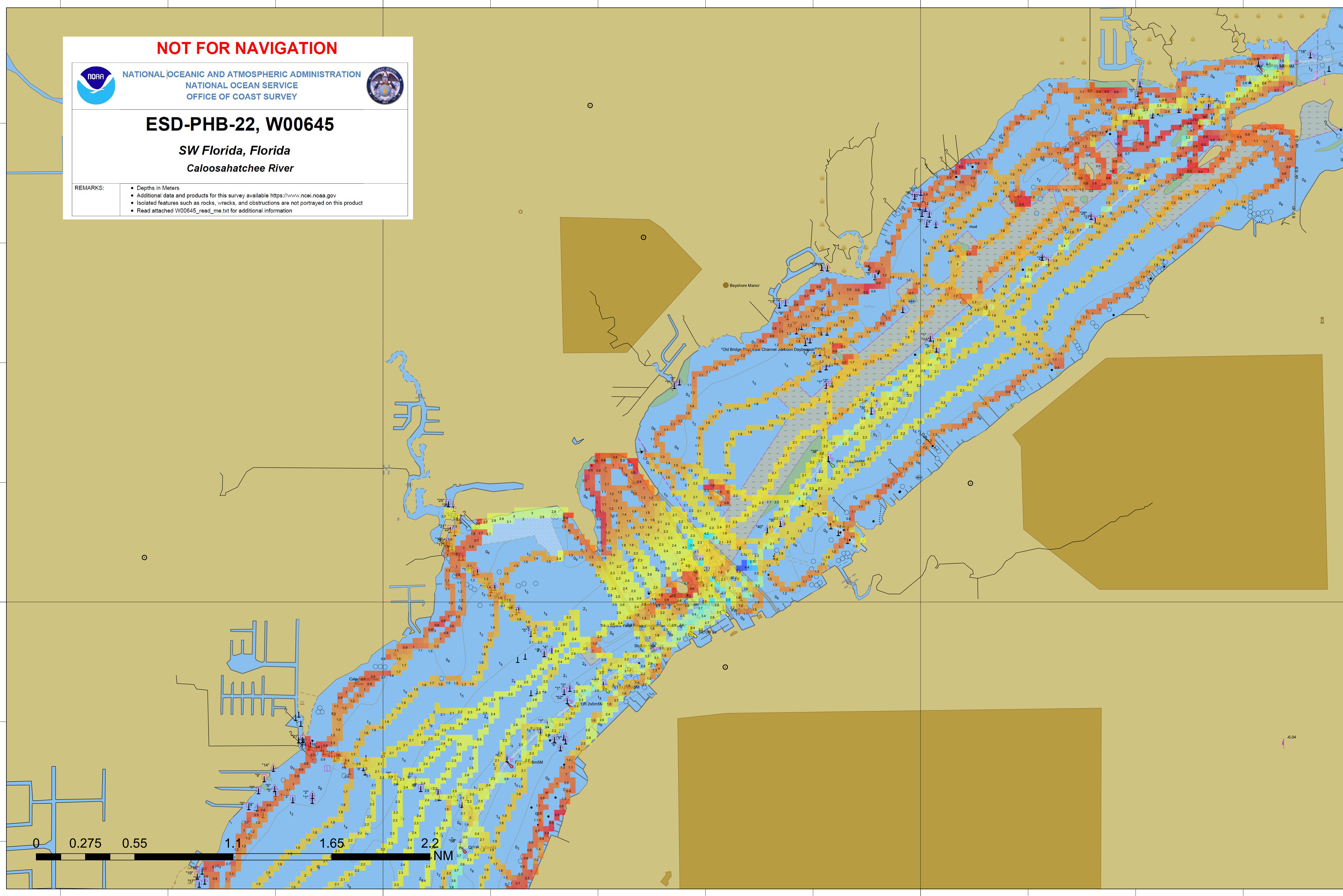


**ESD-PHB-22, W00645**

*SW Florida, Florida*  
*Caloosahatchee River*

REMARKS:

- Depths in Meters
- Additional data and products for this survey available <https://www.ncei.noaa.gov>
- Isolated features such as rocks, wrecks, and obstructions are not portrayed on this product
- Read attached W00645\_read\_me.txt for additional information



81°54'0"W

81°51'0"W

26°39'0"N

26°39'0"N

**NOT FOR NAVIGATION**



NATIONAL OCEANIC AND ATMOSPHERIC ADMINISTRATION  
NATIONAL OCEAN SERVICE  
OFFICE OF COAST SURVEY

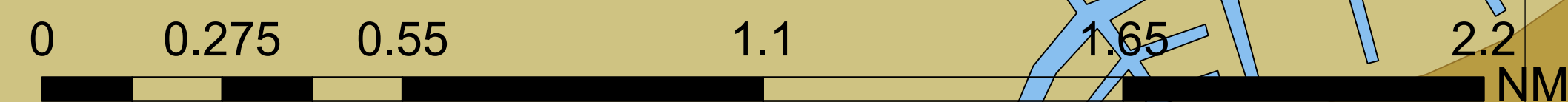
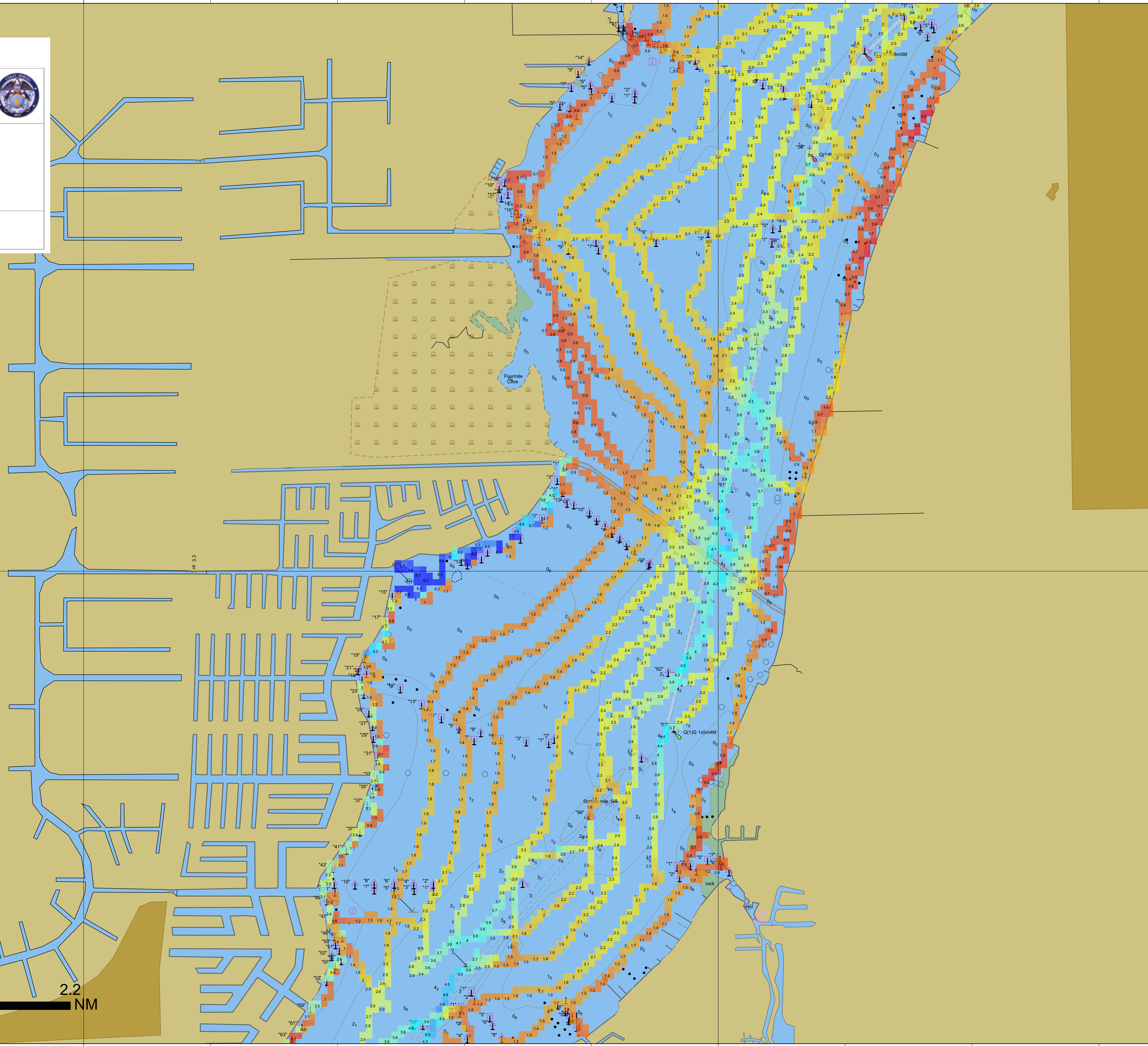


**ESD-PHB-22, W00645**

*SW Florida, Florida*  
*Caloosahatchee River*

REMARKS:

- Depths in Meters
- Additional data and products for this survey available <https://www.ncei.noaa.gov>
- Isolated features such as rocks, wrecks, and obstructions are not portrayed on this product
- Read attached W00645\_read\_me.txt for additional information



81°57'0"W

81°54'0"W

26°36'0"N

26°36'0"N

**NOT FOR NAVIGATION**



NATIONAL OCEANIC AND ATMOSPHERIC ADMINISTRATION  
NATIONAL OCEAN SERVICE  
OFFICE OF COAST SURVEY



**ESD-PHB-22, W00645**

*SW Florida, Florida*  
*Caloosahatchee River*

REMARKS:

- Depths in Meters
- Additional data and products for this survey available <https://www.ncei.noaa.gov>
- Isolated features such as rocks, wrecks, and obstructions are not portrayed on this product
- Read attached W00645\_read\_me.txt for additional information

26°33'0"N

26°33'0"N

26°30'0"N

26°30'0"N

82°0'0"W

81°57'0"W

