

**NOT FOR NAVIGATION**



NATIONAL OCEANIC AND ATMOSPHERIC ADMINISTRATION  
NATIONAL OCEAN SERVICE  
OFFICE OF COAST SURVEY

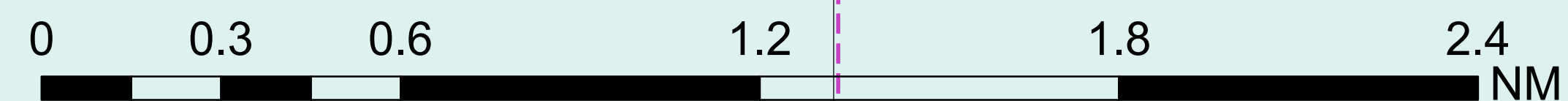
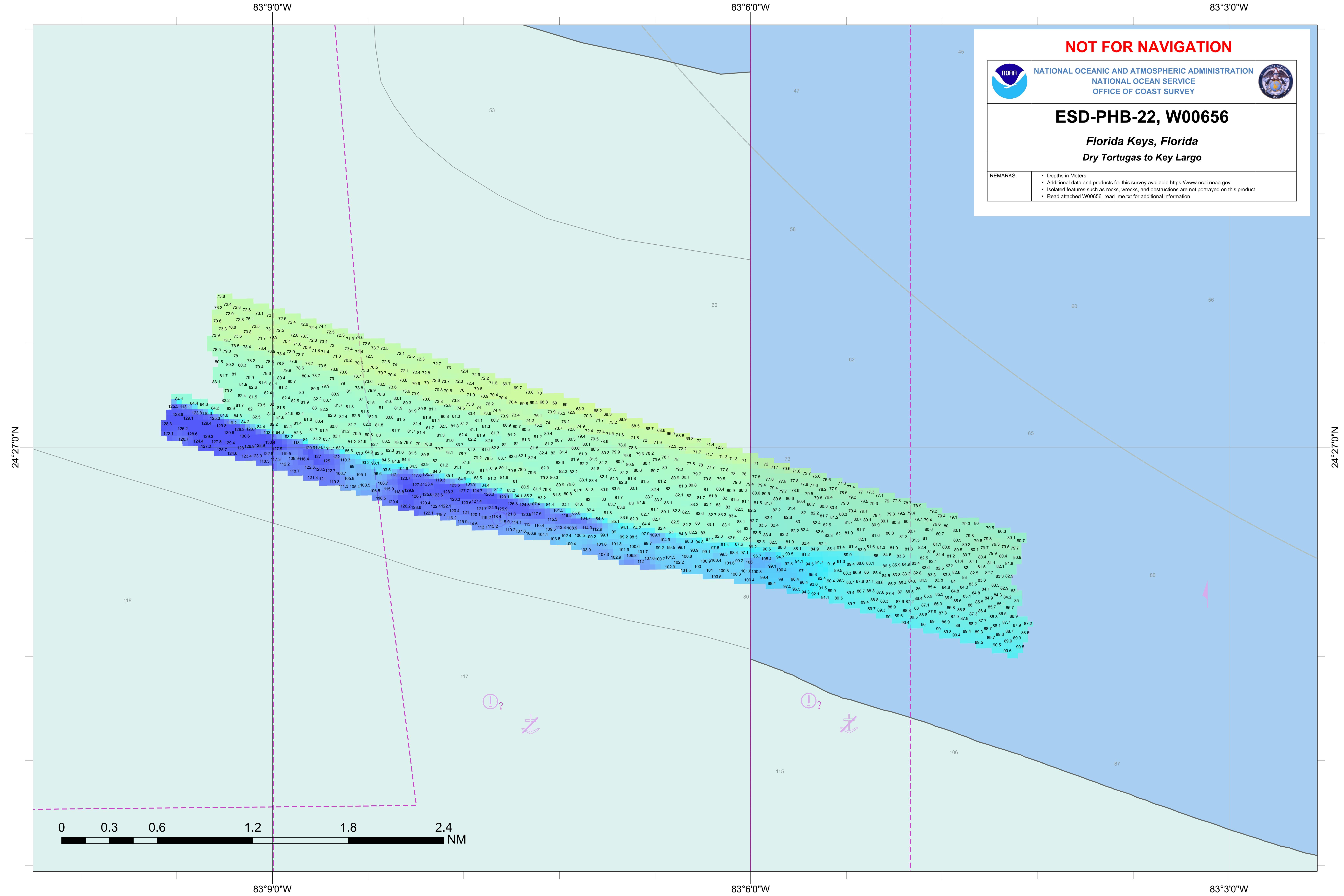


**ESD-PHB-22, W00656**

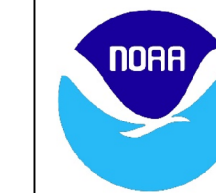
*Florida Keys, Florida*  
*Dry Tortugas to Key Largo*

REMARKS:

- Depths in Meters
- Additional data and products for this survey available <https://www.ncei.noaa.gov>
- Isolated features such as rocks, wrecks, and obstructions are not portrayed on this product
- Read attached W00656\_read\_me.txt for additional information



**NOT FOR NAVIGATION**



NATIONAL OCEANIC AND ATMOSPHERIC ADMINISTRATION  
NATIONAL OCEAN SERVICE  
OFFICE OF COAST SURVEY

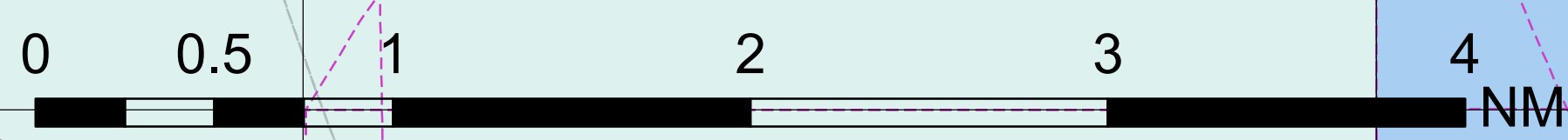
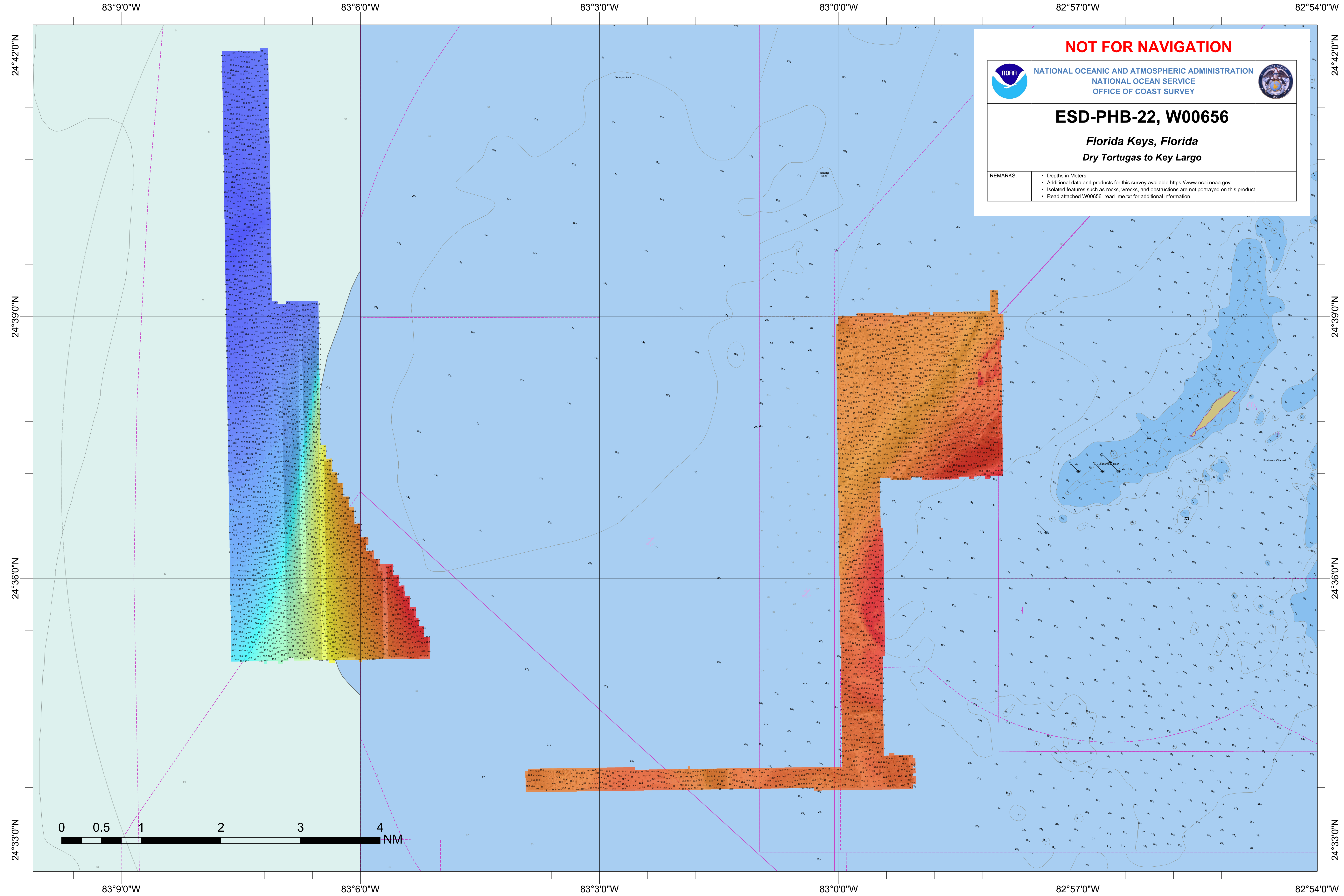


### ESD-PHB-22, W00656

*Florida Keys, Florida*  
*Dry Tortugas to Key Largo*

REMARKS:

- Depths in Meters
- Additional data and products for this survey available <https://www.ncei.noaa.gov>
- Isolated features such as rocks, wrecks, and obstructions are not portrayed on this product
- Read attached W00656\_read\_me.txt for additional information



83°90'W      83°60'W      83°30'W      83°00'W      82°57'0"W      82°54'0"W

24°42'0"N  
24°39'0"N  
24°36'0"N  
24°33'0"N

24°42'0"N  
24°39'0"N  
24°36'0"N  
24°33'0"N

**NOT FOR NAVIGATION**



NATIONAL OCEANIC AND ATMOSPHERIC ADMINISTRATION  
NATIONAL OCEAN SERVICE  
OFFICE OF COAST SURVEY

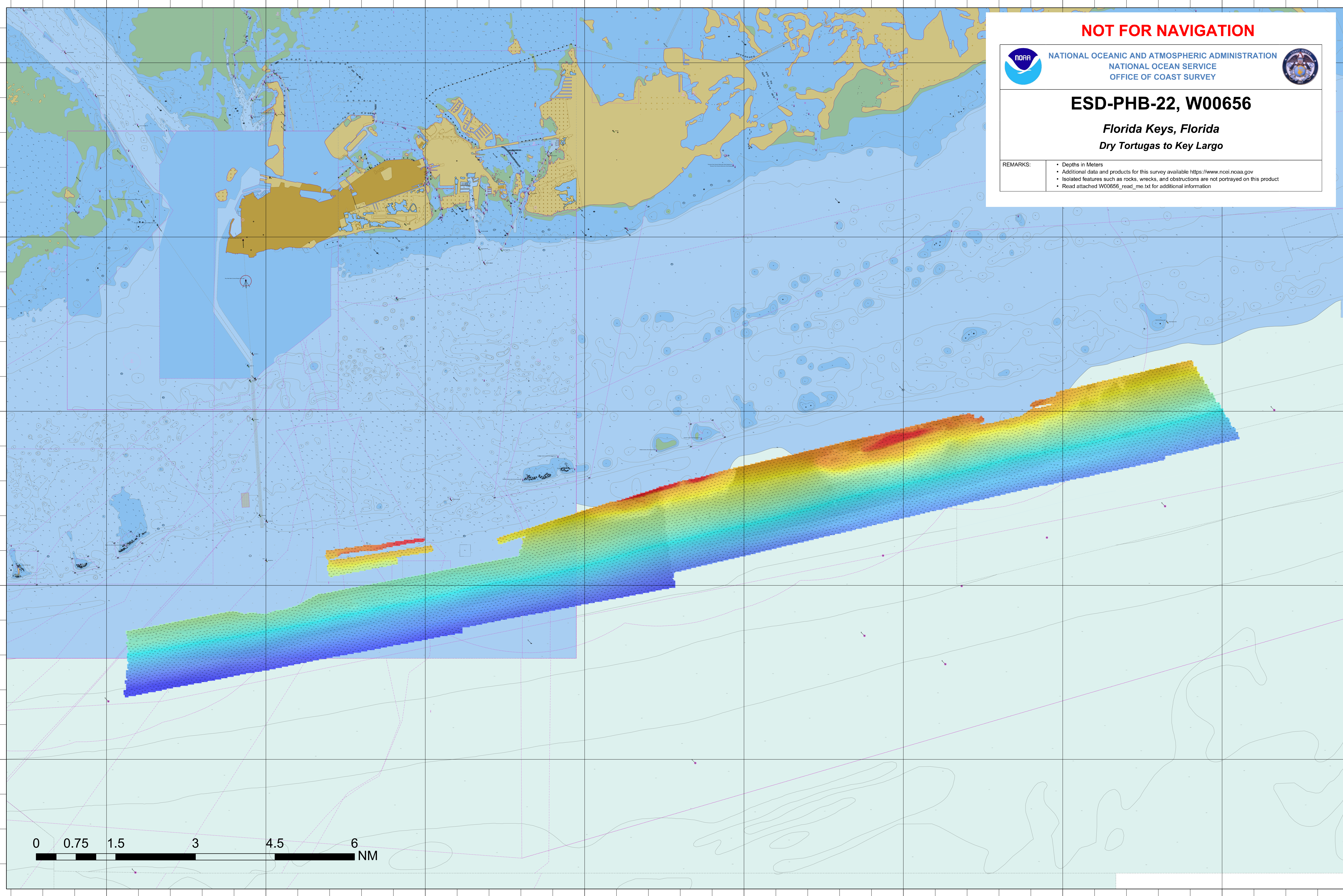
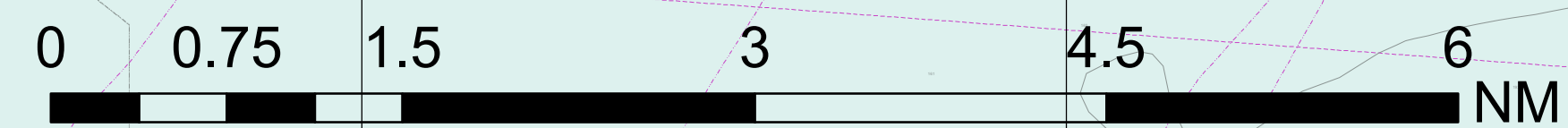


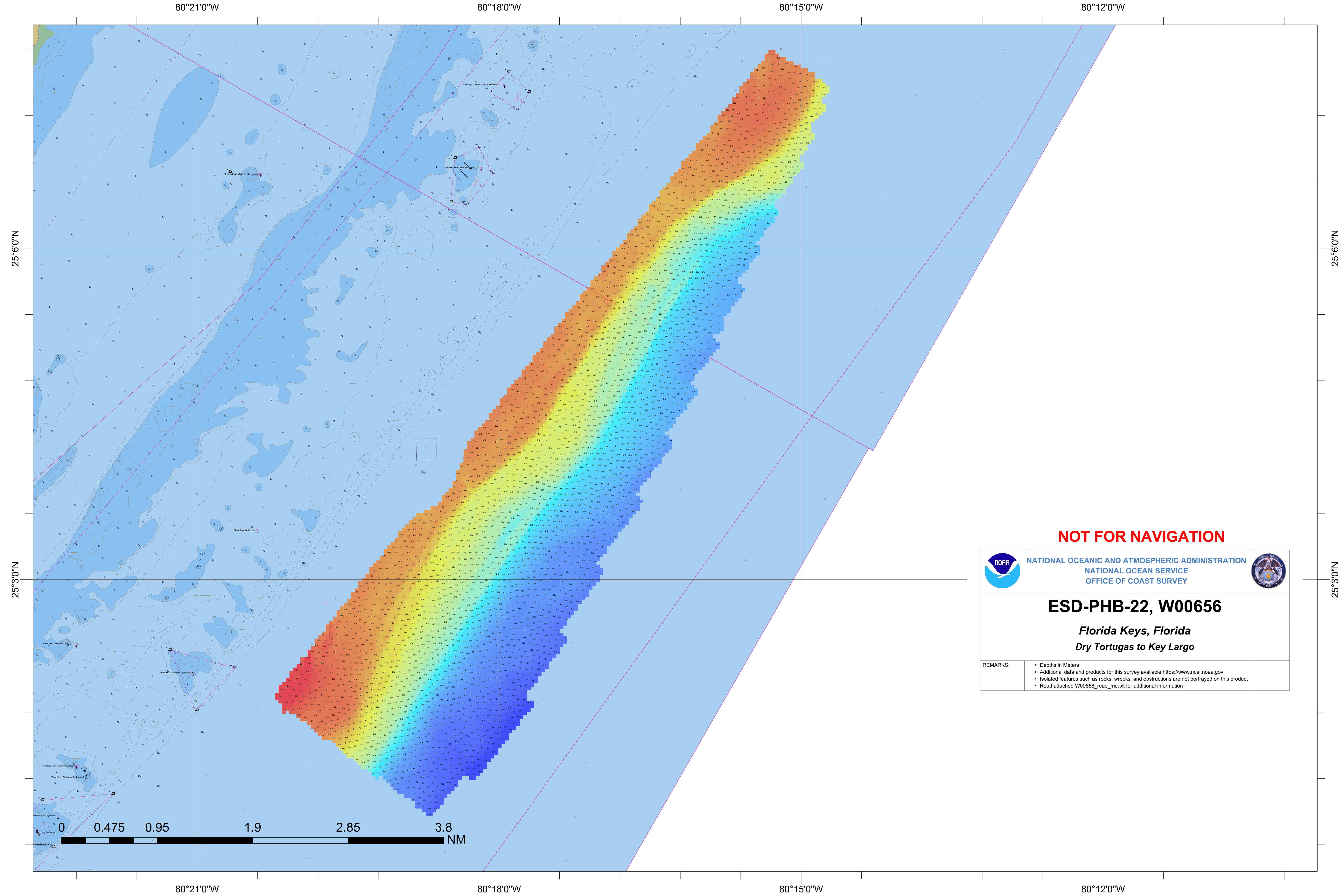
**ESD-PHB-22, W00656**

*Florida Keys, Florida*  
*Dry Tortugas to Key Largo*

REMARKS:

- Depths in Meters
- Additional data and products for this survey available <https://www.ncei.noaa.gov>
- Isolated features such as rocks, wrecks, and obstructions are not portrayed on this product
- Read attached W00656\_read\_me.txt for additional information

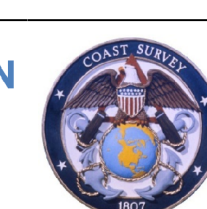




**NOT FOR NAVIGATION**



NATIONAL OCEANIC AND ATMOSPHERIC ADMINISTRATION  
NATIONAL OCEAN SERVICE  
OFFICE OF COAST SURVEY



**ESD-PHB-22, W00656**

*Florida Keys, Florida*  
*Dry Tortugas to Key Largo*

REMARKS:

- Depths in Meters
- Additional data and products for this survey available <https://www.ncei.noaa.gov>
- Isolated features such as rocks, wrecks, and obstructions are not portrayed on this product
- Read attached W00656\_read\_me.txt for additional information

