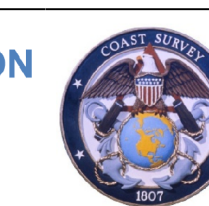


NOT FOR NAVIGATION



NATIONAL OCEANIC AND ATMOSPHERIC ADMINISTRATION
NATIONAL OCEAN SERVICE
OFFICE OF COAST SURVEY

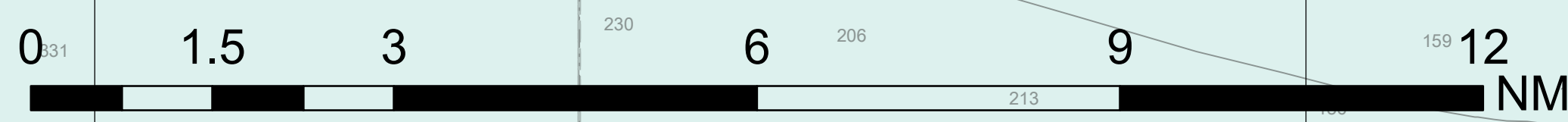
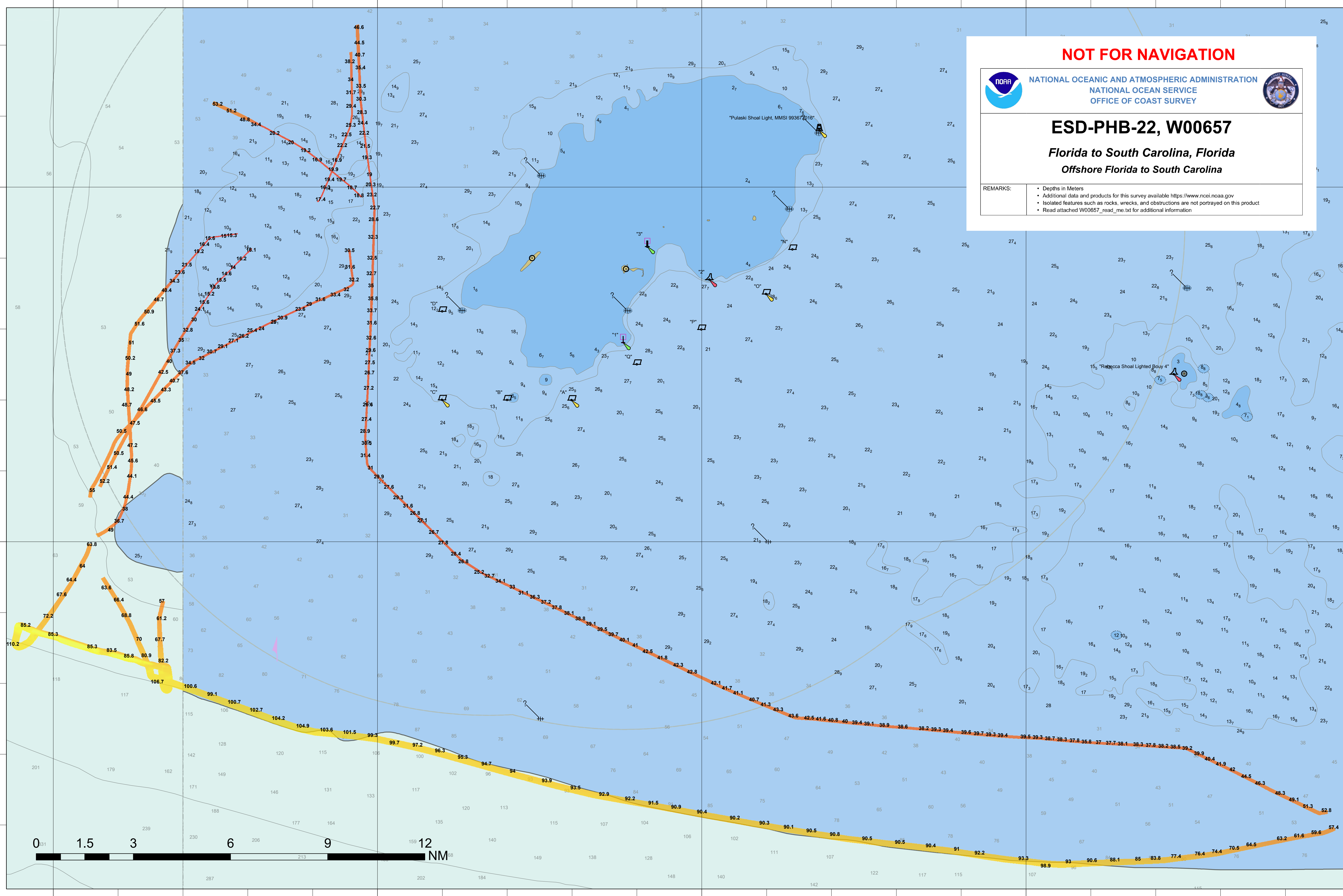


ESD-PHB-22, W00657

Florida to South Carolina, Florida
Offshore Florida to South Carolina

REMARKS:

- Depths in Meters
- Additional data and products for this survey available <https://www.ncei.noaa.gov>
- Isolated features such as rocks, wrecks, and obstructions are not portrayed on this product
- Read attached W00657_read_me.txt for additional information



NOT FOR NAVIGATION



NATIONAL OCEANIC AND ATMOSPHERIC ADMINISTRATION
NATIONAL OCEAN SERVICE
OFFICE OF COAST SURVEY

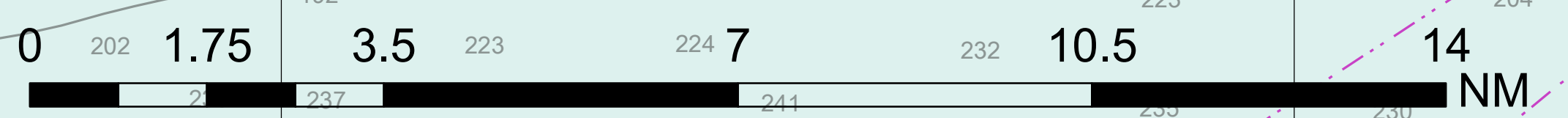
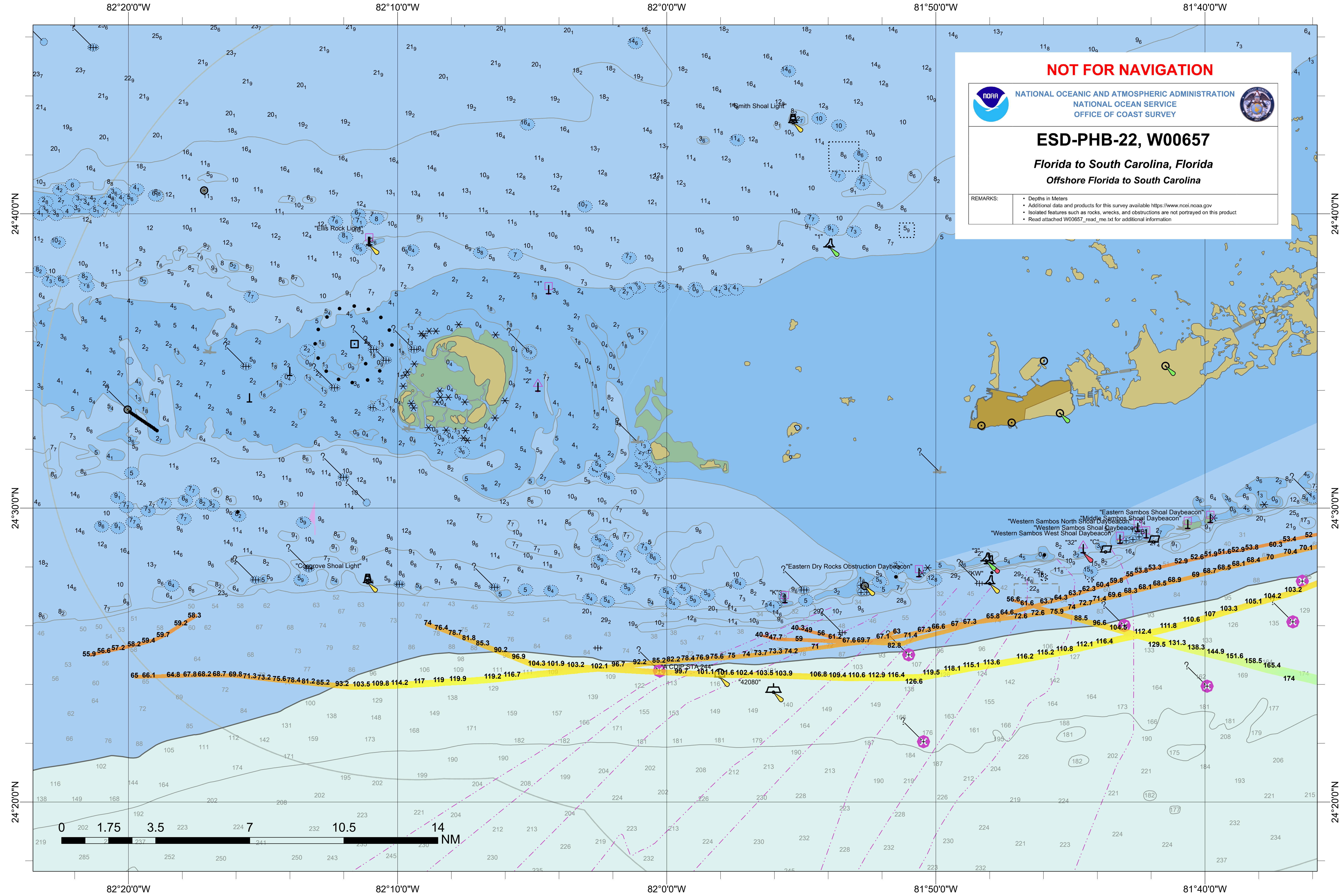


ESD-PHB-22, W00657

Florida to South Carolina, Florida
Offshore Florida to South Carolina

REMARKS:

- Depths in Meters
- Additional data and products for this survey available <https://www.ncei.noaa.gov>
- Isolated features such as rocks, wrecks, and obstructions are not portrayed on this product
- Read attached W00657_read_me.txt for additional information



NOT FOR NAVIGATION



NATIONAL OCEANIC AND ATMOSPHERIC ADMINISTRATION
NATIONAL OCEAN SERVICE
OFFICE OF COAST SURVEY

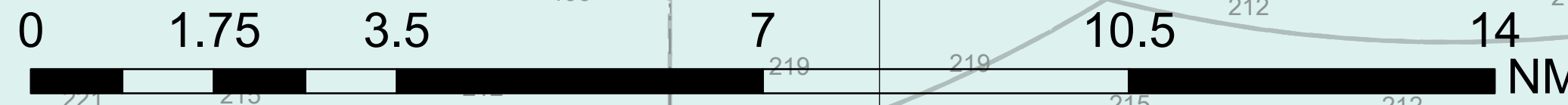
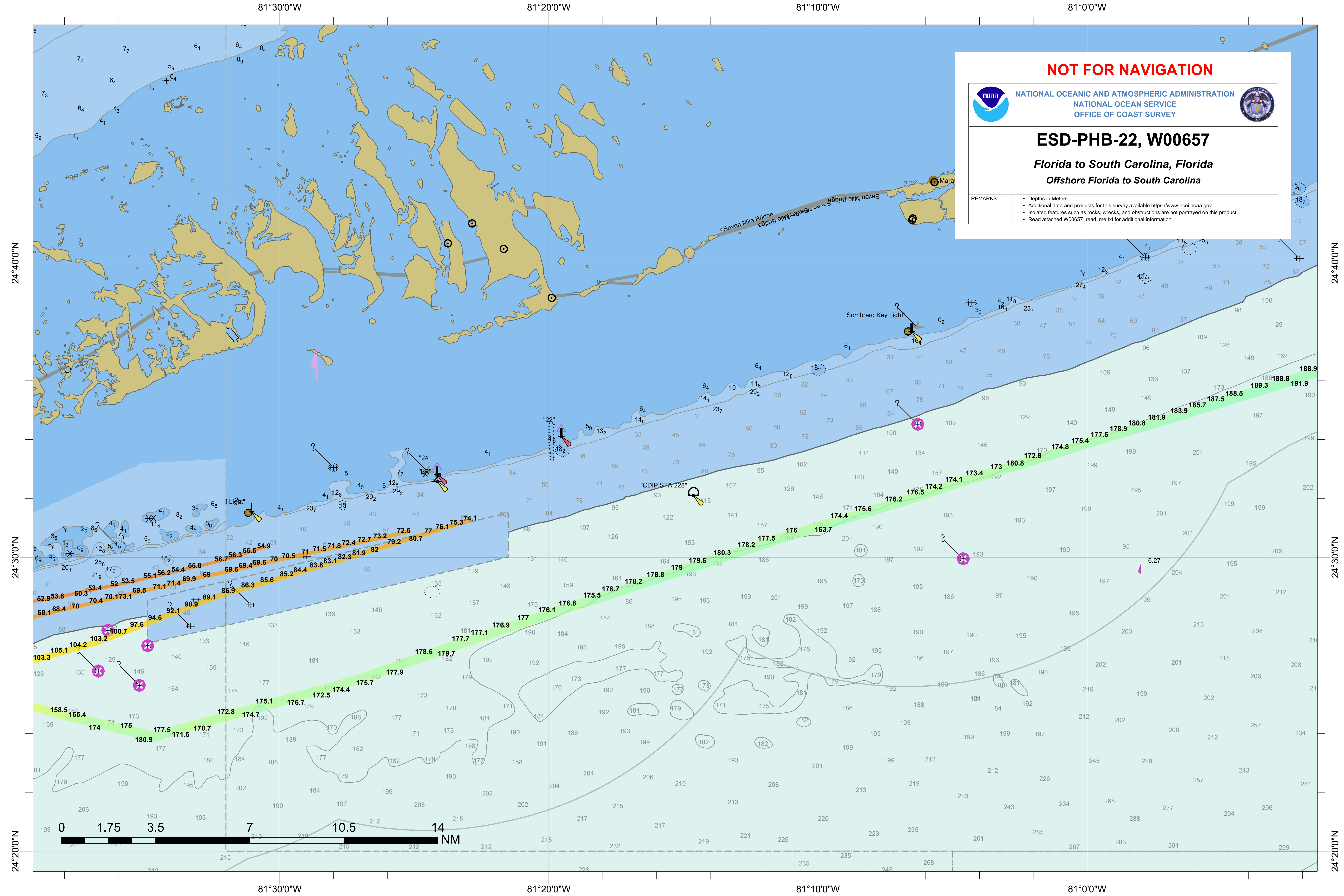


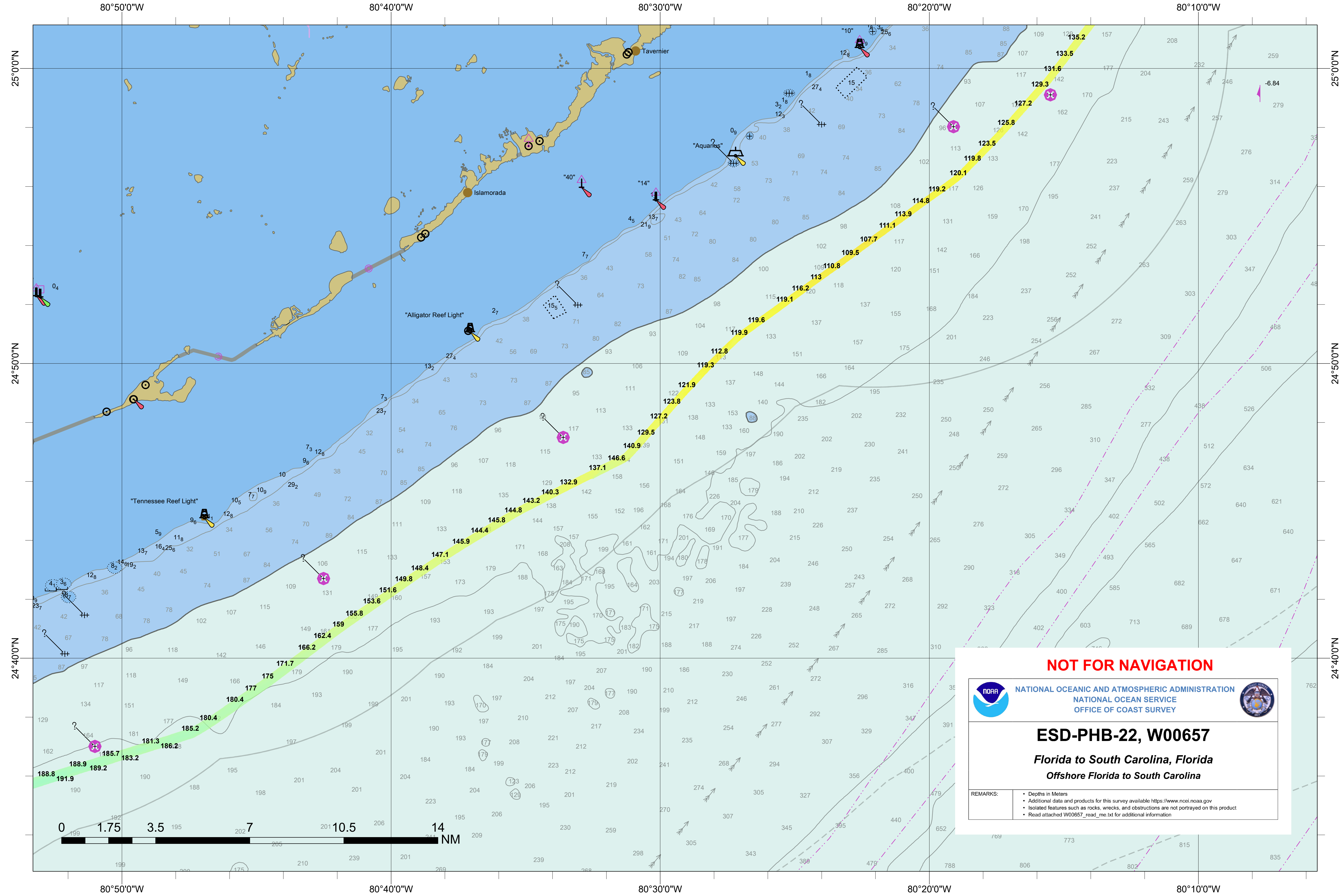
ESD-PHB-22, W00657

Florida to South Carolina, Florida
Offshore Florida to South Carolina


REMARKS:

- Depths in Meters
- Additional data and products for this survey available <https://www.ncei.noaa.gov>
- Isolated features such as rocks, wrecks, and obstructions are not portrayed on this product
- Read attached W00657_read_me.txt for additional information






NOT FOR NAVIGATION



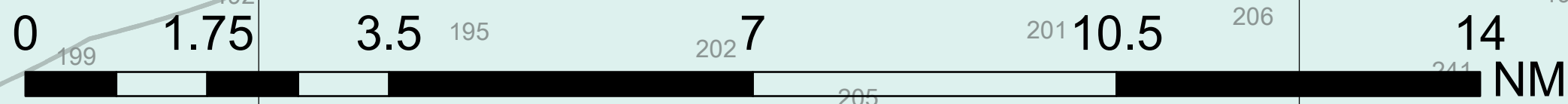
NATIONAL OCEANIC AND ATMOSPHERIC ADMINISTRATION
NATIONAL OCEAN SERVICE
OFFICE OF COAST SURVEY



ESD-PHB-22, W00657

Florida to South Carolina, Florida
Offshore Florida to South Carolina

REMARKS:	<ul style="list-style-type: none"> • Depths in Meters • Additional data and products for this survey available https://www.noai.noaa.gov • Isolated features such as rocks, wrecks, and obstructions are not portrayed on this product • Read attached W00657_read_me.txt for additional information
-----------------	--



80°20'0"W

80°10'0"W

80°0'0"W

79°50'0"W

25°40'0"N

25°40'0"N

25°30'0"N

25°30'0"N

25°20'0"N

25°20'0"N

25°10'0"N

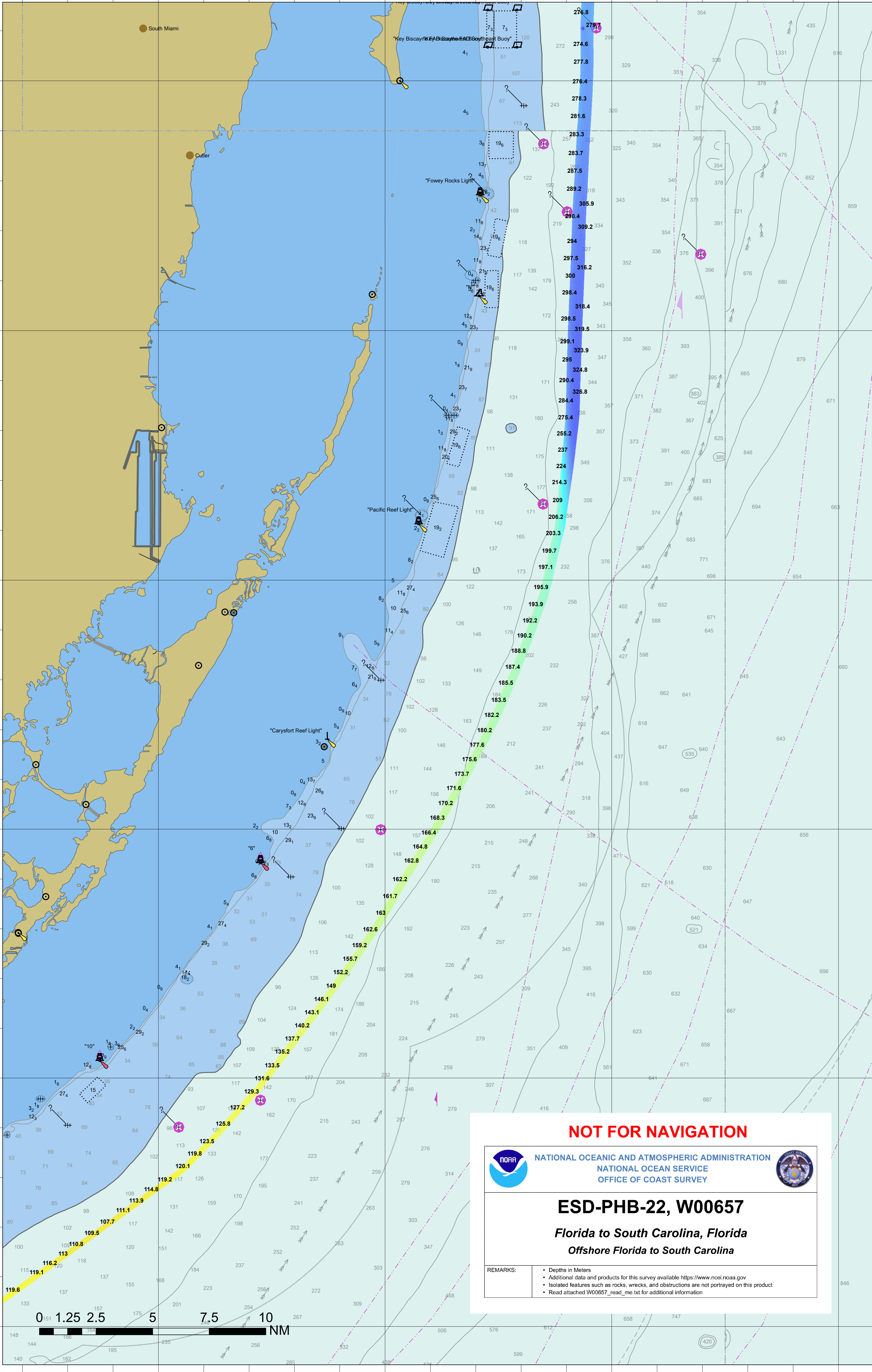
25°10'0"N

25°0'0"N

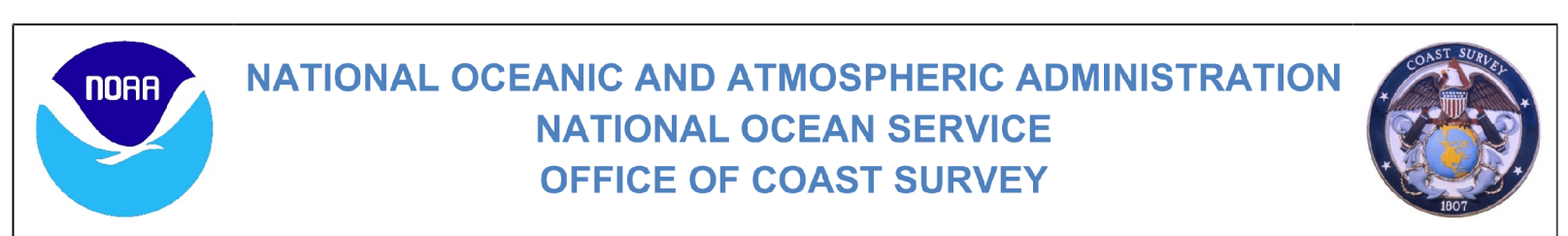
25°0'0"N

24°50'0"N

24°50'0"N



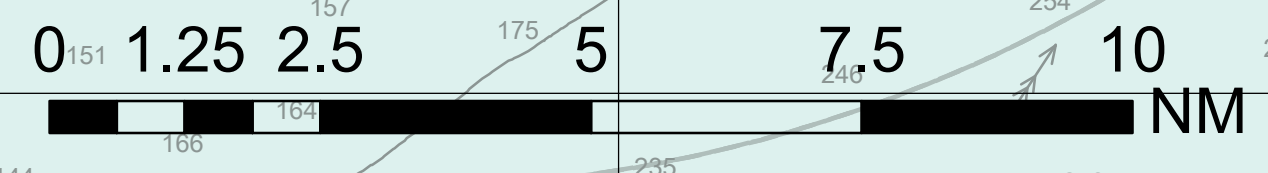
NOT FOR NAVIGATION



ESD-PHB-22, W00657
Florida to South Carolina, Florida
Offshore Florida to South Carolina

REMARKS:

- Depths in Meters
- Additional data and products for this survey available <https://www.ncei.noaa.gov>
- Isolated features such as rocks, wrecks, and obstructions are not portrayed on this product
- Read attached W00657_read_me.txt for additional information



80°20'0"W

80°10'0"W

80°0'0"W

79°50'0"W

80°10'0"W

80°0'0"W

79°50'0"W

79°40'0"W

26°30'0"N

26°30'0"N

26°20'0"N

26°20'0"N

26°10'0"N

26°10'0"N

26°0'0"N

26°0'0"N

25°50'0"N

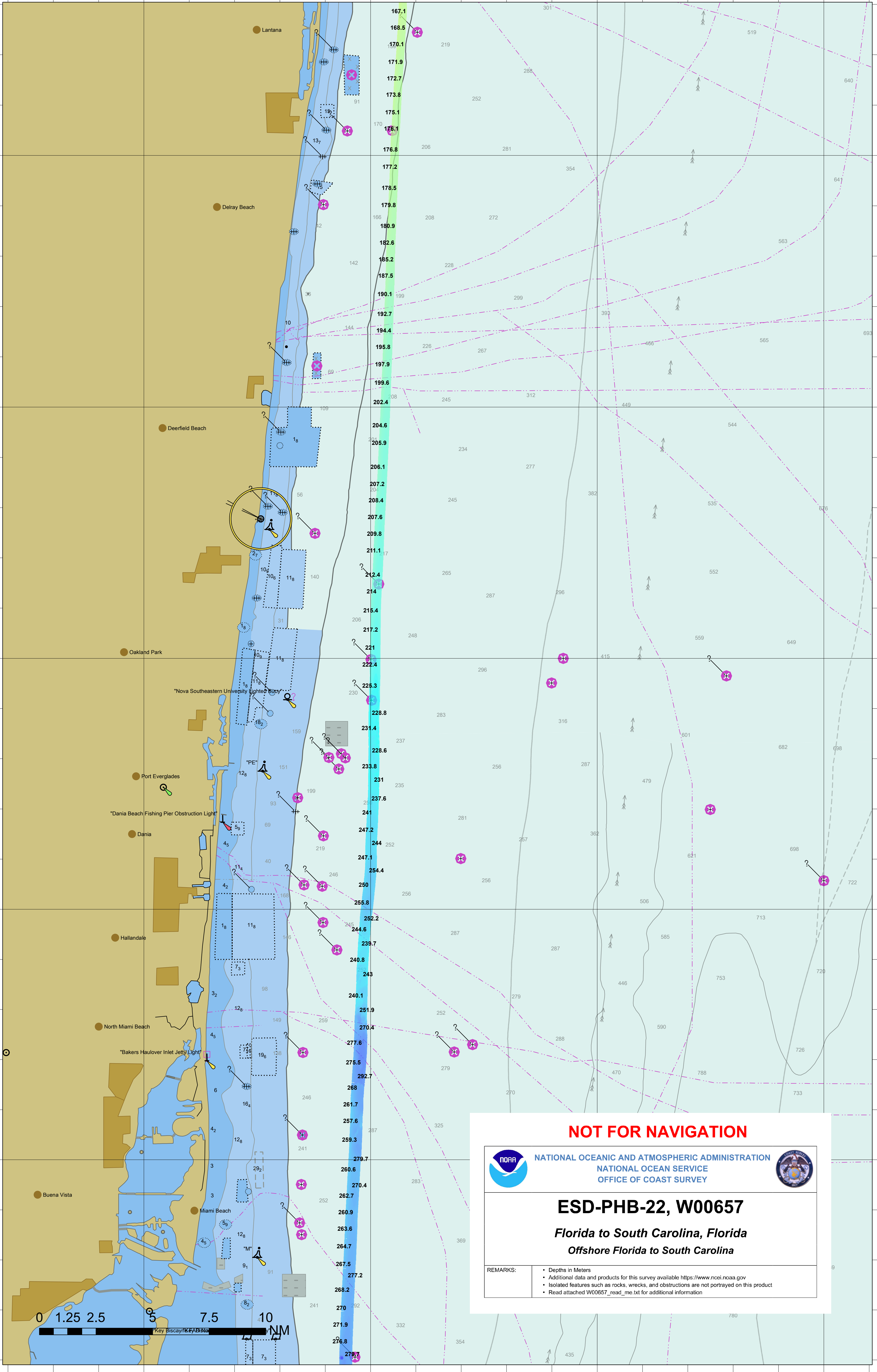
25°50'0"N

80°10'0"W

80°0'0"W

79°50'0"W

79°40'0"W



NOT FOR NAVIGATION



NATIONAL OCEANIC AND ATMOSPHERIC ADMINISTRATION
NATIONAL OCEAN SERVICE
OFFICE OF COAST SURVEY



ESD-PHB-22, W00657

*Florida to South Carolina, Florida
Offshore Florida to South Carolina*

REMARKS:

- Depths in Meters
- Additional data and products for this survey available <https://www.ncei.noaa.gov>
- Isolated features such as rocks, wrecks, and obstructions are not portrayed on this product
- Read attached W00657_read_me.txt for additional information



80°10'0"W

80°0'0"W

79°50'0"W

79°40'0"W

27°20'0"N

27°20'0"N

27°10'0"N

27°10'0"N

27°0'0"N

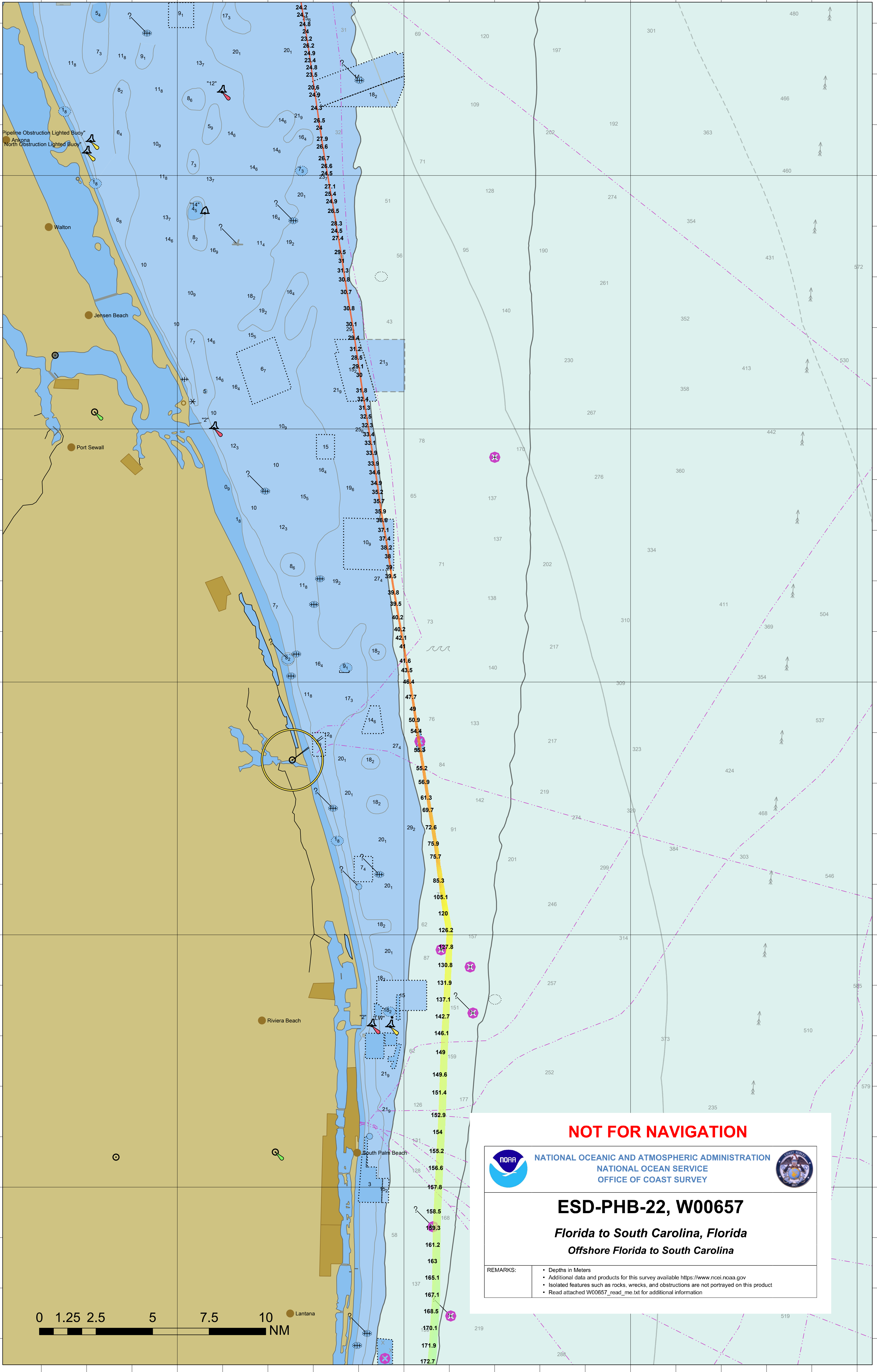
27°0'0"N

26°50'0"N

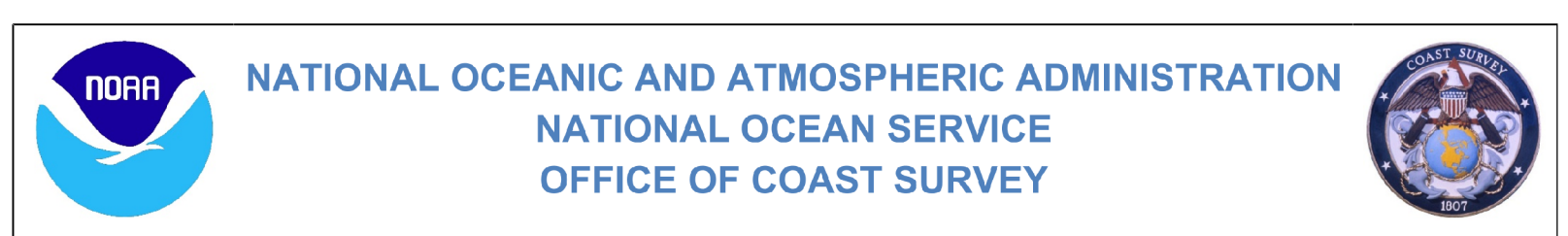
26°50'0"N

26°40'0"N

26°40'0"N



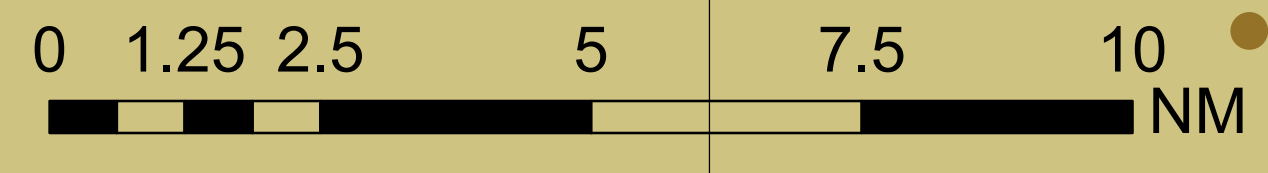
NOT FOR NAVIGATION



ESD-PHB-22, W00657
Florida to South Carolina, Florida
Offshore Florida to South Carolina

REMARKS:

- Depths in Meters
- Additional data and products for this survey available <https://www.ncei.noaa.gov>
- Isolated features such as rocks, wrecks, and obstructions are not portrayed on this product
- Read attached W00657_read_me.txt for additional information



80°10'0"W

80°0'0"W

79°50'0"W

79°40'0"W

80°20'0"W

80°10'0"W

80°0'0"W

79°50'0"W

28°10'0"N

28°0'0"N

27°50'0"N

27°40'0"N

27°30'0"N

28°10'0"N

28°0'0"N

27°50'0"N

27°40'0"N

27°30'0"N

80°20'0"W

80°10'0"W

80°0'0"W

79°50'0"W

NOT FOR NAVIGATION



NATIONAL OCEANIC AND ATMOSPHERIC ADMINISTRATION
NATIONAL OCEAN SERVICE
OFFICE OF COAST SURVEY

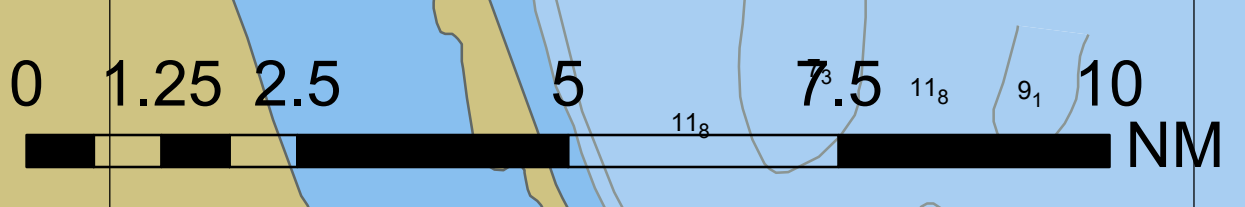
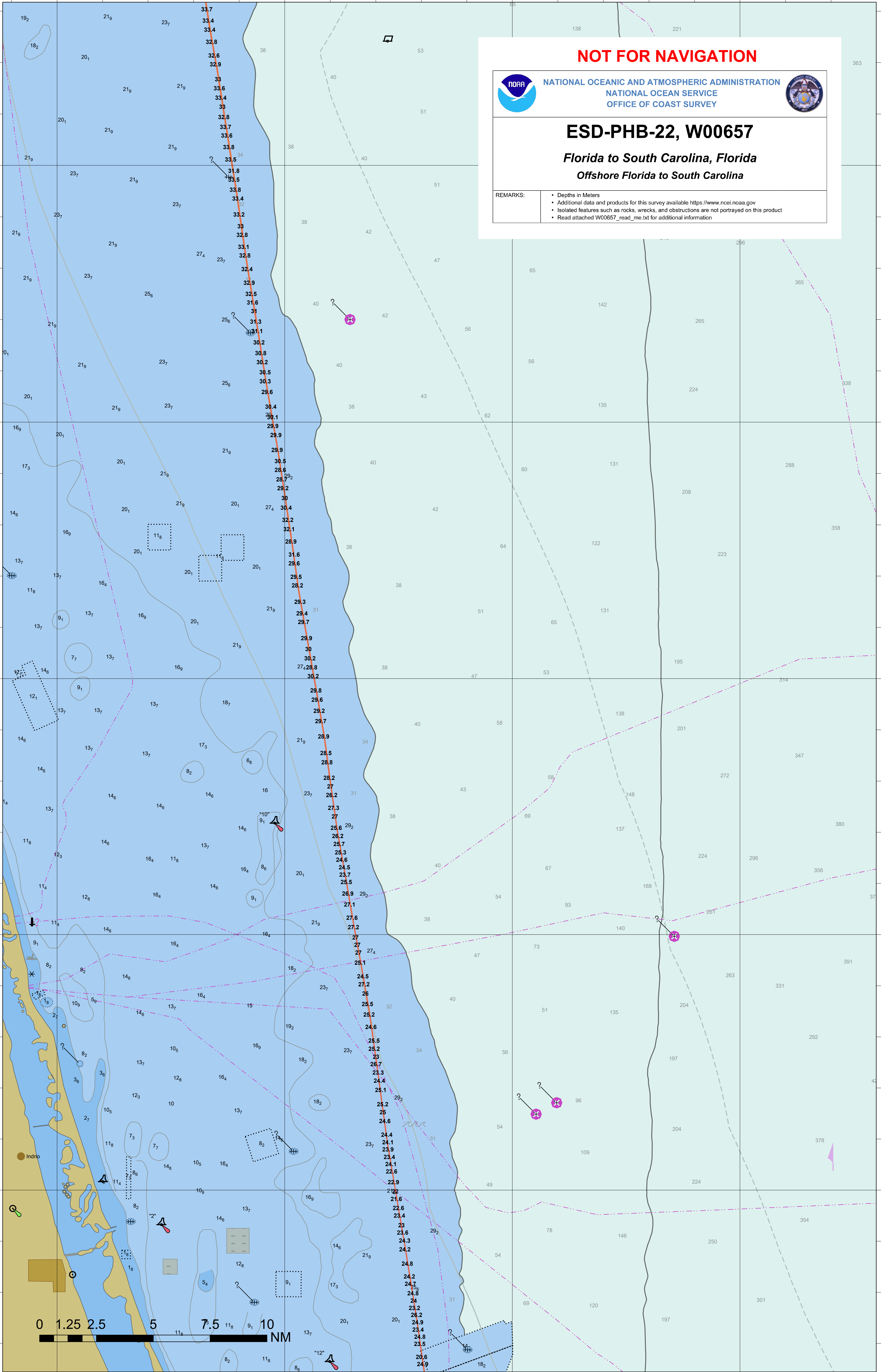


ESD-PHB-22, W00657

Florida to South Carolina, Florida
Offshore Florida to South Carolina

REMARKS:

- Depths in Meters
- Additional data and products for this survey available <https://www.ncei.noaa.gov>
- Isolated features such as rocks, wrecks, and obstructions are not portrayed on this product
- Read attached W00657_read_me.txt for additional information



80°30'0"W

80°20'0"W

80°10'0"W

80°0'0"W

29°0'0"N

29°0'0"N

28°50'0"N

28°50'0"N

28°40'0"N

28°40'0"N

28°30'0"N

28°30'0"N

28°20'0"N

28°20'0"N

80°30'0"W

80°20'0"W

80°10'0"W

80°0'0"W

NOT FOR NAVIGATION



NATIONAL OCEANIC AND ATMOSPHERIC ADMINISTRATION
NATIONAL OCEAN SERVICE
OFFICE OF COAST SURVEY

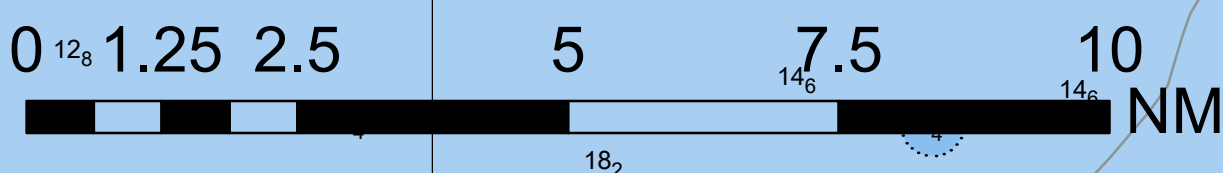
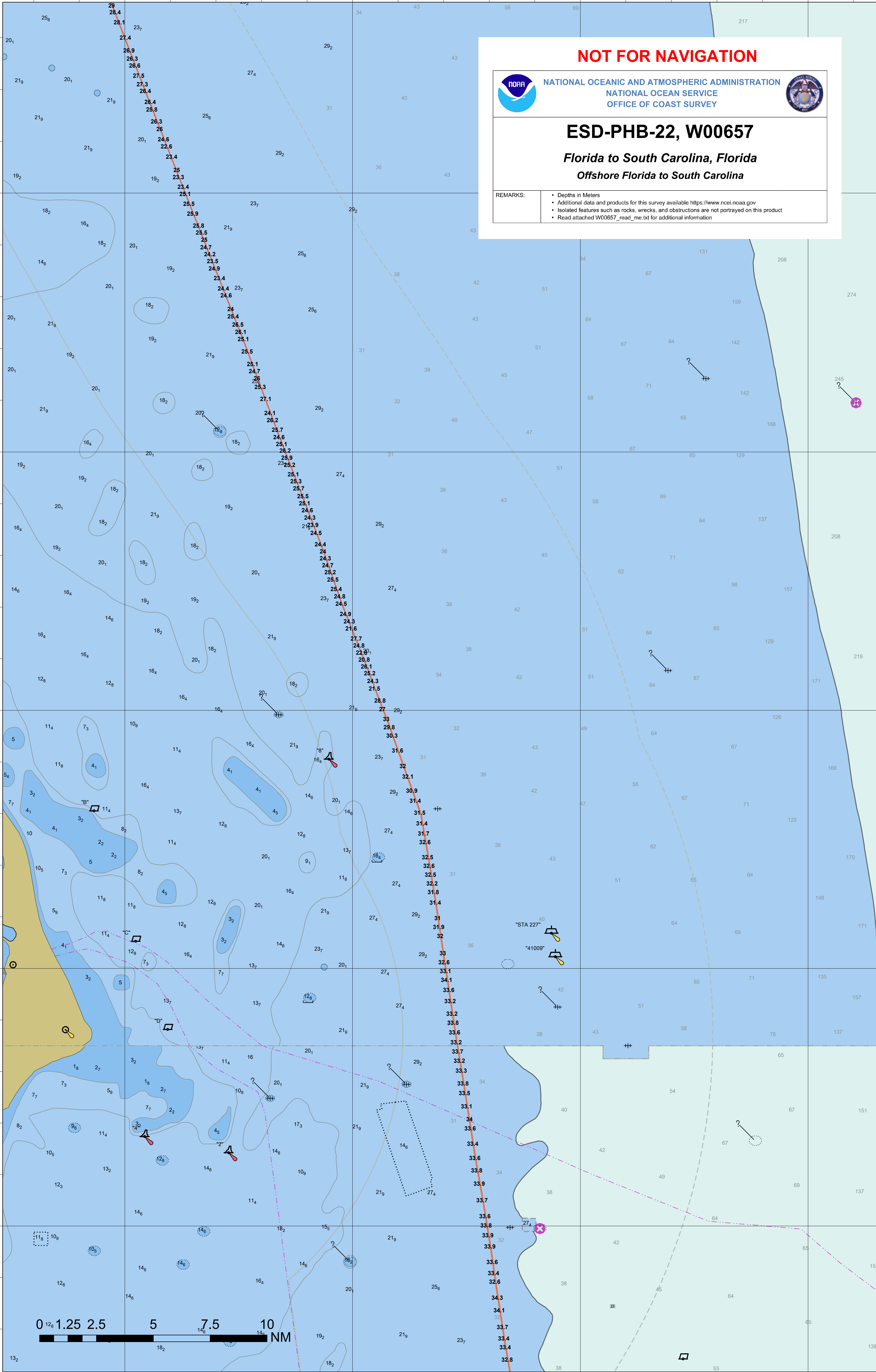


ESD-PHB-22, W00657

Florida to South Carolina, Florida
Offshore Florida to South Carolina

REMARKS:

- Depths in Meters
- Additional data and products for this survey available <https://www.ncei.noaa.gov>
- Isolated features such as rocks, wrecks, and obstructions are not portrayed on this product
- Read attached W00657_read_me.txt for additional information



80°50'0"W

80°40'0"W

80°30'0"W

80°20'0"W

29°50'0"N

29°40'0"N

29°30'0"N

29°20'0"N

29°10'0"N

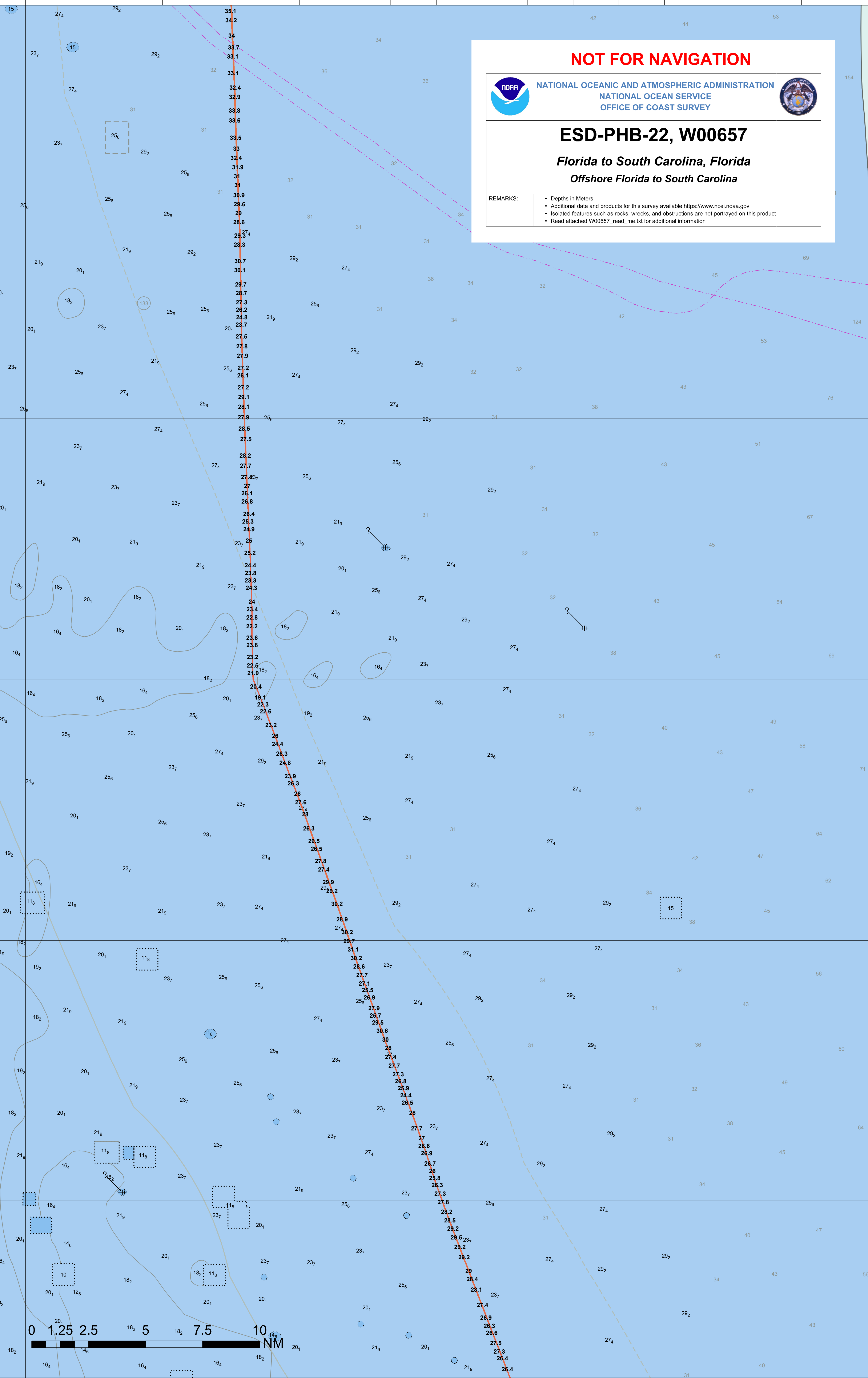
29°50'0"N

29°40'0"N

29°30'0"N

29°20'0"N

29°10'0"N



NOT FOR NAVIGATION



NATIONAL OCEANIC AND ATMOSPHERIC ADMINISTRATION
NATIONAL OCEAN SERVICE
OFFICE OF COAST SURVEY

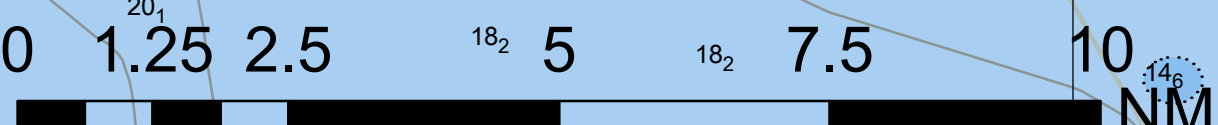


ESD-PHB-22, W00657

*Florida to South Carolina, Florida
Offshore Florida to South Carolina*

REMARKS:

- Depths in Meters
- Additional data and products for this survey available <https://www.ncei.noaa.gov>
- Isolated features such as rocks, wrecks, and obstructions are not portrayed on this product
- Read attached W00657_read_me.txt for additional information



80°50'0"W

80°40'0"W

80°30'0"W

80°20'0"W

81°00'W

80°50'W

80°40'W

80°30'W

30°40'N

30°30'N

30°20'N

30°10'N

30°00'N

30°40'N


30°30'N

30°20'N


30°10'N

30°00'N

NOT FOR NAVIGATION



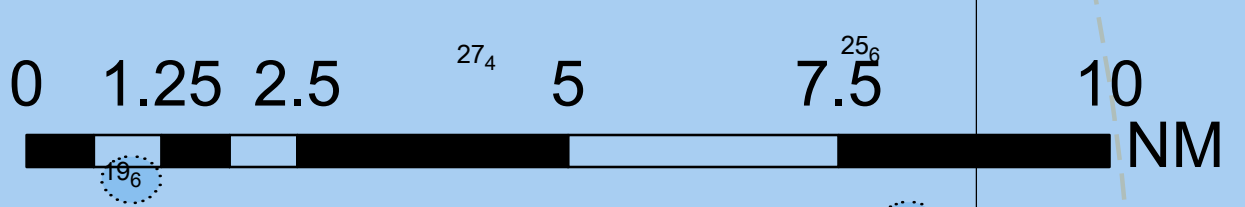
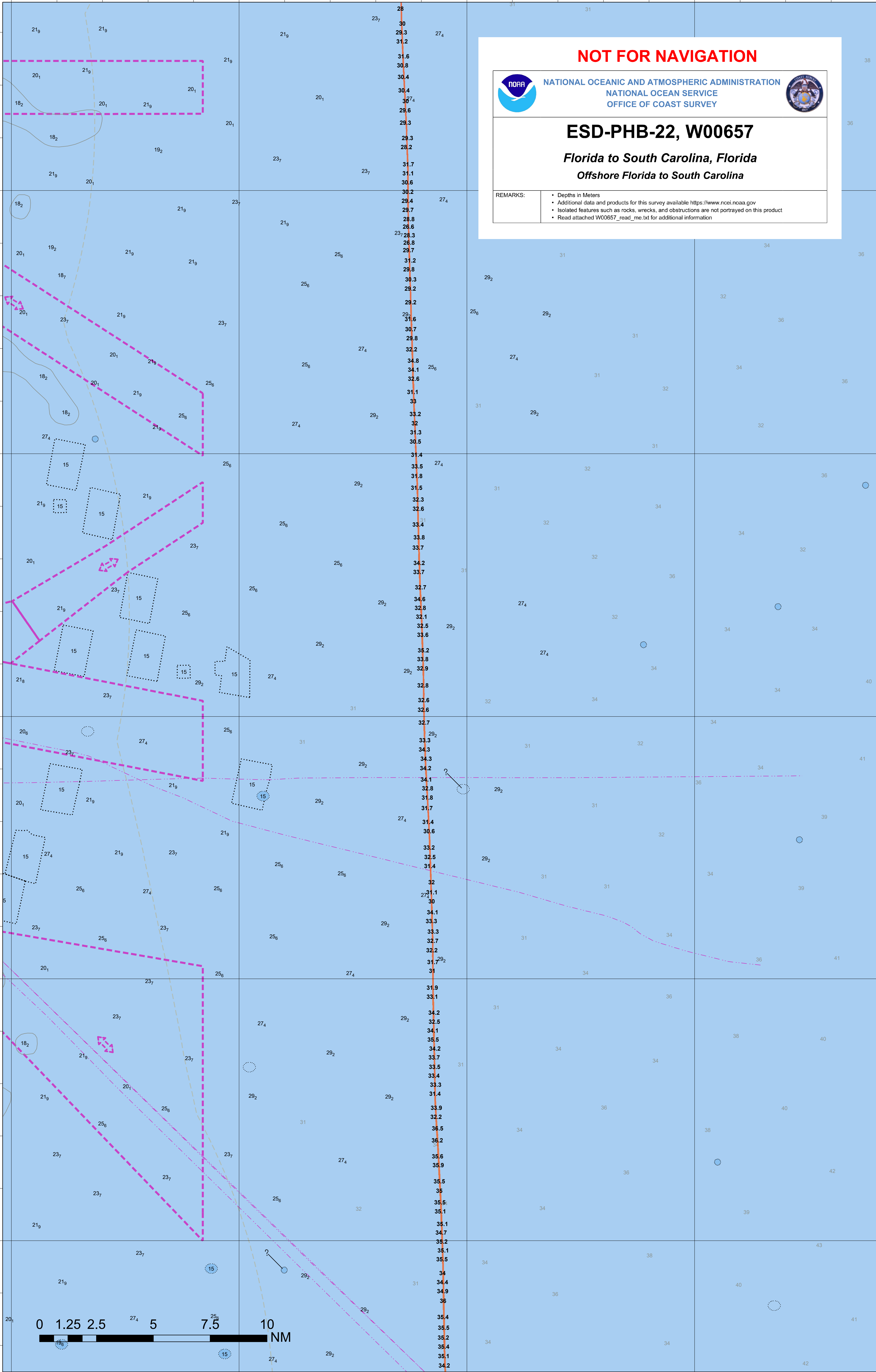
NATIONAL OCEANIC AND ATMOSPHERIC ADMINISTRATION
NATIONAL OCEAN SERVICE
OFFICE OF COAST SURVEY



ESD-PHB-22, W00657

Florida to South Carolina, Florida
Offshore Florida to South Carolina

REMARKS:	<ul style="list-style-type: none"> • Depths in Meters • Additional data and products for this survey available https://www.ncei.noaa.gov • Isolated features such as rocks, wrecks, and obstructions are not portrayed on this product • Read attached W00657_read_me.txt for additional information
----------	--



80°50'0"W

80°40'0"W

80°30'0"W

31°30'0"N

31°30'0"N

31°20'0"N

31°20'0"N

31°10'0"N

31°10'0"N

31°0'0"N

31°0'0"N

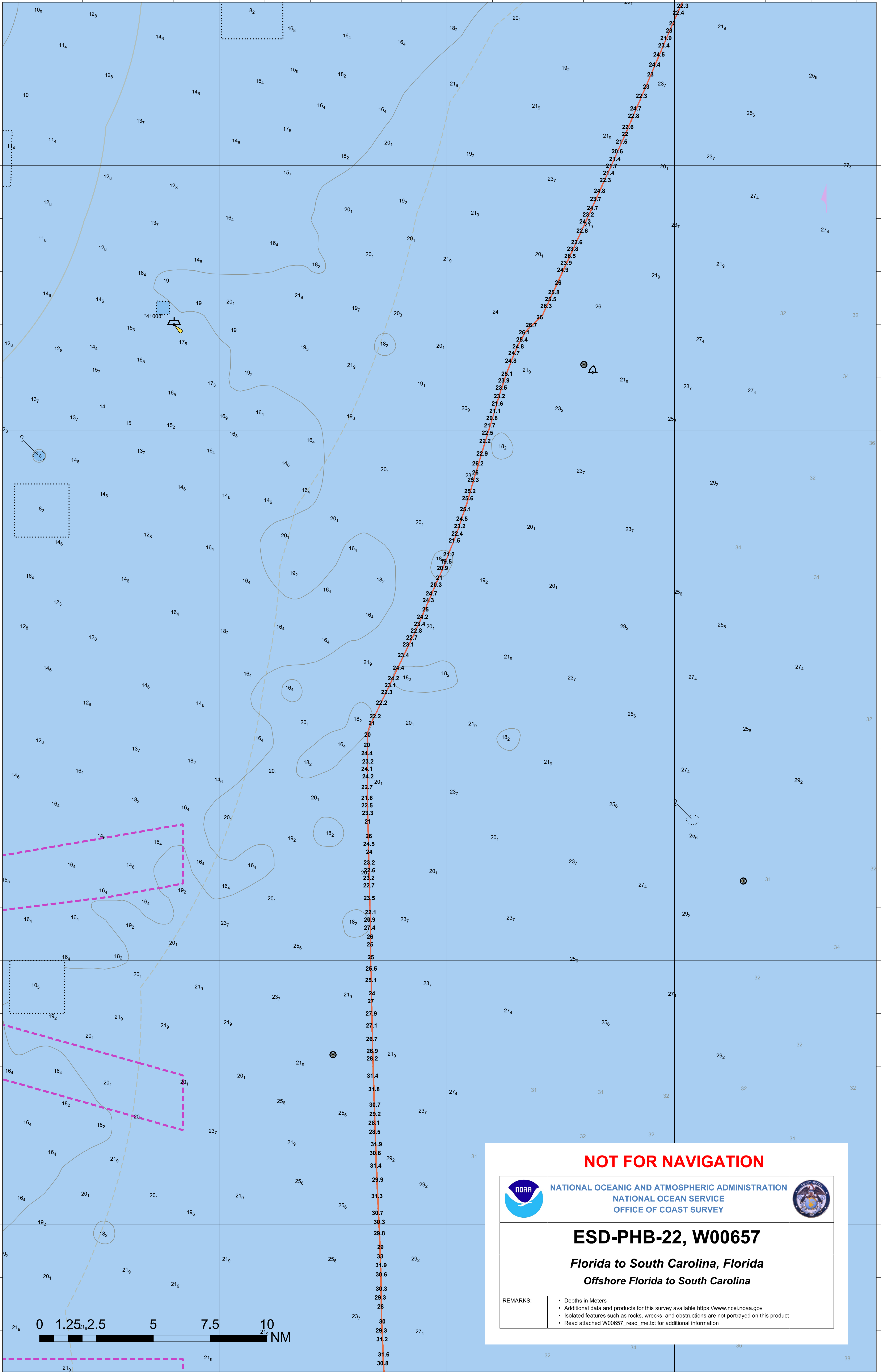
30°50'0"N

30°50'0"N

80°50'0"W

80°40'0"W

80°30'0"W



NOT FOR NAVIGATION



NATIONAL OCEANIC AND ATMOSPHERIC ADMINISTRATION
NATIONAL OCEAN SERVICE
OFFICE OF COAST SURVEY

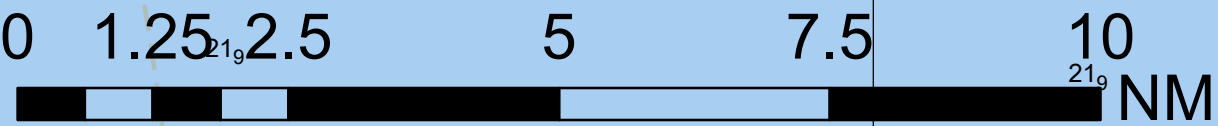


ESD-PHB-22, W00657

*Florida to South Carolina, Florida
Offshore Florida to South Carolina*

REMARKS:

- Depths in Meters
- Additional data and products for this survey available <https://www.ncei.noaa.gov>
- Isolated features such as rocks, wrecks, and obstructions are not portrayed on this product
- Read attached W00657_read_me.txt for additional information



80°30'0"W

80°20'0"W

80°10'0"W

80°0'0"W

32°20'0"N

32°20'0"N

32°10'0"N

32°10'0"N

32°0'0"N

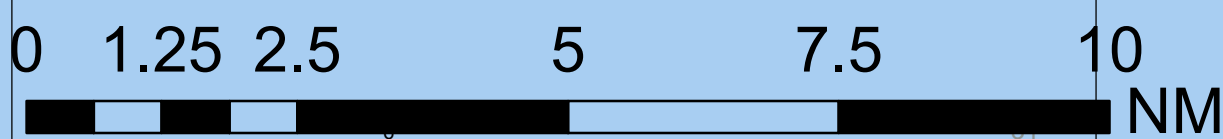
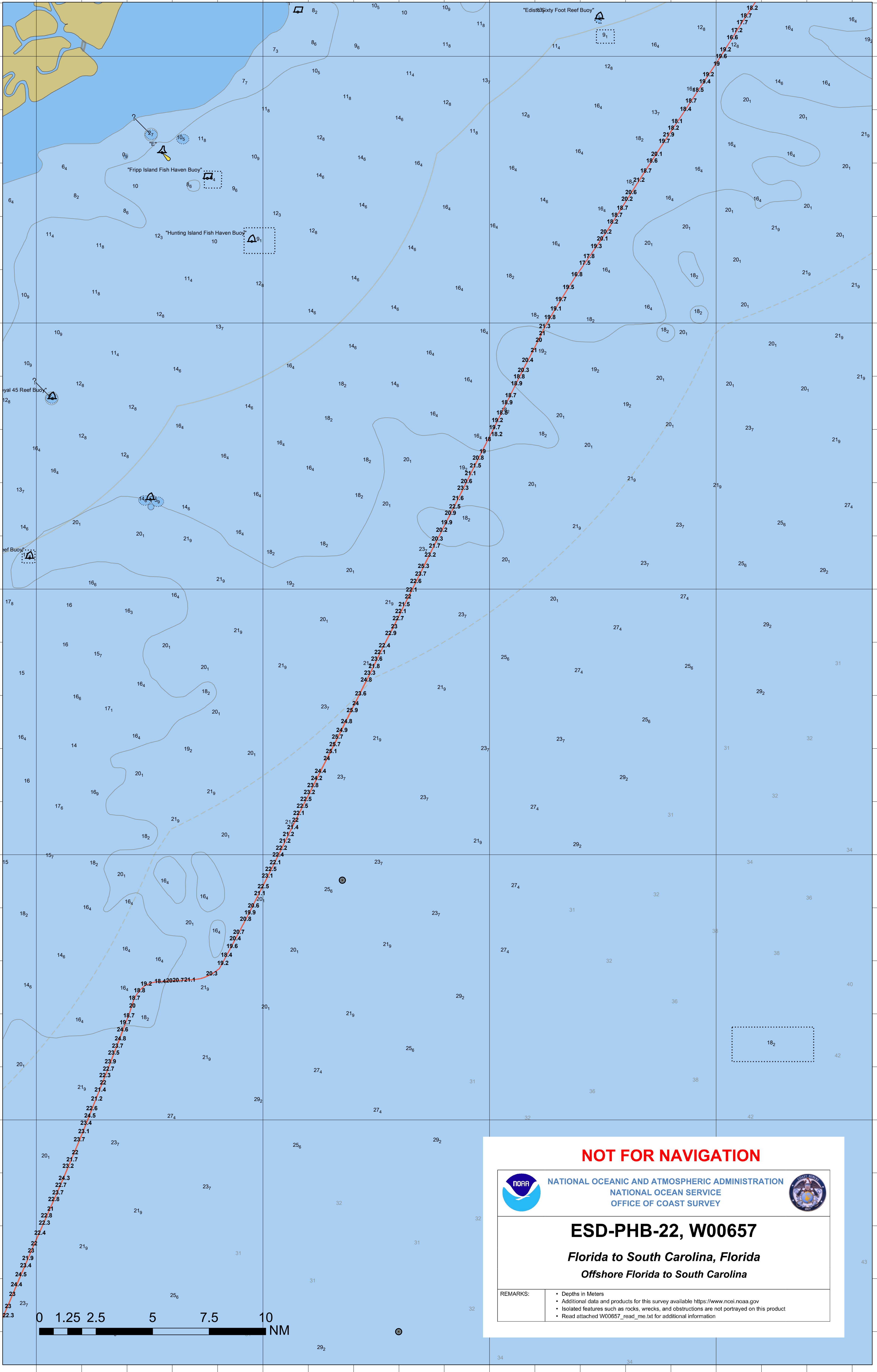
32°0'0"N

31°50'0"N

31°50'0"N

31°40'0"N

31°40'0"N



NOT FOR NAVIGATION

NATIONAL OCEANIC AND ATMOSPHERIC ADMINISTRATION
 NATIONAL OCEAN SERVICE
 OFFICE OF COAST SURVEY

ESD-PHB-22, W00657

Florida to South Carolina, Florida
Offshore Florida to South Carolina

REMARKS:	<ul style="list-style-type: none"> • Depths in Meters • Additional data and products for this survey available https://www.ncei.noaa.gov • Isolated features such as rocks, wrecks, and obstructions are not portrayed on this product • Read attached W00657_read_me.txt for additional information
----------	--

80°30'0"W

80°20'0"W

80°10'0"W

80°0'0"W

79°50'0"W

32°40'0"N

32°40'0"N

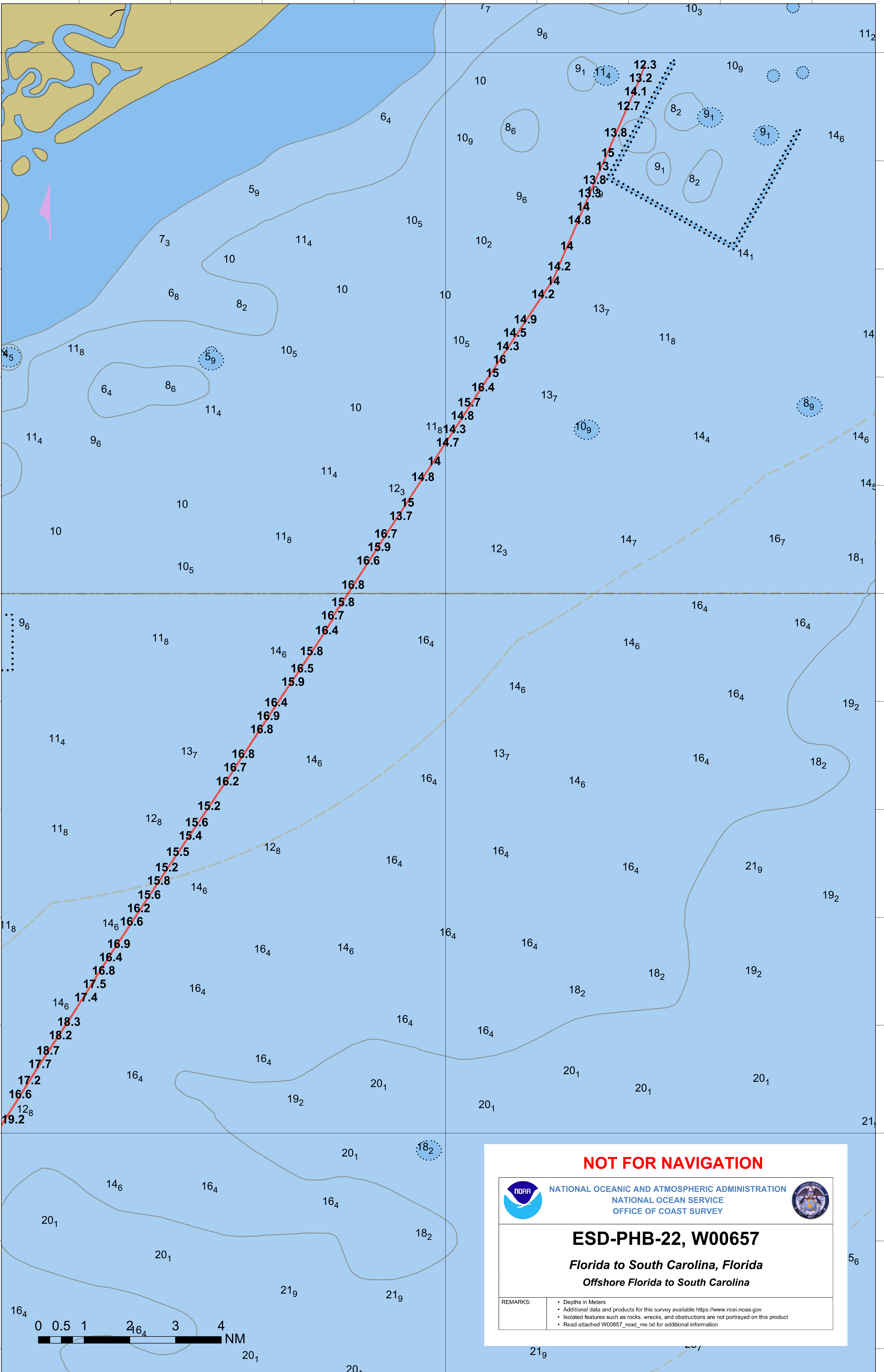
32°30'0"N

32°30'0"N

32°20'0"N

32°20'0"N

79°50'0"W



NOT FOR NAVIGATION



NATIONAL OCEANIC AND ATMOSPHERIC ADMINISTRATION
NATIONAL OCEAN SERVICE
OFFICE OF COAST SURVEY



ESD-PHB-22, W00657

*Florida to South Carolina, Florida
Offshore Florida to South Carolina*

REMARKS:

- Depths in Meters
- Additional data and products for this survey available <https://www.ncei.noaa.gov>
- Isolated features such as rocks, wrecks, and obstructions are not portrayed on this product
- Read attached W00657_read_me.txt for additional information

0 0.5 1 2 3 4 NM