

NOT FOR NAVIGATION



NATIONAL OCEANIC AND ATMOSPHERIC ADMINISTRATION
NATIONAL OCEAN SERVICE
OFFICE OF COAST SURVEY



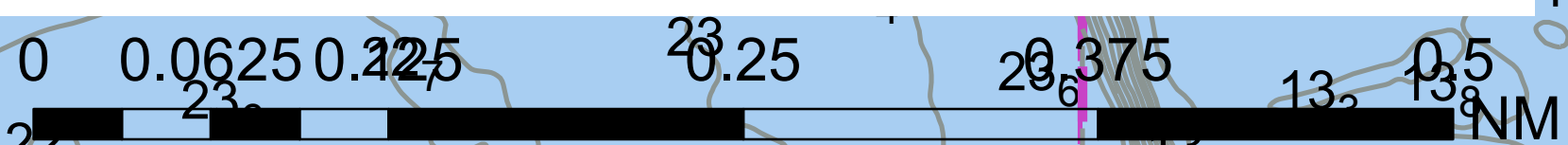
ESD-PHB-22, W00661

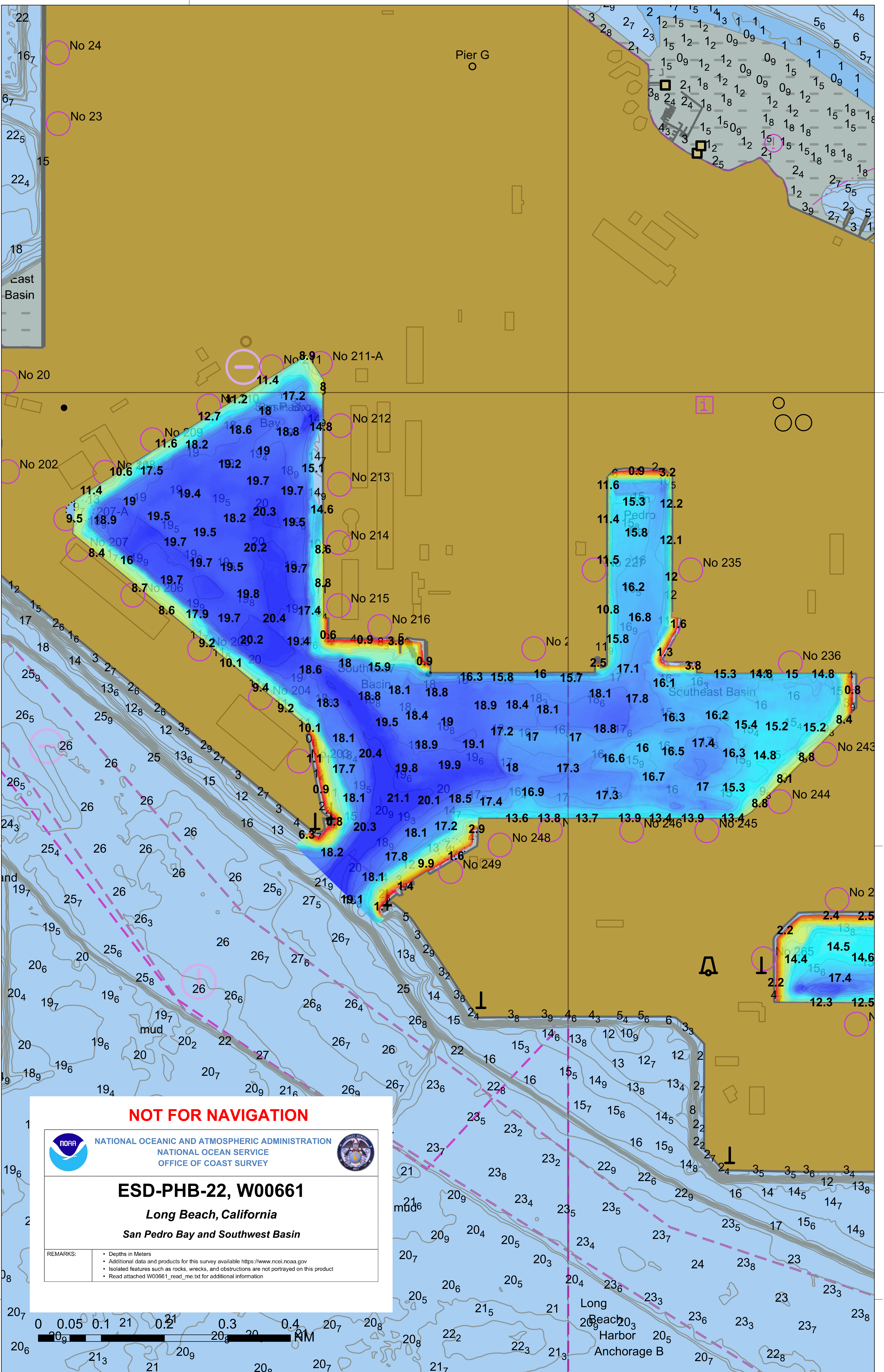
Long Beach, California

San Pedro Bay and Southwest Basin

REMARKS:

- Depths in Meters
- Additional data and products for this survey available <https://www.ncei.noaa.gov>
- Isolated features such as rocks, wrecks, and obstructions are not portrayed on this product
- Read attached W00661_read_me.txt for additional information





NOT FOR NAVIGATION



NATIONAL OCEANIC AND ATMOSPHERIC ADMINISTRATION
NATIONAL OCEAN SERVICE
OFFICE OF COAST SURVEY



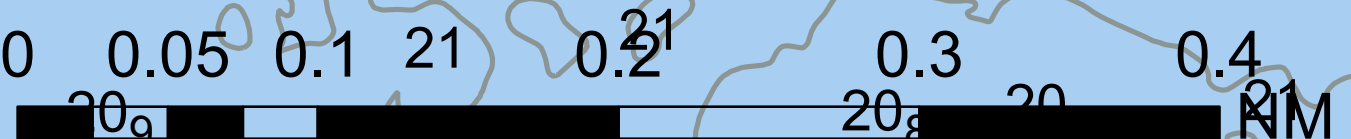
ESD-PHB-22, W00661

Long Beach, California

San Pedro Bay and Southwest Basin

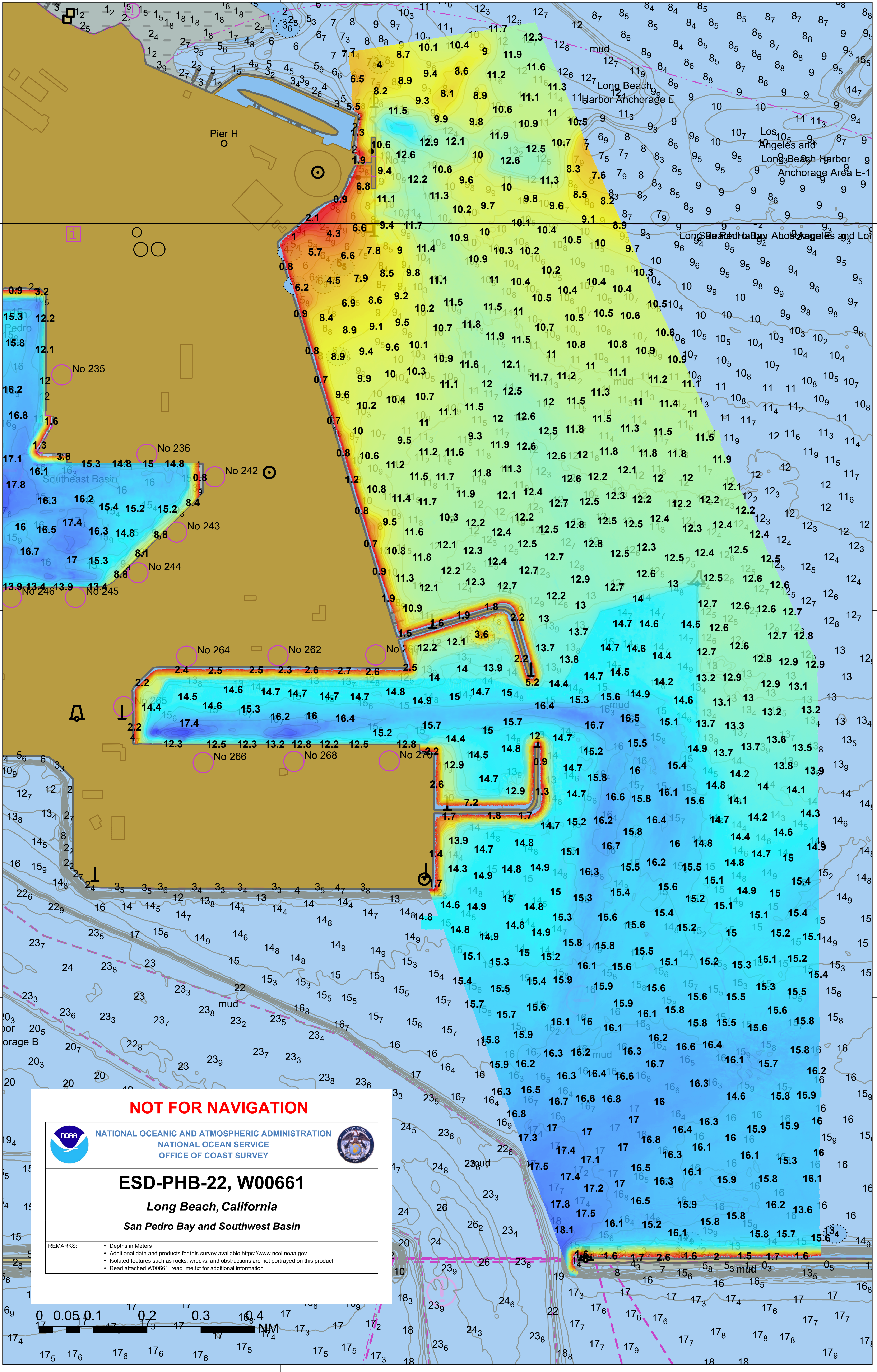
REMARKS:

- Depths in Meters
- Additional data and products for this survey available <https://www.ncei.noaa.gov>
- Isolated features such as rocks, wrecks, and obstructions are not portrayed on this product
- Read attached W00661_read_me.txt for additional information




33°45'0"N

33°45'0"N



NOT FOR NAVIGATION


NATIONAL OCEANIC AND ATMOSPHERIC ADMINISTRATION
 NATIONAL OCEAN SERVICE
 OFFICE OF COAST SURVEY

ESD-PHB-22, W00661
Long Beach, California
San Pedro Bay and Southwest Basin

REMARKS:

- Depths in Meters
- Additional data and products for this survey available <https://www.ncei.noaa.gov>
- Isolated features such as rocks, wrecks, and obstructions are not portrayed on this product
- Read attached W00661_read_me.txt for additional information

