

NOT FOR NAVIGATION



NATIONAL OCEANIC AND ATMOSPHERIC ADMINISTRATION
NATIONAL OCEAN SERVICE
OFFICE OF COAST SURVEY



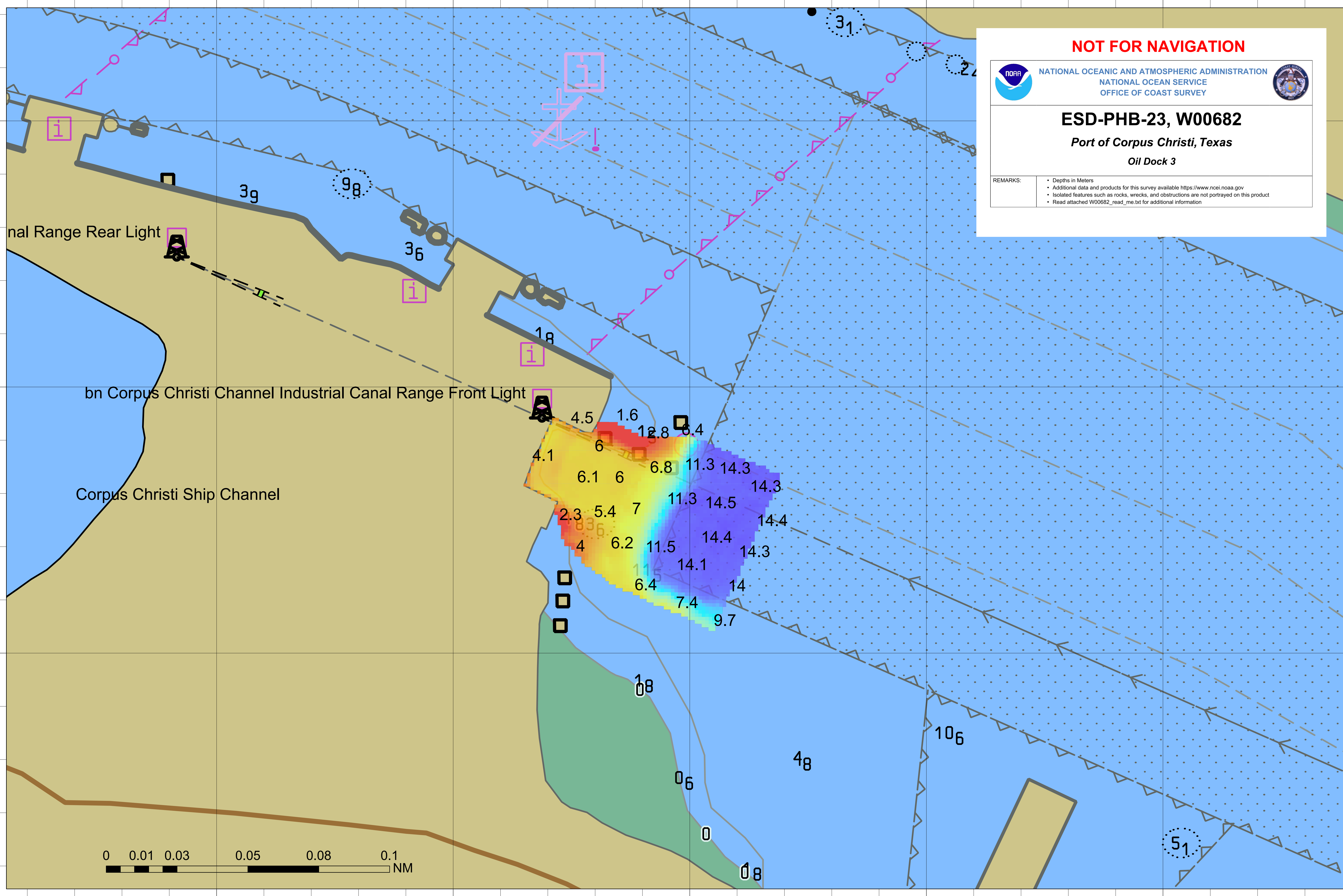
ESD-PHB-23, W00682

Port of Corpus Christi, Texas

Oil Dock 3

REMARKS:

- Depths in Meters
- Additional data and products for this survey available <https://www.ncei.noaa.gov>
- Isolated features such as rocks, wrecks, and obstructions are not portrayed on this product
- Read attached W00682_read_me.txt for additional information



Industrial Canal Range Rear Light

Industrial Canal Range Front Light

Corpus Christi Ship Channel

