

97°29'40"W

97°29'30"W

NOT FOR NAVIGATION



NATIONAL OCEANIC AND ATMOSPHERIC ADMINISTRATION
NATIONAL OCEAN SERVICE
OFFICE OF COAST SURVEY



ESD-PHB-23, W00684

Port of Corpus Christi, Texas

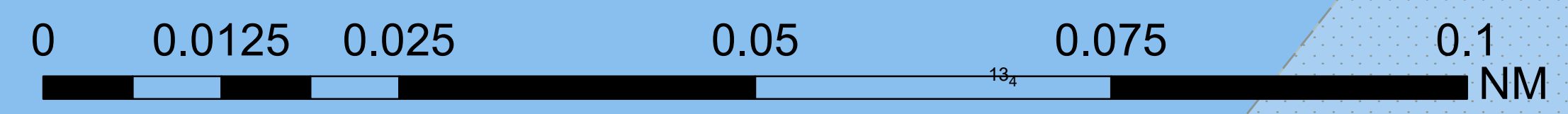
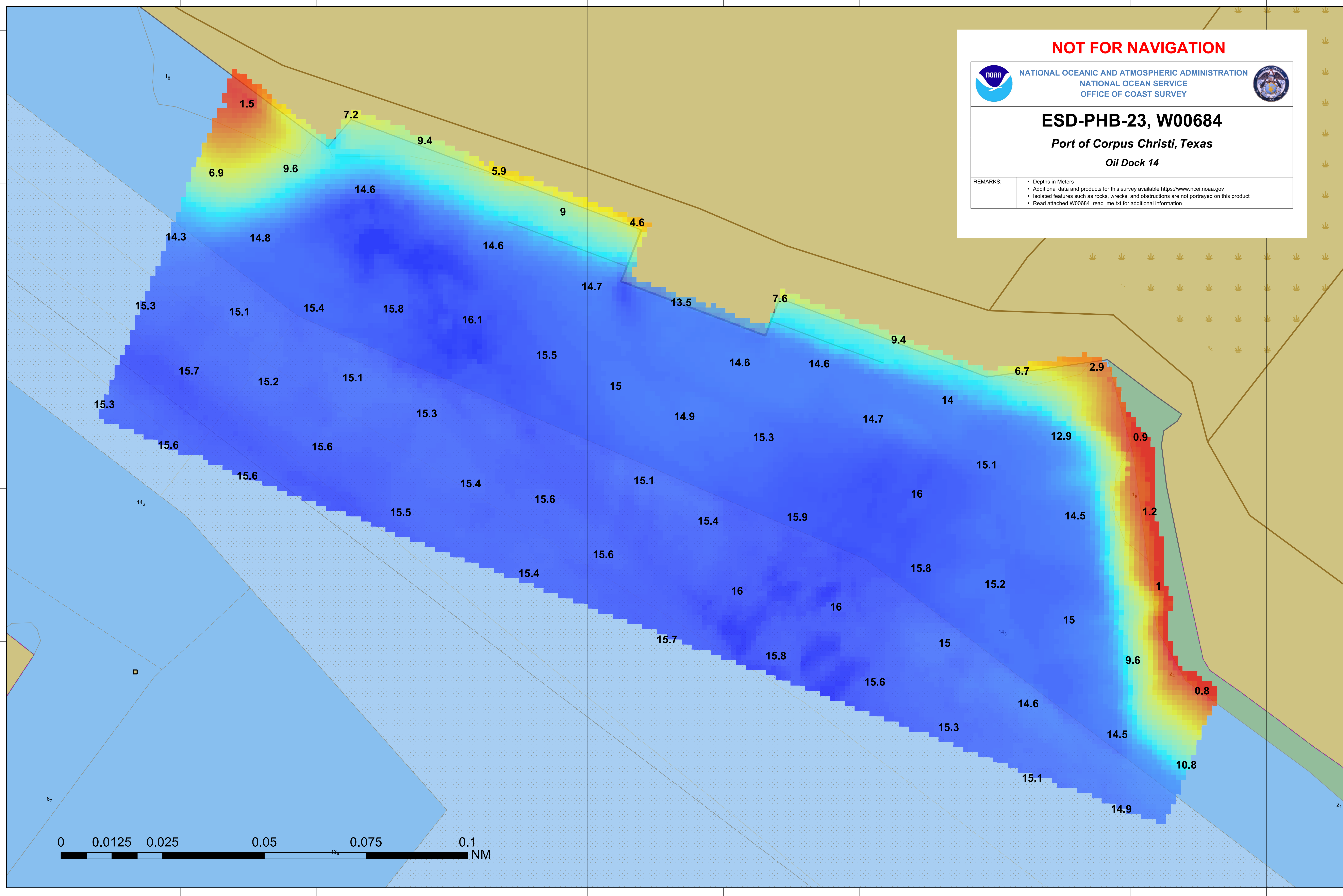
Oil Dock 14

REMARKS:

- Depths in Meters
- Additional data and products for this survey available <https://www.ncei.noaa.gov>
- Isolated features such as rocks, wrecks, and obstructions are not portrayed on this product
- Read attached W00684_read_me.txt for additional information

27°49'50"N

27°49'50"N



97°29'40"W

97°29'30"W