

NOT FOR NAVIGATION



NATIONAL OCEANIC AND ATMOSPHERIC ADMINISTRATION
NATIONAL OCEAN SERVICE
OFFICE OF COAST SURVEY



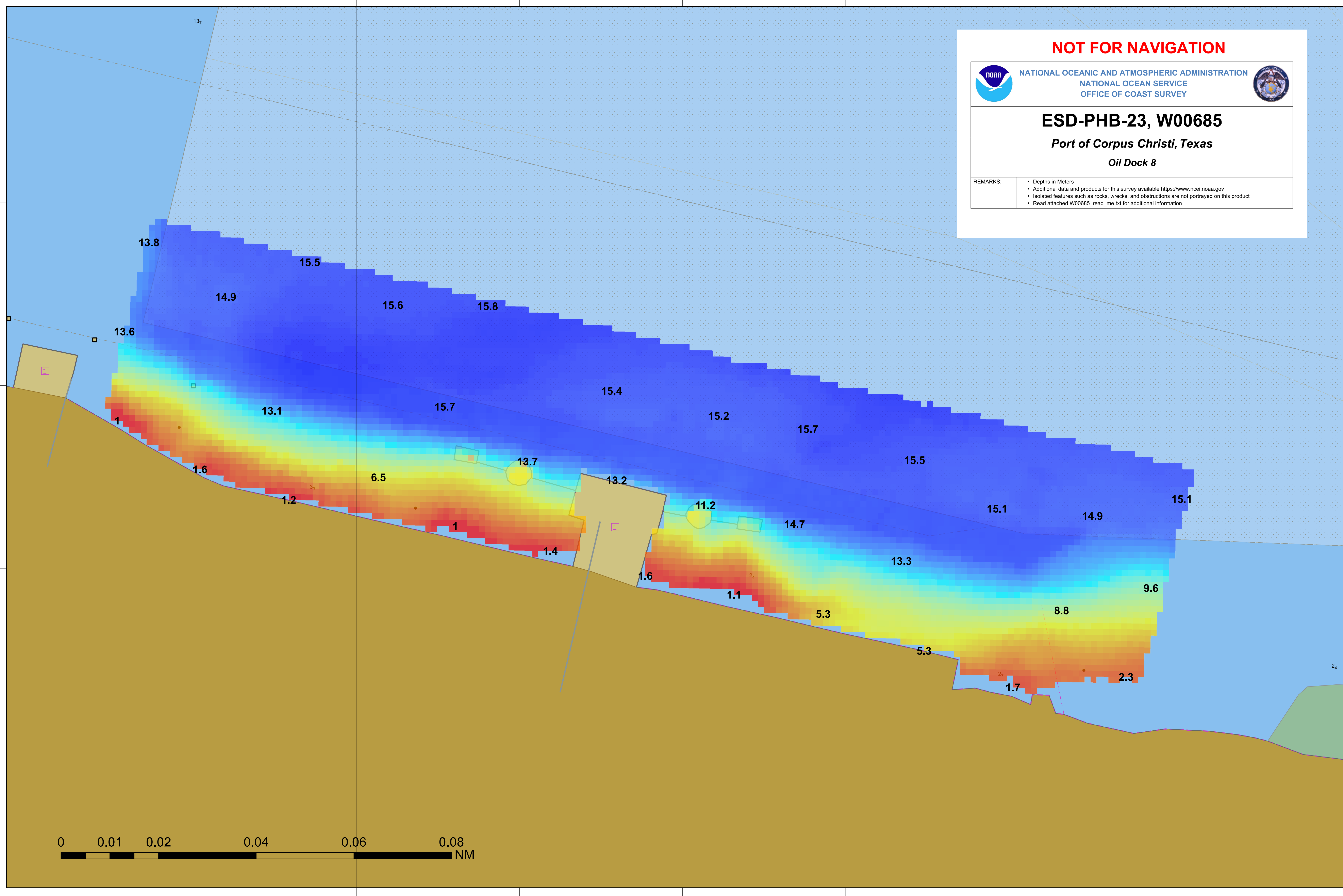
ESD-PHB-23, W00685

Port of Corpus Christi, Texas

Oil Dock 8

REMARKS:

- Depths in Meters
- Additional data and products for this survey available <https://www.ncei.noaa.gov>
- Isolated features such as rocks, wrecks, and obstructions are not portrayed on this product
- Read attached W00685_read_me.txt for additional information



27°50'30"N

27°50'30"N

97°31'20"W

97°31'10"W

