

97°24'20"W

97°24'15"W

97°24'10"W

97°24'5"W

97°24'0"W

**NOT FOR NAVIGATION**



NATIONAL OCEANIC AND ATMOSPHERIC ADMINISTRATION  
NATIONAL OCEAN SERVICE  
OFFICE OF COAST SURVEY



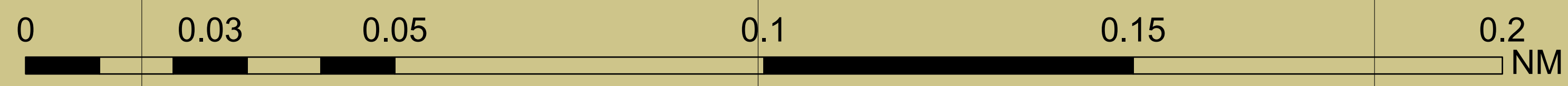
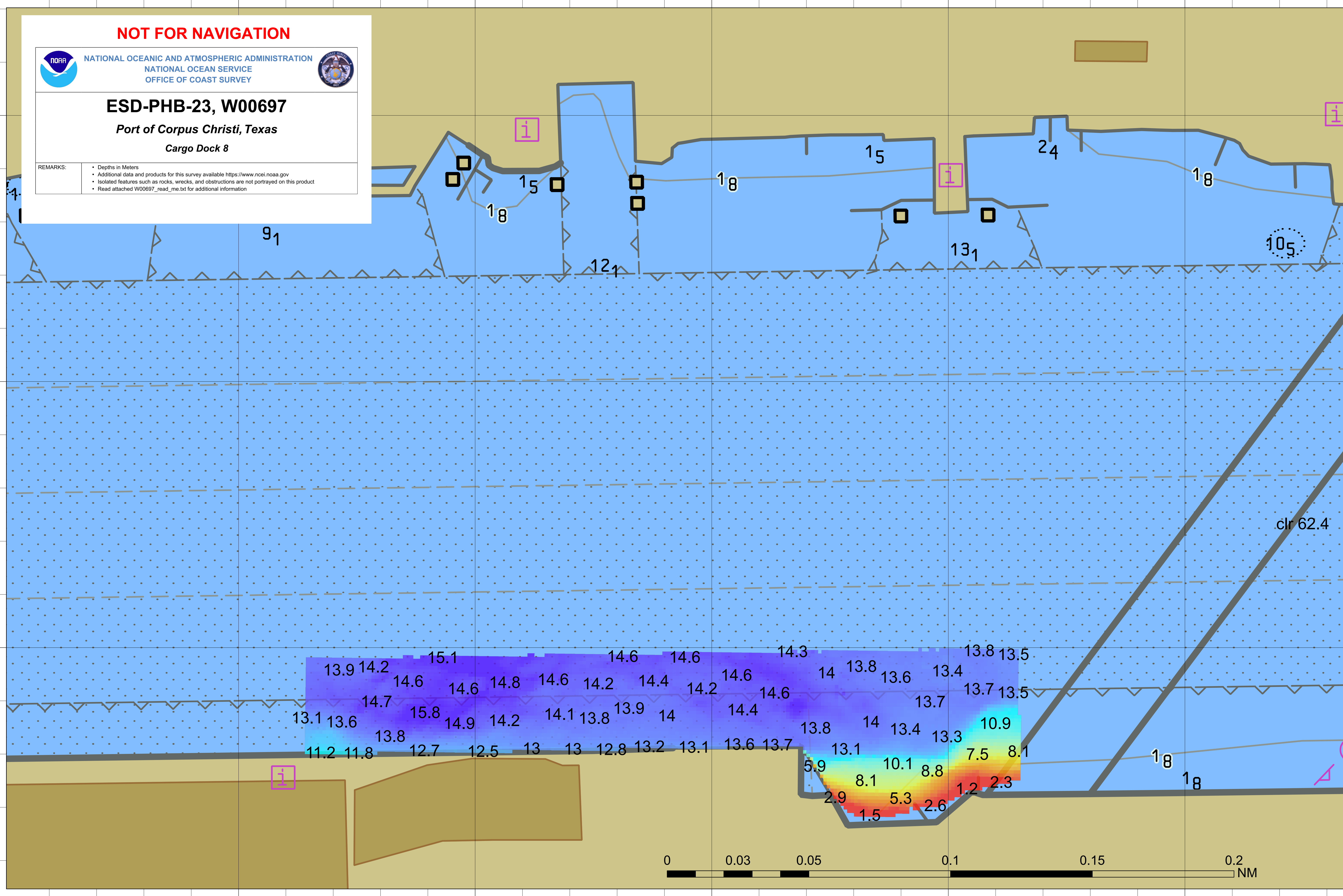
**ESD-PHB-23, W00697**

*Port of Corpus Christi, Texas*

*Cargo Dock 8*

REMARKS:

- Depths in Meters
- Additional data and products for this survey available <https://www.ncei.noaa.gov>
- Isolated features such as rocks, wrecks, and obstructions are not portrayed on this product
- Read attached W00697\_read\_me.txt for additional information



97°24'20"W

97°24'15"W

97°24'10"W

97°24'5"W

97°24'0"W

27°48'55"N

27°48'50"N

27°48'45"N

27°48'55"N

27°48'50"N

27°48'45"N