


97°27'40"W

97°27'30"W


27°49'10"N

27°49'10"N

NOT FOR NAVIGATION

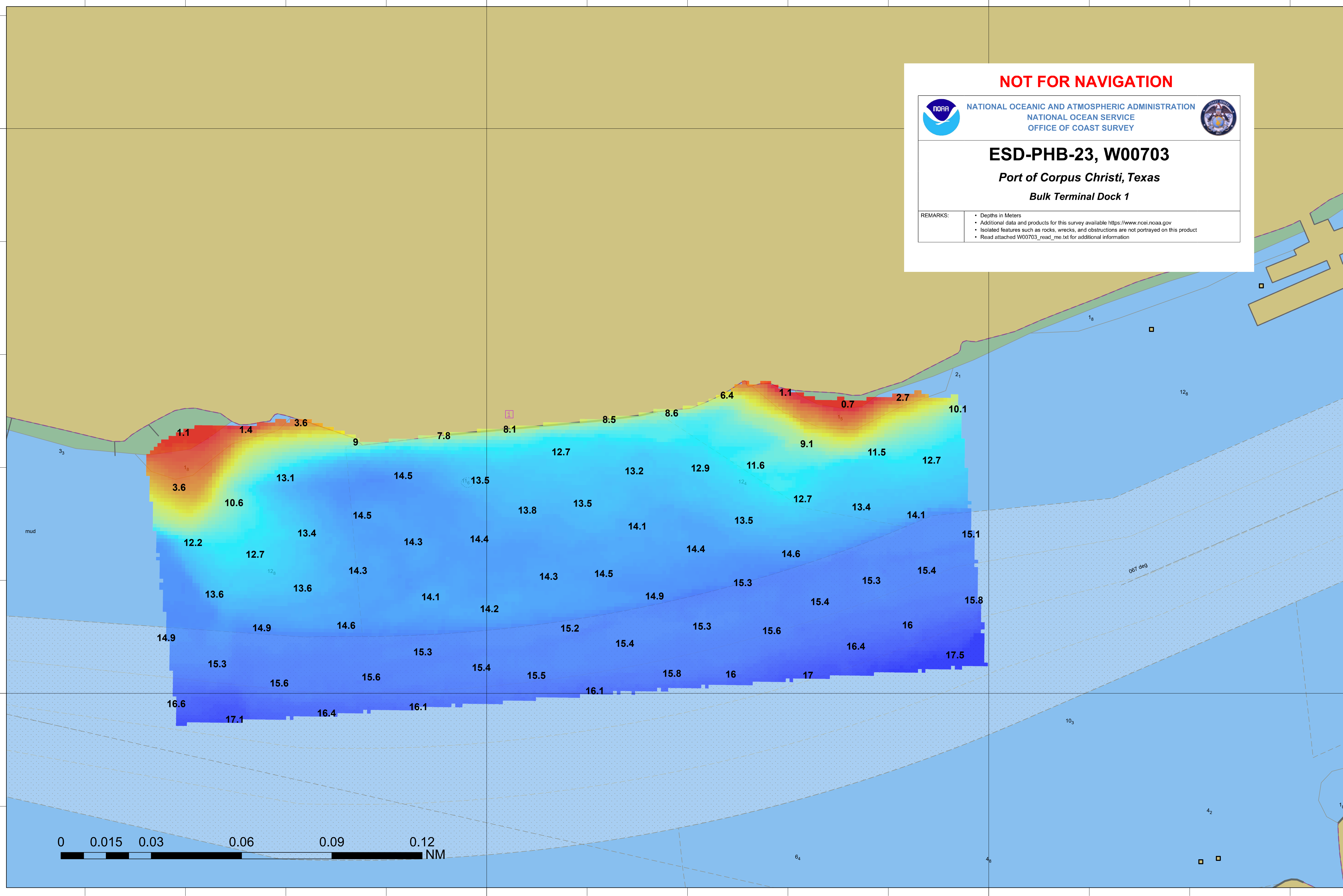


NATIONAL OCEANIC AND ATMOSPHERIC ADMINISTRATION
NATIONAL OCEAN SERVICE
OFFICE OF COAST SURVEY



ESD-PHB-23, W00703
Port of Corpus Christi, Texas
Bulk Terminal Dock 1

REMARKS:	<ul style="list-style-type: none"> • Depths in Meters • Additional data and products for this survey available https://www.ncei.noaa.gov • Isolated features such as rocks, wrecks, and obstructions are not portrayed on this product • Read attached W00703_read_me.txt for additional information
----------	--



27°49'00"N

27°49'00"N

97°27'40"W

97°27'30"W

0 0.015 0.03 0.06 0.09 0.12 NM