

170°17'30"W

170°17'0"W

170°16'30"W

**NOT FOR NAVIGATION**



NATIONAL OCEANIC AND ATMOSPHERIC ADMINISTRATION  
NATIONAL OCEAN SERVICE  
OFFICE OF COAST SURVEY



### ESD-AHB-23, W00708

*Pribilof Islands, Alaska*

*St Paul Island*

REMARKS:

- Depths in Meters
- Additional data and products for this survey available <https://www.ncei.noaa.gov>
- Isolated features such as rocks, wrecks, and obstructions are not portrayed on this product
- Read attached W00708\_read\_me.txt for additional information

57°8'30"N

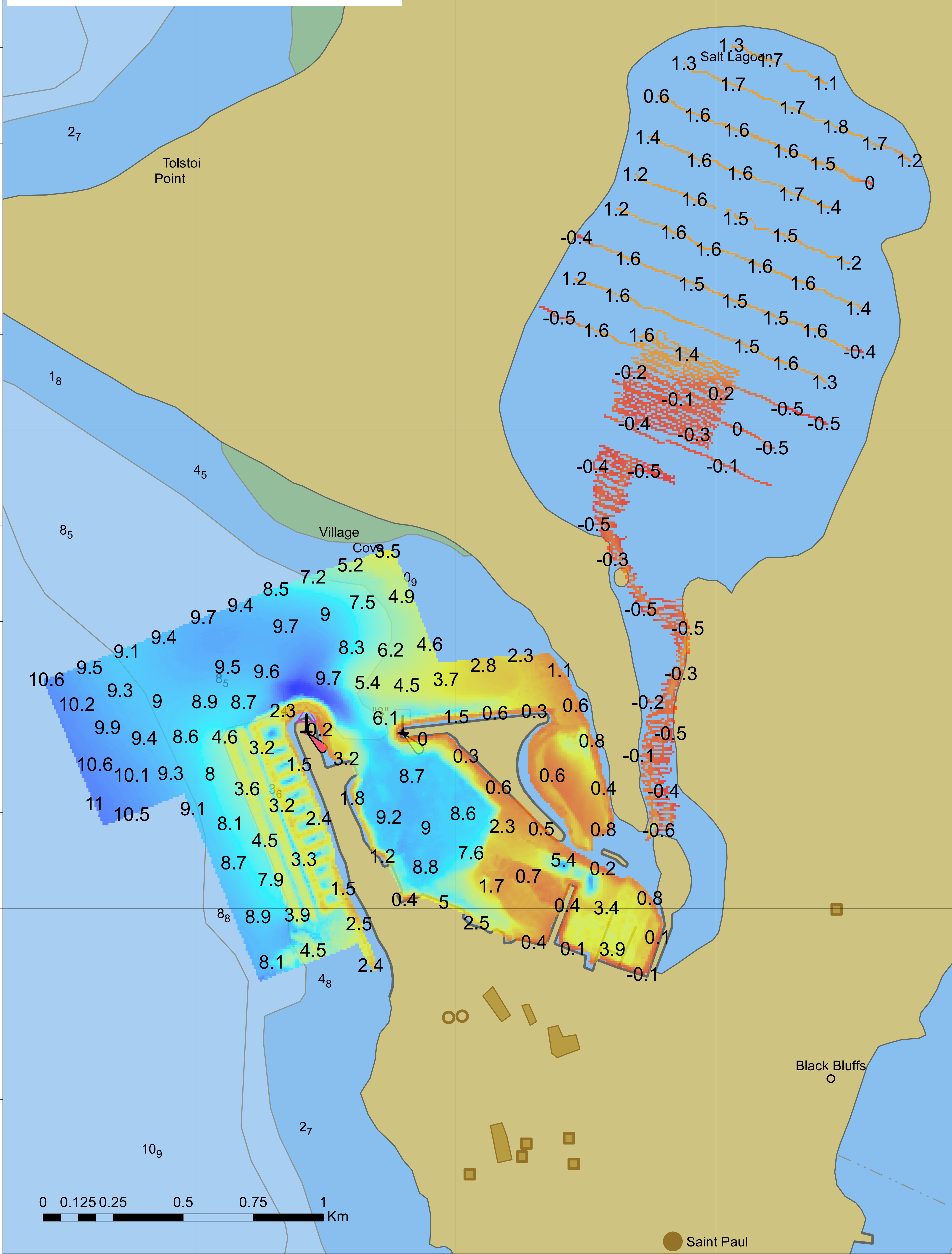
57°8'30"N

57°8'0"N

57°8'0"N

57°7'30"N

57°7'30"N



0 0.125 0.25 0.5 0.75 1 Km

● Saint Paul

170°17'30"W

170°17'0"W

170°16'30"W