

69°49'0"W

69°48'45"W

43°54'30"N

43°54'30"N

43°54'15"N

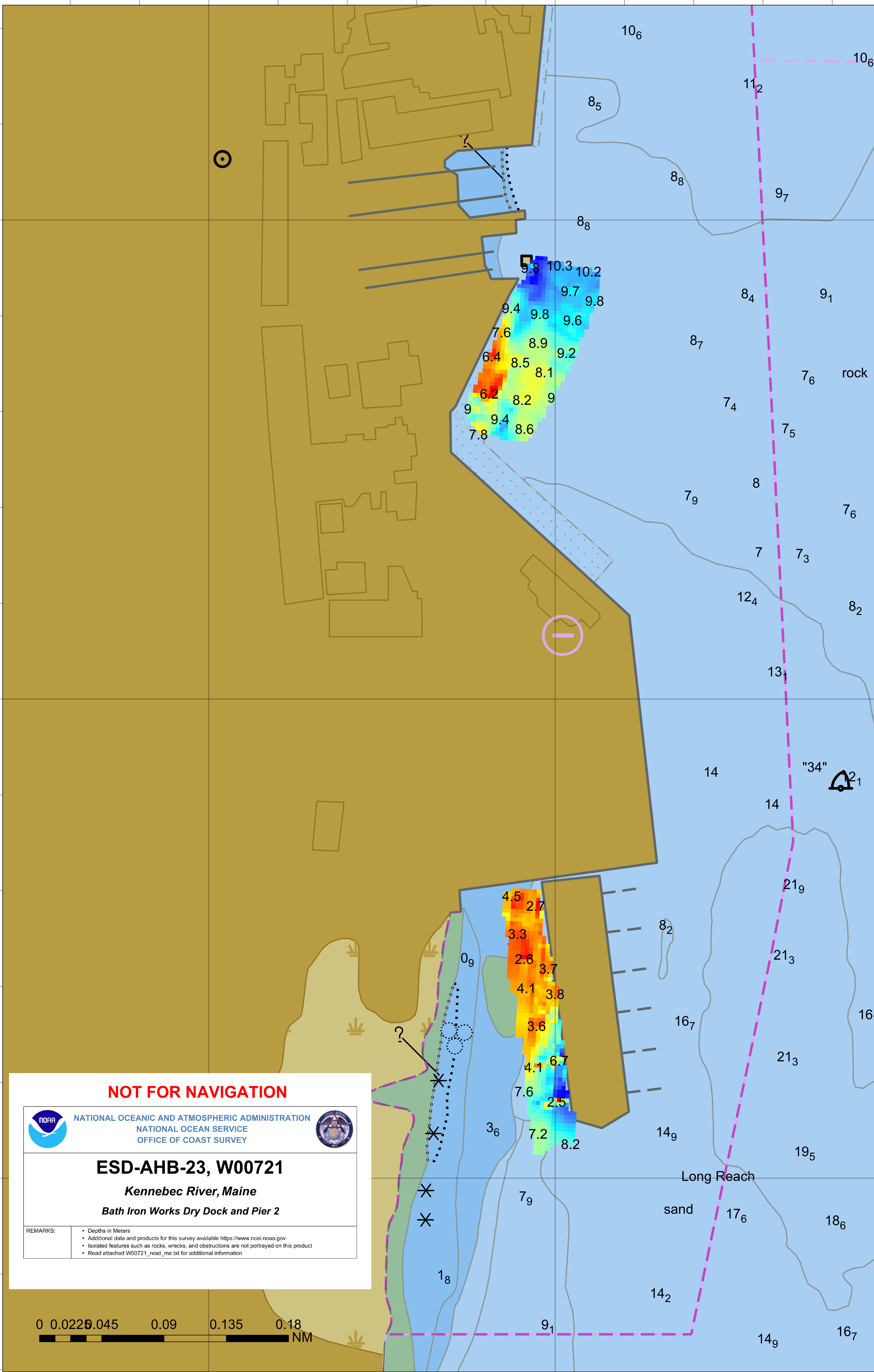
43°54'15"N

43°54'0"N

43°54'0"N

69°49'0"W

69°48'45"W



NOT FOR NAVIGATION



NATIONAL OCEANIC AND ATMOSPHERIC ADMINISTRATION
NATIONAL OCEAN SERVICE
OFFICE OF COAST SURVEY



ESD-AHB-23, W00721

Kennebec River, Maine

Bath Iron Works Dry Dock and Pier 2

REMARKS:

- Depths in Meters
- Additional data and products for this survey available <https://www.ncei.noaa.gov>
- Isolated features such as rocks, wrecks, and obstructions are not portrayed on this product
- Read attached W00721_read_me.txt for additional information

