

***Report and Index of  
Underway Marine Geophysical Data***

**Cook Expedition**

**Leg 18**

**(COOK18MV)**

R/V Melville

(Issued April 2002)

**Ports:**

Papeete, Tahiti (04 January 2002)  
to  
Lyttleton, New Zealand ( 12 January 2002)

**No Chief Scientist: Transit Leg**

Computer Tech - John Chatwood

Post-Cruise processing and report preparation by  
Shipboard Technical Support Group,  
Scripps Institution of Oceanography  
La Jolla, CA 92093-0223

**NOTE:** This is an index of underway geophysical data edited and processed after the completion of the cruise leg and is intended primarily for informal use within the institution. This document is not to be reproduced or distributed outside Scripps without prior approval of the chief scientist or the Shipboard Technical Support Group, Scripps Institution of Oceanography, La Jolla, California 92093-0223.

GDC Cruise ID# 295

***Report and Index of Navigation  
and Underway Geophysical Data***

Processed by the Shipboard Technical Support Group  
Scripps Institution of Oceanography

**Contents:**

**Index Chart** – gives track of cruise leg, dates, ports, and mileage of each type of data collected.

**Track Charts**– annotated with dates and hour ticks

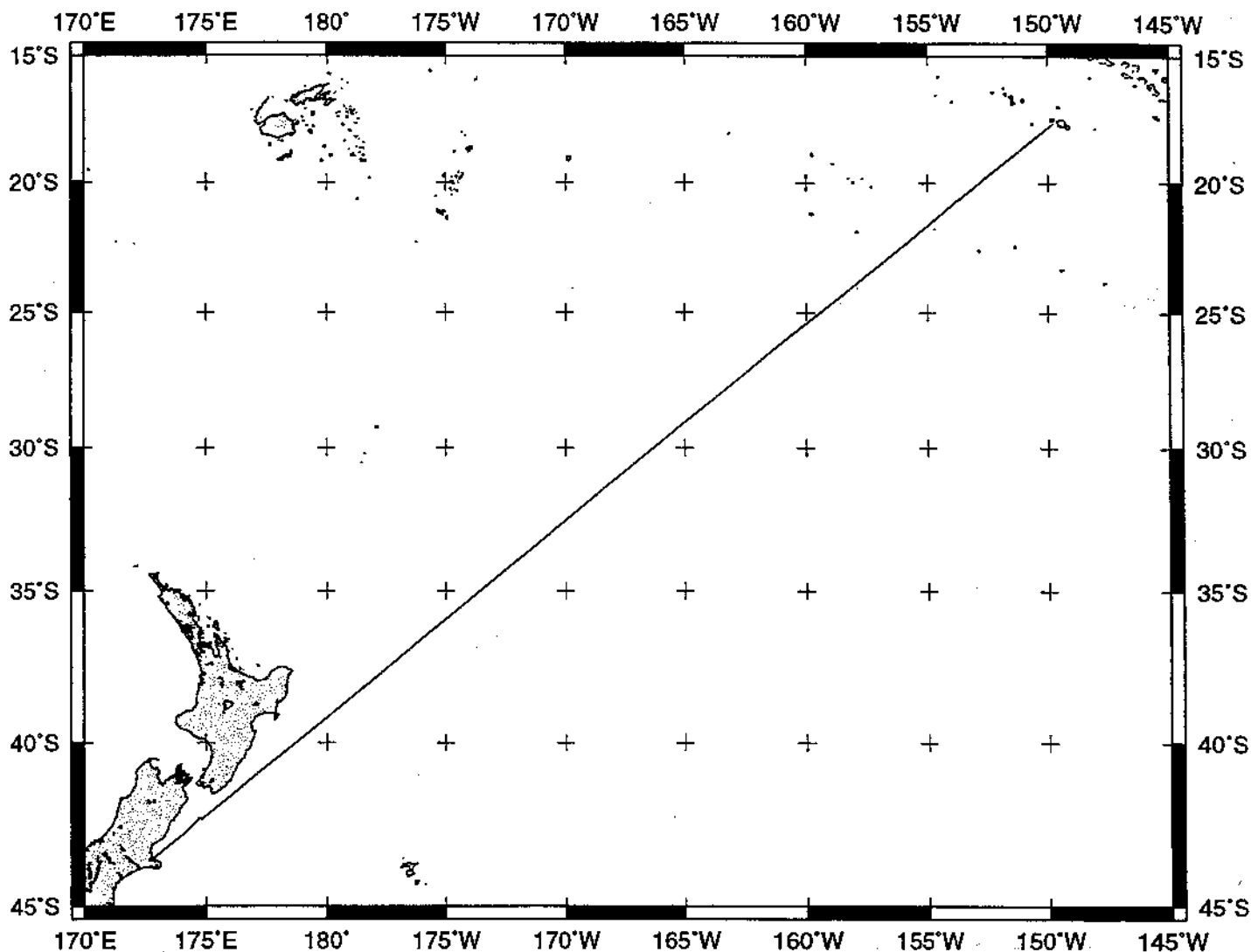
**Profiles** – depth, magnetic and gravity free air anomaly vs. distance. (Sections of track with seismic reflection data have a wide black line along the bottom of the profile.)

**Sample Index** – list of begin/end times and positions of all underway records as well as samples and measurements from other disciplines collected on the leg.

**NOTE:**

For information on the availability of this current digital data as well as archived digital data contact Stephen P. Miller, Geological Data Center, Scripps Institution of Oceanography, La Jolla, California 92093-0220 Phone: (858)534-1898, internet email: [spmiller@ucsd.edu](mailto:spmiller@ucsd.edu); or his Website: <http://SIOExplorer@ucsd.edu>

Rev 6/2001



**COOK EXPEDITION LEG 18 (COOK18MV)**

**CHIEF SCIENTIST:** No Chief Scientist: Transit leg

**PORTS:** Papeete, Tahiti - Lyttleton, New Zealand

**DATES:** 4 - 12 January 2002

**SHIP:** R/V Melville

**TOTAL MILEAGE OF UNDERWAY DATA COLLECTED**

**Cruise-**2465 miles

**Magnetics-**1625 miles

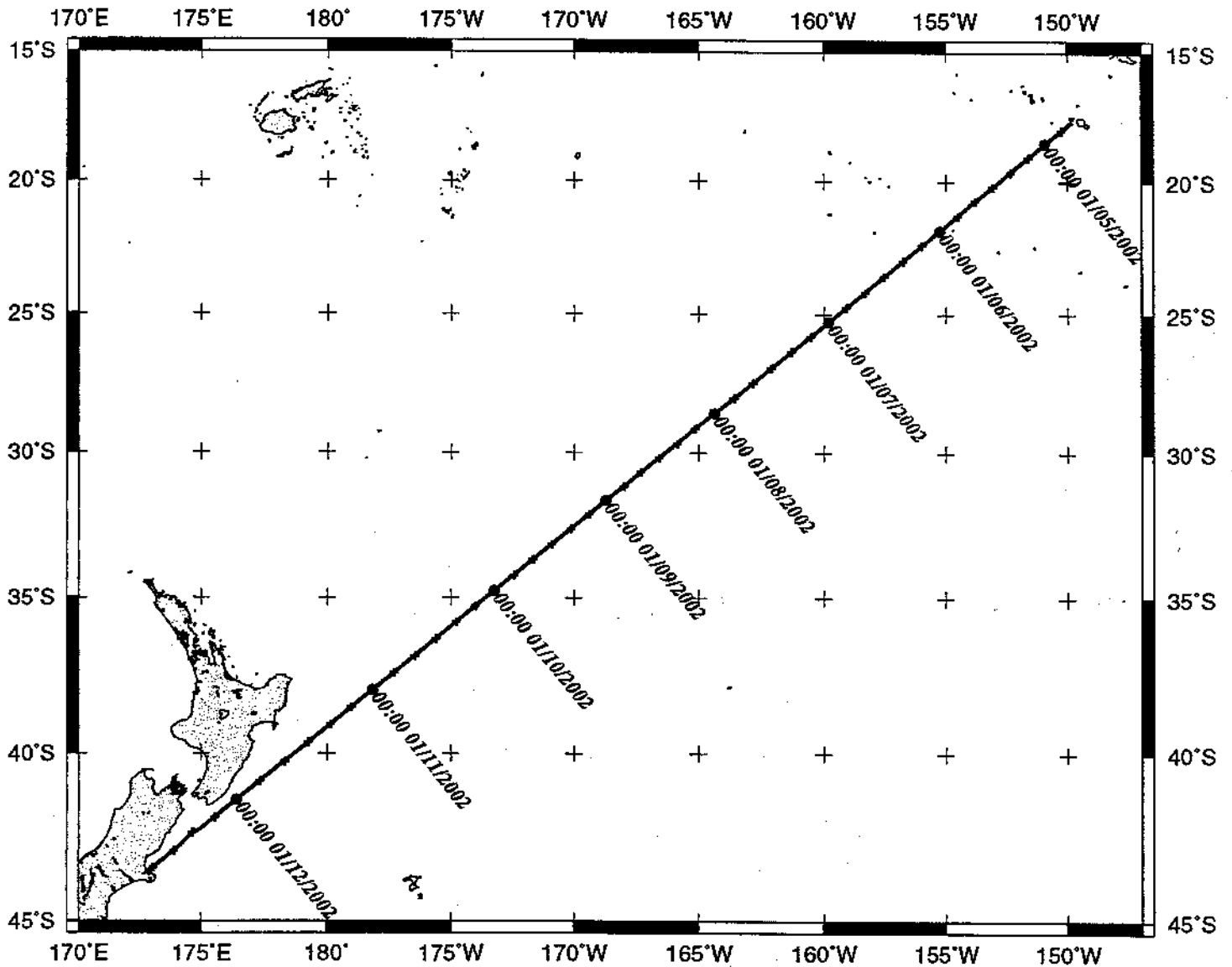
**Bathymetry-**1769 miles

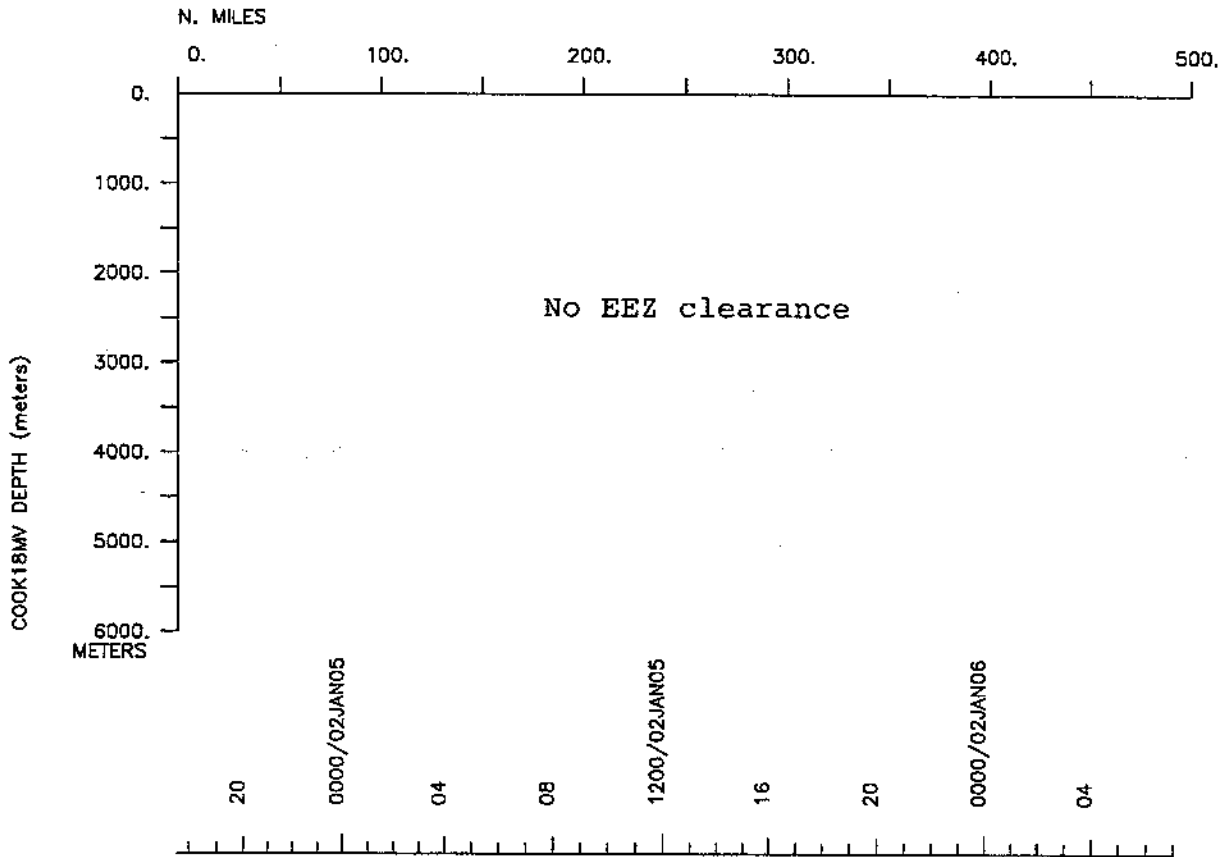
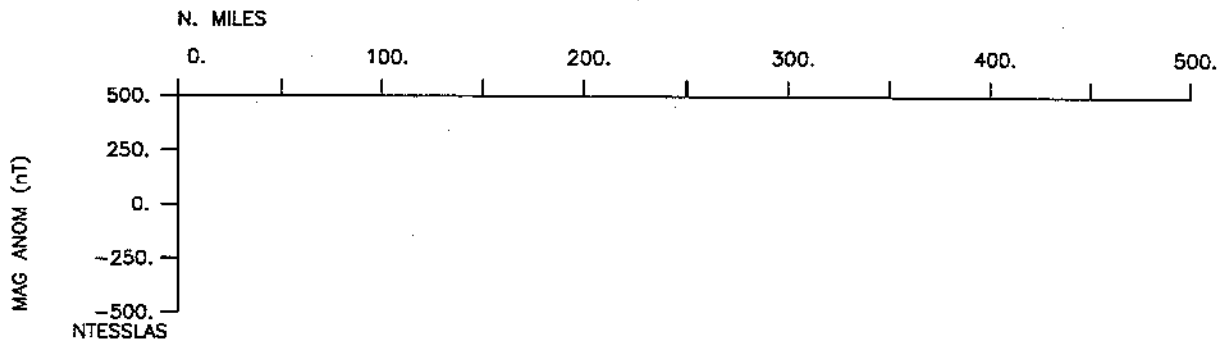
**Seismic Reflection-**none collected

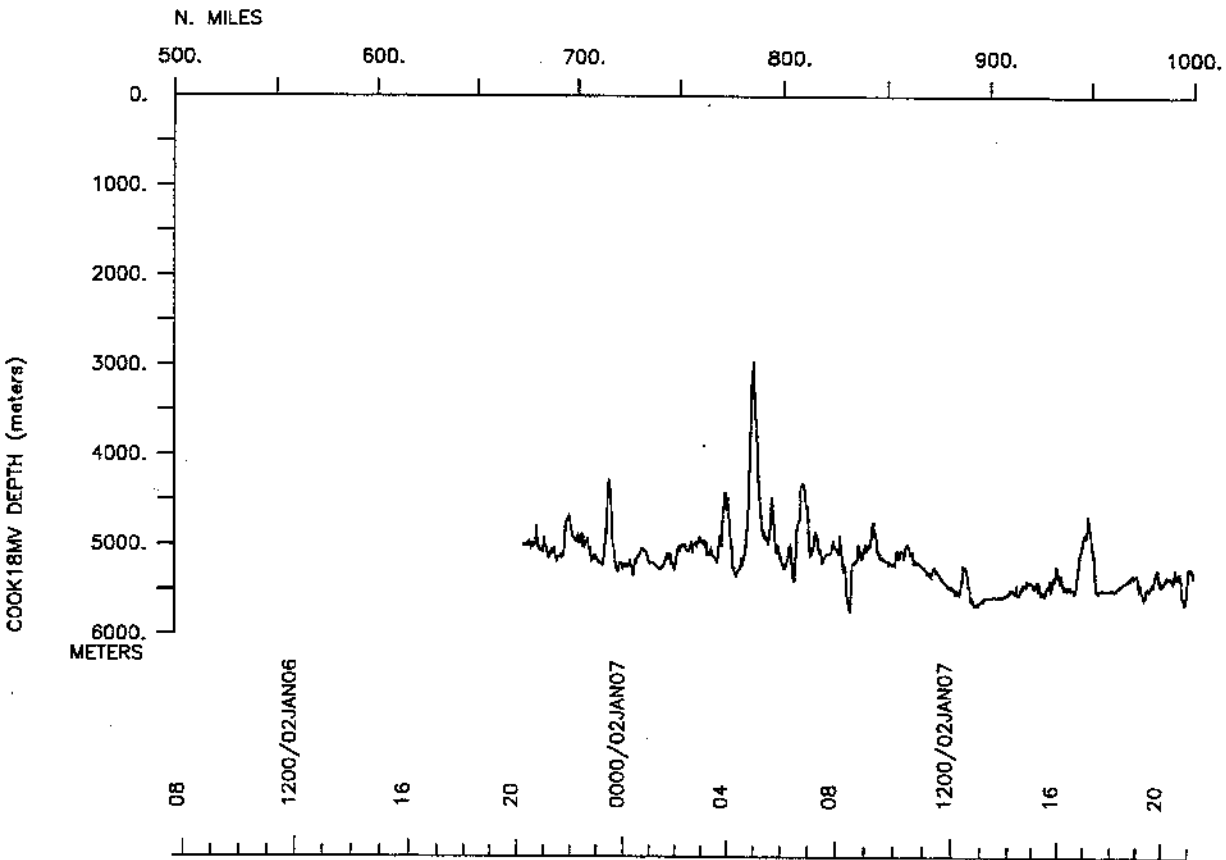
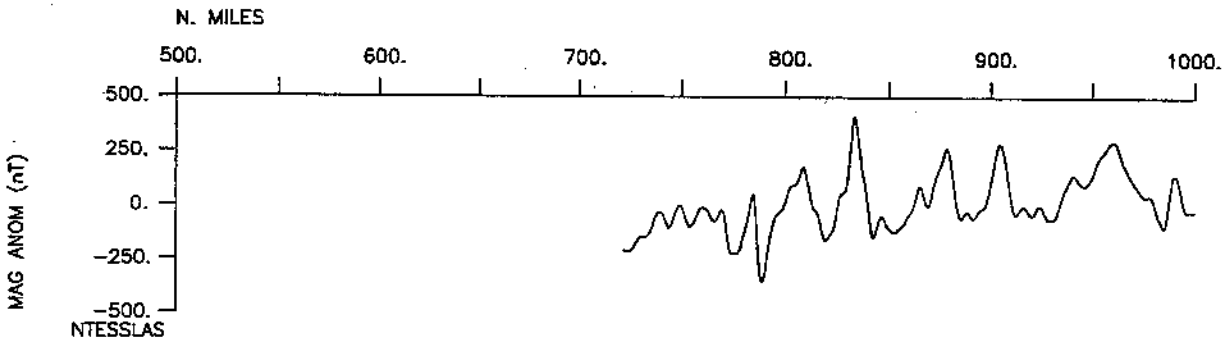
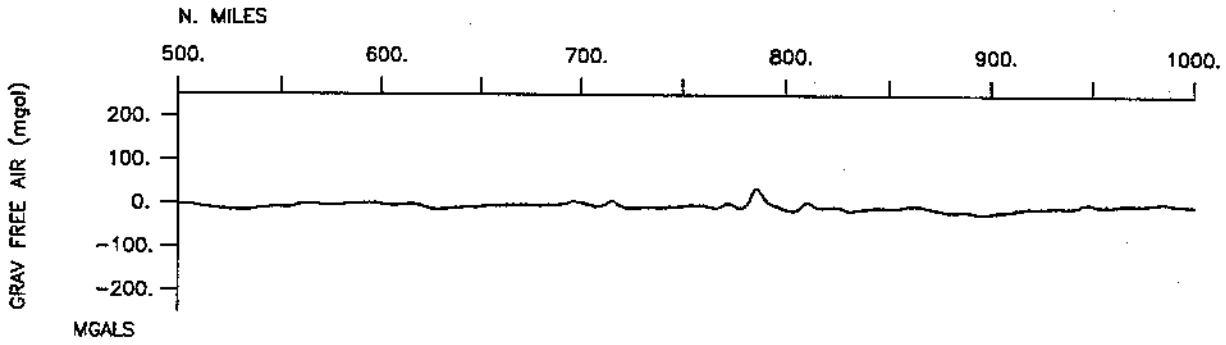
**Sea Beam-**1769 miles

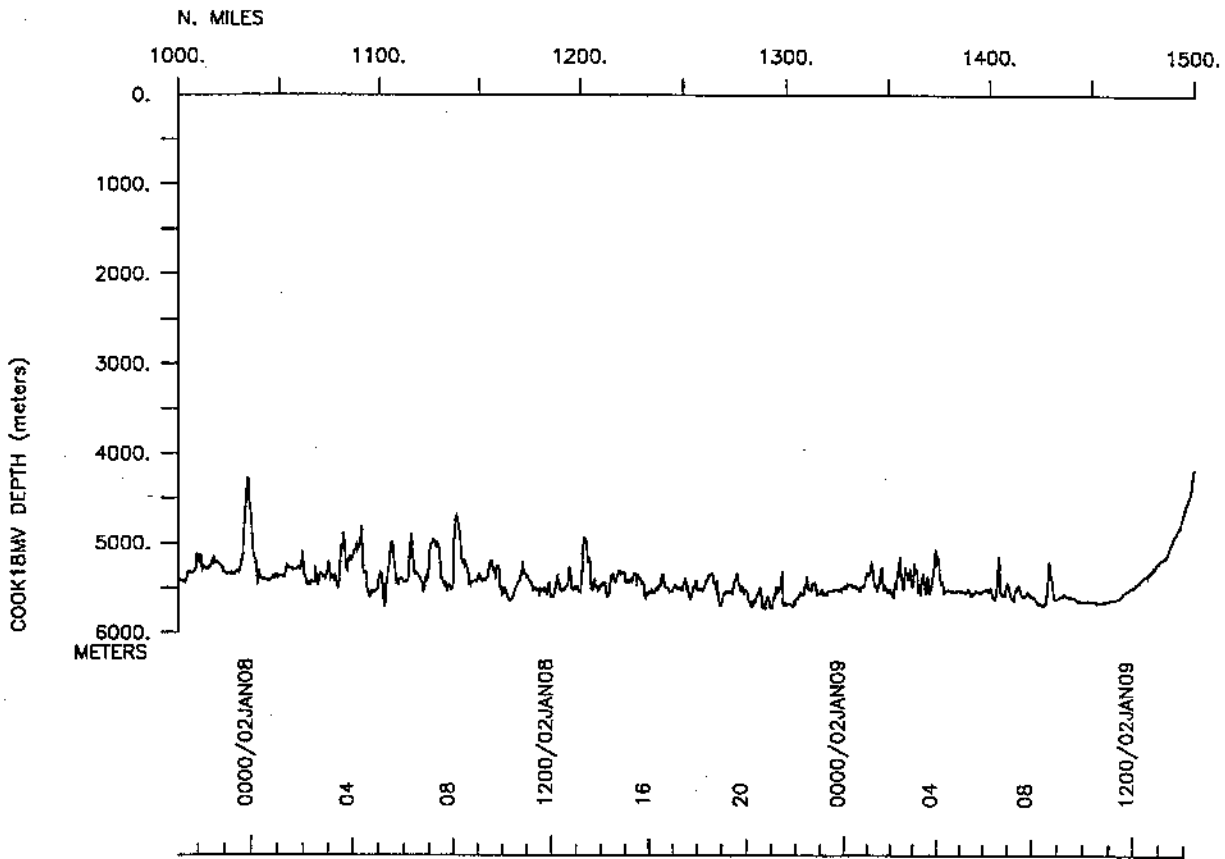
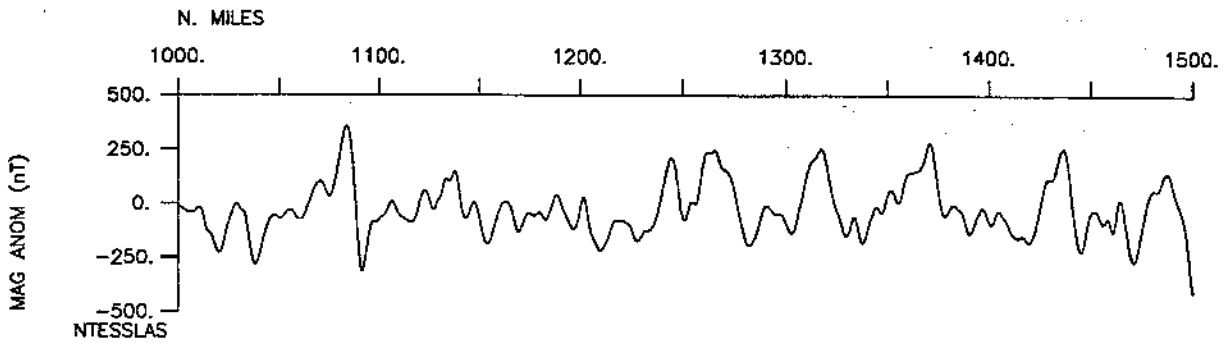
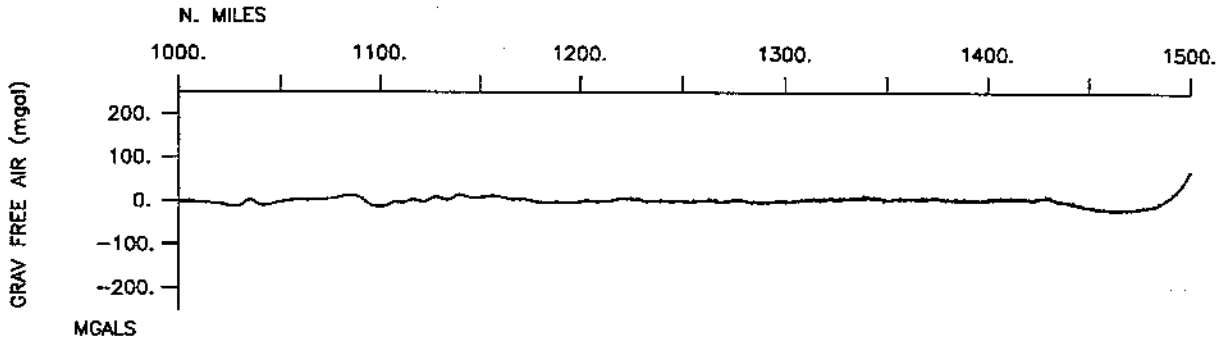
**Gravity-**2465 miles

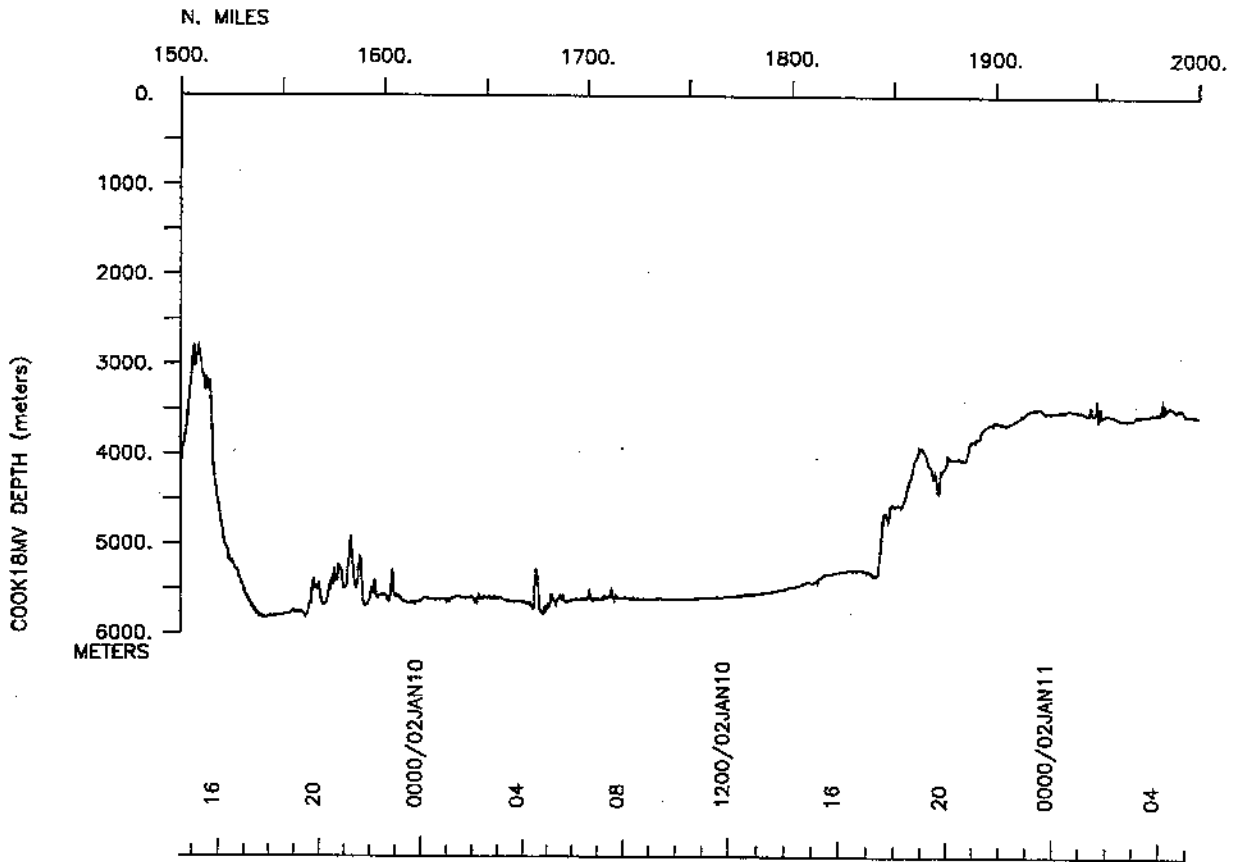
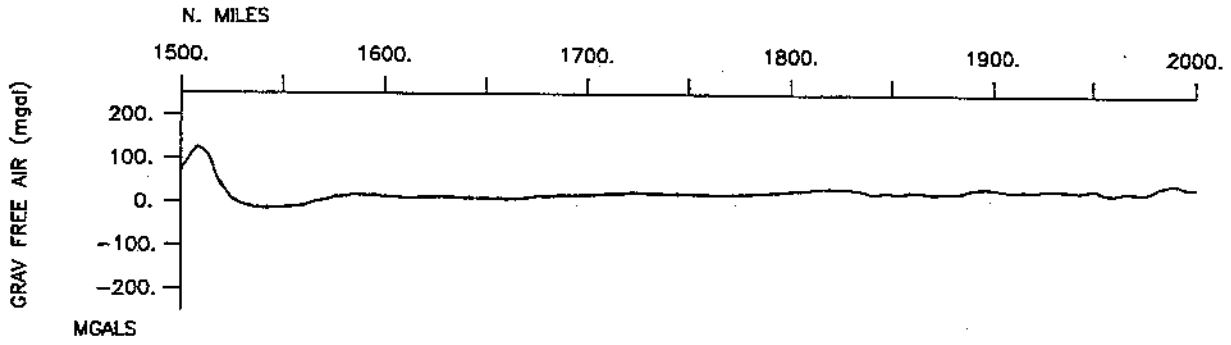
# COOK18MV



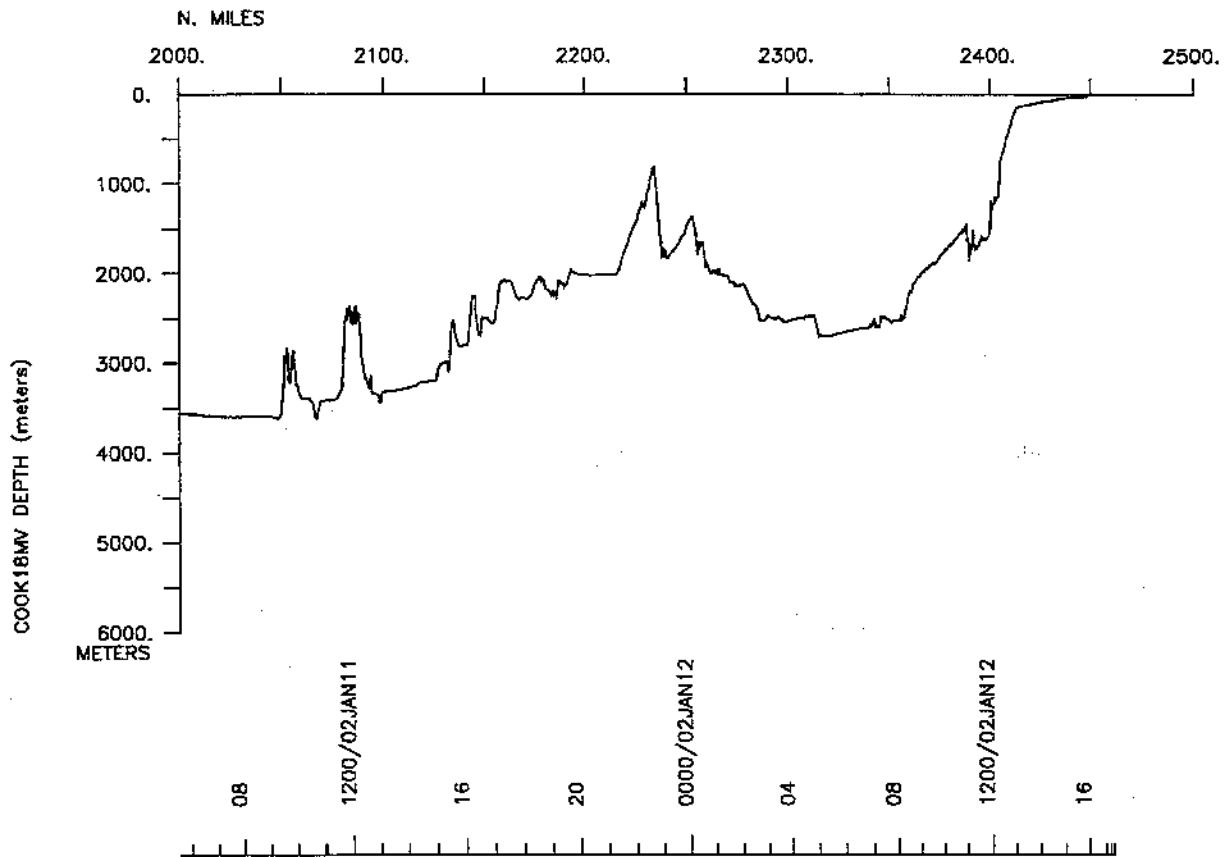
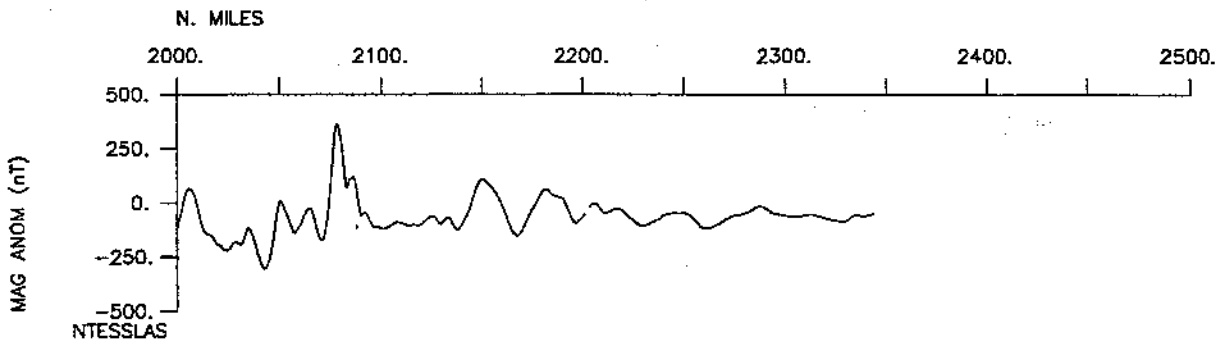
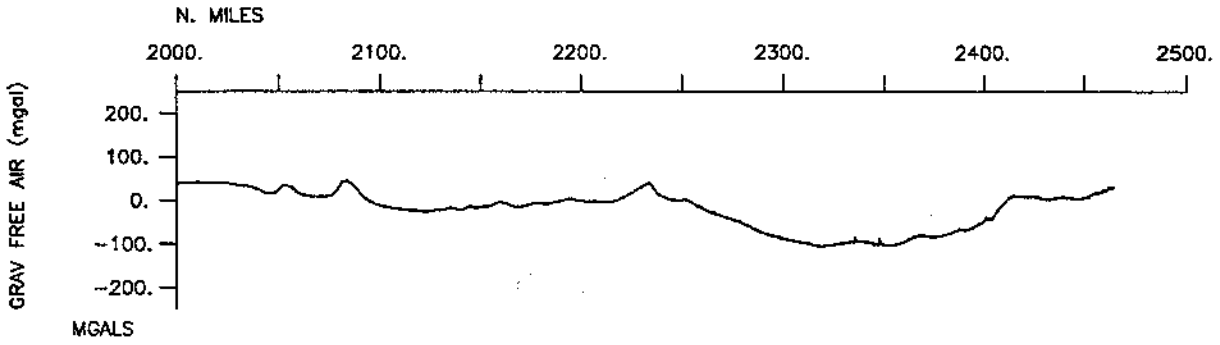












**S.I.O. Sample Index**

**COOK Expedition**

**Leg 18**

**(COOK18MV)**

R/V Melville

(Issued April 2002)

**PORTS:**

Papeete, Tahiti (04 January 2002)

to

Lyttleton, New Zealand (12 January 2002)

**No Chief Scientist : Transit Leg**

*The Sample Index is a first level interdisciplinary listing of time, position, sample identification and disposition of all samples, records and measurements collected on this cruise leg. The index data are encoded at sea by the resident marine technician and processed on shore by the S.I.O. Shipboard Technical-Support Group shortly after the completion of the cruise leg.*

*Positions are interpolated on the basis of sample time by comparison to a single, edited navigation file. Samples beginning at one time and position and ending at another are entered on two consecutive lines. Disposition and sample type are represented by three and four character codes to permit future computer searches on these parameters. (Listings defining these codes are available from the Shipboard Technical Support Group.)*

GDC Cruise ID# 295

\*\*\*\* Ports \*\*\*

1733	040102	0	LGPT B	Papeete, Tahiti	17-36.00S	148-59.00W	f	COOK18MV
1936	120102	0	LGPT E	Lyttleton, New Zealand	43-36.00S	172-43.00E	f	COOK18MV

\*\*\*\* Personnel \*\*\*

#	*****NAME*****	*****TITLE*****	*****AFFILIATION*****	**CRID**
PECT STS	Chatwood, J.	Computer Tech	Scripps Institution	COOK18MV

\*\*\*\* NOTES \*\*\*

#An 'X' in the (B)egin/(E)nd column following the sample code indicates no sample or data recovered. A 'C' indicates continuation of data collection from before the beginning or after the end of a particular leg, (moored bottom instruments, for example.) The number appearing in the columns between the sample identifier and the disposition code, for many sample entries, is the water depth in corrected meters.

#GMT	DDMMYY	SAMP	B	SAMPLE	DISP			p	CRUISE
#TIME	DATE	TZ	CODE	E IDENTIFIER	CODE	LATITUDE	LONGITUDE	c	LEG-SHIP

\*\*\*\* Underway Data Curator - Shipboard Technical Support Group ext.41899 \*\*\*  
 \*\*\*\* Digital Data Curator - Geological Data Center, S.P. Miller, ext.41898 \*\*\*

\*\*\*\* MultiBeam Data (vertical beam and side scan) \*\*\*

2012	060102	0	MBSR B	Seabeam(v.beam&ss)	GDC	24-46.43S	159-06.86W	g	COOK18MV
1559	120102	0	MBSR E	Seabeam(v.beam&ss)	GDC	43-27.41S	173-01.48E	g	COOK18MV

\*\*\*\* Digital Magnetic Data \*\*\*

2355	060102	0	MGDD B	Digital Magnetics	GDC	25-17.22S	159-48.39W	g	COOK18MV
0729	120102	0	MGDD E	Digital Magnetics	GDC	42-20.94S	174-44.45E	g	COOK18MV

\*\*\*\* Digital Gravity \*\*\*

1735	040102	0	GVDD B	Digital Gravity	GDC	17-40.53S	149-47.79W	g	COOK18MV
1931	120102	0	GVDD E	Digital Gravity	GDC	43-36.20S	172-48.00E	g	COOK18MV

\*\*\*\* Integrated Meteorological Acquisition System \*\*\*

1733	040102	0	IMET B	weather measurements	GDC	17-40.53S	149-47.79W	g	COOK18MV
1936	120102	0	IMET E	weather measurements	GDC	43-36.36S	172-47.03E	g	COOK18MV

\*\*\*\* Acoustic Doppler Current Profiler \*\*\*

1733	040102	0	ADCP B	300kHz current meas.	GDC	17-40.53S	149-47.79W	g	COOK18MV
1936	120102	0	ADCP E	300kHz current meas.	GDC	43-36.36S	172-47.03E	g	COOK18MV

\*\*\*\* End Sample Index COOK18MV

