

*Report and Index of
Underway Marine Geophysical Data*

Vancouver Expedition

Leg 21

(VANC21MV)

R/V Melville

(Issued Apr 2004)

Ports:

Port Moresby, PNG (26-Jan-04)

to

Port Moresby, PNG (15-Feb-04)

Chief Scientist: Charles Nittrouer
Univ. of Washington
nittroue@ocean.washington.edu

Computer Tech - Steve Foley
Resident Tech - Geoff Ravenhill

Post-Cruise processing and report preparation by the
Shipboard Technical Support Group,
Scripps Institution of Oceanography
La Jolla, CA 92093-0214

Note: *This is an index of underway geophysical data edited and processed after the completion of the leg and is intended primarily for informal use within the institution. This document is not to be reproduced or distributed outside Scripps without prior approval of the chief scientist or Shipboard Technical Support, Scripps Institution of Oceanography, La Jolla, California 92093-0223*

STS Cruise ID#299

Report and Index of Navigation and Underway Geophysical Data

Contents:

Index Chart - give track of cruise leg, dates, ports.

Track Charts - annotated with dates and hour ticks.

Profiles - depth, magnetic and gravity free air anomaly vs. distance.

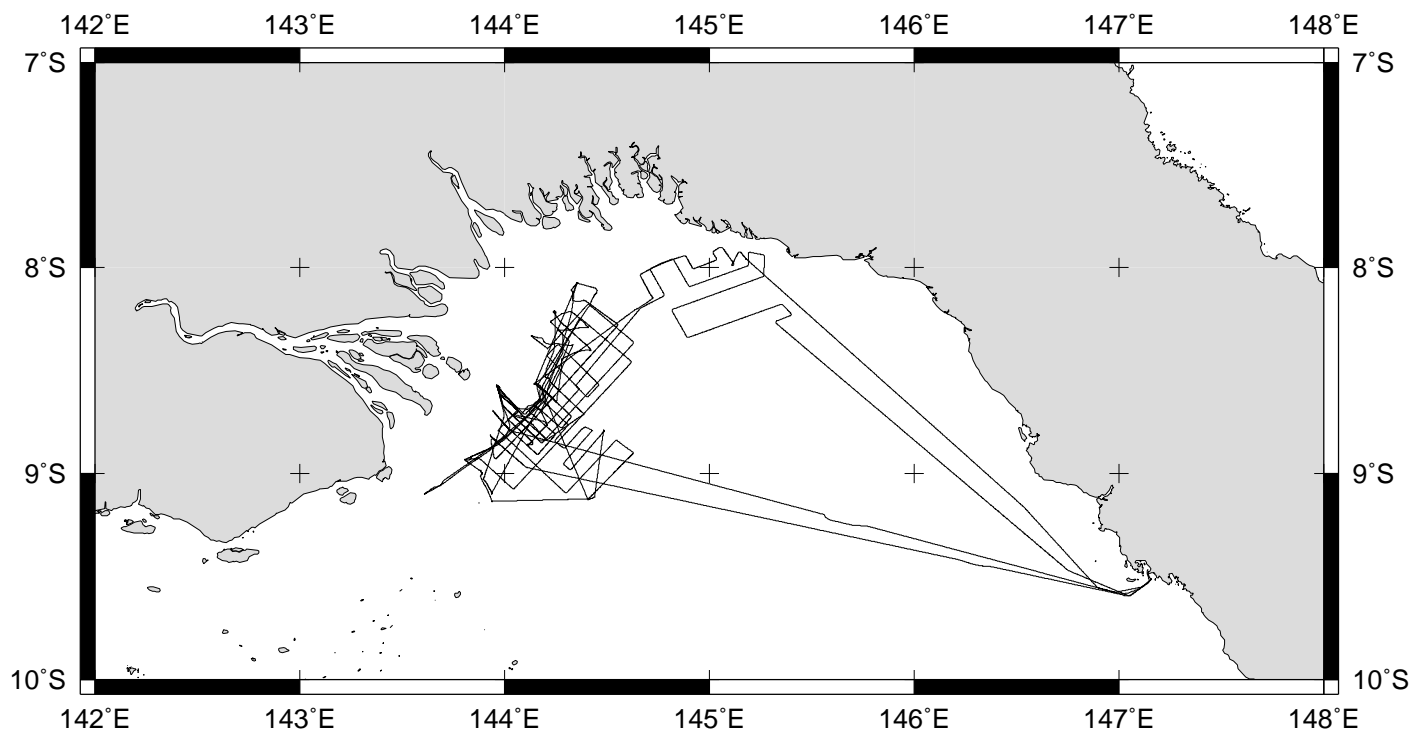
Sample Index - list of begin/end times and positions of all underway records as well as samples and measurements from other disciplines collected on the leg.

Note:

For information on the availability of this current digital data as well as archived digital data contact:

Stephen P. Miller
Geological Data Center
Scripps Institution of Oceanography
La Jolla, California 92093-0220
Phone: (858) 534-1898
Internet email: spmiller@ucsd.edu; or his website: <http://SIOExplorer@ucsd.edu>

Rev 05/2002



VANCOUVER EXPEDITION LEG 21 (VANC21MV)

=====

CHIEF SCIENTIST: Charles Nittrouer, University of Washington

PORTS: Port Moresby - Port Moresby, Papua New Guinea

DATES: 26 January - 15 February 2004

SHIP: R/V Melville

TOTAL MILEAGE OF UNDERWAY DATA COLLECTED

Cruise-2403 miles

Magnetics-none collected

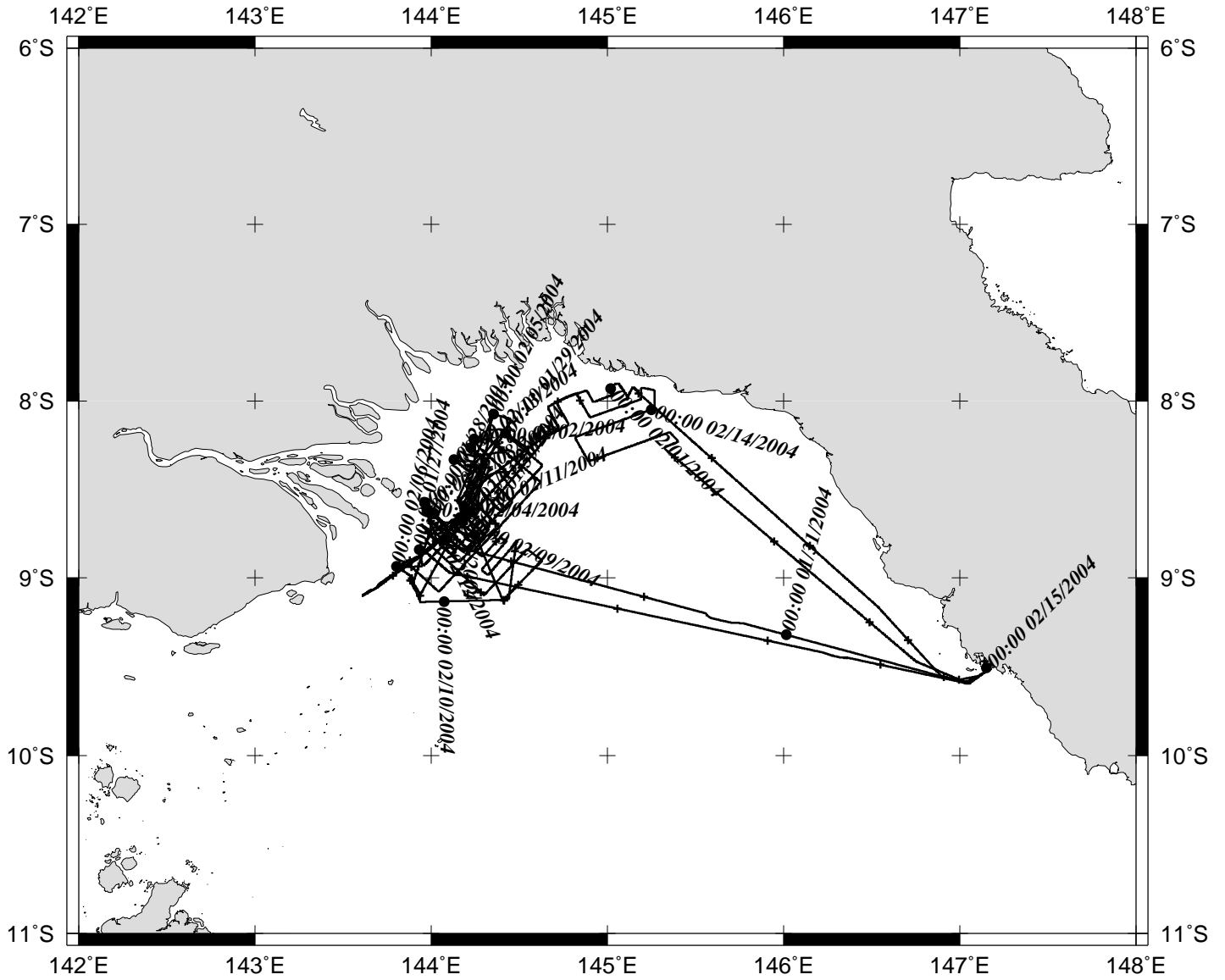
Bathymetry-540 miles

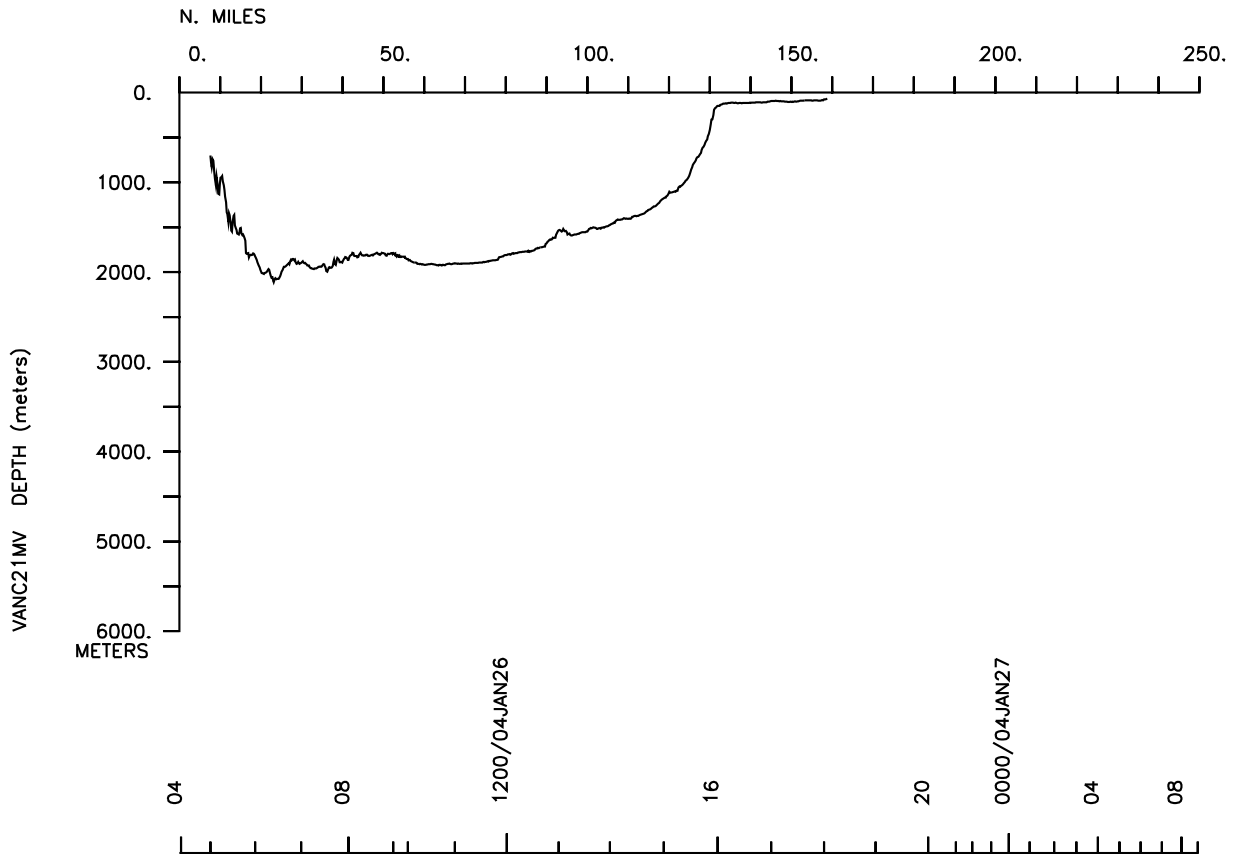
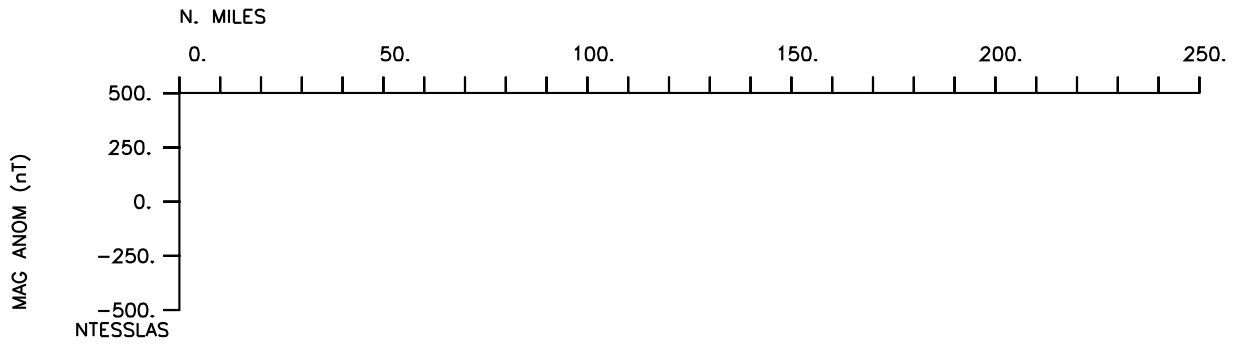
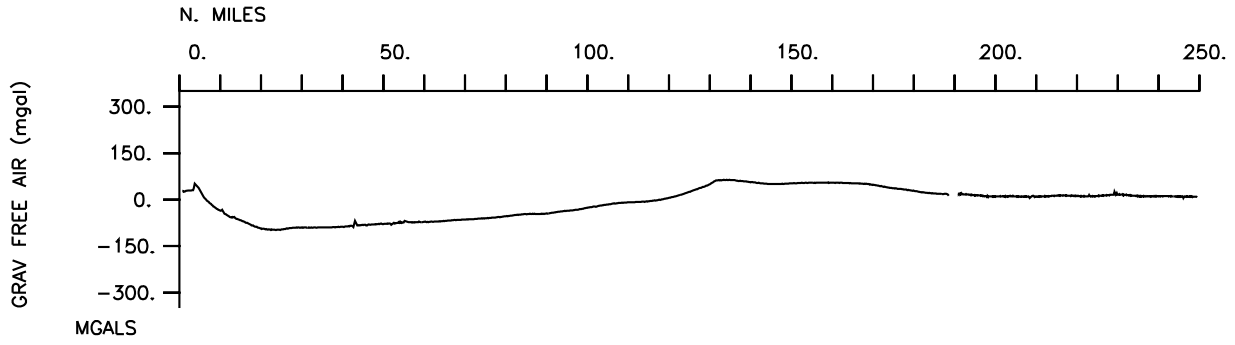
Seismic Reflection-none collected

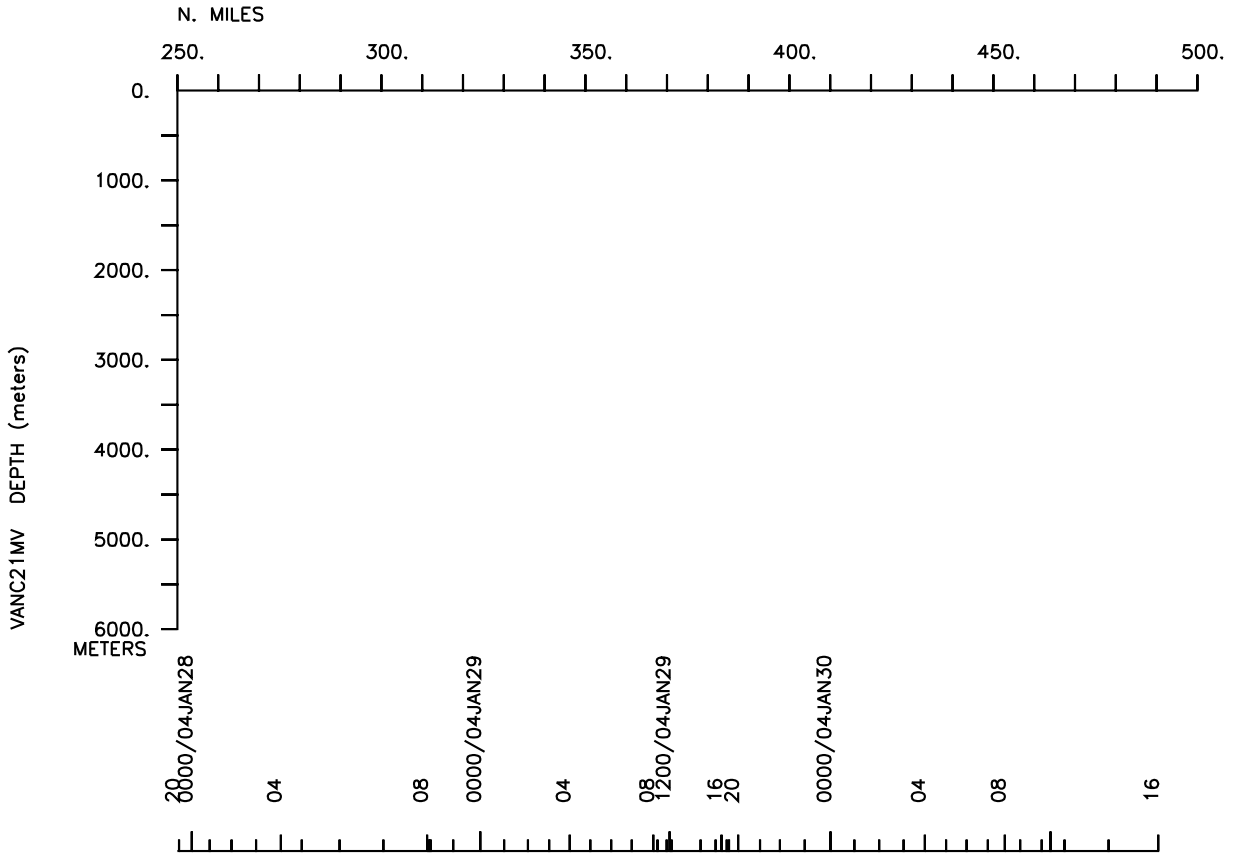
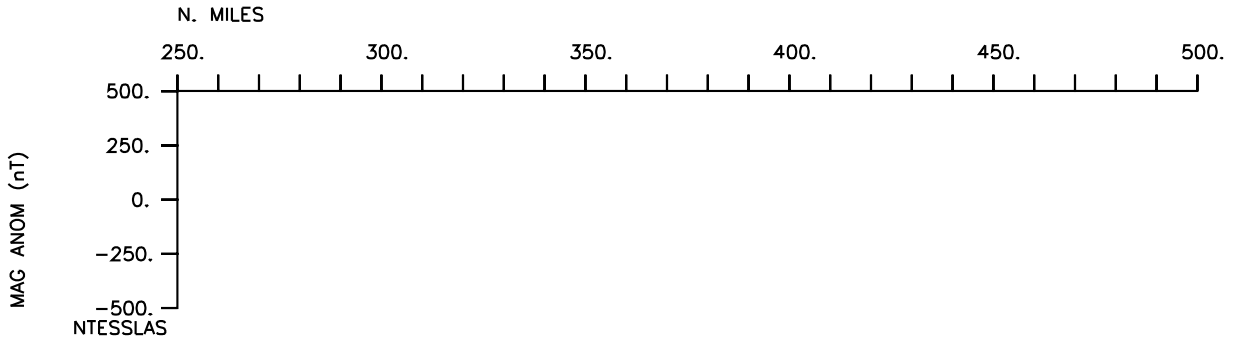
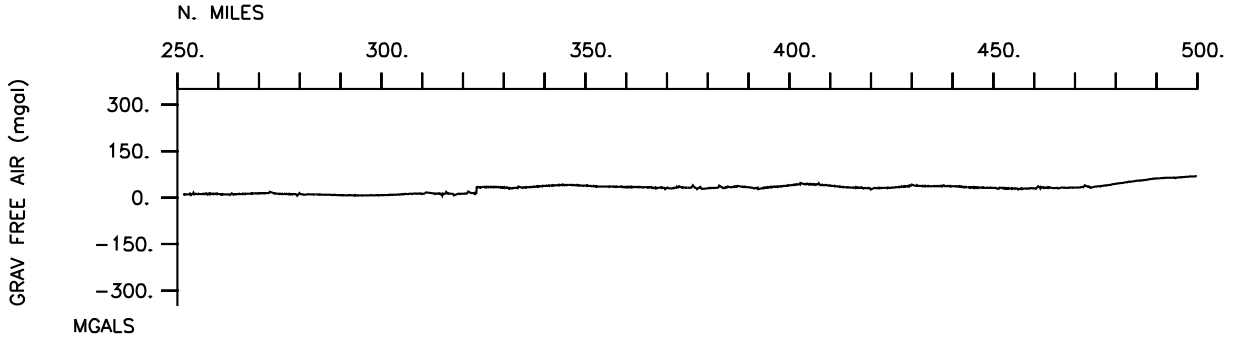
Multibeam-540 miles

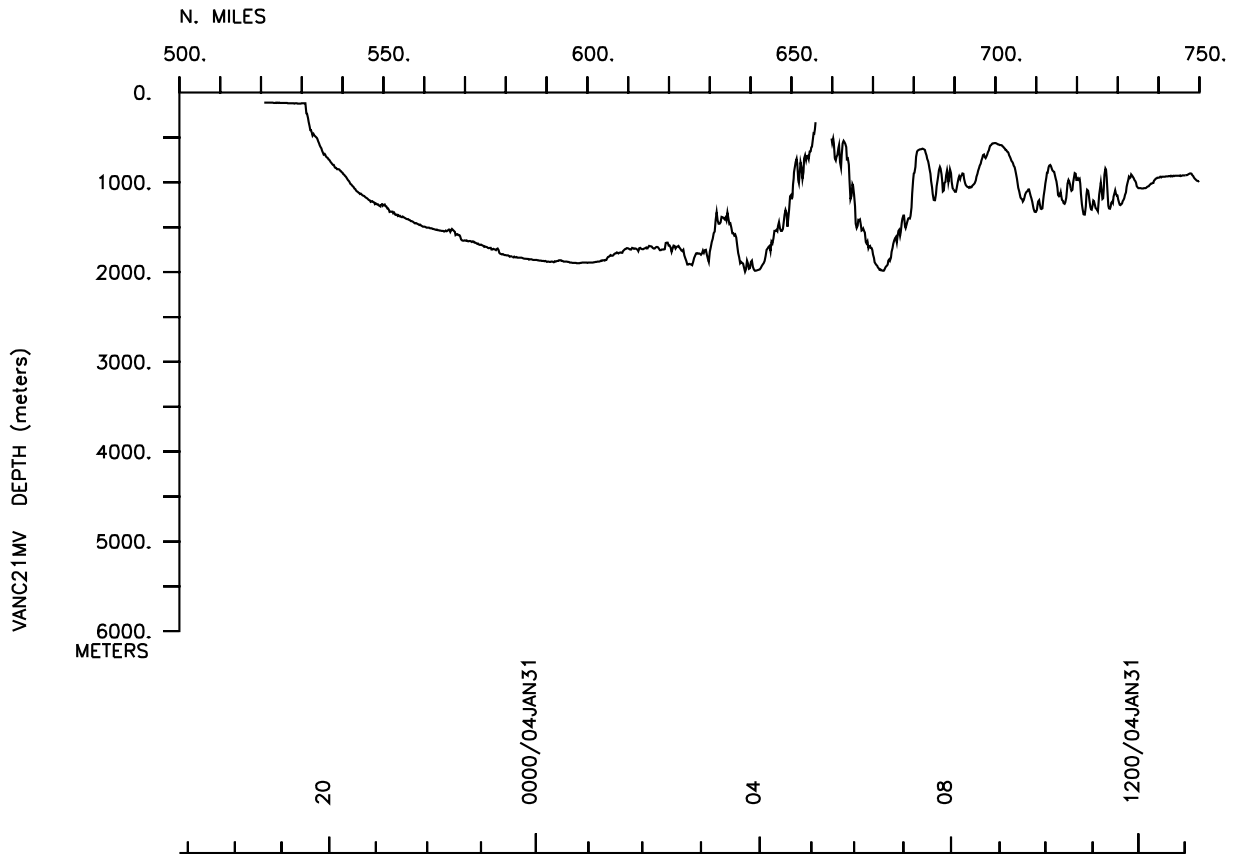
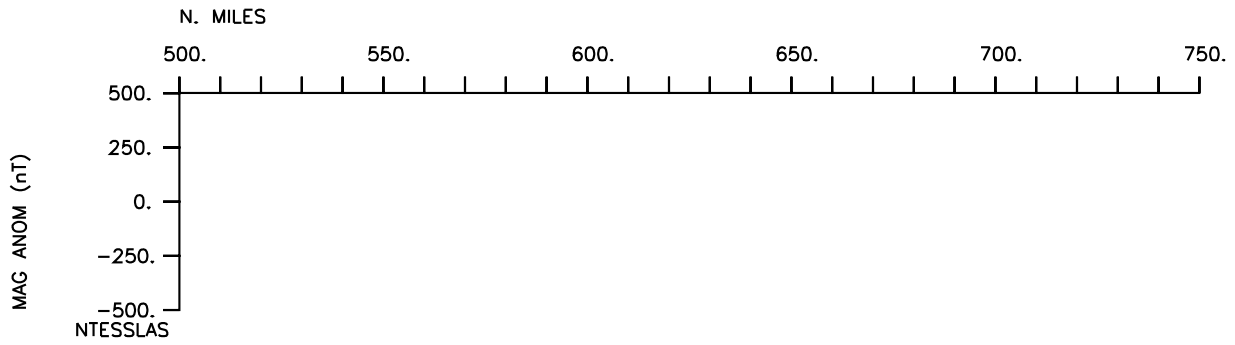
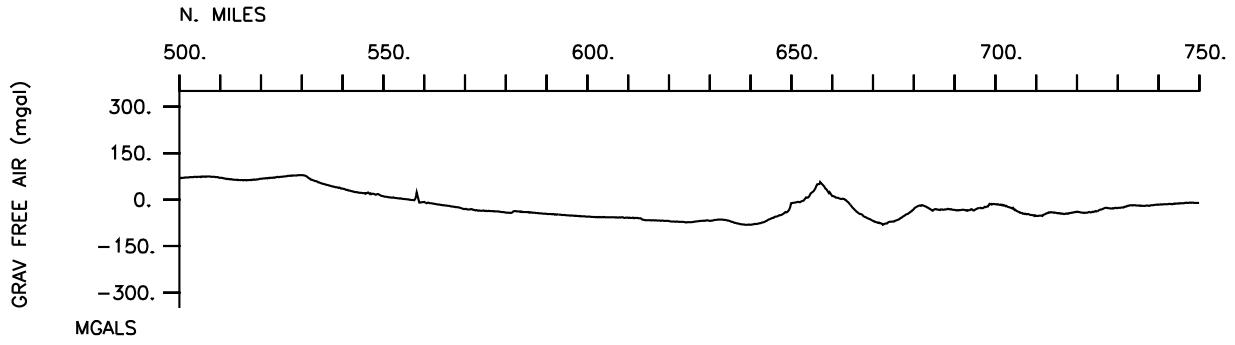
Gravity-2403 miles

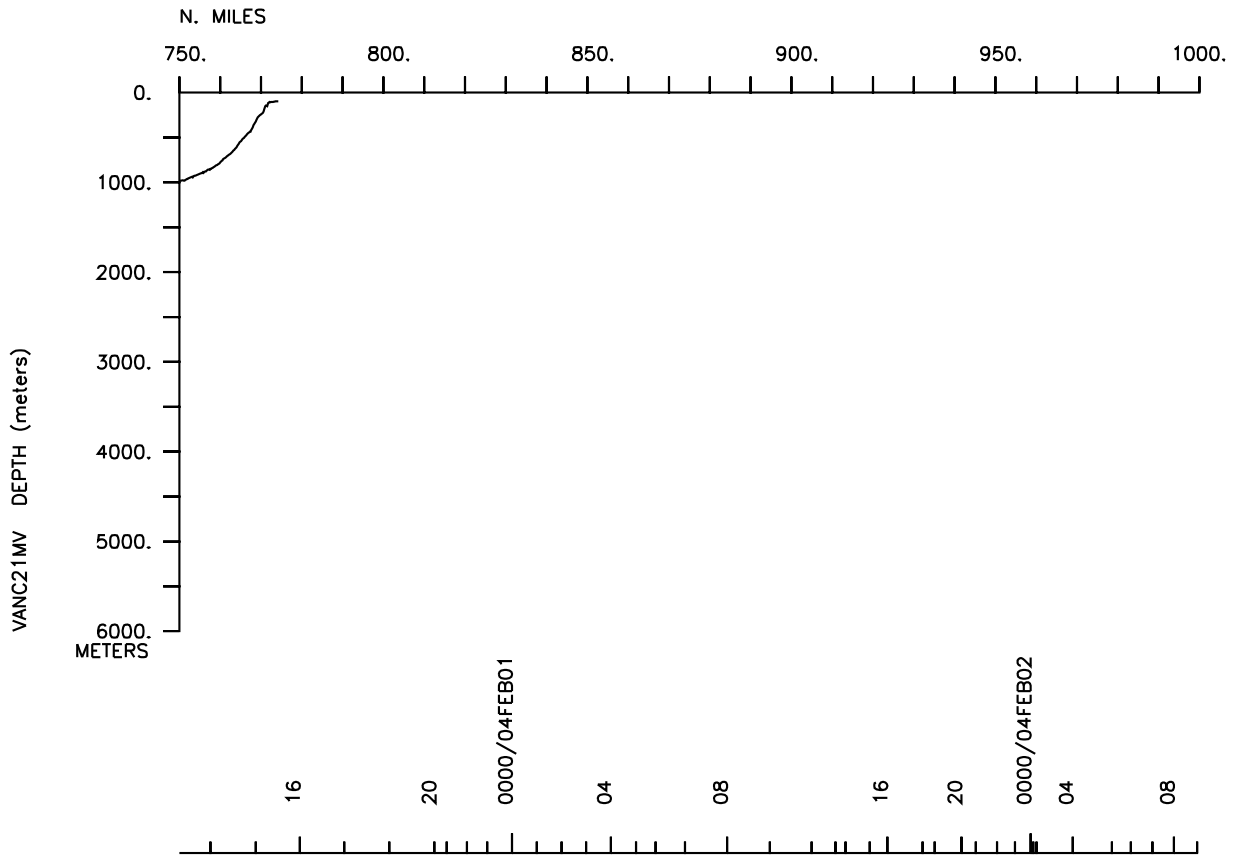
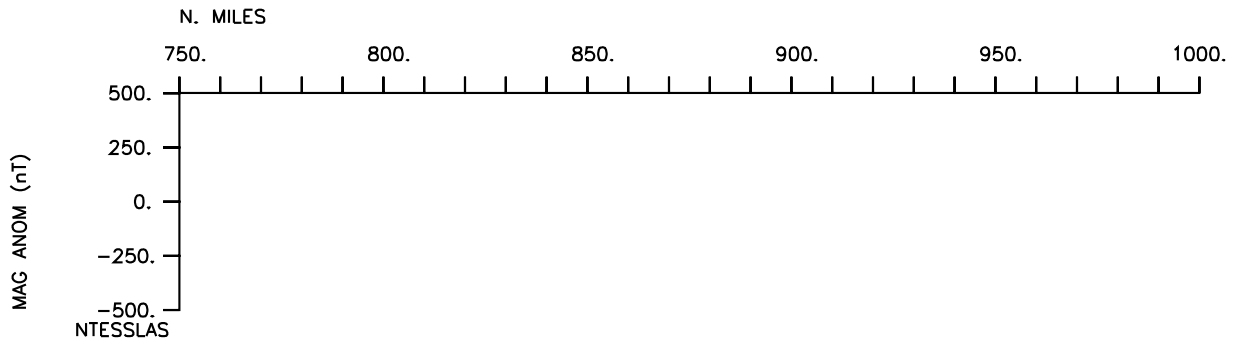
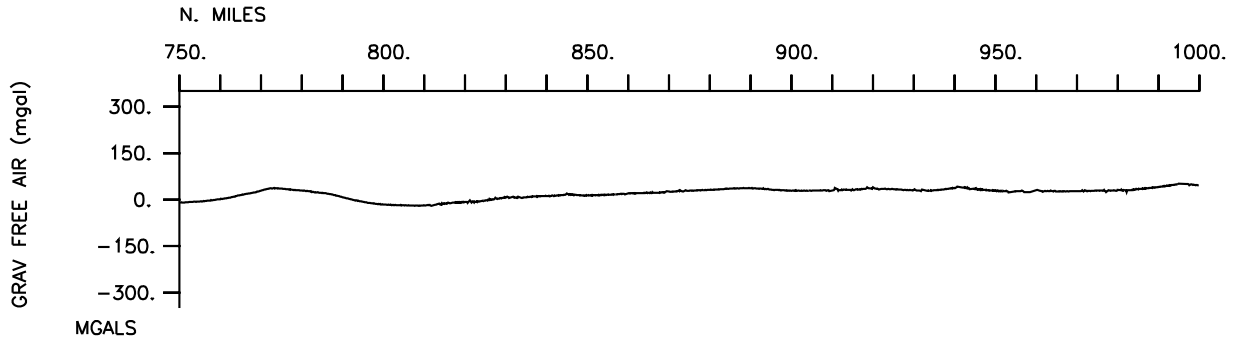
VANC21MV

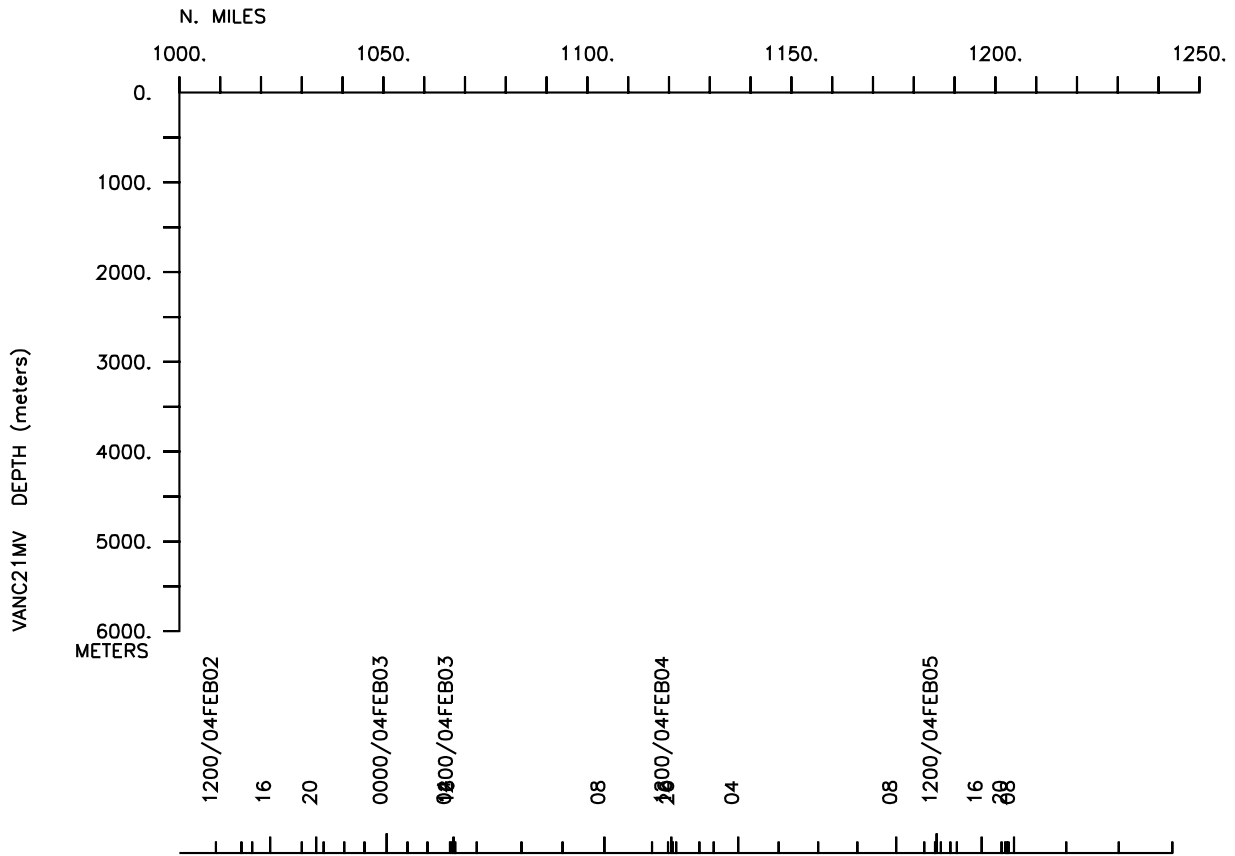
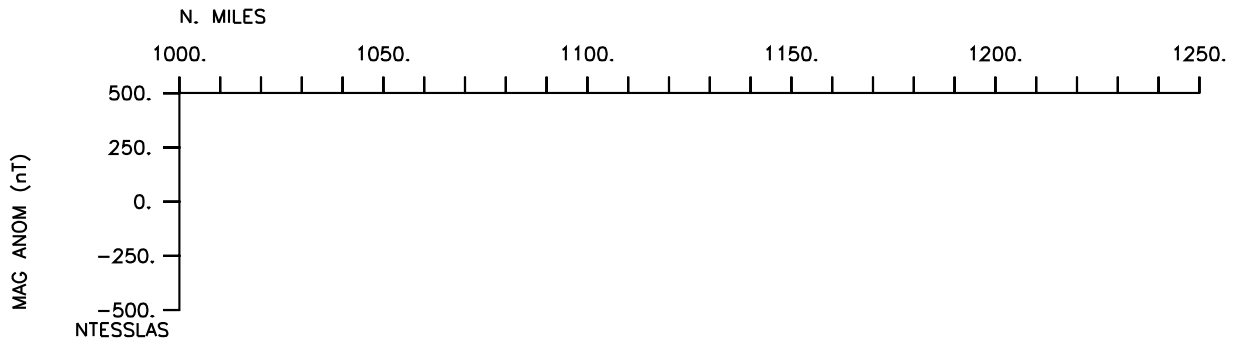
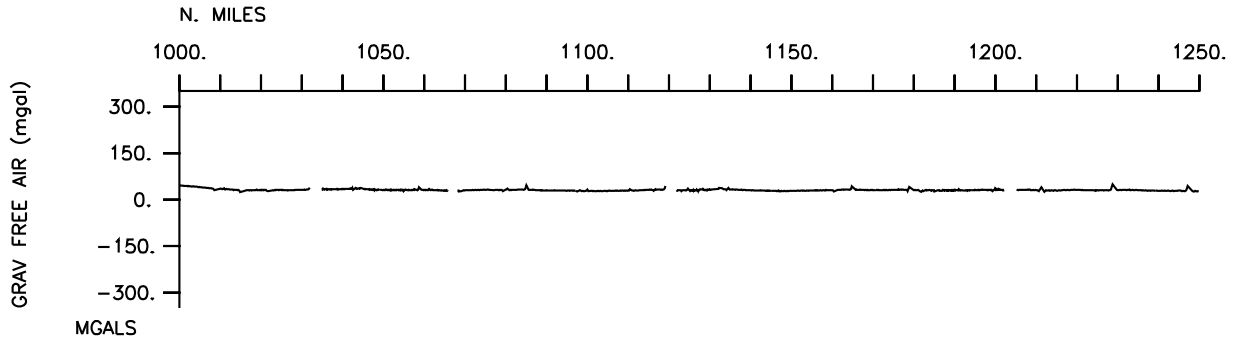


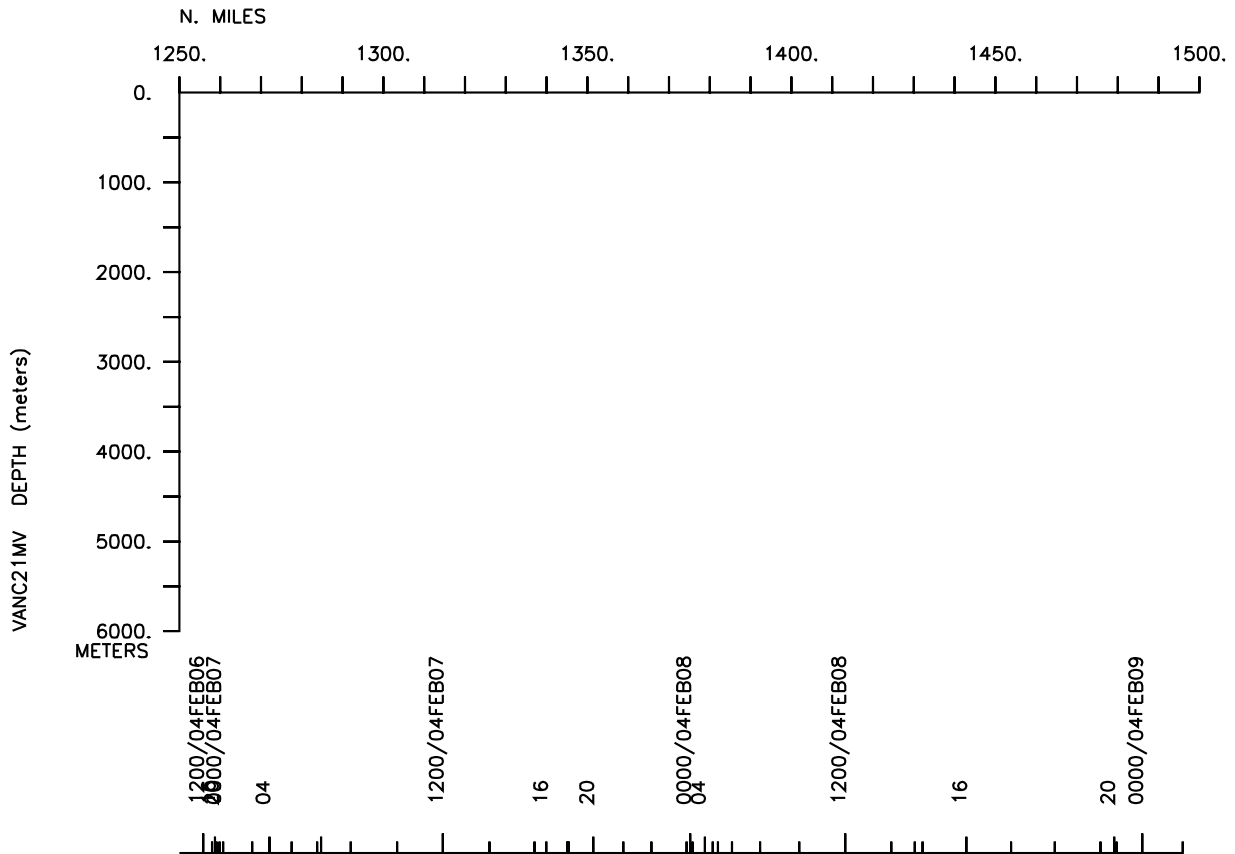
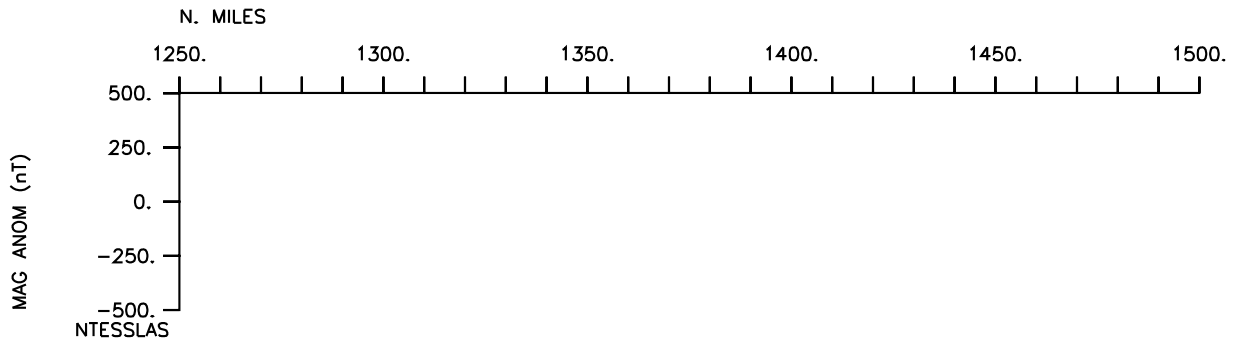
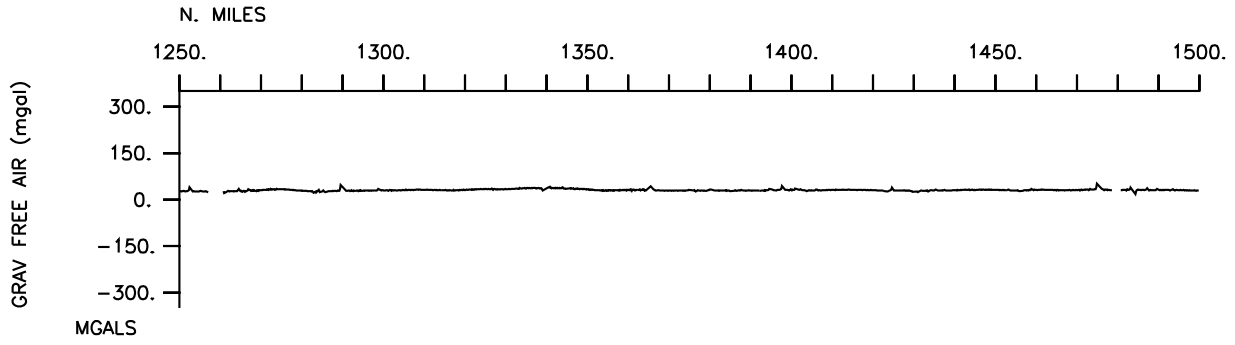


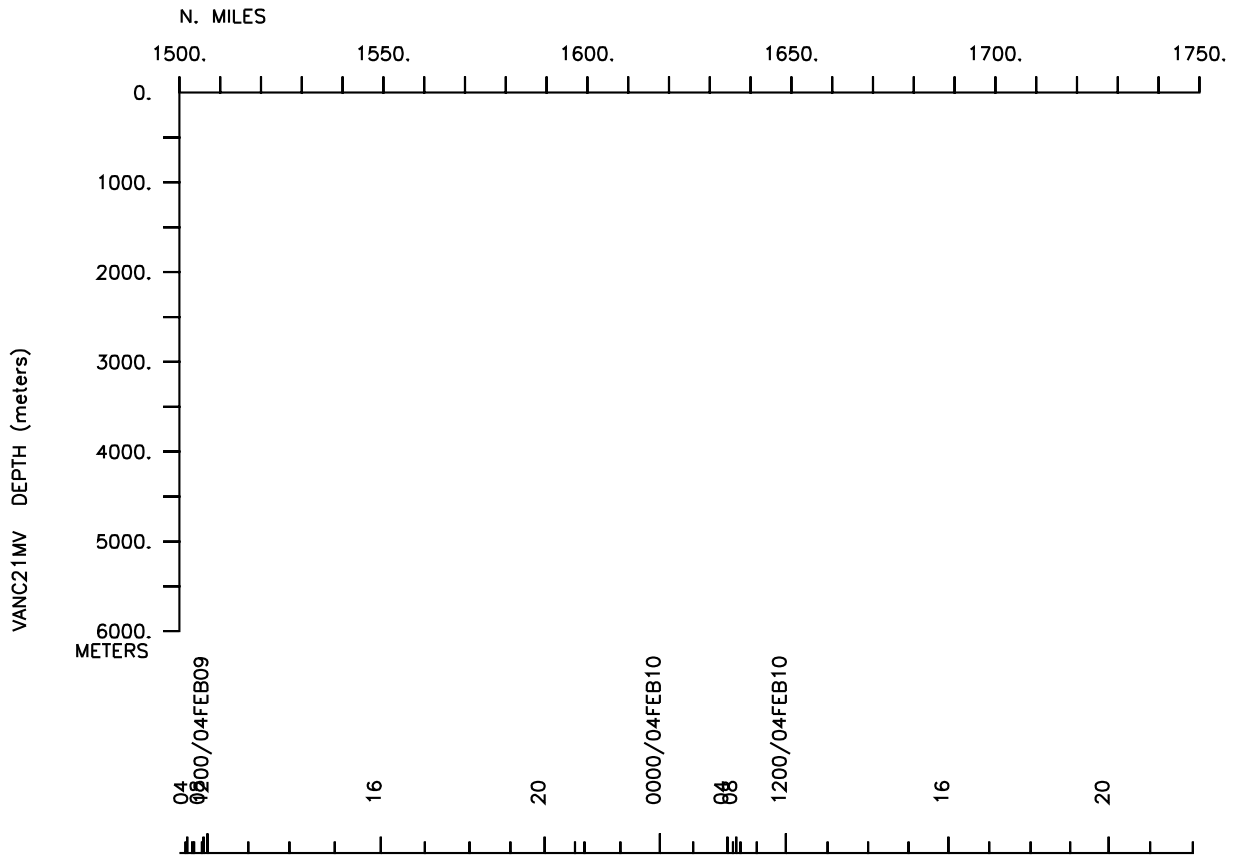
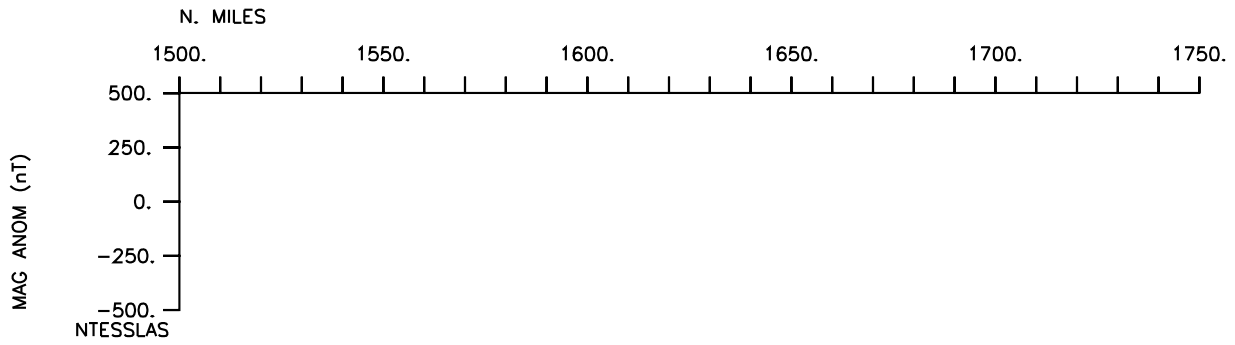
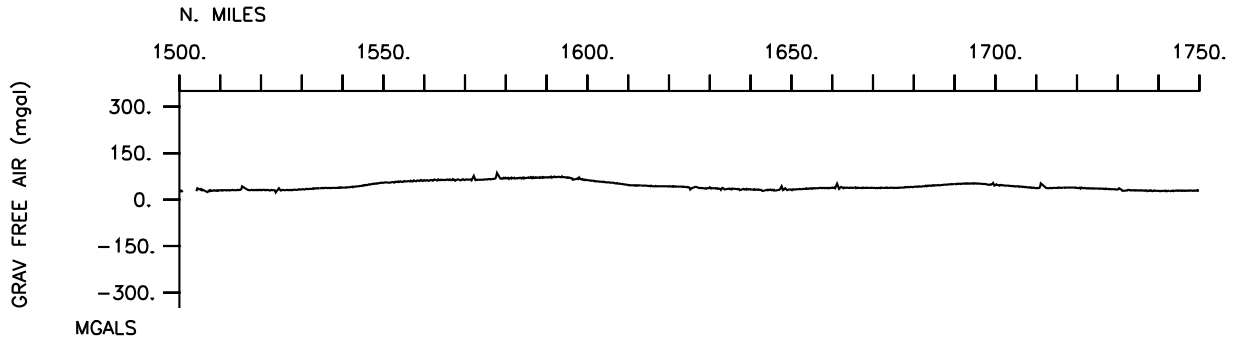


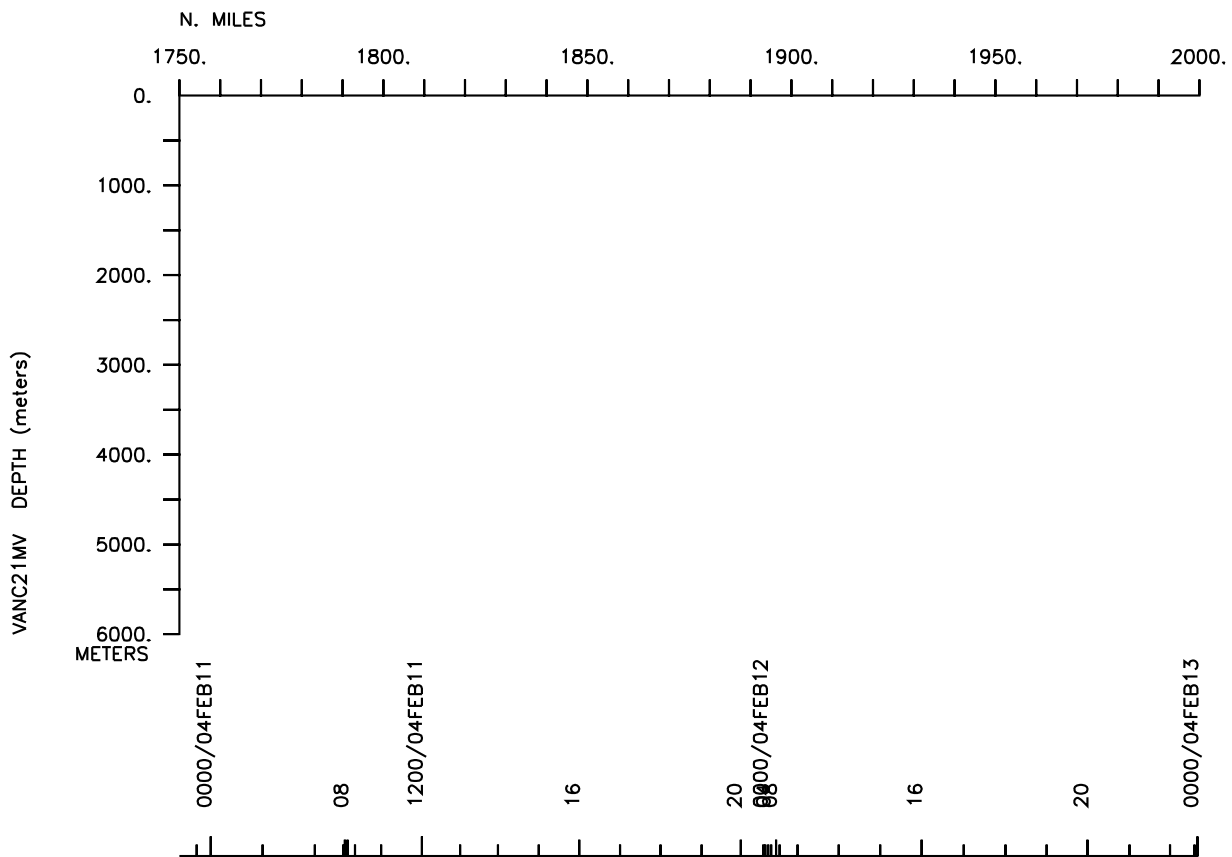
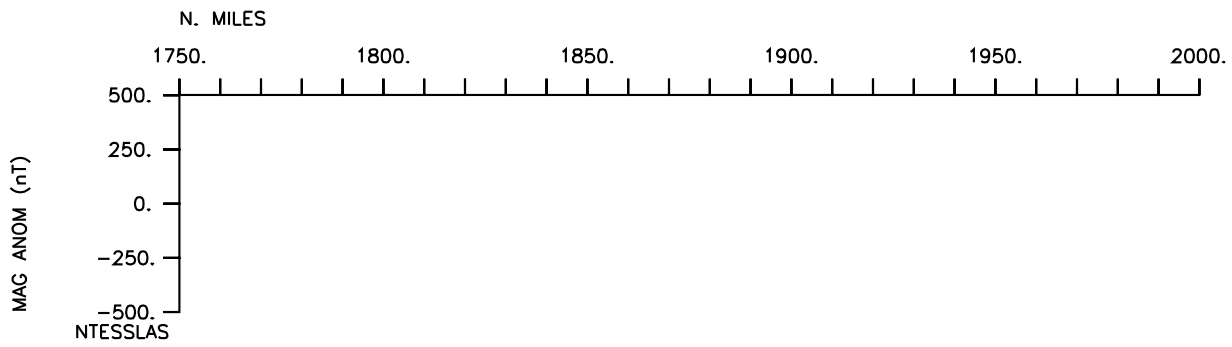
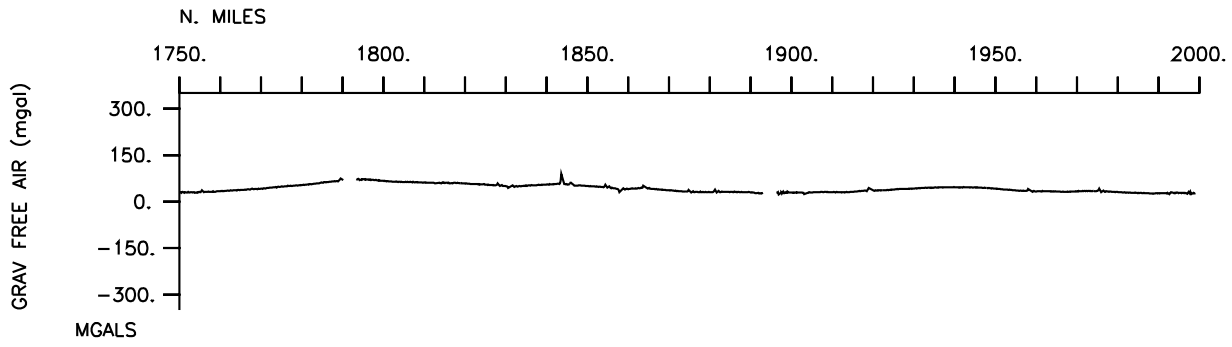


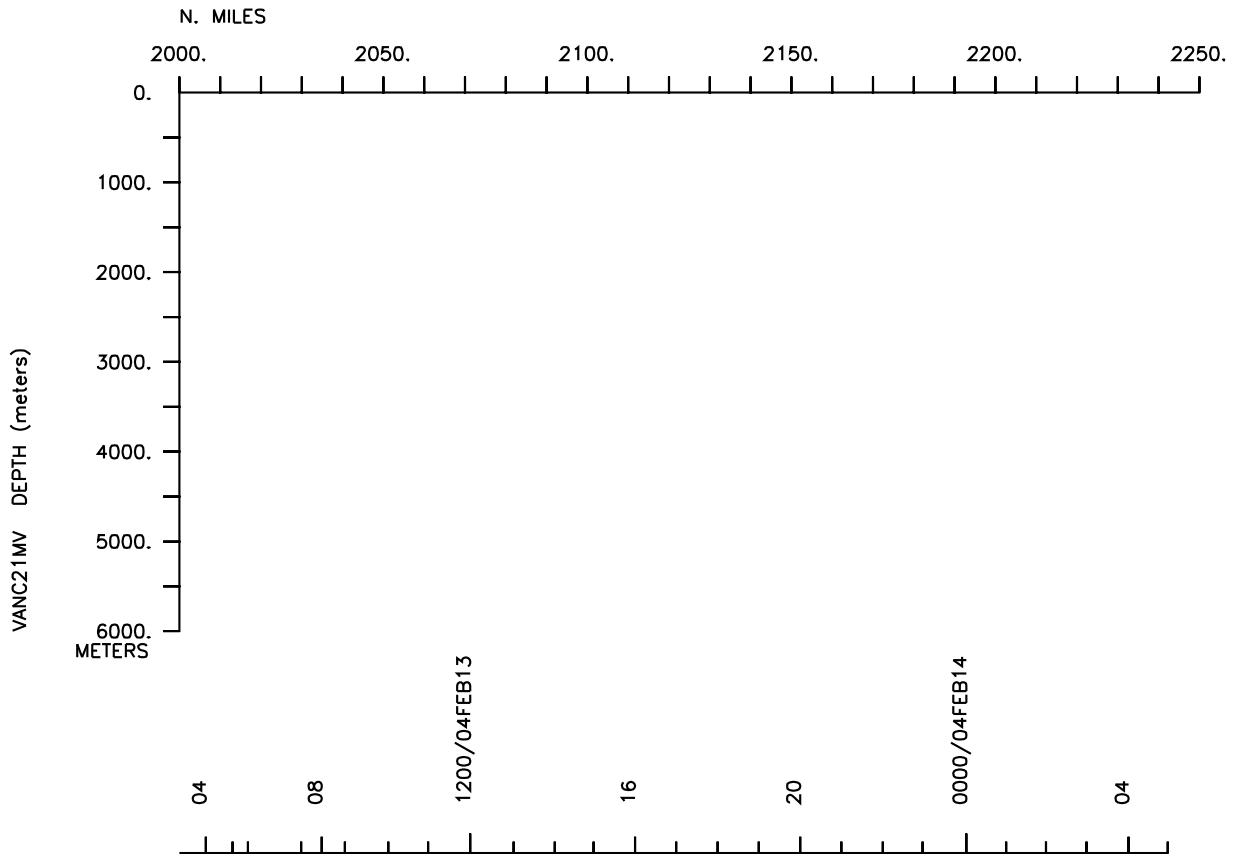
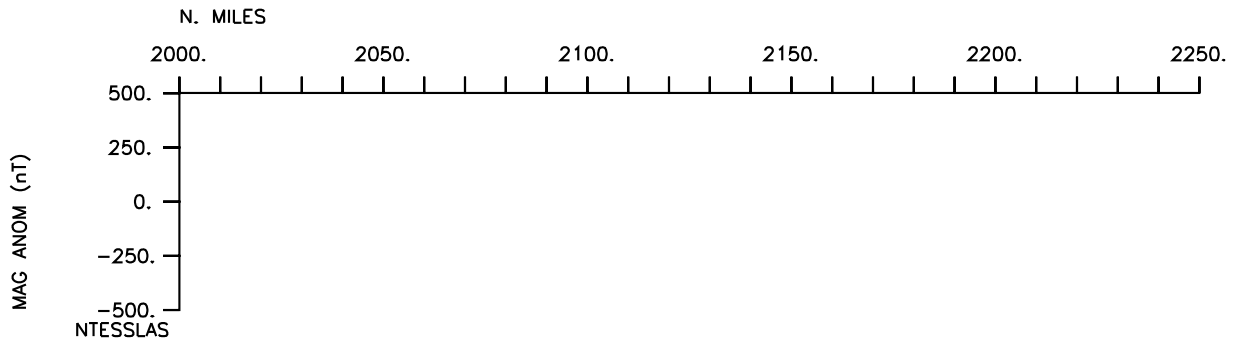
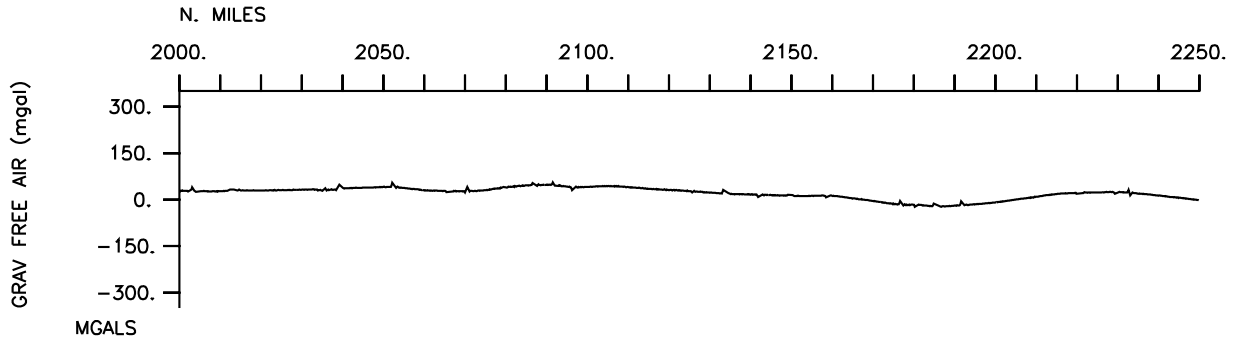


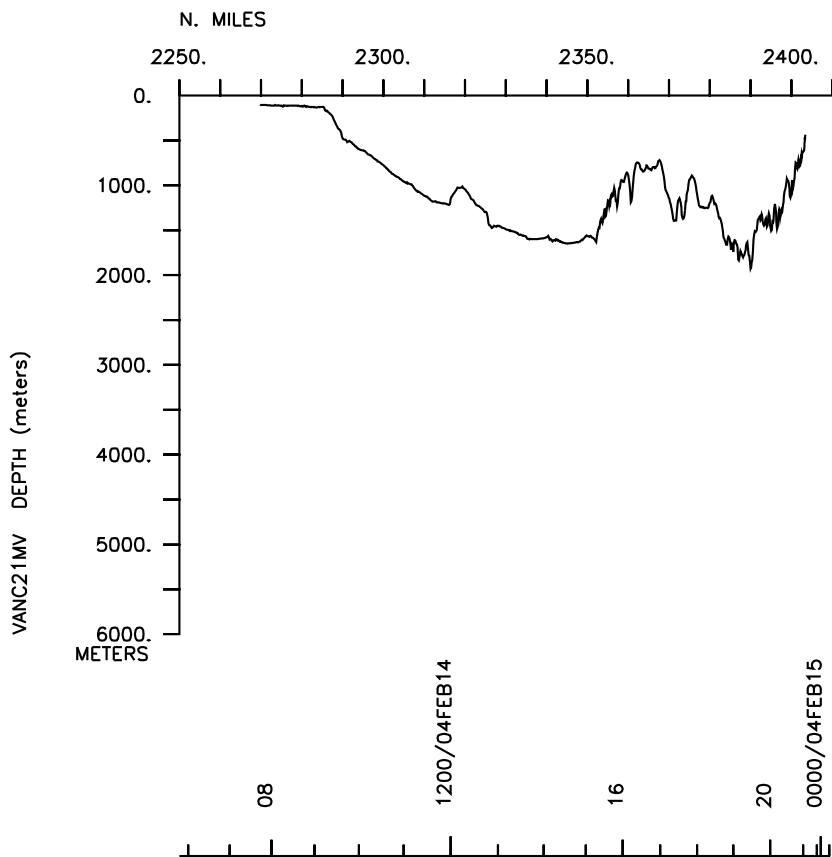
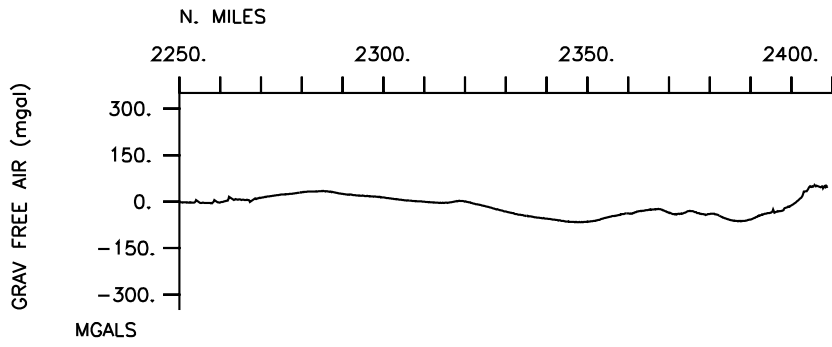












**** Ports ***

0800 260104 LGPT B Port Moresby, PNG. 09-28.00S 147-09.00E f VANC21MV
 0800 140204 LGPT E Port M0resby, PNG. 09-28.00S 147-09.00E f VANC21MV

**** Personnel ***

#	*****NAME*****	*****TITLE*****	*****AFFILIATION*****	**CRID**
PECS UWA	Nittrouer, C.	Chief Scientist	Univ. of Washington	VANC21MV
PEST UWA	Crockett, J.	Grad student	Univ. of Washington	VANC21MV
PESP SIO	Elwood, D.	Scientist	Scripps Institution	VANC21MV
PESP SIO	Walsh, J.	Scientist	Scripps Institution	VANC21MV
PECT STS	Foley, S.	Computer Tech	Scripps Institution	VANC21MV
PESP SIX	Goni, M.	Scientist	Univ. South Carolina	VANC21MV
PEST SIO	Hill, J.	Grad student	Scripps Institution	VANC21MV
PEST SIX	Monacci, N.	Grad student	Univ. South Carolina	VANC21MV
PEMT UWA	Nittrouer, D.	Technician	Univ. of Washington	VANC21MV
PEST UWA	Presto, M.	Grad student	Univ. of Washington	VANC21MV
PERT STS	Ravenhill, G.	Resident Tech	Scripps Institution	VANC21MV
PEST SIX	Elemunop, J.	Grad studentU.	U. Papua New Guinea	VANC21MV
PEST SIX	Temu, D.	Grad studentU.	U. Papua New Guinea	VANC21MV
PEST SIX	Kepo, N.	Grad studentU.	U. Papua New Guinea	VANC21MV
PEST SIX	Dira, L.	Grad studentU.	U. Papua New Guinea	VANC21MV
PEST SIX	Saro, M.	Grad studentU.	U. Papua New Guinea	VANC21MV
PEST SIX	Yehimen, R.	Grad student	U. Papua New Guinea	VANC21MV

**** NOTES ***

#An 'X' in the (B)egin/(E)nd column following the sample code indicates no
 #sample or data recovered. A 'C' indicates continuation of data collection
 #from before the beginning or after the end of a particular leg, (moored
 #bottom instruments, for example.) The number appearing in the columns
 #between the sample identifier and the disposition code, for many sample
 #entries, is the water depth in corrected meters.

#GMT	DDMMYY	SAMP	B	SAMPLE	DISP				p	CRUISE
#TIME	DATE	TZ	CODE	E IDENTIFIER	CODE	LATITUDE	LONGITUDE		c	LEG-SHIP
#-----	--	----	-	-----	----	-----	-----	-----	-	-----

**** Underway Data Curator - Shipboard Technical Support Group ext.41899 ***
 **** Digital Data Curator - Geological Data Center, S.P. Miller, ext.41898 ***

**** MultiBeam Data (vertical beam and side scan) ***

0500 260104 0 MBSR B multibeam&sidescan GDC 9-33.64S 147-05.98E g VANC21MV
 2131 140204 0 MBSR E multibeam&sidescan GDC 9-32.70S 147-07.29E g VANC21MV

**** Digital Gravity ***

0347 250104 0 GVDD B digital Gravity GDC 9-28.14S 147-08.38E g VANC21MV
 0037 150204 0 GVDD E digital Gravity GDC 9-28.56S 147-08.79E g VANC21MV

**** Integrated Meteorological Acquisition System ***

0800 260104 0 IMET B Weather Measurements GDC 9-29.38S 146-32.95E g VANC21MV
 0800 140204 0 IMET E Weather Measurements GDC 8-19.21S 145-23.05E g VANC21MV

**** Acoustic Doppler Current Profiler ***

0800 260104 0 ADCP B 300khz Current Meas. GDC 9-29.38S 146-32.95E g VANC21MV
 0800 140204 0 ADCP E Current Measurements GDC 8-19.21S 145-23.05E g VANC21MV

#GMT	DDMMYY	SAMP	B	SAMPLE	DISP				p	CRUISE
#TIME	DATE	TZ	CODE	E	IDENTIFIER	CODE	LATITUDE	LONGITUDE	c	LEG-SHIP
#-----	--	---	-	-----	-----	---	-----	-----	-	-----

*** Echo Sounder Records ***

0800	260104	0	DPR3	B	Echosounder	3.5kHz	GDC	9-29.38S	146-32.95E	g	VANC21MV
0800	140204	0	DPR3	E	Echosounder	3.5kHz	GDC	8-19.21S	145-23.05E	g	VANC21MV

*** Hydrocasts ***

0938	270104	0	HCXX	BLISP	#48	16M	UWA	8-36.91S	143-58.53E	g	VANC21MV
1035	270104	0	HCXX	BLISP	#49	15M	UWA	8-36.91S	143-58.53E	g	VANC21MV
1132	270104	0	HCXX	BLISP	#50	16M	UWA	8-36.91S	143-58.53E	g	VANC21MV
1236	270104	0	HCXX	BLISP	#51	16M	UWA	8-36.91S	143-58.53E	g	VANC21MV
1332	270104	0	HCXX	BLISP	#52	16M	UWA	8-36.91S	143-58.53E	g	VANC21MV
1435	270104	0	HCXX	BLISP	#53	16M	UWA	8-36.91S	143-58.53E	g	VANC21MV
1537	270104	0	HCXX	BLISP	#54	17M	UWA	8-36.91S	143-58.53E	g	VANC21MV
1637	270104	0	HCXX	BLISP	#55	18M	UWA	8-36.91S	143-58.53E	g	VANC21MV
1731	270104	0	HCXX	BLISP	#56	18M	UWA	8-36.92S	143-58.53E	g	VANC21MV
1834	270104	0	HCXX	BLISP	#57	18M	UWA	8-36.92S	143-58.53E	g	VANC21MV
1932	270104	0	HCXX	BLISP	#58	18M	UWA	8-36.92S	143-58.53E	g	VANC21MV
2032	270104	0	HCXX	BLISP	#59	16M	UWA	8-36.92S	143-58.53E	g	VANC21MV
2126	270104	0	HCXX	BLISP	#60	16M	UWA	8-36.92S	143-58.53E	g	VANC21MV
2230	270104	0	HCXX	BLISP	#61	14M	UWA	8-36.91S	143-58.53E	g	VANC21MV
0836	280104	0	HCXX	BLISP	#62	11M	UWA	8-04.54S	144-21.26E	g	VANC21MV
0934	280104	0	HCXX	BLISP	#63	11M	UWA	8-04.54S	144-21.26E	g	VANC21MV
1034	280104	0	HCXX	BLISP	#64	14M	UWA	8-04.54S	144-21.26E	g	VANC21MV
1135	280104	0	HCXX	BLISP	#65	14M	UWA	8-04.54S	144-21.26E	g	VANC21MV
1234	280104	0	HCXX	BLISP	#66	12M	UWA	8-04.54S	144-21.26E	g	VANC21MV
1344	280104	0	HCXX	BLISP	#67	15M	UWA	8-04.54S	144-21.26E	g	VANC21MV
1434	280104	0	HCXX	BLISP	#68	13M	UWA	8-04.54S	144-21.26E	g	VANC21MV
1536	280104	0	HCXX	BLISP	#69	13M	UWA	8-04.54S	144-21.26E	g	VANC21MV
1635	280104	0	HCXX	BLISP	#70	13M	UWA	8-04.54S	144-21.26E	g	VANC21MV
1732	280104	0	HCXX	BLISP	#71	14M	UWA	8-04.54S	144-21.26E	g	VANC21MV
1836	280104	0	HCXX	BLISP	#72	14M	UWA	8-04.54S	144-21.26E	g	VANC21MV
1934	280104	0	HCXX	BLISP	#73	12M	UWA	8-04.54S	144-21.26E	g	VANC21MV
2030	280104	0	HCXX	BLISP	#74	13M	UWA	8-04.54S	144-21.26E	g	VANC21MV
2129	280104	0	HCXX	BLISP	#75	12M	UWA	8-04.54S	144-21.26E	g	VANC21MV
0000	290104	0	HCXX	BLISP	#76	31M	UWA	8-10.85S	144-25.26E	g	VANC21MV
1127	290104	0	HCXX	BLISP	#77	15M	UWA	8-40.07S	144-08.84E	g	VANC21MV
1244	290104	0	HCXX	BLISP	#78	12M	UWA	8-39.90S	144-08.70E	g	VANC21MV
1426	290104	0	HCXX	BLISP	#79	13M	UWA	8-33.74S	144-08.90E	g	VANC21MV
1725	290104	0	HCXX	BLISP	#80	38M	UWA	8-37.63S	144-13.43E	g	VANC21MV
0847	300104	0	HCXX	BLISP	#81	15M	UWA	8-41.88S	143-56.60E	g	VANC21MV
0948	300104	0	HCXX	BLISP	#82	18M	UWA	8-45.94S	144-00.13E	g	VANC21MV
1146	300104	0	HCXX	BLISP	#83	31M	UWA	8-47.54S	144-01.53E	g	VANC21MV
1149	010204	0	HCXX	BLISP	#84	15M	UWA	8-33.69S	144-09.21E	g	VANC21MV
1248	010204	0	HCXX	BLISP	#85	20M	UWA	8-35.05S	144-10.90E	g	VANC21MV
1414	010204	0	HCXX	BLISP	#86	60M	UWA	8-39.24S	144-15.11E	g	VANC21MV
1025	020204	0	HCXX	BLISP	#87	85M	UWA	8-50.33S	144-12.27E	g	VANC21MV
1312	020204	0	HCXX	BLISP	#88	67M	UWA	8-45.87S	144-08.29E	g	VANC21MV
1555	020204	0	HCXX	BLISP	#89	32M	UWA	8-42.95S	144-02.17E	g	VANC21MV
0308	030204	0	HCXX	BLISP	#90	18M	UWA	8-36.90S	143-58.52E	g	VANC21MV
0407	030204	0	HCXX	BLISP	#91	18M	UWA	8-36.90S	143-58.52E	g	VANC21MV
0507	030204	0	HCXX	BLISP	#92	18M	UWA	8-36.90S	143-58.52E	g	VANC21MV
0606	030204	0	HCXX	BLISP	#93	18M	UWA	8-36.90S	143-58.52E	g	VANC21MV
0703	030204	0	HCXX	BLISP	#94	17M	UWA	8-36.90S	143-58.52E	g	VANC21MV
0804	030204	0	HCXX	BLISP	#95	17M	UWA	8-36.90S	143-58.52E	g	VANC21MV
0906	030204	0	HCXX	BLISP	#96	17M	UWA	8-36.90S	143-58.53E	g	VANC21MV
1003	030204	0	HCXX	BLISP	#97	17M	UWA	8-36.90S	143-58.52E	g	VANC21MV
1103	030204	0	HCXX	BLISP	#98	17M	UWA	8-36.90S	143-58.52E	g	VANC21MV
1202	030204	0	HCXX	BLISP	#99	17M	UWA	8-36.90S	143-58.52E	g	VANC21MV
1340	030204	0	HCXX	BLISP	#100	16M	UWA	8-36.90S	143-58.52E	g	VANC21MV

#GMT	DDMMYY	SAMP	B	SAMPLE		DISP			p	CRUISE
#TIME	DATE	TZ	CODE	E	IDENTIFIER	CODE	LATITUDE	LONGITUDE	c	LEG-SHIP
#-----	----	--	----	-	-----	----	-----	-----	-	-----
1402	030204	0	HCXX	BLISP	#101	17M	UWA	8-36.90S	143-58.52E	g VANC21MV
1603	030204	0	HCXX	BLISP	#102	17M	UWA	8-36.90S	143-58.52E	g VANC21MV
1703	030204	0	HCXX	BLISP	#103	14M	UWA	8-36.90S	143-58.52E	g VANC21MV
1807	030204	0	HCXX	BLISP	#104	15M	UWA	8-36.90S	143-58.52E	g VANC21MV
1901	030204	0	HCXX	BLISP	#105	16M	UWA	8-36.90S	143-58.52E	g VANC21MV
2002	030204	0	HCXX	BLISP	#106	17M	UWA	8-36.90S	143-58.52E	g VANC21MV
2059	030204	0	HCXX	BLISP	#107	18M	UWA	8-36.90S	143-58.53E	g VANC21MV
2208	030204	0	HCXX	BLISP	#108	18M	UWA	8-36.90S	143-58.52E	g VANC21MV
2305	030204	0	HCXX	BLISP	#109	17M	UWA	8-36.90S	143-58.52E	g VANC21MV
0008	040204	0	HCXX	BLISP	#110	16M	UWA	8-36.90S	143-58.52E	g VANC21MV
0107	040204	0	HCXX	BLISP	#111	16M	UWA	8-36.90S	143-58.52E	g VANC21MV
0212	040204	0	HCXX	BLISP	#112	16M	UWA	8-36.90S	143-58.52E	g VANC21MV
0300	040204	0	HCXX	BLISP	#113	15M	UWA	8-36.91S	143-58.52E	g VANC21MV
0331	040204	0	HCXX	BLISP	#114	15M	UWA	8-36.90S	143-58.52E	g VANC21MV
0402	040204	0	HCXX	BLISP	#115	13M	UWA	8-36.90S	143-58.52E	g VANC21MV
1107	040204	0	HCXX	BLISP	#116	14M	UWA	8-04.54S	144-21.26E	g VANC21MV
1205	040204	0	HCXX	BLISP	#117	14M	UWA	8-04.54S	144-21.26E	g VANC21MV
1304	040204	0	HCXX	BLISP	#118	14M	UWA	8-04.54S	144-21.26E	g VANC21MV
1403	040204	0	HCXX	BLISP	#119	14M	UWA	8-04.54S	144-21.26E	g VANC21MV
1505	040204	0	HCXX	BLISP	#120	13M	UWA	8-04.54S	144-21.26E	g VANC21MV
1605	040204	0	HCXX	BLISP	#121	13M	UWA	8-04.54S	144-21.26E	g VANC21MV
1702	040204	0	HCXX	BLISP	#122	13M	UWA	8-04.54S	144-21.25E	g VANC21MV
1805	040204	0	HCXX	BLISP	#123	12M	UWA	8-04.54S	144-21.26E	g VANC21MV
1902	040204	0	HCXX	BLISP	#124	13M	UWA	8-04.54S	144-21.26E	g VANC21MV
2001	040204	0	HCXX	BLISP	#125	14M	UWA	8-04.54S	144-21.26E	g VANC21MV
2058	040204	0	HCXX	BLISP	#126	15M	UWA	8-04.54S	144-21.25E	g VANC21MV
2208	040204	0	HCXX	BLISP	#127	15M	UWA	8-04.54S	144-21.26E	g VANC21MV
2303	040204	0	HCXX	BLISP	#128	15M	UWA	8-04.54S	144-21.26E	g VANC21MV
0006	050204	0	HCXX	BLISP	#129	15M	UWA	8-04.54S	144-21.26E	g VANC21MV
0911	050204	0	HCXX	BLISP	#130	30M	UWA	8-51.50S	143-58.38E	g VANC21MV
1118	050204	0	HCXX	BLISP	#131	18M	UWA	8-49.60S	143-56.33E	g VANC21MV
1318	050204	0	HCXX	BLISP	#132	16M	UWA	8-48.89S	143-55.74E	g VANC21MV
1800	050204	0	HCXX	BLISP	#133	13M	UWA	8-56.02S	143-48.23E	g VANC21MV
1902	050204	0	HCXX	BLISP	#134	13M	UWA	8-56.02S	143-48.23E	g VANC21MV
2001	050204	0	HCXX	BLISP	#135	14M	UWA	8-56.02S	143-48.23E	g VANC21MV
2100	050204	0	HCXX	BLISP	#136	13M	UWA	8-56.02S	143-48.23E	g VANC21MV
2201	050204	0	HCXX	BLISP	#137	14M	UWA	8-56.02S	143-48.23E	g VANC21MV
2303	050204	0	HCXX	BLISP	#138	14M	UWA	8-56.02S	143-48.23E	g VANC21MV
0001	060204	0	HCXX	BLISP	#139	13M	UWA	8-56.02S	143-48.23E	g VANC21MV
0105	060204	0	HCXX	BLISP	#140	14M	UWA	8-56.02S	143-48.23E	g VANC21MV
0203	060204	0	HCXX	BLISP	#141	13M	UWA	8-56.02S	143-48.23E	g VANC21MV
0303	060204	0	HCXX	BLISP	#142	11M	UWA	8-56.02S	143-48.23E	g VANC21MV
0401	060204	0	HCXX	BLISP	#143	13M	UWA	8-56.01S	143-48.24E	g VANC21MV
0510	060204	0	HCXX	BLISP	#144	13M	UWA	8-56.02S	143-48.23E	g VANC21MV
0613	060204	0	HCXX	BLISP	#145	12M	UWA	8-56.02S	143-48.23E	g VANC21MV
0700	060204	0	HCXX	BLISP	#146	15M	UWA	8-56.02S	143-48.23E	g VANC21MV
1236	060204	0	HCXX	BLISP	#147	14M	UWA	8-15.81S	144-13.44E	g VANC21MV
1334	060204	0	HCXX	BLISP	#148	14M	UWA	8-15.81S	144-13.44E	g VANC21MV
1435	060204	0	HCXX	BLISP	#149	15M	UWA	8-15.81S	144-13.44E	g VANC21MV
1535	060204	0	HCXX	BLISP	#150	15M	UWA	8-15.83S	144-13.43E	g VANC21MV
1635	060204	0	HCXX	BLISP	#151	17M	UWA	8-15.80S	144-13.44E	g VANC21MV
1733	060204	0	HCXX	BLISP	#152	13M	UWA	8-15.80S	144-13.44E	g VANC21MV
1831	060204	0	HCXX	BLISP	#153	13M	UWA	8-15.80S	144-13.44E	g VANC21MV
1931	060204	0	HCXX	BLISP	#154	11M	UWA	8-15.81S	144-13.44E	g VANC21MV
2030	060204	0	HCXX	BLISP	#155	12M	UWA	8-15.80S	144-13.44E	g VANC21MV
2133	060204	0	HCXX	BLISP	#156	14M	UWA	8-15.81S	144-13.44E	g VANC21MV
2231	060204	0	HCXX	BLISP	#157	16M	UWA	8-15.81S	144-13.44E	g VANC21MV
2333	060204	0	HCXX	BLISP	#158	15M	UWA	8-15.81S	144-13.44E	g VANC21MV
0036	070204	0	HCXX	BLISP	#159	15M	UWA	8-15.81S	144-13.44E	g VANC21MV

#GMT	DDMMYY	SAMP	B	SAMPLE		DISP				p	CRUISE
#TIME	DATE	TZ	CODE	E	IDENTIFIER	CODE	LATITUDE	LONGITUDE		c	LEG-SHIP
#-----	--	---	-	-----	-----	-----	-----	-----	-----	-	-----
0140	070204	0	HCXX	BLISP	#160	14M	UWA	8-15.82S	144-13.35E	g	VANC21MV
1439	070204	0	HCXX	BLISP	#161	59M	UWA	9-05.96S	143-56.17E	g	VANC21MV
1731	070204	0	HCXX	BLISP	#162	71M	UWA	9-01.69S	143-53.79E	g	VANC21MV
0431	080204	0	HCXX	BLISP	#163	20M	UWA	8-38.95S	143-59.09E	g	VANC21MV
0121	100204	0	HCXX	BLISP	#164	63M	UWA	9-08.17S	143-56.23E	g	VANC21MV
0421	100204	0	HCXX	BLISP	#165	44M	UWA	9-00.81S	143-52.89E	g	VANC21MV
0625	100204	0	HCXX	BLISP	#166	45M	UWA	8-59.90S	143-53.45E	g	VANC21MV
0857	100204	0	HCXX	BLISP	#167	75M	UWA	8-59.33S	143-52.92E	g	VANC21MV

*** Temperature, Conductivity, Density ***
 *** CTDs to U. of So. Carolina ***

0000	270104	0	TDCT	CTD	#37	14M	24BTLS	SIX	8-50.33S	143-56.00E	g	VANC21MV
1148	270104	0	TDCT	CTD	#38	14M	24BTLS	SIX	8-36.91S	143-58.53E	g	VANC21MV
1345	270104	0	TDCT	CTD	#39	14M	24BTLS	SIX	8-36.91S	143-58.53E	g	VANC21MV
1551	270104	0	TDCT	CTD	#40	14M	24BTLS	SIX	8-36.91S	143-58.53E	g	VANC21MV
1747	270104	0	TDCT	CTD	#41	14M	24BTLS	SIX	8-36.91S	143-58.53E	g	VANC21MV
1946	270104	0	TDCT	CTD	#42	14M	24BTLS	SIX	8-36.92S	143-58.53E	g	VANC21MV
2138	270104	0	TDCT	CTD	#43	14M	24BTLS	SIX	8-36.91S	143-58.53E	g	VANC21MV
0850	280104	0	TDCT	CTD	#44	11M	24BTLS	SIX	8-04.54S	144-21.26E	g	VANC21MV
1046	280104	0	TDCT	CTD	#45	11M	24BTLS	SIX	8-04.54S	144-21.26E	g	VANC21MV
1245	280104	0	TDCT	CTD	#46	10M	24BTLS	SIX	8-04.54S	144-21.26E	g	VANC21MV
1450	280104	0	TDCT	CTD	#47	11M	24BTLS	SIX	8-04.54S	144-21.26E	g	VANC21MV
1650	280104	0	TDCT	CTD	#48	11M	24BTLS	SIX	8-04.54S	144-21.26E	g	VANC21MV
1849	280104	0	TDCT	CTD	#49	11M	24BTLS	SIX	8-04.54S	144-21.26E	g	VANC21MV
2043	280104	0	TDCT	CTD	#50	11M	24BTLS	SIX	8-04.54S	144-21.26E	g	VANC21MV
0902	290104	0	TDCT	CTD	#51	11M	24BTLS	SIX	8-41.85S	144-10.65E	g	VANC21MV
1138	290104	0	TDCT	CTD	#52	30M	24BTLS	SIX	8-40.07S	144-08.84E	g	VANC21MV
1544	290104	0	TDCT	CTD	#53	12M	24BTLS	SIX	8-36.39S	144-12.15E	g	VANC21MV
1743	290104	0	TDCT	CTD	#54	23M	24BTLS	SIX	8-37.63S	144-13.43E	g	VANC21MV
1000	300104	0	TDCT	CTD	#55	33M	24BTLS	SIX	8-45.94S	144-00.13E	g	VANC21MV
1203	300104	0	TDCT	CTD	#56	17M	24BTLS	SIX	8-47.54S	144-01.53E	g	VANC21MV
1201	010204	0	TDCT	CTD	#57	26M	24BTLS	SIX	8-33.69S	144-09.21E	g	VANC21MV
1436	010204	0	TDCT	CTD	#58	53M	24BTLS	SIX	8-39.25S	144-15.11E	g	VANC21MV
1051	020204	0	TDCT	CTD	#59	72M	24BTLS	SIX	8-50.33S	144-12.27E	g	VANC21MV
1333	020204	0	TDCT	CTD	#60	60M	24BTLS	SIX	8-45.87S	144-08.29E	g	VANC21MV
1611	020204	0	TDCT	CTD	#61	29M	24BTLS	SIX	8-42.95S	144-02.17E	g	VANC21MV
0325	030204	0	TDCT	CTD	#62	14M	24BTLS	SIX	8-36.90S	143-58.52E	g	VANC21MV
0525	030204	0	TDCT	CTD	#63	15M	24BTLS	SIX	8-36.90S	143-58.52E	g	VANC21MV
0717	030204	0	TDCT	CTD	#64	15M	24BTLS	SIX	8-36.90S	143-58.52E	g	VANC21MV
0920	030204	0	TDCT	CTD	#65	15M	24BTLS	SIX	8-36.90S	143-58.52E	g	VANC21MV
1116	030204	0	TDCT	CTD	#66	14M	24BTLS	SIX	8-36.90S	143-58.52E	g	VANC21MV
1315	030204	0	TDCT	CTD	#67	14M	24BTLS	SIX	8-36.90S	143-58.52E	g	VANC21MV
1525	030204	0	TDCT	CTD	#68	14M	24BTLS	SIX	8-36.90S	143-58.52E	g	VANC21MV
1715	030204	0	TDCT	CTD	#69	12M	24BTLS	SIX	8-36.90S	143-58.52E	g	VANC21MV
1917	030204	0	TDCT	CTD	#70	14M	24BTLS	SIX	8-36.90S	143-58.52E	g	VANC21MV
2112	030204	0	TDCT	CTD	#71	16M	24BTLS	SIX	8-36.90S	143-58.52E	g	VANC21MV
2318	030204	0	TDCT	CTD	#72	15M	24BTLS	SIX	8-36.90S	143-58.52E	g	VANC21MV
0123	040204	0	TDCT	CTD	#73	14M	24BTLS	SIX	8-36.90S	143-58.52E	g	VANC21MV
0315	040204	0	TDCT	CTD	#74	4M	24BTLS	SIX	8-36.90S	143-58.53E	g	VANC21MV
1123	040204	0	TDCT	CTD	#75	12M	24BTLS	SIX	8-04.54S	144-21.26E	g	VANC21MV
1318	040204	0	TDCT	CTD	#76	11M	24BTLS	SIX	8-04.54S	144-21.26E	g	VANC21MV
1523	040204	0	TDCT	CTD	#77	11M	24BTLS	SIX	8-04.61S	144-21.25E	g	VANC21MV
1717	040204	0	TDCT	CTD	#78	9M	24BTLS	SIX	8-04.54S	144-21.25E	g	VANC21MV
1917	040204	0	TDCT	CTD	#79	10M	24BTLS	SIX	8-04.54S	144-21.26E	g	VANC21MV
2111	040204	0	TDCT	CTD	#80	11M	24BTLS	SIX	8-04.54S	144-21.26E	g	VANC21MV
2317	040204	0	TDCT	CTD	#81	12M	24BTLS	SIX	8-04.54S	144-21.26E	g	VANC21MV
0929	050204	0	TDCT	CTD	#82	26M	24BTLS	SIX	8-51.50S	143-58.38E	g	VANC21MV
1136	050204	0	TDCT	CTD	#83	26M	24BTLS	SIX	8-49.60S	143-56.33E	g	VANC21MV
1815	050204	0	TDCT	CTD	#84	12M	24BTLS	SIX	8-56.02S	143-48.23E	g	VANC21MV
2013	050204	0	TDCT	CTD	#85	12M	24BTLS	SIX	8-56.02S	143-48.23E	g	VANC21MV
2215	050204	0	TDCT	CTD	#86	14M	24BTLS	SIX	8-56.02S	143-48.23E	g	VANC21MV
0018	060204	0	TDCT	CTD	#87	14M	24BTLS	SIX	8-56.02S	143-48.23E	g	VANC21MV
0216	060204	0	TDCT	CTD	#88	12M	24BTLS	SIX	8-56.02S	143-48.23E	g	VANC21MV

#GMT	DDMMYY	SAMP	B	SAMPLE	DISP				p	CRUISE
#TIME	DATE	TZ	CODE	E IDENTIFIER	CODE	LATITUDE	LONGITUDE		c	LEG-SHIP
#-----	---	---	---	-----	---	-----	-----	---	---	-----
0419	060204	0	TDCT	CTD #89 12M 24BTLS	SIX	8-56.02S	143-48.23E	g		VANC21MV
0626	060204	0	TDCT	CTD #90 11M 24BTLS	SIX	8-56.02S	143-48.23E	g		VANC21MV
1249	060204	0	TDCT	CTD #91 13M 24BTLS	SIX	8-15.80S	144-13.45E	g		VANC21MV
1449	060204	0	TDCT	CTD #92 12M 24BTLS	SIX	8-15.80S	144-13.44E	g		VANC21MV
1650	060204	0	TDCT	CTD #93 11M 24BTLS	SIX	8-15.81S	144-13.44E	g		VANC21MV
1845	060204	0	TDCT	CTD #94 11M 24BTLS	SIX	8-15.81S	144-13.44E	g		VANC21MV
2044	060204	0	TDCT	CTD #95 12M 24BTLS	SIX	8-15.80S	144-13.44E	g		VANC21MV
2245	060204	0	TDCT	CTD #96 16M 24BTLS	SIX	8-15.81S	144-13.44E	g		VANC21MV
0053	070204	0	TDCT	CTD #97 14M 24BTLS	SIX	8-15.81S	144-13.45E	g		VANC21MV
1500	070204	0	TDCT	CTD #98 54M 24BTLS	SIX	9-05.96S	143-56.16E	g		VANC21MV
1753	070204	0	TDCT	CTD #99 67M 24BTLS	SIX	9-01.69S	143-53.79E	g		VANC21MV
0446	080204	0	TDCT	CTD #10017M 24BTLS	SIX	8-38.95S	143-59.09E	g		VANC21MV
0155	090204	0	TDCT	CTD #10165M 24BTLS	SIX	8-34.53S	143-57.84E	g		VANC21MV
0442	090204	0	TDCT	CTD #10242M 24BTLS	SIX	8-34.66S	143-57.87E	g		VANC21MV
0646	090204	0	TDCT	CTD #10348M 24BTLS	SIX	8-34.46S	143-57.74E	g		VANC21MV
0919	090204	0	TDCT	CTD #10466M 24BTLS	SIX	8-34.59S	143-57.81E	g		VANC21MV

*** Cores ***

1049	270104	0	COBX	BOX #42 15M	UWA	8-36.91S	143-58.53E	g		VANC21MV
1246	270104	0	COBX	BOX #43 18M	UWA	8-36.91S	143-58.53E	g		VANC21MV
1447	270104	0	COBX	BOX #44 18M	UWA	8-36.91S	143-58.53E	g		VANC21MV
1650	270104	0	COBX	BOX #45 18M	UWA	8-36.91S	143-58.53E	g		VANC21MV
1849	270104	0	COBX	BOX #46 19M	UWA	8-36.91S	143-58.53E	g		VANC21MV
2046	270104	0	COBX	BOX #47 16M	UWA	8-36.91S	143-58.53E	g		VANC21MV
0947	280104	0	COBX	BOX #48 11M	UWA	8-04.54S	144-21.26E	g		VANC21MV
1145	280104	0	COBX	BOX #49 15M	UWA	8-04.54S	144-21.26E	g		VANC21MV
1355	280104	0	COBX	BOX #50 12M	UWA	8-04.55S	144-21.26E	g		VANC21MV
1548	280104	0	COBX	BOX #51 13M	UWA	8-04.53S	144-21.26E	g		VANC21MV
1745	280104	0	COBX	BOX #52 15M	UWA	8-04.54S	144-21.26E	g		VANC21MV
1948	280104	0	COBX	BOX #53 15M	UWA	8-04.54S	144-21.26E	g		VANC21MV
0921	290104	0	COBX	BOX #54 30M	UWA	8-41.85S	144-10.65E	g		VANC21MV
1602	290104	0	COBX	BOX #55 30M	UWA	8-36.39S	144-12.15E	g		VANC21MV
1828	290104	0	COBX	BOX #56 39M	UWA	8-37.63S	144-13.43E	g		VANC21MV
1048	300104	0	COBX	BOX #57 21M	UWA	8-45.94S	144-00.13E	g		VANC21MV
1218	300104	0	COBX	BOX #58 32M	UWA	8-47.54S	144-01.53E	g		VANC21MV
1109	010204	0	COBX	BOX #59 16M	UWA	8-33.68S	144-09.21E	g		VANC21MV
1523	010204	0	COBX	BOX #60 61M	UWA	8-39.26S	144-15.11E	g		VANC21MV
1121	020204	0	COBX	BOX #61 80M	UWA	8-50.33S	144-12.27E	g		VANC21MV
1423	020204	0	COBX	BOX #62 67M	UWA	8-45.87S	144-08.29E	g		VANC21MV
1635	020204	0	COBX	BOX #63 40M	UWA	8-42.95S	144-02.17E	g		VANC21MV
0425	030204	0	COBX	BOX #64 19M	UWA	8-36.90S	143-58.52E	g		VANC21MV
0624	030204	0	COBX	BOX #65 19M	UWA	8-36.90S	143-58.52E	g		VANC21MV
0820	030204	0	COBX	BOX #66 19M	UWA	8-36.90S	143-58.52E	g		VANC21MV
1016	030204	0	COBX	BOX #67 19M	UWA	8-36.90S	143-58.52E	g		VANC21MV
1215	030204	0	COBX	BOX #68 19M	UWA	8-36.90S	143-58.53E	g		VANC21MV
1415	030204	0	COBX	BOX #69 15M	UWA	8-36.90S	143-58.52E	g		VANC21MV
1615	030204	0	COBX	BOX #70 14M	UWA	8-36.90S	143-58.52E	g		VANC21MV
1821	030204	0	COBX	BOX #71 17M	UWA	8-36.90S	143-58.52E	g		VANC21MV
2016	030204	0	COBX	BOX #72 18M	UWA	8-36.90S	143-58.52E	g		VANC21MV
2040	030204	0	COBX	BOX #73 19M	UWA	8-36.90S	143-58.52E	g		VANC21MV
2222	030204	0	COBX	BOX #74 18M	UWA	8-36.90S	143-58.52E	g		VANC21MV
0022	040204	0	COBX	BOX #75 18M	UWA	8-36.90S	143-58.52E	g		VANC21MV
0225	040204	0	COBX	BOX #76 18M	UWA	8-36.90S	143-58.52E	g		VANC21MV
0418	040204	0	COBX	BOX #77 18M	UWA	8-36.90S	143-58.52E	g		VANC21MV
1226	040204	0	COBX	BOX #78 15M	UWA	8-04.54S	144-21.26E	g		VANC21MV
1418	040204	0	COBX	BOX #79 15M	UWA	8-04.54S	144-21.26E	g		VANC21MV
1616	040204	0	COBX	BOX #80 14M	UWA	8-04.54S	144-21.27E	g		VANC21MV
1825	040204	0	COBX	BOX #81 14M	UWA	8-04.54S	144-21.26E	g		VANC21MV
2013	040204	0	COBX	BOX #82 14M	UWA	8-04.54S	144-21.26E	g		VANC21MV
2220	040204	0	COBX	BOX #83 16M	UWA	8-04.54S	144-21.26E	g		VANC21MV
0022	050204	0	COBX	BOX #84 16M	UWA	8-04.54S	144-21.26E	g		VANC21MV
0951	050204	0	COBX	BOX #85 32M	UWA	8-51.50S	143-58.38E	g		VANC21MV
1225	050204	0	COBX	BOX #86 20M	UWA	8-49.60S	143-56.33E	g		VANC21MV

#GMT #TIME #-----	DDMMYY DATE -----	SAMP TZ ---	B CODE -	SAMPLE IDENTIFIER -----	DISP CODE -----	LATITUDE -----	LONGITUDE -----	p c -	CRUISE LEG-SHIP -----
1918	050204	0	COBX	BOX #87 16M	UWA	8-56.02S	143-48.23E	g	VANC21MV
2112	050204	0	COBX	BOX #88 17M	UWA	8-56.02S	143-48.23E	g	VANC21MV
2316	050204	0	COBX	BOX #89 18M	UWA	8-56.02S	143-48.23E	g	VANC21MV
0119	060204	0	COBX	BOX #90 18M	UWA	8-56.02S	143-48.23E	g	VANC21MV
0320	060204	0	COBX	BOX #91 18M	UWA	8-56.02S	143-48.23E	g	VANC21MV
0522	060204	0	COBX	BOX #92 16M	UWA	8-56.00S	143-48.24E	g	VANC21MV
0712	060204	0	COBX	BOX #93 16M	UWA	8-56.02S	143-48.23E	g	VANC21MV
1450	060204	0	COBX	BOX #94 14M	UWA	8-15.80S	144-13.45E	g	VANC21MV
1547	060204	0	COBX	BOX #95 16M	UWA	8-15.77S	144-13.47E	g	VANC21MV
1747	060204	0	COBX	BOX #96 15M	UWA	8-15.81S	144-13.44E	g	VANC21MV
1945	060204	0	COBX	BOX #97 15M	UWA	8-15.81S	144-13.44E	g	VANC21MV
2145	060204	0	COBX	BOX #98 15M	UWA	8-15.81S	144-13.44E	g	VANC21MV
2347	060204	0	COBX	BOX #99 17M	UWA	8-15.81S	144-13.44E	g	VANC21MV
0252	070204	0	COBX	BOX #100 16M	UWA	8-12.87S	144-19.06E	g	VANC21MV
0801	070204	0	COBX	BOX #101 16M	UWA	8-18.03S	144-15.51E	g	VANC21MV
0816	070204	0	COBX	BOX #102 20M	UWA	8-18.03S	144-15.51E	g	VANC21MV
0844	070204	0	COBX	BOX #103 20M	UWA	8-18.03S	144-15.51E	g	VANC21MV
0902	070204	0	COBX	BOX #104 20M	UWA	8-18.03S	144-15.51E	g	VANC21MV
1520	070204	0	COBX	BOX #105 58M	UWA	9-05.96S	143-56.16E	g	VANC21MV
1848	070204	0	COBX	BOX #106 72M	UWA	9-01.68S	143-53.79E	g	VANC21MV
0504	080204	0	COBX	BOX #107 23M	UWA	8-38.95S	143-59.09E	g	VANC21MV
1420	080204	0	COBX	BOX #108 18M	UWA	9-06.03S	143-36.46E	g	VANC21MV
0216	100204	0	COBX	BOX #109 67M	UWA	9-08.17S	143-56.22E	g	VANC21MV
0531	100204	0	COBX	BOX #110 42M	UWA	9-00.80S	143-52.89E	g	VANC21MV
0707	100204	0	COBX	BOX #111 45M	UWA	8-59.90S	143-53.45E	g	VANC21MV
1016	100204	0	COBX	BOX #112 72M	UWA	8-59.34S	143-52.92E	g	VANC21MV
2252	100204	0	COBX	BOX #113 20M	UWA	8-35.25S	144-10.73E	g	VANC21MV
2308	100204	0	COBX	BOX #114 20M	UWA	8-35.24S	144-10.73E	g	VANC21MV
2326	100204	0	COBX	BOX #115 20M	UWA	8-35.24S	144-10.73E	g	VANC21MV
0907	120204	0	COBX	BOX #116 16M	UWA	8-34.58S	143-57.80E	g	VANC21MV
0921	120204	0	COBX	BOX #117 16M	UWA	8-34.58S	143-57.80E	g	VANC21MV
0940	120204	0	COBX	BOX #118 16M	UWA	8-34.58S	143-57.80E	g	VANC21MV
1009	120204	0	COBX	BOX #119 15M	UWA	8-34.53S	143-57.82E	g	VANC21MV
1030	120204	0	COBX	BOX #120 15M	UWA	8-34.53S	143-57.82E	g	VANC21MV
1053	120204	0	COBX	BOX #121 15M	UWA	8-34.53S	143-57.82E	g	VANC21MV

**** Multi cores to U. of So. Carolina ****

0000	290104	0	COMC	MULTI #32 34M	SIX	8-10.85S	144-25.26E	g	VANC21MV
1157	290104	0	COMC	MULTI #33 10M	SIX	8-40.07S	144-08.83E	g	VANC21MV
1630	290104	0	COMC	MULTI #34 30M	SIX	8-36.40S	144-12.15E	g	VANC21MV
1804	290104	0	COMC	MULTI #35 39M	SIX	8-37.63S	144-13.43E	g	VANC21MV
1028	300104	0	COMC	MULTI #36 20M	SIX	8-45.94S	144-00.13E	g	VANC21MV
1243	300104	0	COMC	MULTI #37 30M	SIX	8-47.54S	144-01.53E	g	VANC21MV
1131	010204	0	COMC	MULTI #38 16M	SIX	8-33.68S	144-09.22E	g	VANC21MV
1500	010204	0	COMC	MULTI #39 60M	SIX	8-39.25S	144-15.11E	g	VANC21MV
1154	020204	0	COMC	MULTI #40 80M	SIX	8-50.33S	144-12.27E	g	VANC21MV
1359	020204	0	COMC	MULTI #41 68M	SIX	8-45.87S	144-08.29E	g	VANC21MV
1659	020204	0	COMC	MULTI #42 34M	SIX	8-42.95S	144-02.17E	g	VANC21MV
1027	050204	0	COMC	MULTI #43 31M	SIX	8-51.50S	143-58.38E	g	VANC21MV
1156	050204	0	COMC	MULTI #44 20M	SIX	8-49.60S	143-56.33E	g	VANC21MV
1601	070204	0	COMC	MULTI #45 59M	SIX	9-05.96S	143-56.16E	g	VANC21MV
1813	070204	0	COMC	MULTI #46 71M	SIX	9-01.68S	143-53.80E	g	VANC21MV
0533	080204	0	COMC	MULTI #47 22M	SIX	8-38.95S	143-59.09E	g	VANC21MV
1354	080204	0	COMC	MULTI #48 18M	SIX	9-06.03S	143-36.46E	g	VANC21MV
0251	100204	0	COMC	MULTI #49 66M	SIX	9-08.17S	143-56.22E	g	VANC21MV
0503	100204	0	COMC	MULTI #50 49M	SIX	9-00.80S	143-52.89E	g	VANC21MV
0740	100204	0	COMC	MULTI #51 45M	SIX	8-59.90S	143-53.45E	g	VANC21MV
0808	100204	0	COMC	MULTI #52 92M	SIX	9-00.10S	143-53.37E	g	VANC21MV
0949	100204	0	COMC	MULTI #53 74M	SIX	8-59.34S	143-52.92E	g	VANC21MV

#GMT	DDMMYY	SAMP	B	SAMPLE	DISP				p	CRUISE
#TIME	DATE	TZ	CODE	E IDENTIFIER	CODE	LATITUDE	LONGITUDE		c	LEG-SHIP
#-----	--	---	-	-----	-----	-----	-----	-----	-	-----
1907	290104	0	COPS	Piston#8 26M	UWA	8-37.63S	144-13.43E	g		VANC21MV
1314	300104	0	COPS	Piston#9 30M	UWA	8-47.54S	144-01.53E	g		VANC21MV
1746	010204	0	COPS	Piston#10 21M	UWA	8-26.86S	144-16.78E	g		VANC21MV
1730	020204	0	COPS	Piston#11 20M	UWA	8-42.95S	144-02.17E	g		VANC21MV
1447	050204	0	COPS	Piston#12 18M	UWA	8-51.50S	143-58.38E	g		VANC21MV
1139	120204	0	COPS	Piston#13 26M	UWA	8-34.53S	143-57.82E	g		VANC21MV
0514	130204	0	COPS	Piston#14 39M	UWA	8-22.55S	144-20.11E	g		VANC21MV
0749	130204	0	COPS	Piston#15 24M	UWA	8-41.85S	144-10.65E	g		VANC21MV

**** Towed Subbottom Depth Profiler ****

2101	260104	0	DPXX	B CHIRP #13	SIO	8-57.75S	144-05.72E	g		VANC21MV
0849	270104	0	DPXX	E CHIRP #13	SIO	8-37.55S	143-58.77E	g		VANC21MV
2321	270104	0	DPXX	B CHIRP #14	SIO	8-37.04S	143-58.78E	g		VANC21MV
0500	280104	0	DPXX	E CHIRP #14	SIO	8-33.01S	144-09.33E	g		VANC21MV
2336	280104	0	DPXX	B CHIRP #15	SIO	8-09.90S	144-24.03E	g		VANC21MV
0816	290104	0	DPXX	E CHIRP #15	SIO	8-41.40S	144-10.94E	g		VANC21MV
2105	290104	0	DPXX	B CHIRP #16	SIO	8-36.47S	144-12.19E	g		VANC21MV
0743	300104	0	DPXX	E CHIRP #16	SIO	8-45.30S	143-59.70E	g		VANC21MV
2031	310104	0	DPXX	B CHIRP #17	SIO	7-57.46S	145-10.77E	g		VANC21MV
2045	010204	0	DPXX	B CHIRP #18	SIO	8-22.17S	144-23.46E	g		VANC21MV
2246	010204	0	DPXX	E CHIRP #18	SIO	8-15.92S	144-16.46E	g		VANC21MV
1520	010204	0	DPXX	B CHIRP #19	SIO	8-39.26S	144-15.12E	g		VANC21MV
0829	020204	0	DPXX	E CHIRP #19	SIO	8-42.65S	144-23.20E	g		VANC21MV
2043	020204	0	DPXX	B CHIRP #20	SIO	8-46.02S	144-12.30E	g		VANC21MV
0312	070204	0	DPXX	B CHIRP #21	SIO	8-13.40S	144-20.31E	g		VANC21MV
0416	070204	0	DPXX	E CHIRP #21	SIO	8-16.36S	144-23.66E	g		VANC21MV

**** Current Meters ****

0640	070204	0	CMXX	Tripod B Recovered	SIX	8-18.07S	144-15.57E	g		VANC21MV
2243	080204	0	CMXX	Tripod A Recovered	SIX	8-35.14S	144-10.83E	g		VANC21MV
0840	110204	0	CMXX	Mooring Recovered	SIX	9-07.19S	144-25.73E	g		VANC21MV

**** Expendable Bathythermographs ****

2209	300104	0	BTXP	MK21 # 1 Fast_Deep	GDC	9-14.07S	145-37.38E	g		VANC21MV
1128	140204	0	BTXP	MK21 # 2 Fast_Deep	GDC	8-43.67S	145-52.07E	g		VANC21MV

#				End Sample Index						VANC21MV
---	--	--	--	------------------	--	--	--	--	--	----------