

*Report and Index of
Underway Marine Geophysical Data*

Centennial

Leg 01

(CNTL01RR)

R/V Roger Revelle

(Issued Jan 2003)

Ports:

San Diego, CA (21-Nov-02)

to

San Diego, CA (21-Nov-02)

Chief Scientist: Stephen Miller
Scripps Institution of Oceanography
spmiller@ucsd.edu

Computer Tech - Barry Quiel
Resident Tech - Geoff Ravenhill

Post-Cruise processing and report preparation by the
Shipboard Technical Support Group,
Scripps Institution of Oceanography
La Jolla, CA 92093-0223

Note: *This is an index of underway geophysical data edited and processed after the completion of the leg and is intended primarily for informal use within the institution. This document is not to be rereduced or distributed outside Scrips without prior approval of the chief scientist or Shipboard Technical Support, Scripps Institution of Oceanography, La Jolla, California 92093-0223*

STS Cruise ID#300

Report and Index of Navigation and Underway Geophysical Data

Contents:

Index Chart - give track of cruise leg, dates, ports.

Track Charts - annotated with dates and hour ticks.

Profiles - depth, magnetic and gravity free air anomaly vs. distance. (Sections of track with seismic reflection data have a wide black line along the bottom of the profile.)

Sample Index - list of begin/end times and positions of all underway records as well as samples and measurements from other disciplines collected on the leg.

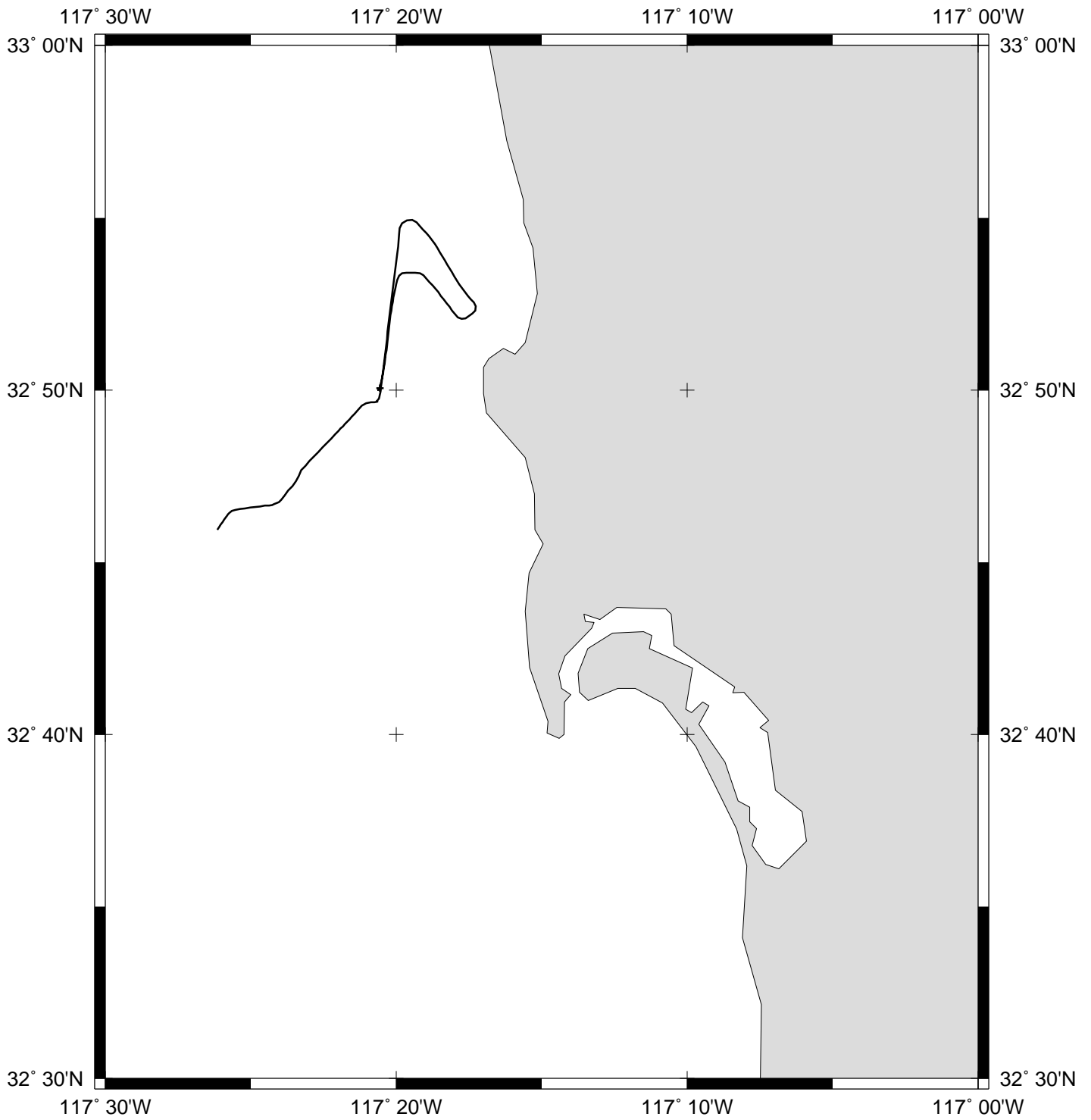
Note:

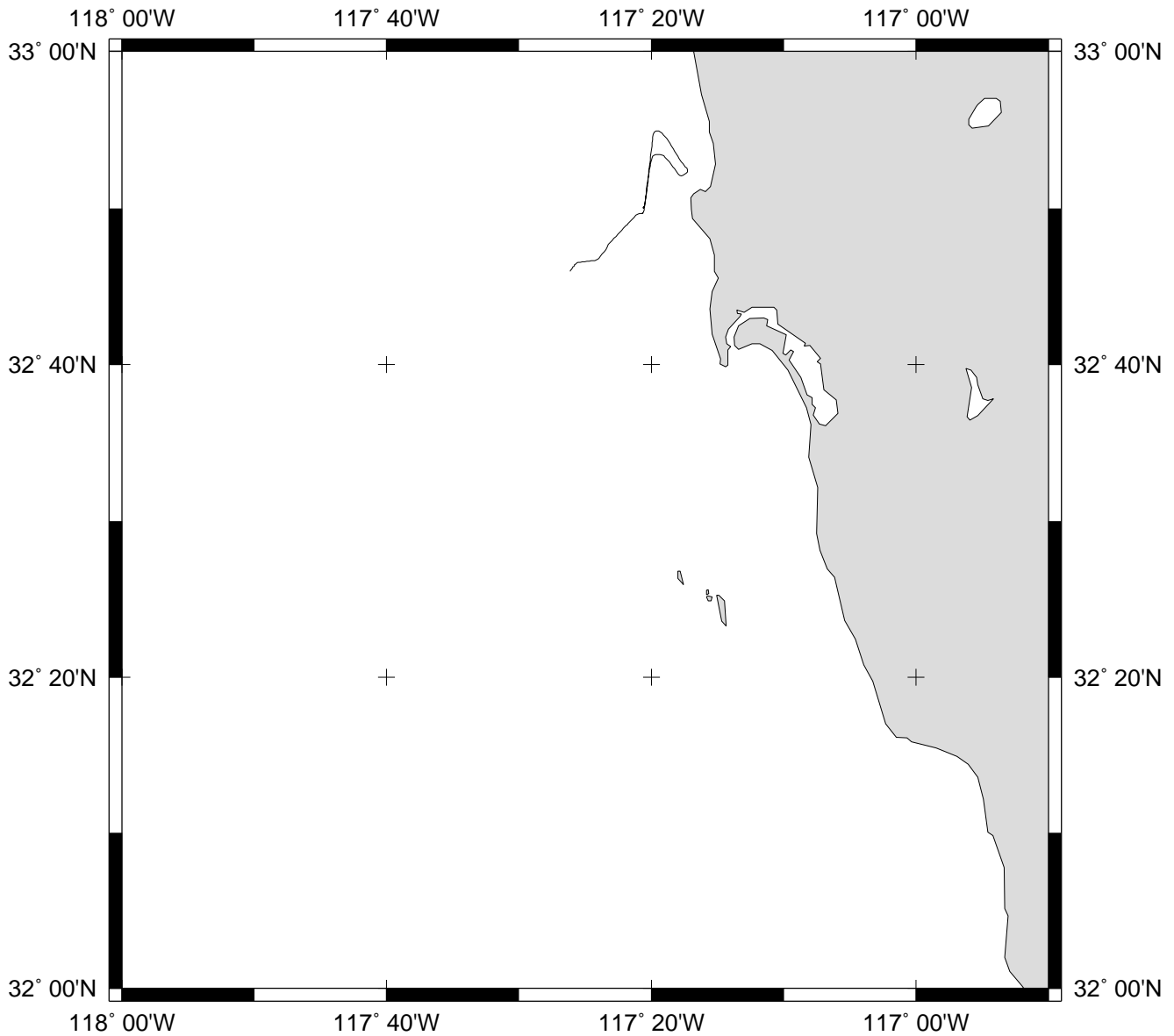
For information on the availability of this current digital data as well as archived digital data contact:

Stephen P. Miller
Geological Data Center
Scripps Institution of Oceanography
La Jolla, California 92093-0220
Phone: (858) 534-1898
Internet email: spmiller@ucsd.edu; or his website: <http://SIOExplorer@ucsd.edu>

Rev 05/2002

CNTL01RR





CENTENNIAL EXPEDITION LEG 1 (CNTL01RR)

=====

CHIEF SCIENTIST: Stephen P. Miller, Scripps Institution

PORTS: San Diego - San Diego, CA

DATES: 21 November 2002

SHIP: R/V Revelle

TOTAL MILEAGE OF UNDERWAY DATA COLLECTED

Cruise-21 miles

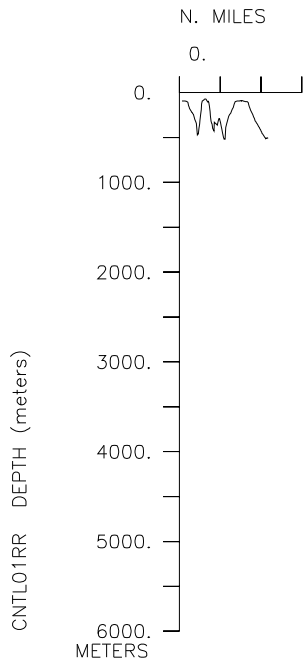
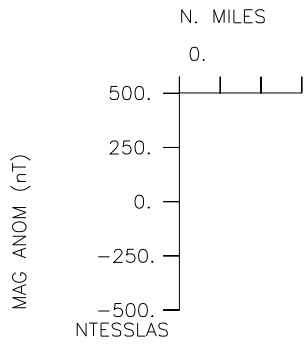
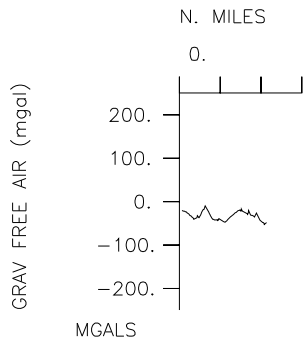
Magnetics-none collected

Bathymetry-21 miles

Seismic Reflection-none collected

Multibeam-21 miles

Gravity-21 miles



**** Ports ***

1959 211102 LGPT B San Diego, Calif. 32-43.00N 117-11.00W f CNTL01RR
 2355 211102 LGPT E San Diego, Calif. 32-43.00N 117-11.00W f CNTL01RR

**** Personnel ***

#	*****NAME*****	*****TITLE*****	*****AFFILIATION*****	**CRID**
PECS	UCSD Miller, S.P.	Chief Sceintist	Scripps Institution	CNTL01RR
PESP	UCSD Helly, J.	Scientist	Scripps Institution	CNTL01RR
PESP	UCSD Clark, D.	Scientist	Scripps Institution	CNTL01RR
PESP	UCSD Sandwell, D.	Scientist	Scripps Institution	CNTL01RR
PESP	UCSD Zaslavsky, I.	Scientist	Scripps Institution	CNTL01RR
PESP	UCSD Memon, A.	Scientist	Scripps Institution	CNTL01RR
PESP	UCSD Gipson, J.	Scientist	Scripps Institution	CNTL01RR
PESP	STS Sutherland, W.	Scientist	Scripps Institution	CNTL01RR
PESP	SIX Pitcairn, A.	Observer	Non-Scripps	CNTL01RR
PESP	SIX Aspaas, P.	Observer	Dartmouth	CNTL01RR
PESP	SIX Munzo, R.	Contractor	General Electric	CNTL01RR
PESP	SIX Fatheringham, D.	Contractor	Simrad	CNTL01RR
PESP	SIX Brown, E.	Contractor	Simrad	CNTL01RR
PESP	SIX Gelkie, B.	Contractor	Simrad	CNTL01RR
PESP	SIX Woodford, C.	Contractor	Glostten	CNTL01RR
PESP	SIX Larson, D.	Contractor	Glostten	CNTL01RR
PECT	STS Quiel, B.	Computer tech	Scripps Institution	CNTL01RR
PERT	STS Ravenhill, G.	Resident tech	Scripps Institution	CNTL01RR

**** NOTES ***

#An 'X' in the (B)egin/(E)nd column following the sample code indicates no
 #sample or data recovered. A 'C' indicates continuation of data collection
 #from before the beginning or after the end of a particular leg, (moored
 #bottom instruments, for example.) The number appearing in the columns
 #between the sample identifier and the disposition code, for many sample
 #entries, is the water depth in corrected meters.

#GMT	DDMMYY	SAMP	B	SAMPLE	DISP			p	CRUISE
#TIME	DATE	TZ	CODE	E IDENTIFIER	CODE	LATITUDE	LONGITUDE	c	LEG-SHIP

**** Underway Data Curator - Shipboard Technical Support Group ext.41899 ***
 **** Digital Data Curator - Geological Data Center, S.P. Miller, ext.41898 ***

**** MultiBeam Data ***

1959 211102 0 MBSI B SIMRAD EM120 data GDC 32-50.06N 117-20.56W g CNTL01RR
 2355 211102 0 MBSI E SIMRAD EM120 data GDC 32-45.95N 117-26.15W g CNTL01RR

**** Digital Gravity ***

1959 211102 0 GVDD B digital gravity data GDC 32-50.06N 117-20.56W g CNTL01RR
 2355 211102 0 GVDD E digital gravity data GDC 32-45.95N 117-26.15W g CNTL01RR

**** Expendable Bathythermographs ***

0005 221102 0 BTXP MK12 # 2 Fast_Deep GDC 32-45.23N 117-26.72W g CNTL01RR
 # End Sample Index CNTL01RR