

**Report and Index of
Underway Marine Geophysical Data**

Drift Expedition

Leg 3

(DRFT03RR)

R/V Revelle

(Issued December 2001)

Ports:

Puerto Caldera, Costa Rica (29 July 2001)

to

Puerto Caldera, Costa Rica (17 August 2001)

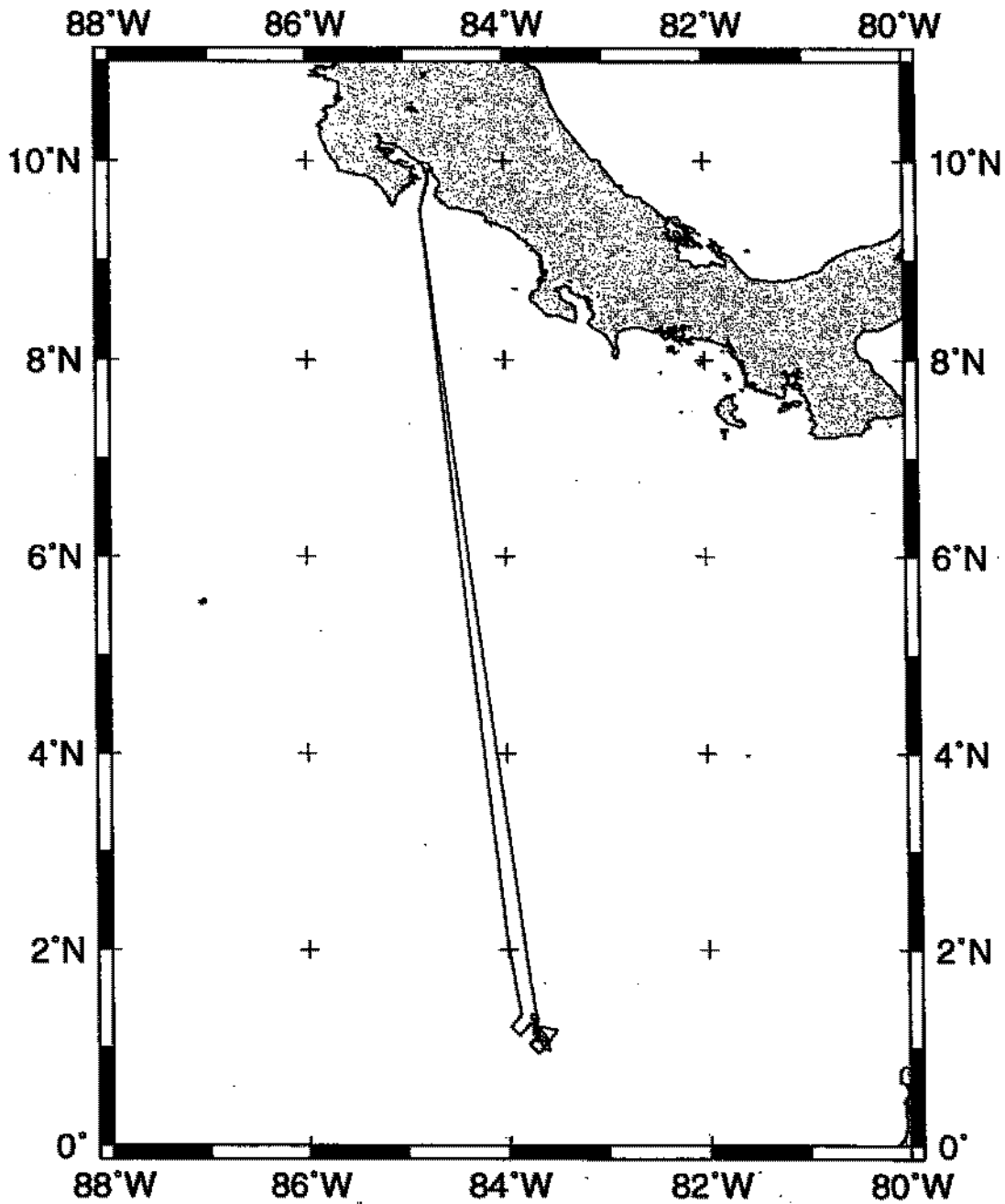
Chief Scientist: Kier Becker
RSMAS, University of Miami, FL
kbecker@rsmas.miami.edu

Computer Tech – Dan Jacobson
Resident Tech – Ron Comer

Post-Cruise processing and report preparation by the
Shipboard Technical Support Group,
Scripps Institution of Oceanography
La Jolla, CA 92093-0223

NOTE: This is an index of underway geophysical data edited and processed after the completion of the cruise leg and is intended primarily for informal use within the institution. This document is not to be reproduced or distributed outside Scripps without prior approval of the chief scientist or Shipboard Technical Support, Scripps Institution of Oceanography, La Jolla, California 92093-0223.

STS Cruise ID# 297



DRIFT EXPEDITION LEG 3 (DRFT03RR)

CHIEF SCIENTIST: Kier Becker, Univ. of Miami, Florida

PORTS: Puerto Caldera - Puerto Caldera, Costa Rica

DATES: 29 July - 17 August 2001

SHIP: R/V Revelle

TOTAL MILEAGE OF UNDERWAY DATA COLLECTED

Cruise-1373 miles

Magnetics-none collected

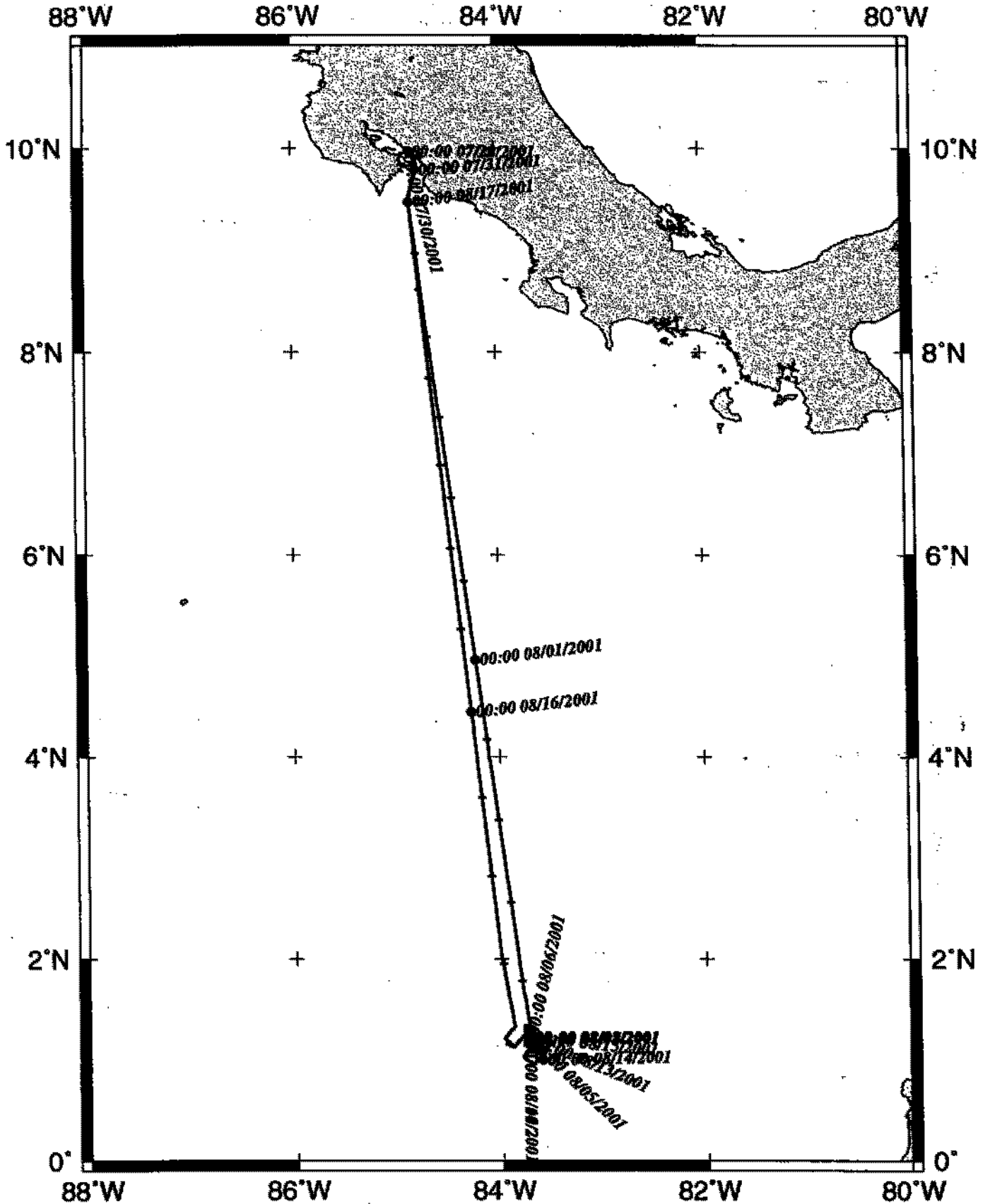
Bathymetry-863 miles

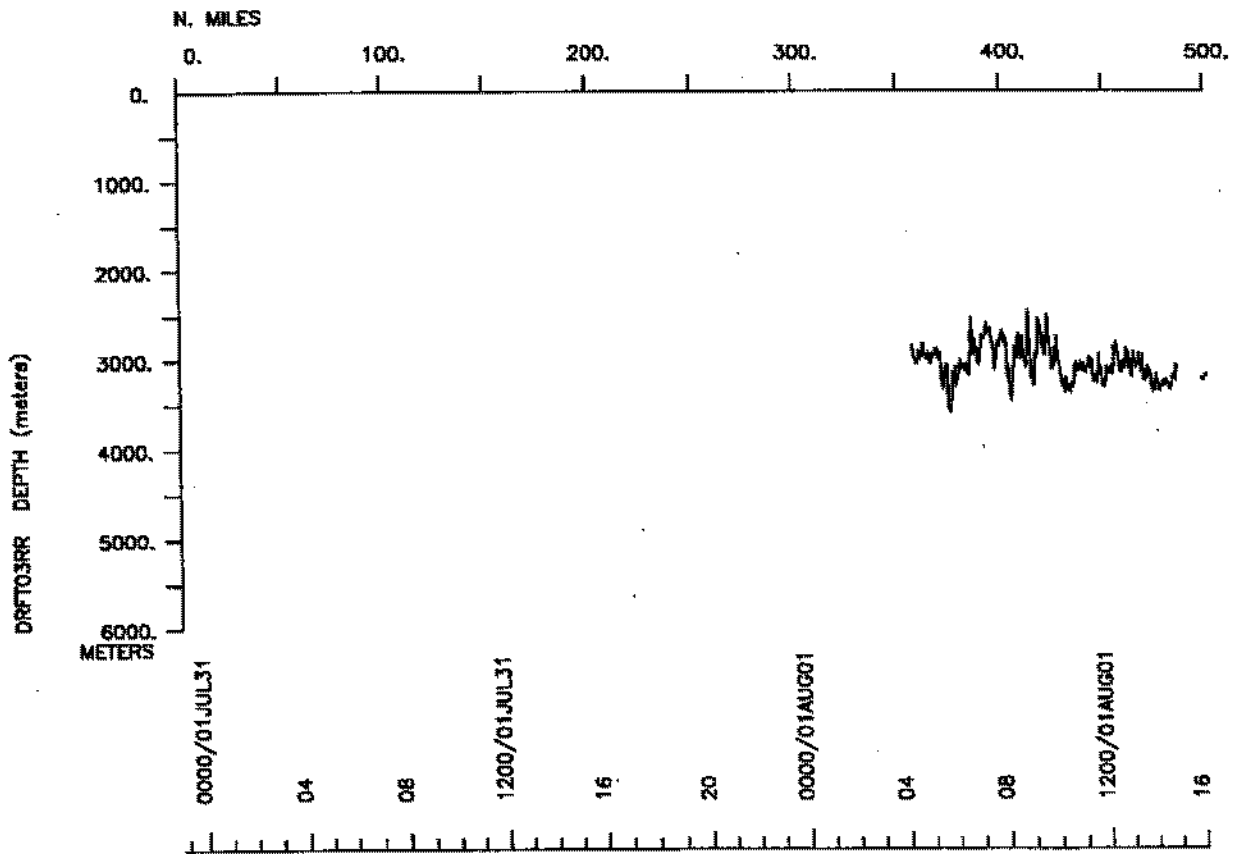
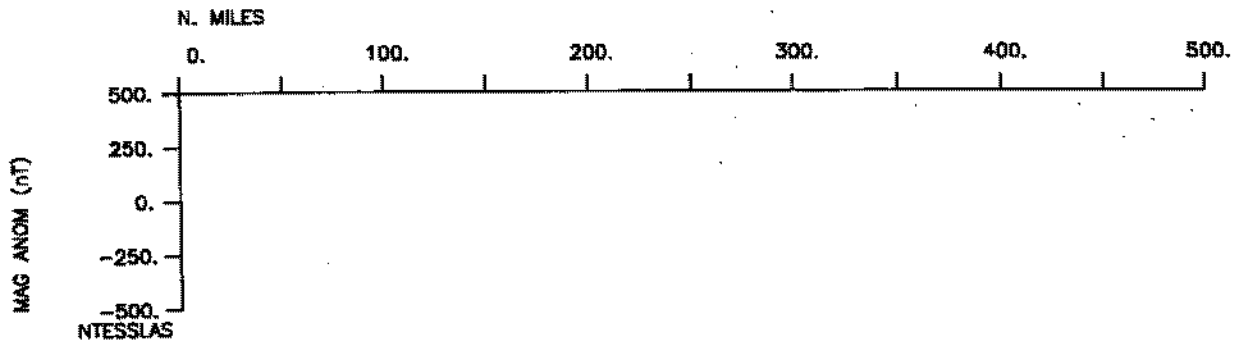
Seismic Reflection-none collected

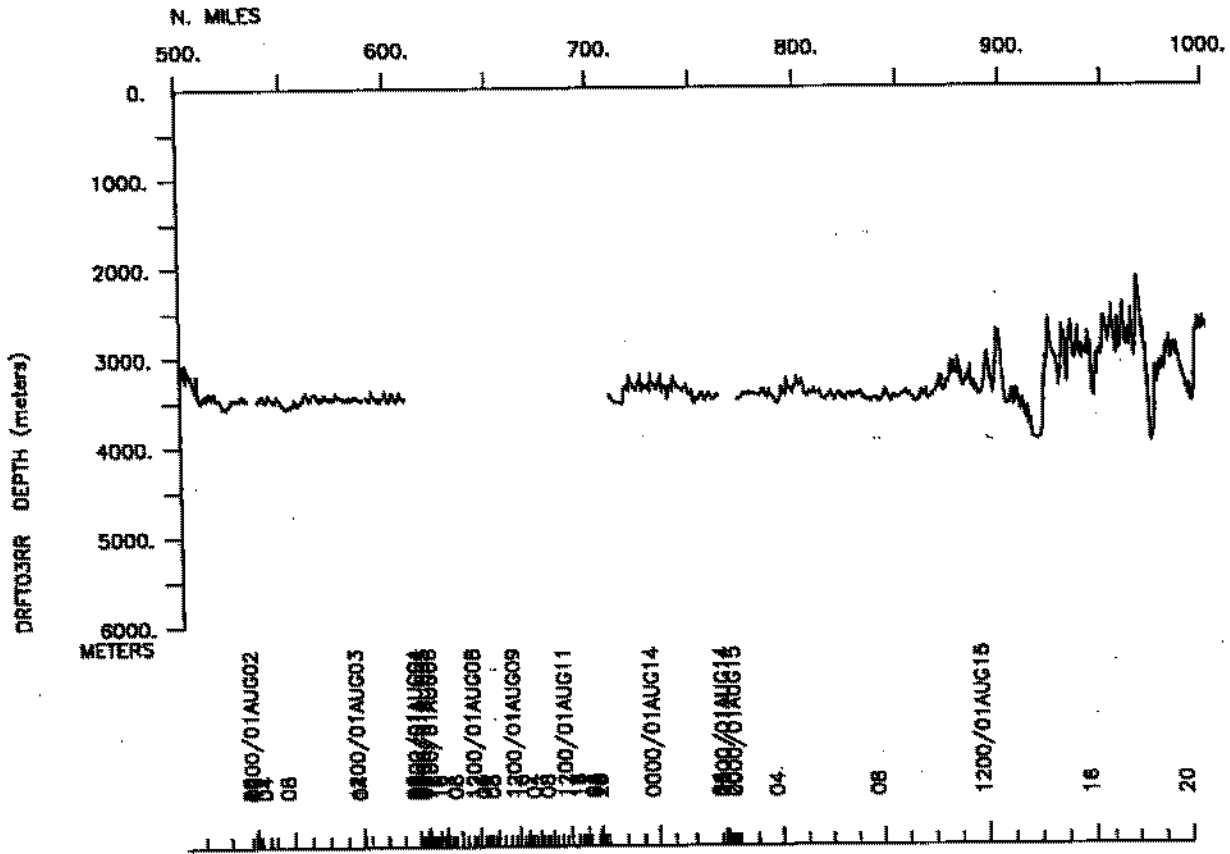
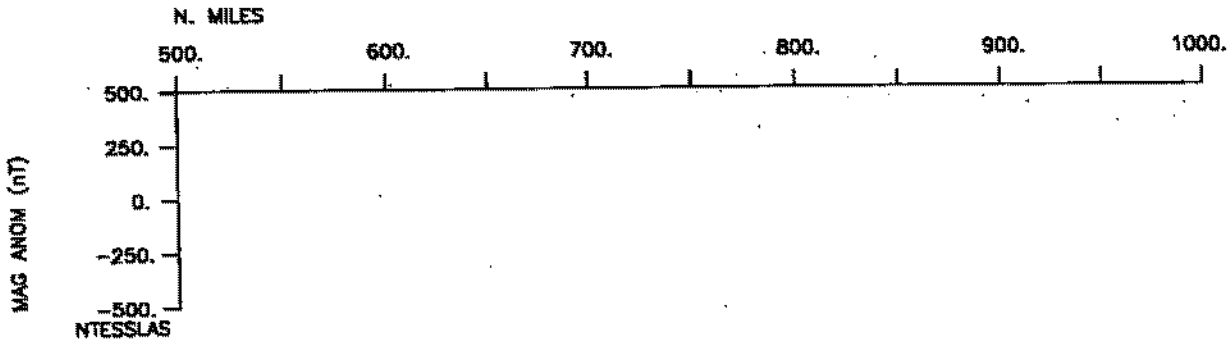
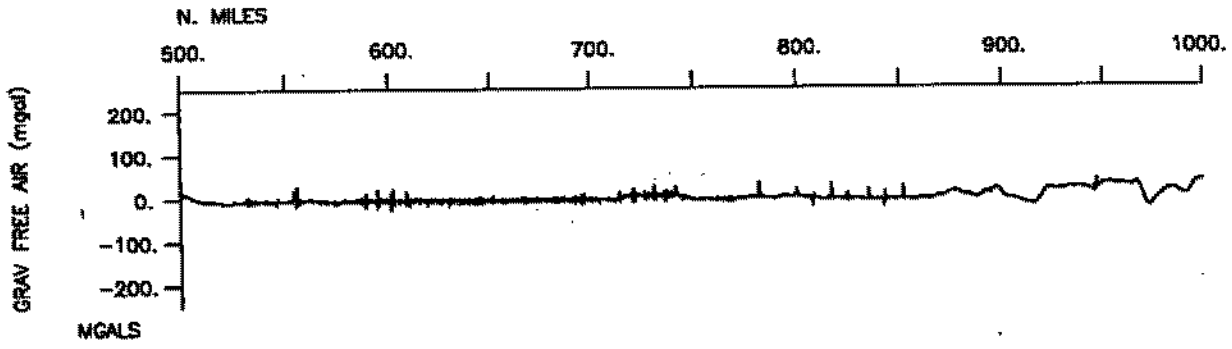
MultiBeam-863 miles

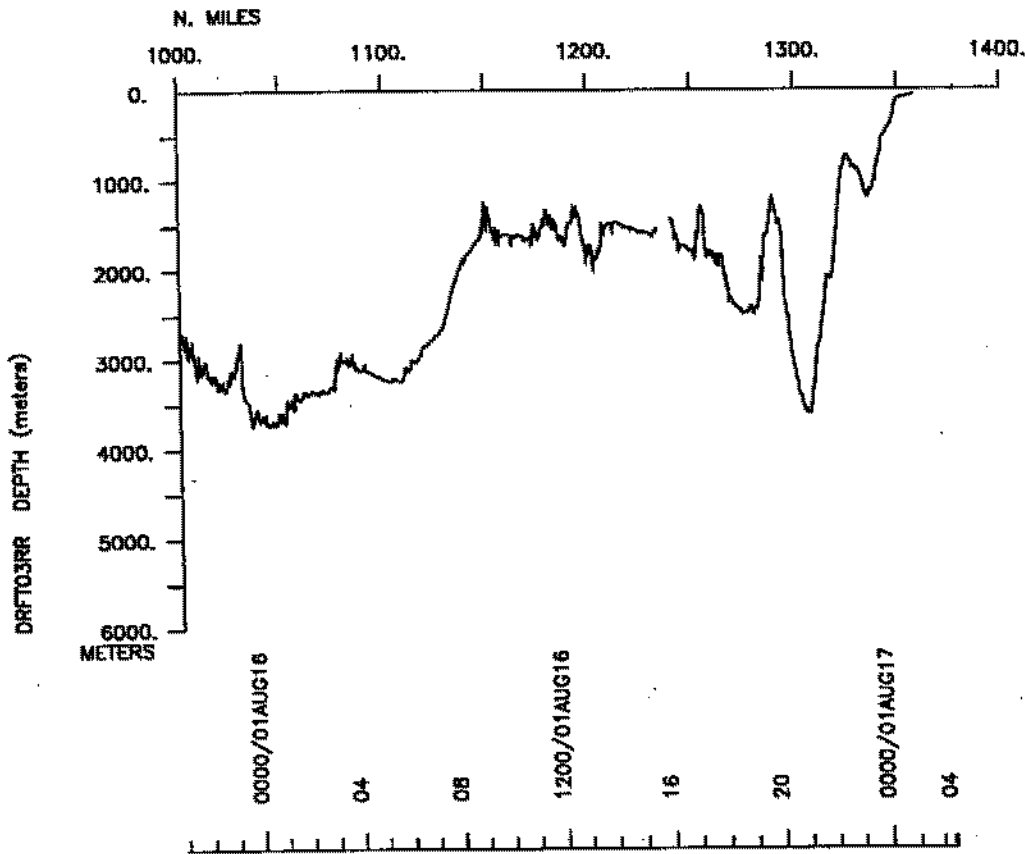
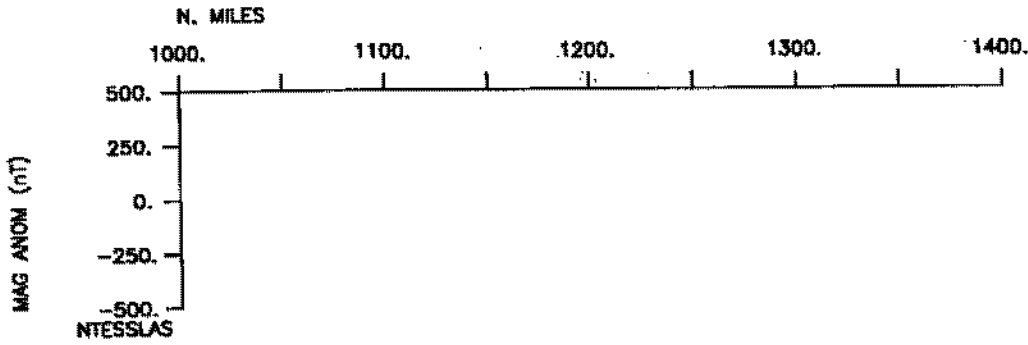
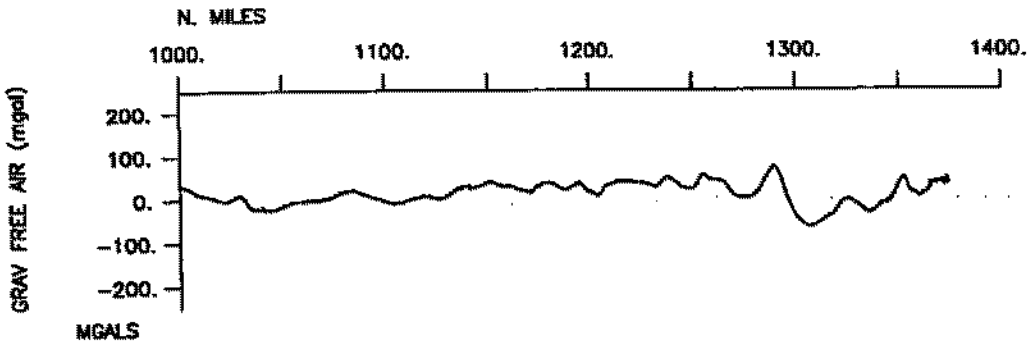
Gravity-1373 miles

DRIFT-RR leg 3 Track









S.I.O. Sample Index

Drift Expedition

Leg 3

(DRFT03RR)

R/V Revelle

(Issued December 2001)

PORTS:

Puerto Caldera, Costa Rica (29 July 2001)

to

Puerto Caldera, Costa Rica (17 August 2001)

**Chief Scientist: Kier Becker
RSMAS, University of Miami**

The Sample Index is a first level interdisciplinary listing of time, position, sample identification and disposition of all samples, records and measurements collected on this cruise leg. The index data are encoded at sea by the resident marine technician and processed on shore by the S.I.O. Shipboard Technical Support shortly after the completion of the cruise leg.

Positions are interpolated on the basis of sample time by comparison to a single, edited navigation file. Samples beginning at one time and position and ending at another are entered on two consecutive lines. Disposition and sample type are represented by three and four character codes to permit future computer searches on these parameters. (Listings defining these codes are available from the Shipboard Technical Support Group.)

STS Cruise ID# 297

*** Ports ***

2000	300701	LGPT B Pt.Caldera, Costa Rica	9-53.00N	84-45.00W	f	DRFT03RR
0255	170801	LGPT E Pt.Caldera, Costa Rica	9-53.00N	84-45.00W	f	DRFT03RR

*** Personnel ***

#	*****NAME*****	*****TITLE*****	*****AFFILIATION*****	**CRID**
PECS UMI	Becker, Dr.K.	Chief Scientist	RSMAS, U. of Miami	DRFT03RR
PESP MPL	Spiess, Dr.F.	Senior Scientist	Scripps Institution	DRFT03RR
PESP MPL	deMoustier, Dr.C.	Scientist	Scripps Institution	DRFT03RR
PESP SIX	Davis, R.	Scientist	Canada	DRFT03RR
PESP SIX	Meldrum, Dr.R.	Scientist	Canada	DRFT03RR
PERT STS	Comer, R.L.	Resident Tech.	Scripps Institution	DRFT03RR
PECT STS	Jacobsen, D.	Computer Tech.	Scripps Institution	DRFT03RR
PESP MPL	Austin, G.	Development Tech.	Scripps Institution	DRFT03RR
PESP MPL	Price, D.	Sr. Elect. Tech.	Scripps Institution	DRFT03RR
PESP MPL	Zimmerman, R.	Sr. Devel. Engr.	Scripps Institution	DRFT03RR
PESP MPL	Jabson, D.	Asst. Devel. Engr.	Scripps Institution	DRFT03RR
PESP MPL	Rimington, D.	Jr. Devel. Engr.	Scripps Institution	DRFT03RR

*** NOTES ***

#An 'X' in the (B)egin/(E)nd column following the sample code indicates no #sample or data recovered. A 'C' indicates continuation of data collection #from before the beginning or after the end of a particular leg, (moored #bottom instruments, for example.) The number appearing in the columns #between the sample identifier and the disposition code, for many sample #entries, is the water depth in corrected meters.

#GMT	DDMMYY	SAMP	B	SAMPLE	DISP		P	CRUISE
#TIME	DATE	TZ	CODE	E IDENTIFIER	CODE	LATITUDE	LONGITUDE	c LEG-SHIP

**** Underway Data Curator - Shipboard Technical Support Group ext.41899 ****
 **** Digital Data Curator - Geological Data Center, S.P. Miller, ext.41898 ****

**** Log Books ****

2000	300701	0	LBSC	B Scientific log	DTG	9-58.24N	84-49.84W	g DRFT03RR
0255	170801	0	LBSC	E Scientific log	DTG	9-55.14N	84-43.36W	g DRFT03RR

**** Drill Hole Sites ****

1948	040801	0	DHST	B Caliper Log, wells	DTG	1-13.01N	83-43.39W	g DRFT03RR
0655	050801	0	DHST	E 896A and 504B	DTG	1-13.58N	83-43.82W	g DRFT03RR
2038	060801	0	DHST	B Wire line cork of	UMI	1-12.99N	83-43.41W	g DRFT03RR
0224	080801	0	DHST	X well 896A	3448M UMI	1-13.00N	83-43.40W	g DRFT03RR
1630	110801	0	DHST	B Wire line cork of	UMI	1-13.59N	83-43.82W	g DRFT03RR
1558	120801	0	DHST	E well 504B	3463M UMI	1-13.59N	83-43.82W	g DRFT03RR

**** Heat FLOW in Drill Holes ****

0234	130801	0	HFDH	B Heat flow line 1	CAN	1-11.69N	83-45.55W	g DRFT03RR
2037	130801	0	HFDH	E 24 insertions	CAN	1-08.44N	83-45.81W	g DRFT03RR
0450	140801	0	HFDH	B Heat flow line 2	CAN	1-15.20N	83-45.25W	g DRFT03RR
0150	150801	0	HFDH	E 30 insertions	CAN	1-13.23N	83-43.92W	g DRFT03RR

**** MultiBeam Data (SIMRAD) ****

0415	010801	0	MBSI	B Multibeam data	GDC	4-07.35N	84-06.94W	g DRFT03RR
0108	170801	0	MBSI	E Multibeam data	GDC	9-42.59N	84-46.67W	g DRFT03RR

End Sample Index DRFT03RR